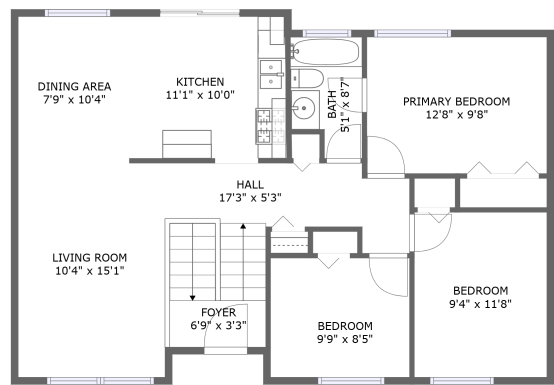
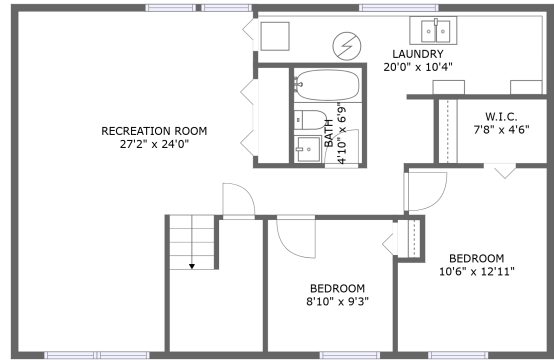


Home report

154 South Orchard Drive, Bolingbrook, Will County, Illinois,  
United States, 60440



FLOOR 2



FLOOR 1


Total Area: 1801 sq. ft

Floor 1: 895 sq. ft, Floor 2: 906 sq. ft

Excluded: Walls: 127 sq. ft

Property summary

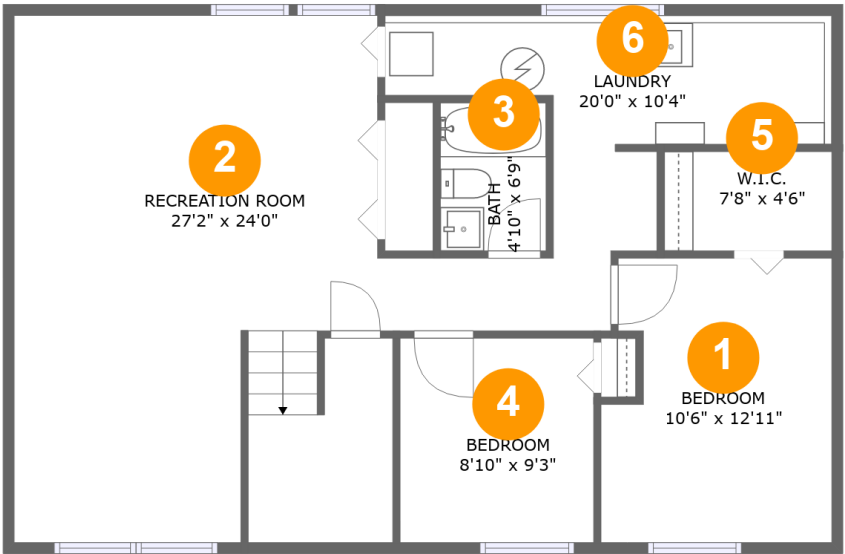
 2 Floors

 5 Bedrooms

 2 Bathrooms

Home report

154 South Orchard Drive, Bolingbrook, Will County, Illinois,  
United States, 60440



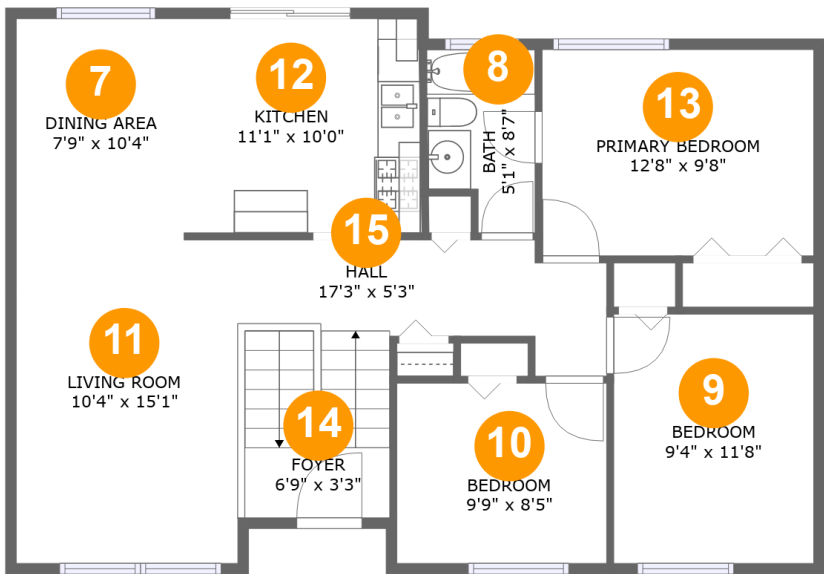
Room dimensions

Floor 1 Total:895sqft   Excluded: 0sqft

#		Max Dimensions	sqft	Included
1	Bedroom	10'6" x 12'11"	127 sq. ft	Yes
2	Recreation Room	27'2" x 24'0"	386 sq. ft	Yes
3	Bath	4'10" x 6'9"	33 sq. ft	Yes
4	Bedroom	8'10" x 9'3"	82 sq. ft	Yes
5	W.I.C.	7'8" x 4'6"	35 sq. ft	Yes
6	Laundry	20'0" x 10'4"	125 sq. ft	Yes

Home report

154 South Orchard Drive, Bolingbrook, Will County, Illinois,  
United States, 60440

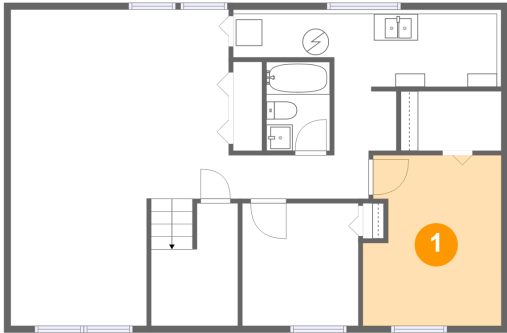


Room dimensions

Floor 2 Total:906sqft   Excluded: 0sqft

#		Max Dimensions	sqft	Included
7	Dining Area	7'9" x 10'4"	81 sq. ft	Yes
8	Bath	5'1" x 8'7"	38 sq. ft	Yes
9	Bedroom	9'4" x 11'8"	109 sq. ft	Yes
10	Bedroom	9'9" x 8'5"	82 sq. ft	Yes
11	Living Room	10'4" x 15'1"	156 sq. ft	Yes
12	Kitchen	11'1" x 10'0"	110 sq. ft	Yes
13	Primary Bedroom	12'8" x 9'8"	122 sq. ft	Yes
14	Foyer	6'9" x 3'3"	62 sq. ft	Yes
15	Hall	17'3" x 5'3"	79 sq. ft	Yes

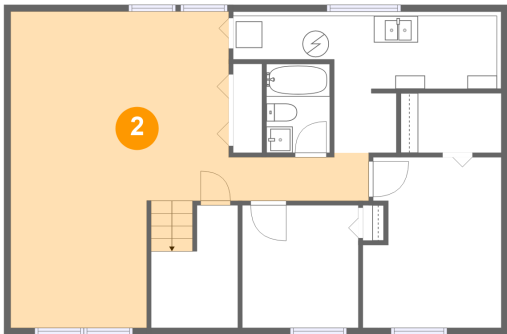
1 Floor 1 - Bedroom



Max Dimensions: 10'6" x 12'11"  
Calculated Area: 127 sq. ft  
Included: Yes

Heated: Yes  
Finished: Yes  
Enclosed: Yes  
Contiguous: Yes  
Permitted: Yes  
Wet space: No  
Addition: No  
Conversion: No

2 Floor 1 - Recreation Room



Max Dimensions: 27'2" x 24'0"  
Calculated Area: 386 sq. ft  
Included: Yes

Heated: Yes  
Finished: Yes  
Enclosed: Yes  
Contiguous: Yes  
Permitted: Yes  
Wet space: No  
Addition: No  
Conversion: No

## Home report

154 South Orchard Drive, Bolingbrook, Will County, Illinois,  
United States, 60440

### 3 Floor 1 - Bath



Max Dimensions: 4'10" x 6'9"  
Calculated Area: 33 sq. ft  
Included: No

Heated: Yes  
Finished: Yes  
Enclosed: Yes  
Contiguous: Yes  
Permitted: Yes  
Wet space: Yes  
Addition: No  
Conversion: No

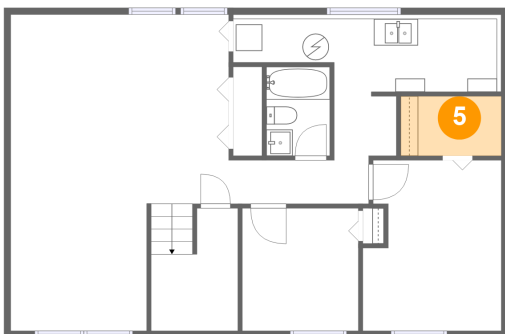
### 4 Floor 1 - Bedroom



Max Dimensions: 8'10" x 9'3"  
Calculated Area: 82 sq. ft  
Included: Yes

Heated: Yes  
Finished: Yes  
Enclosed: Yes  
Contiguous: Yes  
Permitted: Yes  
Wet space: No  
Addition: No  
Conversion: No

### 5 Floor 1 - W.I.C.



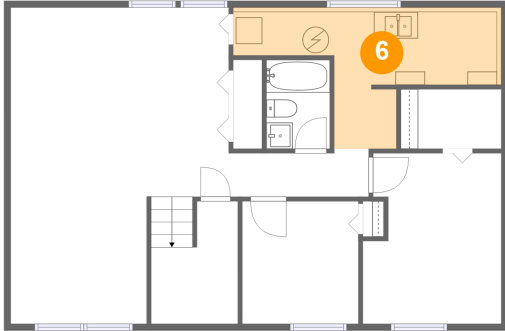
Max Dimensions: 7'8" x 4'6"  
Calculated Area: 35 sq. ft  
Included: Yes

Heated: Yes  
Finished: Yes  
Enclosed: Yes  
Contiguous: Yes  
Permitted: Yes  
Wet space: No  
Addition: No  
Conversion: No

## Home report

154 South Orchard Drive, Bolingbrook, Will County, Illinois,  
United States, 60440

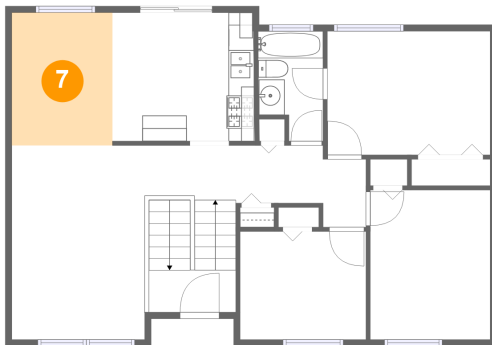
### 6 Floor 1 - Laundry



Max Dimensions: 20'0" x 10'4"  
Calculated Area: 125 sq. ft  
Included: Yes

Heated: Yes  
Finished: Yes  
Enclosed: Yes  
Contiguous: Yes  
Permitted: Yes  
Wet space: No  
Addition: No  
Conversion: No

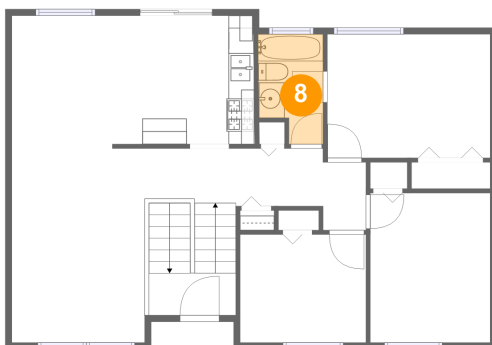
### 7 Floor 2 - Dining Area



Max Dimensions: 7'9" x 10'4"  
Calculated Area: 81 sq. ft  
Included: Yes

Heated: Yes  
Finished: Yes  
Enclosed: Yes  
Contiguous: Yes  
Permitted: Yes  
Wet space: No  
Addition: No  
Conversion: No

### 8 Floor 2 - Bath



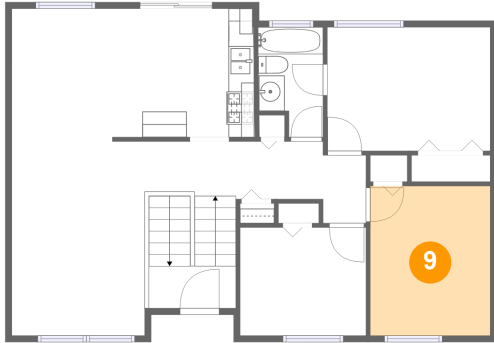
Max Dimensions: 5'1" x 8'7"  
Calculated Area: 38 sq. ft  
Included: Yes

Heated: Yes  
Finished: Yes  
Enclosed: Yes  
Contiguous: Yes  
Permitted: Yes  
Wet space: Yes  
Addition: No  
Conversion: No

## Home report

154 South Orchard Drive, Bolingbrook, Will County, Illinois,  
United States, 60440

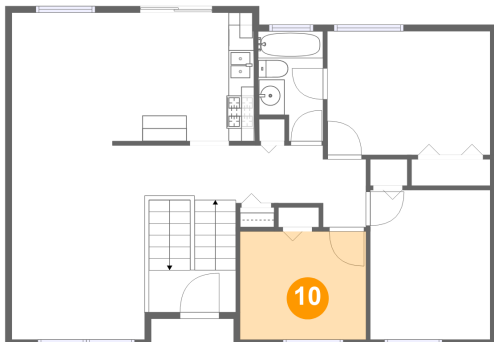
### 9 Floor 2 - Bedroom



Max Dimensions: 9'4" x 11'8"  
Calculated Area: 109 sq. ft  
Included: Yes

Heated: Yes  
Finished: Yes  
Enclosed: Yes  
Contiguous: Yes  
Permitted: Yes  
Wet space: No  
Addition: No  
Conversion: No

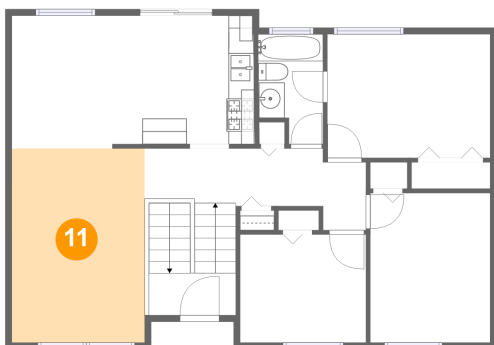
### 10 Floor 2 - Bedroom



Max Dimensions: 9'9" x 8'5"  
Calculated Area: 82 sq. ft  
Included: Yes

Heated: Yes  
Finished: Yes  
Enclosed: Yes  
Contiguous: Yes  
Permitted: Yes  
Wet space: No  
Addition: No  
Conversion: No

### 11 Floor 2 - Living Room

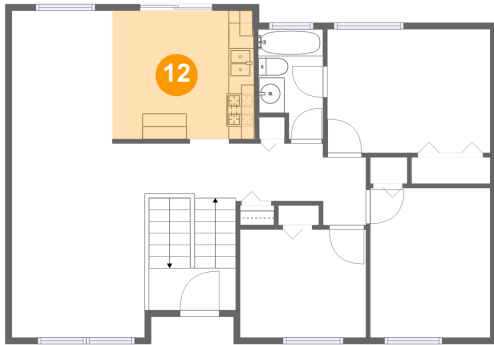


Max Dimensions: 10'4" x 15'1"  
Calculated Area: 156 sq. ft  
Included: Yes

Heated: Yes  
Finished: Yes  
Enclosed: Yes  
Contiguous: Yes  
Permitted: Yes  
Wet space: No  
Addition: No  
Conversion: No

154 South Orchard Drive, Bolingbrook, Will County, Illinois,  
United States, 60440

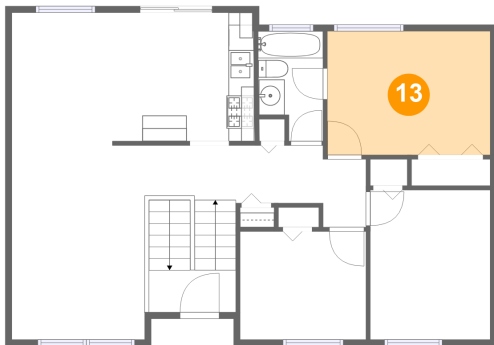
## 12 Floor 2 - Kitchen



Max Dimensions: 11'1" x 10'0"  
Calculated Area: 110 sq. ft  
Included: Yes

Heated: Yes  
Finished: Yes  
Enclosed: Yes  
Contiguous: Yes  
Permitted: Yes  
Wet space: No  
Addition: No  
Conversion: No

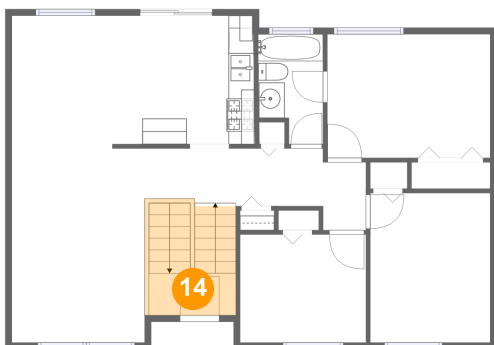
## 13 Floor 2 - Primary Bedroom



Max Dimensions: 12'8" x 9'8"  
Calculated Area: 122 sq. ft  
Included: Yes

Heated: Yes  
Finished: Yes  
Enclosed: Yes  
Contiguous: Yes  
Permitted: Yes  
Wet space: No  
Addition: No  
Conversion: No

## 14 Floor 2 - Foyer



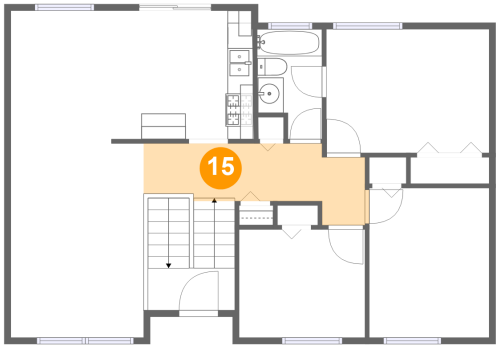
Max Dimensions: 6'9" x 3'3"  
Calculated Area: 62 sq. ft  
Included: Yes

Heated: Yes  
Finished: Yes  
Enclosed: Yes  
Contiguous: Yes  
Permitted: Yes  
Wet space: No  
Addition: No  
Conversion: No



154 South Orchard Drive, Bolingbrook, Will County, Illinois,  
United States, 60440

**15** Floor 2 - Hall



Max Dimensions: 17'3" x 5'3"  
Calculated Area: 79 sq. ft  
Included: Yes

Heated: Yes  
Finished: Yes  
Enclosed: Yes  
Contiguous: Yes  
Permitted: Yes  
Wet space: No  
Addition: No  
Conversion: No