



# 1024 E Lisburn Rd



4 Bed



3 Bath

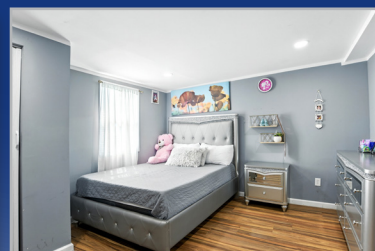


2,115 Sq Ft



1 Acres

Mechanicsburg, PA 17055



Offered by:

**Ro Karki**

**Office:** (717) 761-4800

**Cell:** (717) 919-8880

**Email:** roshan.karki@cbrealty.com

**Web:** www.RoshanKarki.CBinTouch.com



**COLDWELL BANKER**

3915 Market St  
Camp Hill, PA 17011

The information contained herein has been obtained through sources deemed reliable by the Realtor, but cannot be guaranteed for its accuracy. We recommend to the buyer that any information, which is of special interest, should be obtained through independent verification. ALL MEASUREMENTS ARE APPROXIMATE. Photography & Flyer produced by: Real Estate Exposures - realestateexposures.com - (717) 747-3235

