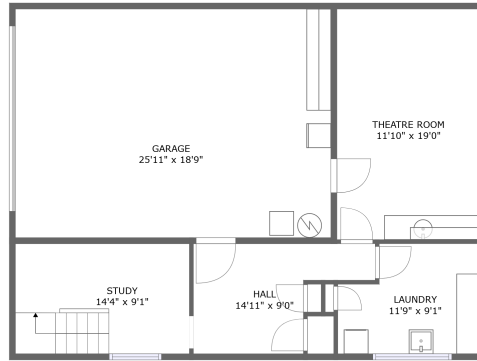
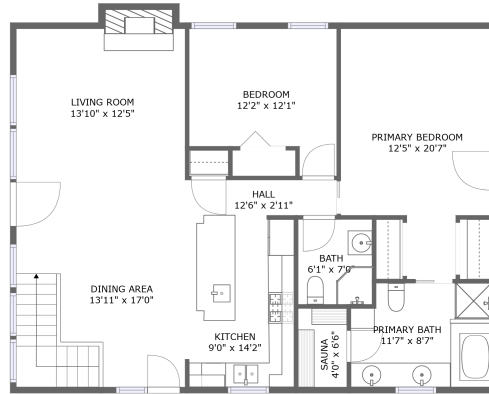


880 Southwest 61st Drive, Sylvan-Highlands, Portland, Multnomah County, Oregon, United



Property Summary


 **1** garages

 **2** bedrooms

 **2** bathrooms

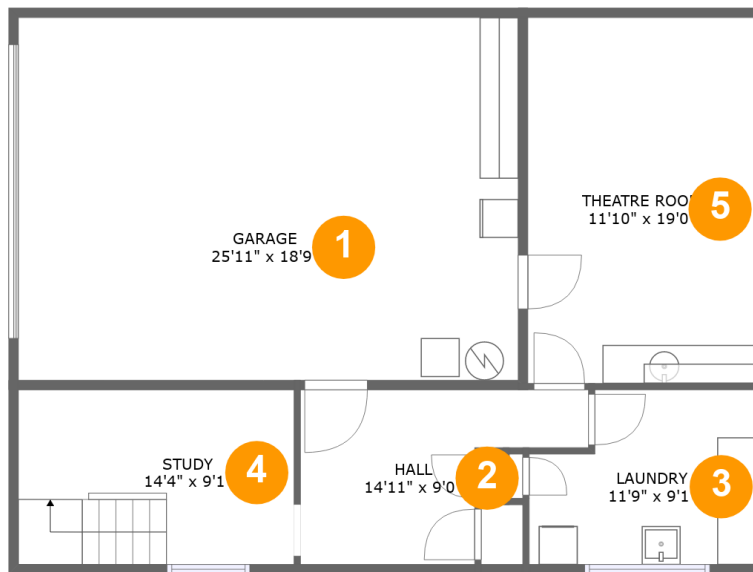
 **0** half baths

 **2** floors

 **1,864** Gross Living Area sqft

 **2,386** total sqft

880 Southwest 61st Drive, Sylvan-Highlands, Portland, Multnomah County, Oregon, United



Room Dimensions

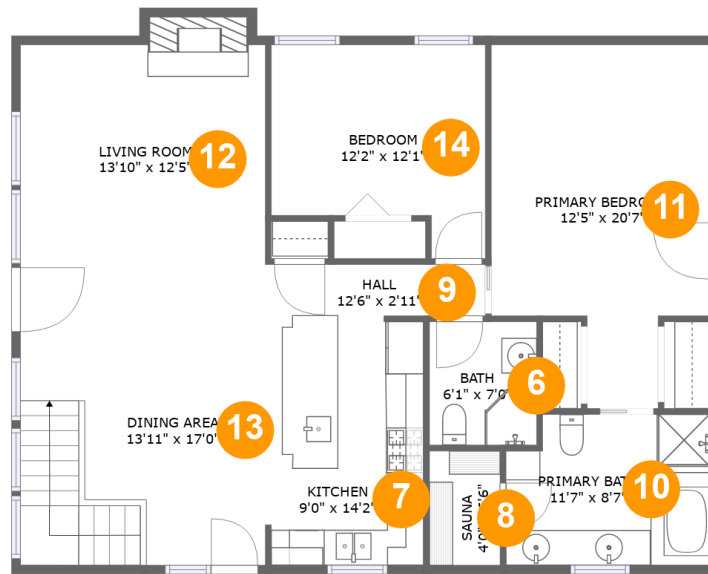
Floor 1

Total sqft: 1154

Living area: 643

#	Room name	Dimensions	Area (sqft)	Counted as Living Area
1	Garage	25'11" x 18'9"	488 sq. ft	No
2	Hall	14'11" x 9'0"	100 sq. ft	Yes
3	Laundry	11'9" x 9'1"	95 sq. ft	Yes
4	Study	14'4" x 9'1"	130 sq. ft	Yes
5	Theatre Room	11'10" x 19'0"	224 sq. ft	Yes

880 Southwest 61st Drive, Sylvan-Highlands, Portland, Multnomah County, Oregon, United



Room Dimensions

Floor 2

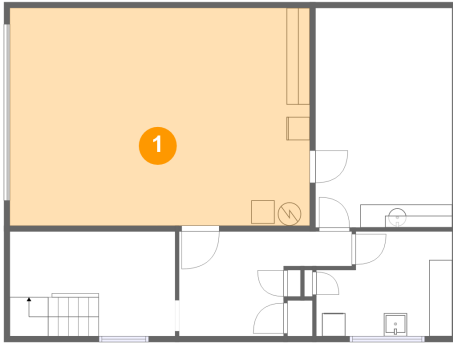
Total sqft: 1232

Living area: 1221

#	Room name	Dimensions	Area (sqft)	Counted as Living Area
6	Bath	6'1" x 7'0"	42 sq. ft	Yes
7	Kitchen	9'0" x 14'2"	125 sq. ft	Yes
8	Sauna	4'0" x 6'6"	26 sq. ft	Yes
9	Hall	12'6" x 2'11"	36 sq. ft	Yes
10	Primary Bath	11'7" x 8'7"	94 sq. ft	Yes
11	Primary Bedroom	12'5" x 20'7"	211 sq. ft	Yes
12	Living Room	13'10" x 12'5"	182 sq. ft	Yes
13	Dining Area	13'11" x 17'0"	237 sq. ft	Yes
14	Bedroom	12'2" x 12'1"	125 sq. ft	Yes

880 Southwest 61st Drive, Sylvan-Highlands, Portland, Multnomah County, Oregon, United

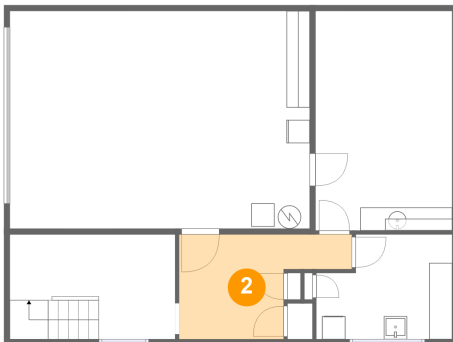
1 Floor 1 - Garage



Dimensions: 25'11" x 18'9"
Area: 488 sq. ft
Counted as Living Area: No

Heated: No
Finished: No
Enclosed: Yes
Contiguous: Yes
Permitted: Yes
Wet Space: No
Addition: No
Conversion: No

2 Floor 1 - Hall

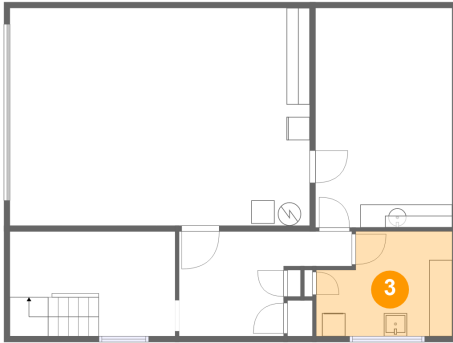


Dimensions: 14'11" x 9'0"
Area: 100 sq. ft
Counted as Living Area:
Yes

Heated: Yes
Finished: Yes
Enclosed: Yes
Contiguous:
Yes
Permitted: Yes
Wet Space: No
Addition: No
Conversion: No

880 Southwest 61st Drive, Sylvan-Highlands, Portland, Multnomah County, Oregon, United

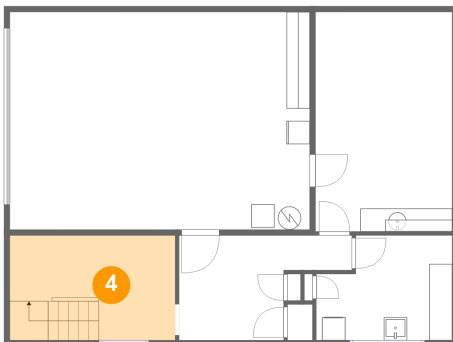
3 Floor 1 - Laundry



Dimensions: 11'9" x 9'1"
Area: 95 sq. ft
Counted as Living Area:
Yes

Heated: Yes
Finished: Yes
Enclosed: Yes
Contiguous:
Yes
Permitted: Yes
Wet Space: No
Addition: No
Conversion: No

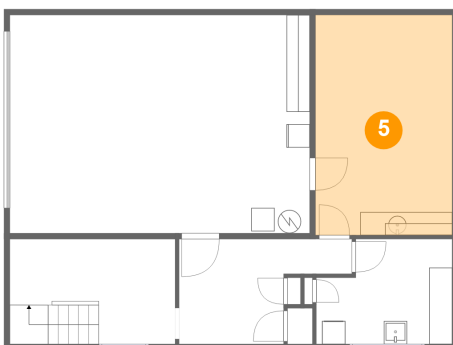
4 Floor 1 - Study



Dimensions: 14'4" x 9'1"
Area: 130 sq. ft
Counted as Living Area:
Yes

Heated: Yes
Finished: Yes
Enclosed: Yes
Contiguous:
Yes
Permitted: Yes
Wet Space: No
Addition: No
Conversion: No

5 Floor 1 - Theatre Room

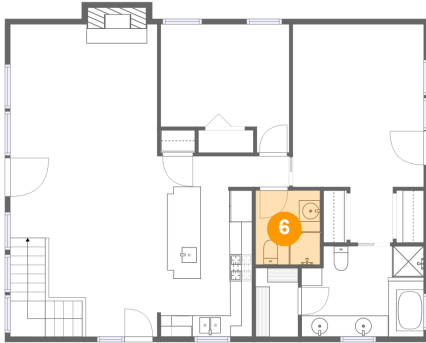


Dimensions: 11'10" x 19'0"
Area: 224 sq. ft
Counted as Living Area:
Yes

Heated: Yes
Finished: Yes
Enclosed: Yes
Contiguous:
Yes
Permitted: Yes
Wet Space: No
Addition: No
Conversion: No

880 Southwest 61st Drive, Sylvan-Highlands, Portland, Multnomah County, Oregon, United

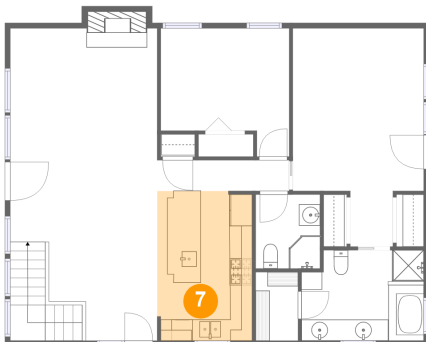
6 Floor 2 - Bath



Dimensions: 6'1" x 7'0"
Area: 42 sq. ft
Counted as Living Area:
Yes

Heated: Yes
Finished: Yes
Enclosed: Yes
Contiguous:
Yes
Permitted: Yes
Wet Space: Yes
Addition: No
Conversion: No

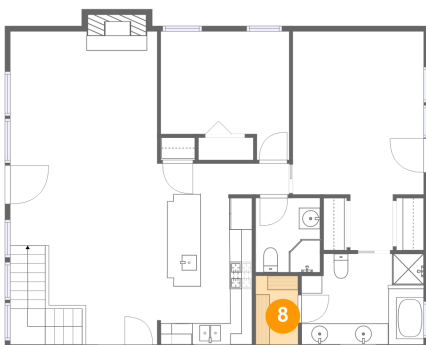
7 Floor 2 - Kitchen



Dimensions: 9'0" x 14'2"
Area: 125 sq. ft
Counted as Living Area:
Yes

Heated: Yes
Finished: Yes
Enclosed: Yes
Contiguous:
Yes
Permitted: Yes
Wet Space: No
Addition: No
Conversion: No

8 Floor 2 - Sauna

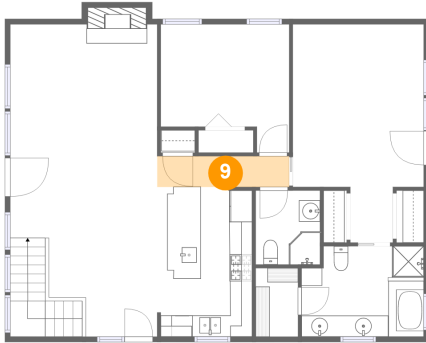


Dimensions: 4'0" x 6'6"
Area: 26 sq. ft
Counted as Living Area:
Yes

Heated: Yes
Finished: Yes
Enclosed: Yes
Contiguous:
Yes
Permitted: Yes
Wet Space: No
Addition: No
Conversion: No

880 Southwest 61st Drive, Sylvan-Highlands, Portland, Multnomah County, Oregon, United

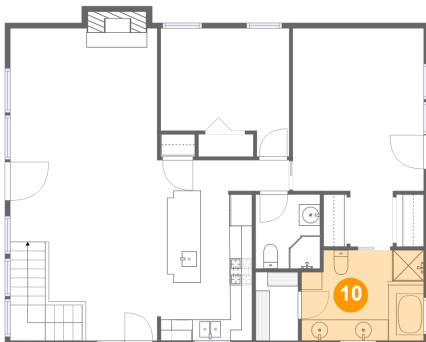
9 Floor 2 - Hall



Dimensions: 12'6" x 2'11"
Area: 36 sq. ft
Counted as Living Area:
Yes

Heated: Yes
Finished: Yes
Enclosed: Yes
Contiguous:
Yes
Permitted: Yes
Wet Space: No
Addition: No
Conversion: No

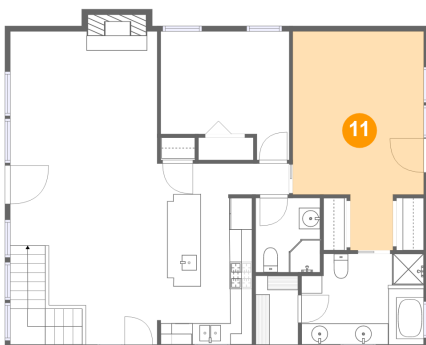
10 Floor 2 - Primary Bath



Dimensions: 11'7" x 8'7"
Area: 94 sq. ft
Counted as Living Area:
Yes

Heated: Yes
Finished: Yes
Enclosed: Yes
Contiguous:
Yes
Permitted: Yes
Wet Space: Yes
Addition: No
Conversion: No

11 Floor 2 - Primary Bedroom

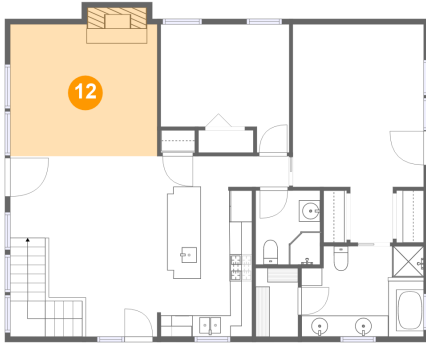


Dimensions: 12'5" x 20'7"
Area: 211 sq. ft
Counted as Living Area:
Yes

Heated: Yes
Finished: Yes
Enclosed: Yes
Contiguous:
Yes
Permitted: Yes
Wet Space: No
Addition: No
Conversion: No

880 Southwest 61st Drive, Sylvan-Highlands, Portland, Multnomah County, Oregon, United

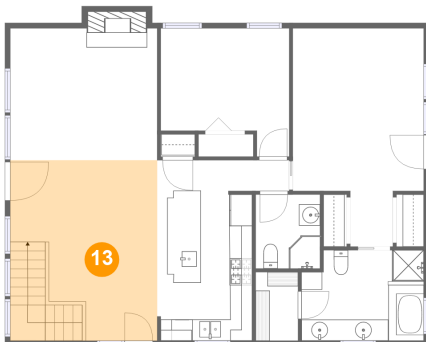
12 Floor 2 - Living Room



Dimensions: 13'10" x 12'5"
Area: 182 sq. ft
Counted as Living Area:
Yes

Heated: Yes
Finished: Yes
Enclosed: Yes
Contiguous:
Yes
Permitted: Yes
Wet Space: No
Addition: No
Conversion: No

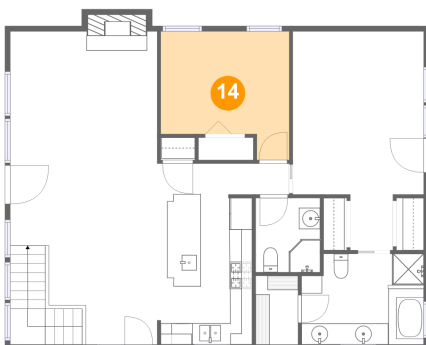
13 Floor 2 - Dining Area



Dimensions: 13'11" x 17'0"
Area: 237 sq. ft
Counted as Living Area:
Yes

Heated: Yes
Finished: Yes
Enclosed: Yes
Contiguous:
Yes
Permitted: Yes
Wet Space: No
Addition: No
Conversion: No

14 Floor 2 - Bedroom



Dimensions: 12'2" x 12'1"
Area: 125 sq. ft
Counted as Living Area:
Yes

Heated: Yes
Finished: Yes
Enclosed: Yes
Contiguous:
Yes
Permitted: Yes
Wet Space: No
Addition: No
Conversion: No