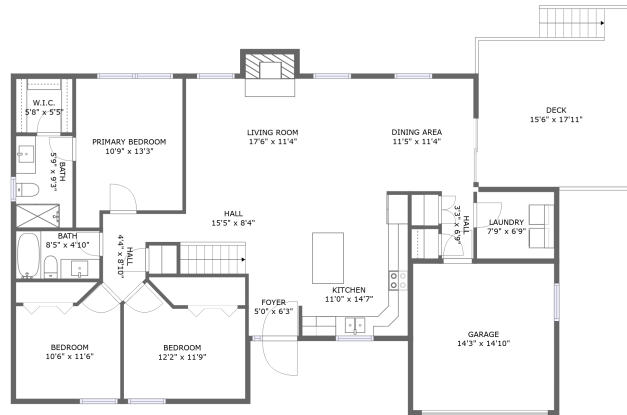
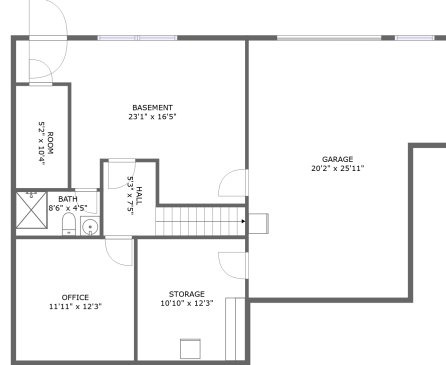


304 East High Street, Baldwin City, Kansas 66006, United States



FLOOR 2




FLOOR 1

Property Summary

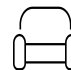
 2 floors

 3 bedrooms

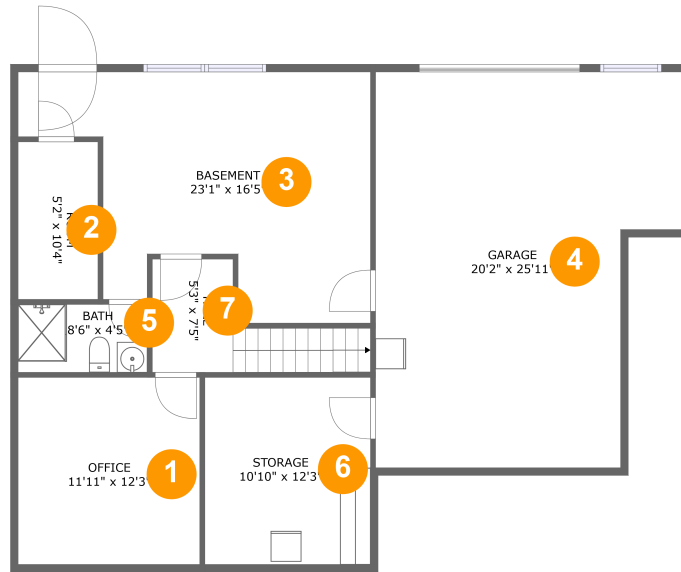
 3 bathrooms

 3,209 total sqft

 2 garages

 1,434 Gross Living Area sqft

304 East High Street, Baldwin City, Kansas 66006, United States



Room Dimensions

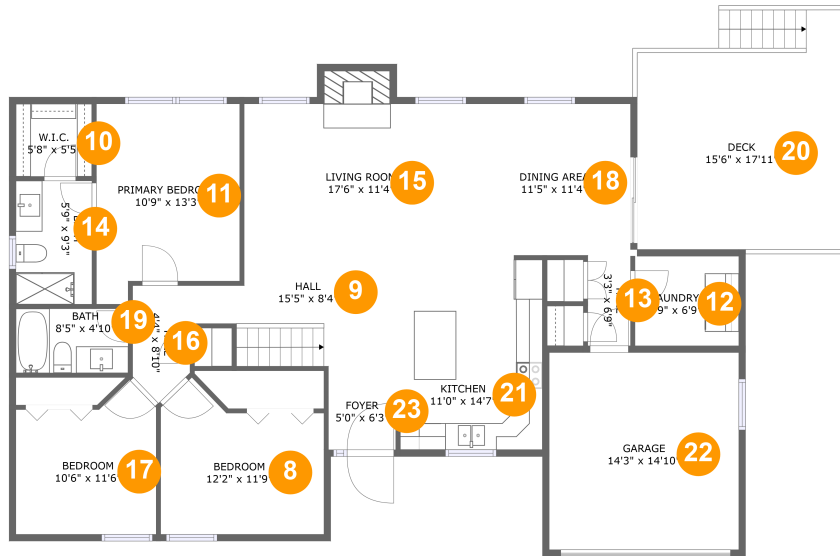
Floor 1

Total sqft: 1292

Living area: 0

#	Room name	Dimensions	Area (sqft)	Counted as Living Area
1	Office	11'11" x 12'3"	146 sq. ft	No
2	Room	5'2" x 10'4"	54 sq. ft	No
3	Basement	23'1" x 16'5"	281 sq. ft	No
4	Garage	20'2" x 25'11"	460 sq. ft	No
5	Bath	8'6" x 4'5"	38 sq. ft	No
6	Storage	10'10" x 12'3"	133 sq. ft	No
7	Hall	5'3" x 7'5"	65 sq. ft	No

304 East High Street, Baldwin City, Kansas 66006, United States



Room Dimensions

Floor 2

Total sqft: 1917

Living area: 1434

#	Room name	Dimensions	Area (sqft)	Counted as Living Area
8	Bedroom	12'2" x 11'9"	119 sq. ft	Yes
9	Hall	15'5" x 8'4"	108 sq. ft	Yes
10	W.i.c.	5'8" x 5'5"	31 sq. ft	Yes
11	Primary Bedroom	10'9" x 13'3"	147 sq. ft	Yes
12	Laundry	7'9" x 6'9"	52 sq. ft	Yes
13	Hall	3'3" x 6'9"	22 sq. ft	Yes
14	Bath	5'9" x 9'3"	53 sq. ft	Yes
15	Living Room	17'6" x 11'4"	212 sq. ft	Yes
16	Hall	4'4" x 8'10"	33 sq. ft	Yes
17	Bedroom	10'6" x 11'6"	104 sq. ft	Yes
18	Dining Area	11'5" x 11'4"	130 sq. ft	Yes

Scan captured on Thu, 09 May 2024 16:30:57 GMT

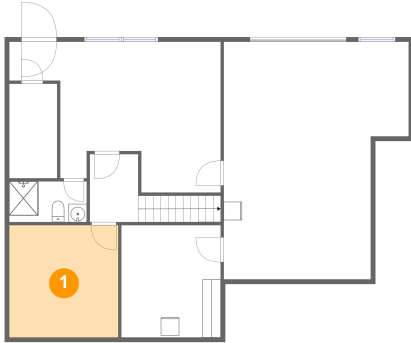
Information is calculated by CubiCasa technology; deemed highly reliable but not guaranteed.

**304 East High Street, Baldwin City, Kansas
66006, United States**

#	Room name	Dimensions	Area (sqft)	Counted as Living Area
19	Bath	8'5" x 4'10"	41 sq. ft	Yes
20	Deck	15'6" x 17'11"	239 sq. ft	No
21	Kitchen	11'0" x 14'7"	159 sq. ft	Yes
22	Garage	14'3" x 14'10"	211 sq. ft	No
23	Foyer	5'0" x 6'3"	32 sq. ft	Yes

304 East High Street, Baldwin City, Kansas 66006, United States

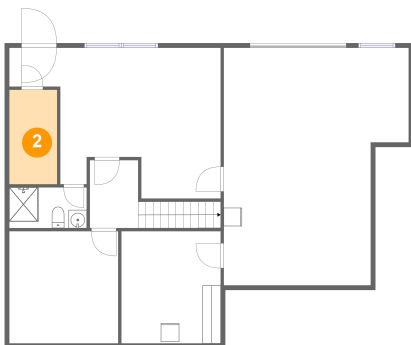
1 Floor 1 - Office



Dimensions: 11'11" x 12'3"
Area: 146 sq. ft
Counted as Living Area: No

Heated: Yes
Finished: Yes
Enclosed: Yes
Contiguous: No
Permitted: Yes
Wet Space: No
Addition: No
Conversion: No

2 Floor 1 - Room

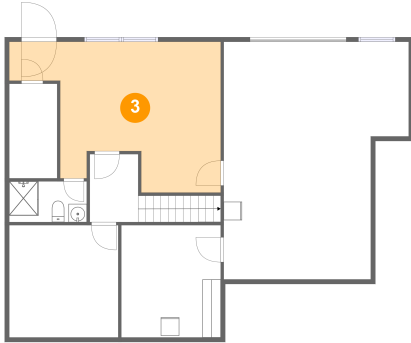


Dimensions: 5'2" x 10'4"
Area: 54 sq. ft
Counted as Living Area: No

Heated: Yes
Finished: Yes
Enclosed: Yes
Contiguous: No
Permitted: Yes
Wet Space: No
Addition: No
Conversion: No

304 East High Street, Baldwin City, Kansas 66006, United States

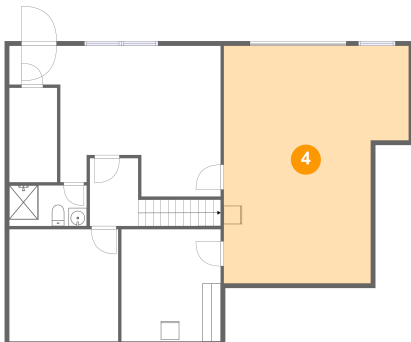
3 Floor 1 - Basement



Dimensions: 23'1" x 16'5"
Area: 281 sq. ft
Counted as Living Area: No

Heated: No
Finished: Yes
Enclosed: Yes
Contiguous: Yes
Permitted: Yes
Wet Space: No
Addition: No
Conversion: No

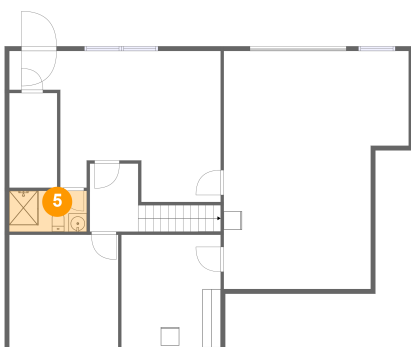
4 Floor 1 - Garage



Dimensions: 20'2" x 25'11"
Area: 460 sq. ft
Counted as Living Area: No

Heated: No
Finished: No
Enclosed: Yes
Contiguous: Yes
Permitted: Yes
Wet Space: No
Addition: No
Conversion: No

5 Floor 1 - Bath

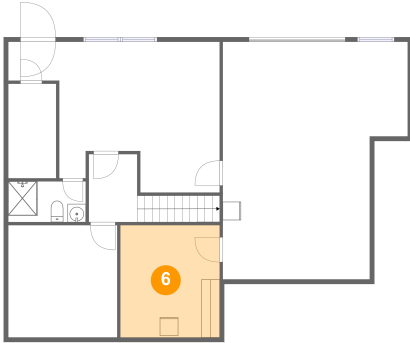


Dimensions: 8'6" x 4'5"
Area: 38 sq. ft
Counted as Living Area: No

Heated: Yes
Finished: Yes
Enclosed: Yes
Contiguous: No
Permitted: Yes
Wet Space: Yes
Addition: No
Conversion: No

304 East High Street, Baldwin City, Kansas 66006, United States

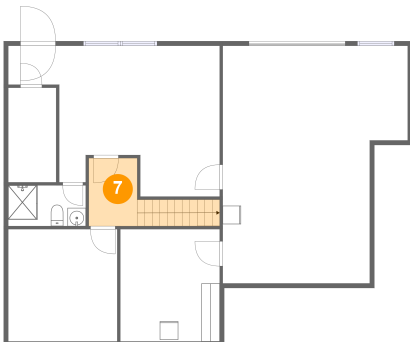
6 Floor 1 - Storage



Dimensions: 10'10" x 12'3"
Area: 133 sq. ft
Counted as Living Area: No

Heated: No
Finished: No
Enclosed: No
Contiguous: Yes
Permitted: Yes
Wet Space: No
Addition: No
Conversion: No

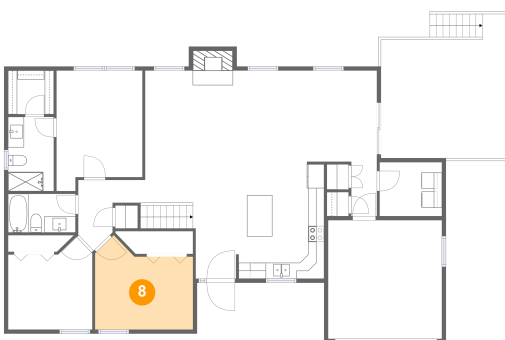
7 Floor 1 - Hall



Dimensions: 5'3" x 7'5"
Area: 65 sq. ft
Counted as Living Area: No

Heated: Yes
Finished: Yes
Enclosed: Yes
Contiguous: No
Permitted: Yes
Wet Space: No
Addition: No
Conversion: No

8 Floor 2 - Bedroom

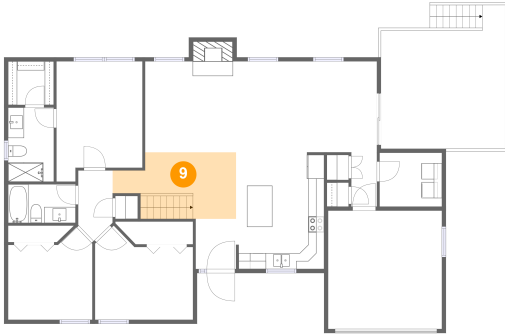


Dimensions: 12'2" x 11'9"
Area: 119 sq. ft
Counted as Living Area:
Yes

Heated: Yes
Finished: Yes
Enclosed: Yes
Contiguous:
Yes
Permitted: Yes
Wet Space: No
Addition: No
Conversion: No

304 East High Street, Baldwin City, Kansas 66006, United States

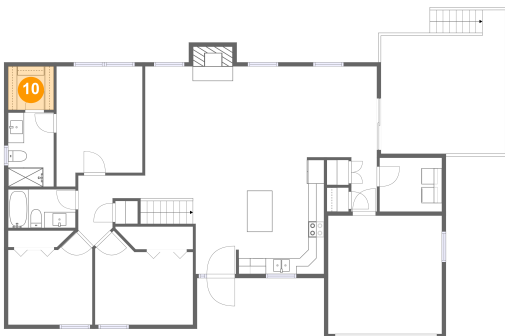
9 Floor 2 - Hall



Dimensions: 15'5" x 8'4"
Area: 108 sq. ft
Counted as Living Area:
Yes

Heated: Yes
Finished: Yes
Enclosed: Yes
Contiguous:
Yes
Permitted: Yes
Wet Space: No
Addition: No
Conversion: No

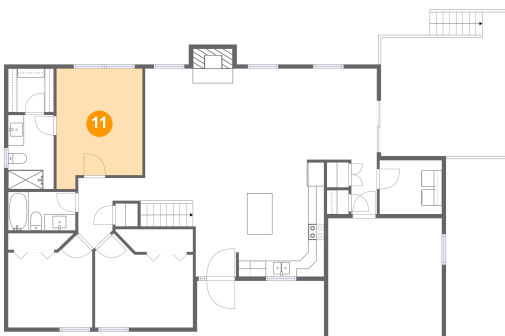
10 Floor 2 - W.i.c.



Dimensions: 5'8" x 5'5"
Area: 31 sq. ft
Counted as Living Area:
Yes

Heated: Yes
Finished: Yes
Enclosed: Yes
Contiguous:
Yes
Permitted: Yes
Wet Space: No
Addition: No
Conversion: No

11 Floor 2 - Primary Bedroom

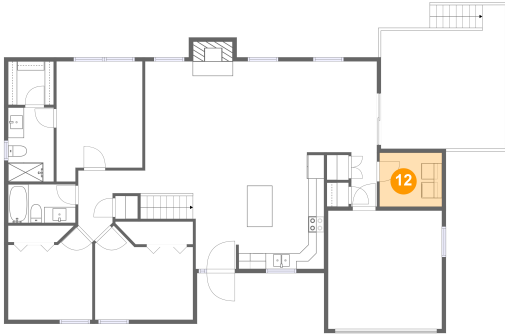


Dimensions: 10'9" x 13'3"
Area: 147 sq. ft
Counted as Living Area:
Yes

Heated: Yes
Finished: Yes
Enclosed: Yes
Contiguous:
Yes
Permitted: Yes
Wet Space: No
Addition: No
Conversion: No

304 East High Street, Baldwin City, Kansas 66006, United States

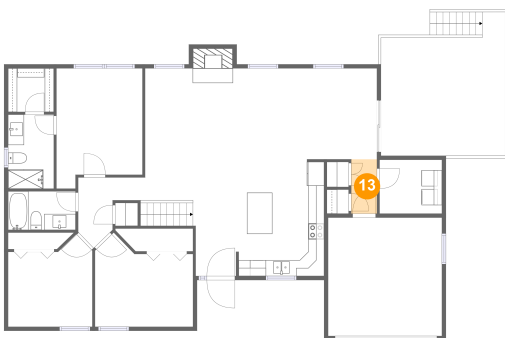
12 Floor 2 - Laundry



Dimensions: 7'9" x 6'9"
Area: 52 sq. ft
Counted as Living Area:
Yes

Heated: Yes
Finished: Yes
Enclosed: Yes
Contiguous:
Yes
Permitted: Yes
Wet Space: No
Addition: No
Conversion: No

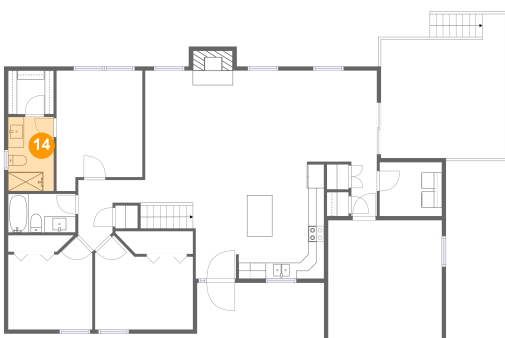
13 Floor 2 - Hall



Dimensions: 3'3" x 6'9"
Area: 22 sq. ft
Counted as Living Area:
Yes

Heated: Yes
Finished: Yes
Enclosed: Yes
Contiguous:
Yes
Permitted: Yes
Wet Space: No
Addition: No
Conversion: No

14 Floor 2 - Bath

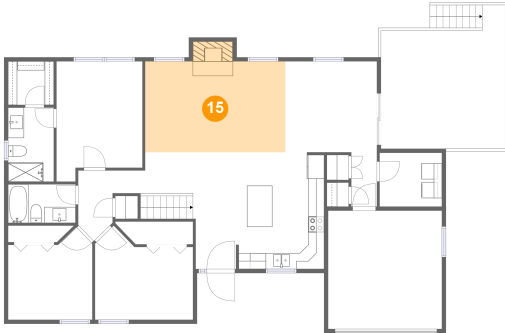


Dimensions: 5'9" x 9'3"
Area: 53 sq. ft
Counted as Living Area:
Yes

Heated: Yes
Finished: Yes
Enclosed: Yes
Contiguous:
Yes
Permitted: Yes
Wet Space: Yes
Addition: No
Conversion: No

**304 East High Street, Baldwin City, Kansas
66006, United States**

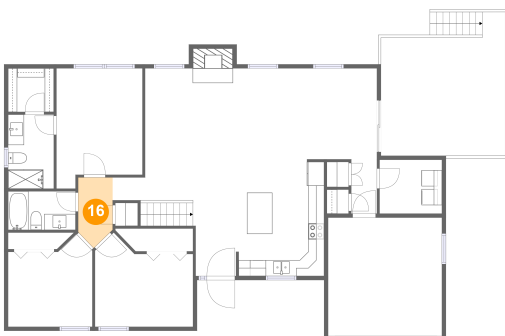
15 Floor 2 - Living Room



Dimensions: 17'6" x 11'4"
Area: 212 sq. ft
Counted as Living Area:
Yes

Heated: Yes
Finished: Yes
Enclosed: Yes
Contiguous:
Yes
Permitted: Yes
Wet Space: No
Addition: No
Conversion: No

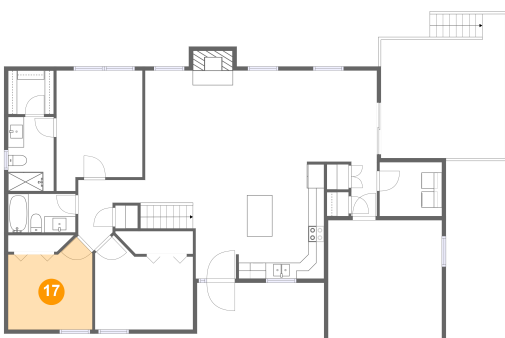
16 Floor 2 - Hall



Dimensions: 4'4" x 8'10"
Area: 33 sq. ft
Counted as Living Area:
Yes

Heated: Yes
Finished: Yes
Enclosed: Yes
Contiguous:
Yes
Permitted: Yes
Wet Space: No
Addition: No
Conversion: No

17 Floor 2 - Bedroom

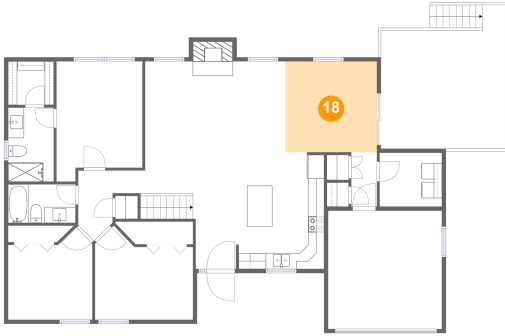


Dimensions: 10'6" x 11'6"
Area: 104 sq. ft
Counted as Living Area:
Yes

Heated: Yes
Finished: Yes
Enclosed: Yes
Contiguous:
Yes
Permitted: Yes
Wet Space: No
Addition: No
Conversion: No

**304 East High Street, Baldwin City, Kansas
66006, United States**

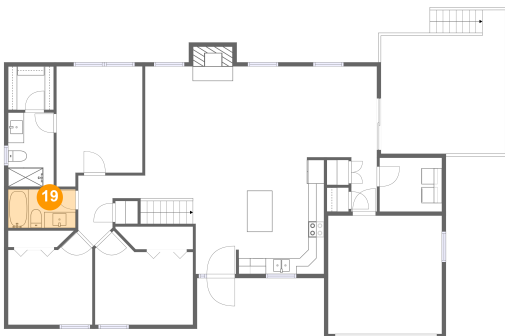
18 Floor 2 - Dining Area



Dimensions: 11'5" x 11'4"
Area: 130 sq. ft
Counted as Living Area:
Yes

Heated: Yes
Finished: Yes
Enclosed: Yes
Contiguous:
Yes
Permitted: Yes
Wet Space: No
Addition: No
Conversion: No

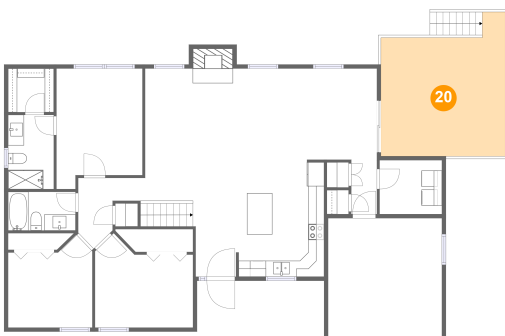
19 Floor 2 - Bath



Dimensions: 8'5" x 4'10"
Area: 41 sq. ft
Counted as Living Area:
Yes

Heated: Yes
Finished: Yes
Enclosed: Yes
Contiguous:
Yes
Permitted: Yes
Wet Space: Yes
Addition: No
Conversion: No

20 Floor 2 - Deck

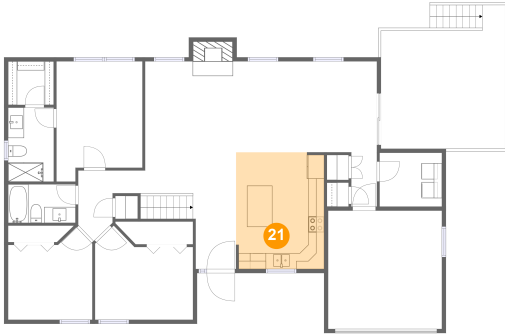


Dimensions: 15'6" x 17'11"
Area: 239 sq. ft
Counted as Living Area: No

Heated: No
Finished: Yes
Enclosed: No
Contiguous: Yes
Permitted: Yes
Wet Space: No
Addition: No
Conversion: No

**304 East High Street, Baldwin City, Kansas
66006, United States**

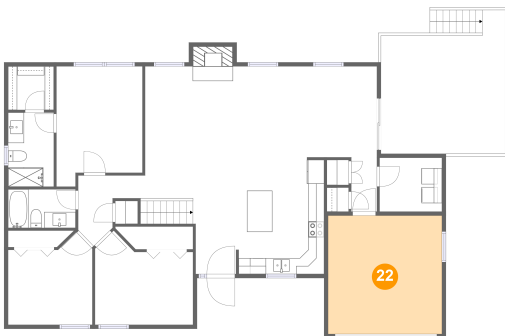
21 Floor 2 - Kitchen



Dimensions: 11'0" x 14'7"
Area: 159 sq. ft
Counted as Living Area:
Yes

Heated: Yes
Finished: Yes
Enclosed: Yes
Contiguous:
Yes
Permitted: Yes
Wet Space: No
Addition: No
Conversion: No

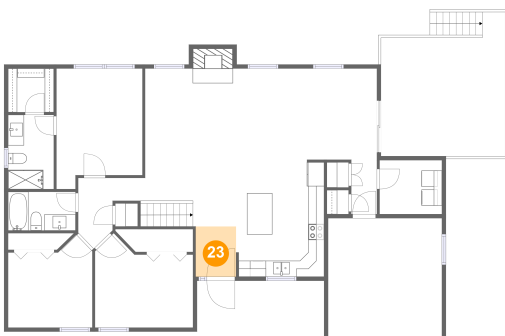
22 Floor 2 - Garage



Dimensions: 14'3" x 14'10"
Area: 211 sq. ft
Counted as Living Area: No

Heated: No
Finished: No
Enclosed: Yes
Contiguous: Yes
Permitted: Yes
Wet Space: No
Addition: No
Conversion: No

23 Floor 2 - Foyer



Dimensions: 5'0" x 6'3"
Area: 32 sq. ft
Counted as Living Area:
Yes

Heated: Yes
Finished: Yes
Enclosed: Yes
Contiguous:
Yes
Permitted: Yes
Wet Space: No
Addition: No
Conversion: No