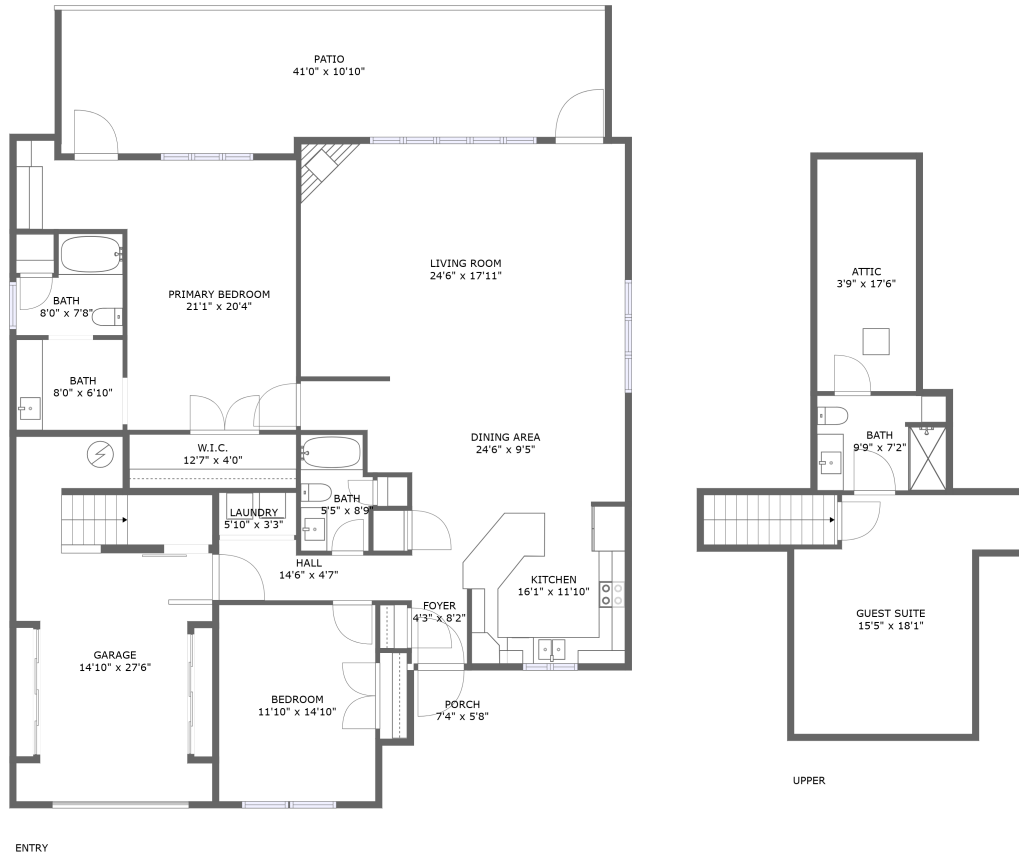


35 Profesional Drive, Westlake Corner, Hardy, Franklin County, Virginia, United States, 24101

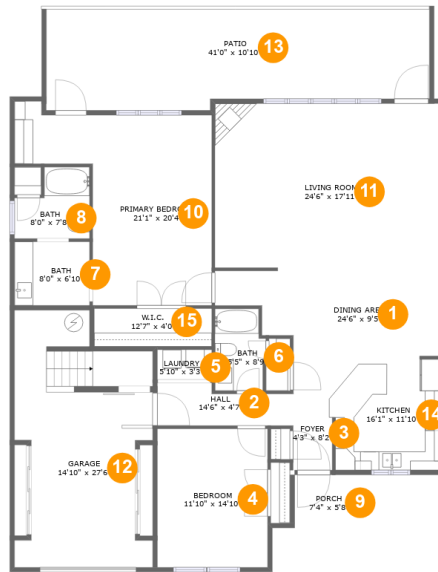


Property Summary

1 garages **3** bedrooms **3** bathrooms **0** half baths

2 floors **2,178** Gross Living Area sqft **3,199** total sqft

35 Profesional Drive, Westlake Corner, Hardy, Franklin County, Virginia, United States, 24101



Room Dimensions

Floor 1

Total sqft: 2641

Living area: 1784

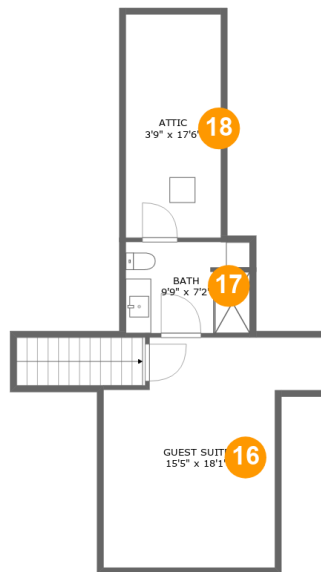
#	Room name	Dimensions	Area (sqft)	Counted as Living Area
1	Dining Area	24'6" x 9'5"	193 sq. ft	Yes
2	Hall	14'6" x 4'7"	56 sq. ft	Yes
3	Foyer	4'3" x 8'2"	34 sq. ft	Yes
4	Bedroom	11'10" x 14'10"	175 sq. ft	Yes
5	Laundry	5'10" x 3'3"	19 sq. ft	Yes
6	Bath	5'5" x 8'9"	44 sq. ft	Yes
7	Bath	8'0" x 6'10"	55 sq. ft	Yes
8	Bath	8'0" x 7'8"	51 sq. ft	Yes
9	Porch	7'4" x 5'8"	42 sq. ft	No
10	Primary Bedroom	21'1" x 20'4"	308 sq. ft	Yes
11	Living Room	24'6" x 17'11"	436 sq. ft	Yes

Scan captured on Fri, 11 Oct 2024 20:12:59 GMT

Information is calculated by CubiCasa technology; deemed highly reliable but not guaranteed.

**35 Profesional Drive, Westlake Corner, Hardy,
Franklin County, Virginia, United States, 24101**

#	Room name	Dimensions	Area (sqft)	Counted as Living Area
12	Garage	14'10" x 27'6"	331 sq. ft	No
13	Patio	41'0" x 10'10"	415 sq. ft	No
14	Kitchen	16'1" x 11'10"	155 sq. ft	Yes
15	W.i.c.	12'7" x 4'0"	51 sq. ft	Yes

**35 Profesional Drive, Westlake Corner, Hardy,
Franklin County, Virginia, United States, 24101****Room Dimensions****Floor 2****Total sqft: 558****Living area: 394**

#	Room name	Dimensions	Area (sqft)	Counted as Living Area
16	Guest Suite	15'5" x 18'1"	236 sq. ft	Yes
17	Bath	9'9" x 7'2"	69 sq. ft	Yes
18	Attic	3'9" x 17'6"	65 sq. ft	No

35 Profesional Drive, Westlake Corner, Hardy, Franklin County, Virginia, United States, 24101

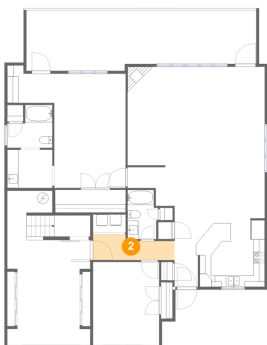
1 Floor 1 - Dining Area



Dimensions: 24'6" x 9'5"
Area: 193 sq. ft
Counted as Living Area:
Yes

Heated: Yes
Finished: Yes
Enclosed: Yes
Contiguous:
Yes
Permitted: Yes
Wet Space: No
Addition: No
Conversion: No

2 Floor 1 - Hall



Dimensions: 14'6" x 4'7"
Area: 56 sq. ft
Counted as Living Area:
Yes

Heated: Yes
Finished: Yes
Enclosed: Yes
Contiguous:
Yes
Permitted: Yes
Wet Space: No
Addition: No
Conversion: No

35 Profesional Drive, Westlake Corner, Hardy, Franklin County, Virginia, United States, 24101

3 Floor 1 - Foyer



Dimensions: 4'3" x 8'2"
Area: 34 sq. ft
Counted as Living Area:
Yes

Heated: Yes
Finished: Yes
Enclosed: Yes
Contiguous:
Yes
Permitted: Yes
Wet Space: No
Addition: No
Conversion: No

4 Floor 1 - Bedroom



Dimensions: 11'10" x 14'10"
Area: 175 sq. ft
Counted as Living Area:
Yes

Heated: Yes
Finished: Yes
Enclosed: Yes
Contiguous:
Yes
Permitted: Yes
Wet Space: No
Addition: No
Conversion: No

5 Floor 1 - Laundry



Dimensions: 5'10" x 3'3"
Area: 19 sq. ft
Counted as Living Area:
Yes

Heated: Yes
Finished: Yes
Enclosed: Yes
Contiguous:
Yes
Permitted: Yes
Wet Space: No
Addition: No
Conversion: No

35 Profesional Drive, Westlake Corner, Hardy, Franklin County, Virginia, United States, 24101

6 Floor 1 - Bath



Dimensions: 5'5" x 8'9"
Area: 44 sq. ft
Counted as Living Area:
Yes

Heated: Yes
Finished: Yes
Enclosed: Yes
Contiguous:
Yes
Permitted: Yes
Wet Space: Yes
Addition: No
Conversion: No

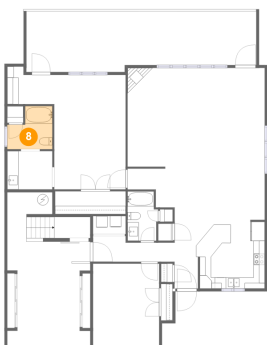
7 Floor 1 - Bath



Dimensions: 8'0" x 6'10"
Area: 55 sq. ft
Counted as Living Area:
Yes

Heated: Yes
Finished: Yes
Enclosed: Yes
Contiguous:
Yes
Permitted: Yes
Wet Space: Yes
Addition: No
Conversion: No

8 Floor 1 - Bath



Dimensions: 8'0" x 7'8"
Area: 51 sq. ft
Counted as Living Area:
Yes

Heated: Yes
Finished: Yes
Enclosed: Yes
Contiguous:
Yes
Permitted: Yes
Wet Space: Yes
Addition: No
Conversion: No

35 Profesional Drive, Westlake Corner, Hardy, Franklin County, Virginia, United States, 24101

9 Floor 1 - Porch



Dimensions: 7'4" x 5'8"
Area: 42 sq. ft
Counted as Living Area: No

Heated: No
Finished: Yes
Enclosed: No
Contiguous: Yes
Permitted: Yes
Wet Space: No
Addition: No
Conversion: No

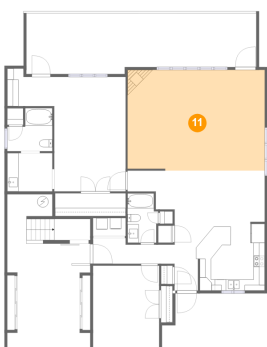
10 Floor 1 - Primary Bedroom



Dimensions: 21'1" x 20'4"
Area: 308 sq. ft
Counted as Living Area:
Yes

Heated: Yes
Finished: Yes
Enclosed: Yes
Contiguous:
Yes
Permitted: Yes
Wet Space: No
Addition: No
Conversion: No

11 Floor 1 - Living Room



Dimensions: 24'6" x 17'11"
Area: 436 sq. ft
Counted as Living Area:
Yes

Heated: Yes
Finished: Yes
Enclosed: Yes
Contiguous:
Yes
Permitted: Yes
Wet Space: No
Addition: No
Conversion: No

35 Profesional Drive, Westlake Corner, Hardy, Franklin County, Virginia, United States, 24101

12 Floor 1 - Garage



Dimensions: 14'10" x 27'6"
Area: 331 sq. ft
Counted as Living Area: No

Heated: No
Finished: No
Enclosed: Yes
Contiguous: Yes
Permitted: Yes
Wet Space: No
Addition: No
Conversion: No

13 Floor 1 - Patio



Dimensions: 41'0" x 10'10"
Area: 415 sq. ft
Counted as Living Area: No

Heated: No
Finished: Yes
Enclosed: No
Contiguous: No
Permitted: Yes
Wet Space: No
Addition: No
Conversion: No

14 Floor 1 - Kitchen



Dimensions: 16'1" x 11'10"
Area: 155 sq. ft
Counted as Living Area:
Yes

Heated: Yes
Finished: Yes
Enclosed: Yes
Contiguous:
Yes
Permitted: Yes
Wet Space: No
Addition: No
Conversion: No

35 Profesional Drive, Westlake Corner, Hardy, Franklin County, Virginia, United States, 24101

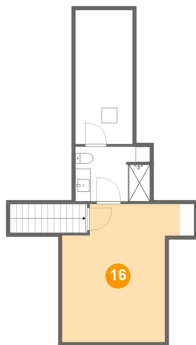
15 Floor 1 - W.i.c.



Dimensions: 12'7" x 4'0"
Area: 51 sq. ft
Counted as Living Area:
Yes

Heated: Yes
Finished: Yes
Enclosed: Yes
Contiguous:
Yes
Permitted: Yes
Wet Space: No
Addition: No
Conversion: No

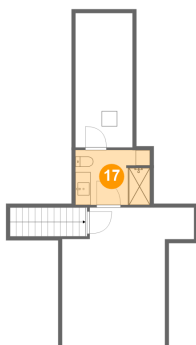
16 Floor 2 - Guest Suite



Dimensions: 15'5" x 18'1"
Area: 236 sq. ft
Counted as Living Area:
Yes

Heated: Yes
Finished: Yes
Enclosed: Yes
Contiguous:
Yes
Permitted: Yes
Wet Space: No
Addition: No
Conversion: No

17 Floor 2 - Bath

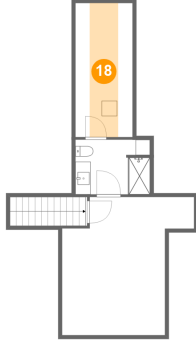


Dimensions: 9'9" x 7'2"
Area: 69 sq. ft
Counted as Living Area:
Yes

Heated: Yes
Finished: Yes
Enclosed: Yes
Contiguous:
Yes
Permitted: Yes
Wet Space: Yes
Addition: No
Conversion: No

**35 Profesional Drive, Westlake Corner, Hardy,
Franklin County, Virginia, United States, 24101**

18 Floor 2 - Attic



Dimensions: 3'9" x 17'6"
Area: 65 sq. ft
Counted as Living Area: No

Heated: No
Finished: No
Enclosed: Yes
Contiguous: Yes
Permitted: Yes
Wet Space: No
Addition: No
Conversion: No