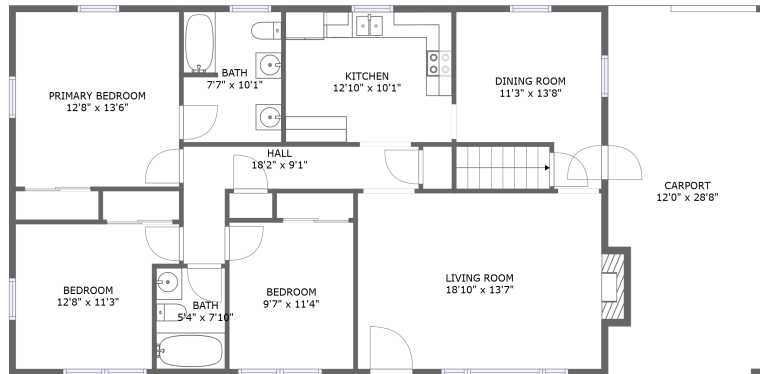
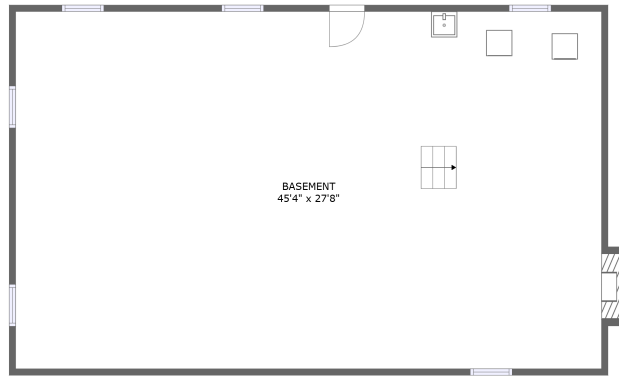


2908 Lofton Road, Cave Spring, Roanoke, Roanoke County, Virginia, United States, 24018



FLOOR 2




FLOOR 1

Property Summary

 **0** garages

 **3** bedrooms

 **2** bathrooms

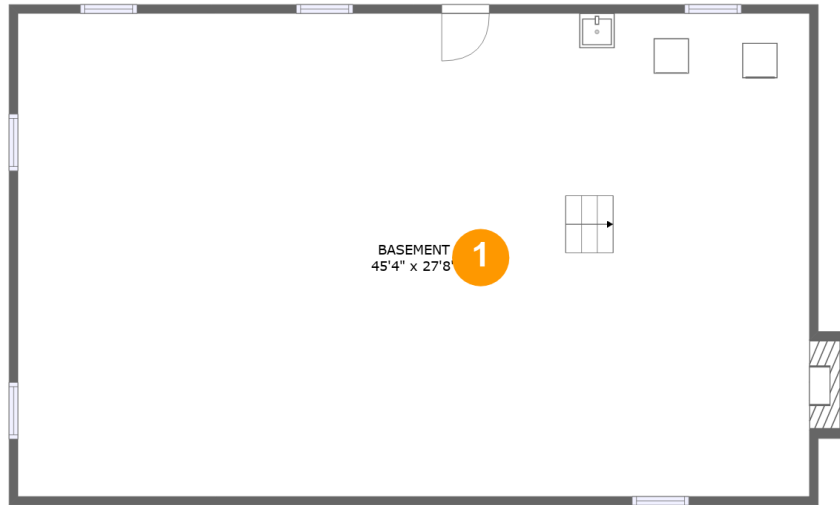
 **0** half baths

 **2** floors

 **1,328** Gross Living Area sqft

 **3,026** total sqft

**2908 Lofton Road, Cave Spring, Roanoke,
Roanoke County, Virginia, United States, 24018**



Room Dimensions

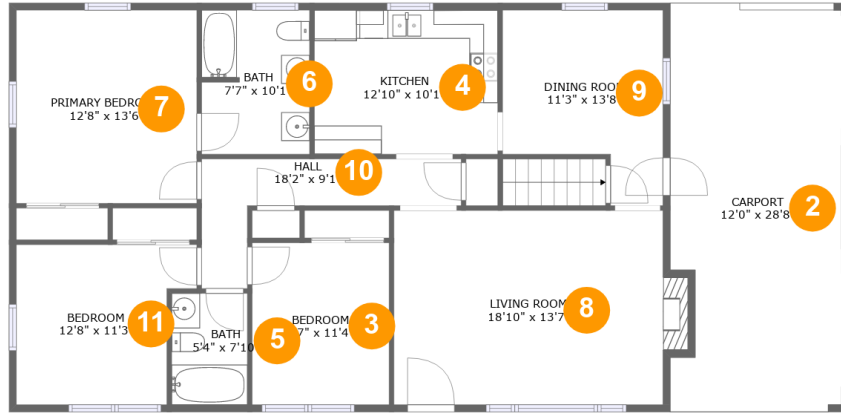
Floor 1

Total sqft: 1339

Living area: 0

#	Room name	Dimensions	Area (sqft)	Counted as Living Area
1	Basement	45'4" x 27'8"	1263 sq. ft	No

2908 Lofton Road, Cave Spring, Roanoke, Roanoke County, Virginia, United States, 24018



Room Dimensions

Floor 2

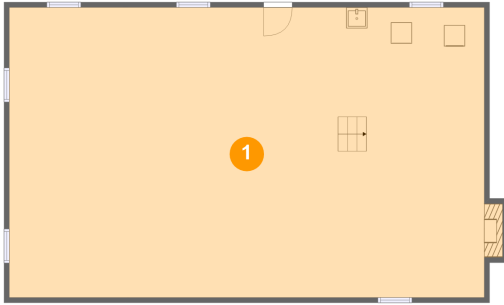
Total sqft: 1687

Living area: 1328

#	Room name	Dimensions	Area (sqft)	Counted as Living Area
2	Carport	12'0" x 28'8"	346 sq. ft	No
3	Bedroom	9'7" x 11'4"	109 sq. ft	Yes
4	Kitchen	12'10" x 10'1"	130 sq. ft	Yes
5	Bath	5'4" x 7'10"	41 sq. ft	Yes
6	Bath	7'7" x 10'1"	76 sq. ft	Yes
7	Primary Bedroom	12'8" x 13'6"	171 sq. ft	Yes
8	Living Room	18'10" x 13'7"	266 sq. ft	Yes
9	Dining Room	11'3" x 13'8"	127 sq. ft	Yes
10	Hall	18'2" x 9'1"	78 sq. ft	Yes
11	Bedroom	12'8" x 11'3"	125 sq. ft	Yes

2908 Lofton Road, Cave Spring, Roanoke, Roanoke County, Virginia, United States, 24018

1 Floor 1 - Basement



Dimensions: 45'4" x 27'8"
Area: 1263 sq. ft
Counted as Living Area: No

Heated: No
Finished: No
Enclosed: Yes
Contiguous: Yes
Permitted: Yes
Wet Space: No
Addition: No
Conversion: No

2 Floor 2 - Carport



Dimensions: 12'0" x 28'8"
Area: 346 sq. ft
Counted as Living Area: No

Heated: No
Finished: Yes
Enclosed: No
Contiguous: Yes
Permitted: Yes
Wet Space: No
Addition: No
Conversion: No

2908 Lofton Road, Cave Spring, Roanoke, Roanoke County, Virginia, United States, 24018

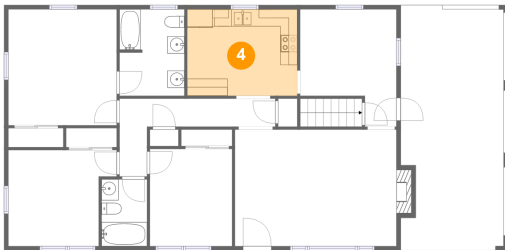
3 Floor 2 - Bedroom



Dimensions: 9'7" x 11'4"
Area: 109 sq. ft
Counted as Living Area:
Yes

Heated: Yes
Finished: Yes
Enclosed: Yes
Contiguous:
Yes
Permitted: Yes
Wet Space: No
Addition: No
Conversion: No

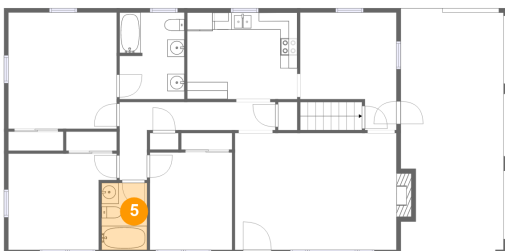
4 Floor 2 - Kitchen



Dimensions: 12'10" x 10'1"
Area: 130 sq. ft
Counted as Living Area:
Yes

Heated: Yes
Finished: Yes
Enclosed: Yes
Contiguous:
Yes
Permitted: Yes
Wet Space: No
Addition: No
Conversion: No

5 Floor 2 - Bath



Dimensions: 5'4" x 7'10"
Area: 41 sq. ft
Counted as Living Area:
Yes

Heated: Yes
Finished: Yes
Enclosed: Yes
Contiguous:
Yes
Permitted: Yes
Wet Space: Yes
Addition: No
Conversion: No

2908 Lofton Road, Cave Spring, Roanoke, Roanoke County, Virginia, United States, 24018

6 Floor 2 - Bath



Dimensions: 7'7" x 10'1"
Area: 76 sq. ft
Counted as Living Area:
Yes

Heated: Yes
Finished: Yes
Enclosed: Yes
Contiguous:
Yes
Permitted: Yes
Wet Space: Yes
Addition: No
Conversion: No

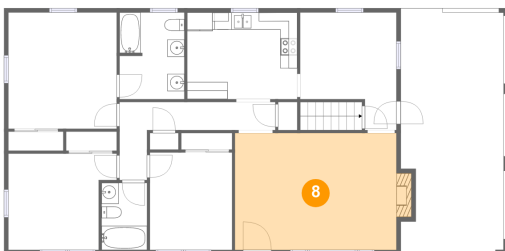
7 Floor 2 - Primary Bedroom



Dimensions: 12'8" x 13'6"
Area: 171 sq. ft
Counted as Living Area:
Yes

Heated: Yes
Finished: Yes
Enclosed: Yes
Contiguous:
Yes
Permitted: Yes
Wet Space: No
Addition: No
Conversion: No

8 Floor 2 - Living Room



Dimensions: 18'10" x 13'7"
Area: 266 sq. ft
Counted as Living Area:
Yes

Heated: Yes
Finished: Yes
Enclosed: Yes
Contiguous:
Yes
Permitted: Yes
Wet Space: No
Addition: No
Conversion: No

2908 Lofton Road, Cave Spring, Roanoke, Roanoke County, Virginia, United States, 24018

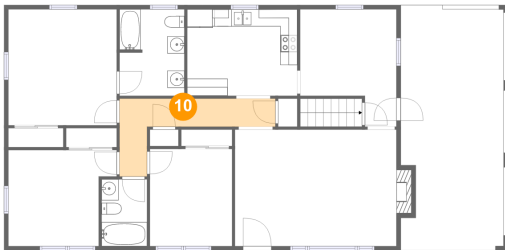
9 Floor 2 - Dining Room



Dimensions: 11'3" x 13'8"
Area: 127 sq. ft
Counted as Living Area:
Yes

Heated: Yes
Finished: Yes
Enclosed: Yes
Contiguous:
Yes
Permitted: Yes
Wet Space: No
Addition: No
Conversion: No

10 Floor 2 - Hall



Dimensions: 18'2" x 9'1"
Area: 78 sq. ft
Counted as Living Area:
Yes

Heated: Yes
Finished: Yes
Enclosed: Yes
Contiguous:
Yes
Permitted: Yes
Wet Space: No
Addition: No
Conversion: No

11 Floor 2 - Bedroom



Dimensions: 12'8" x 11'3"
Area: 125 sq. ft
Counted as Living Area:
Yes

Heated: Yes
Finished: Yes
Enclosed: Yes
Contiguous:
Yes
Permitted: Yes
Wet Space: No
Addition: No
Conversion: No