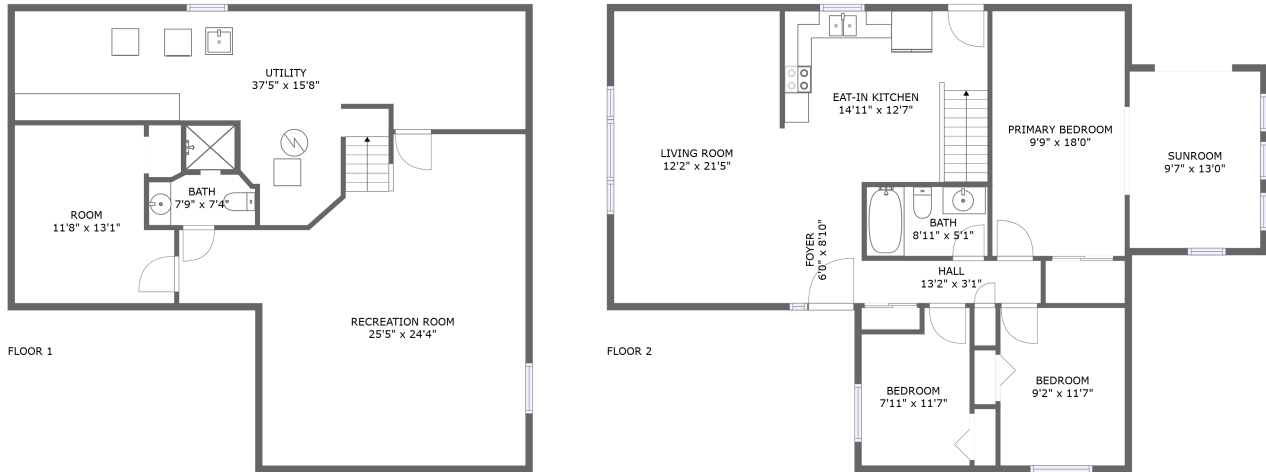


27 Ashmore Drive, The Maples, Seven Oaks, Winnipeg, Manitoba, Canada, R2P 0Z8




Property Summary

 **0** garages

 **3** bedrooms

 **2** bathrooms

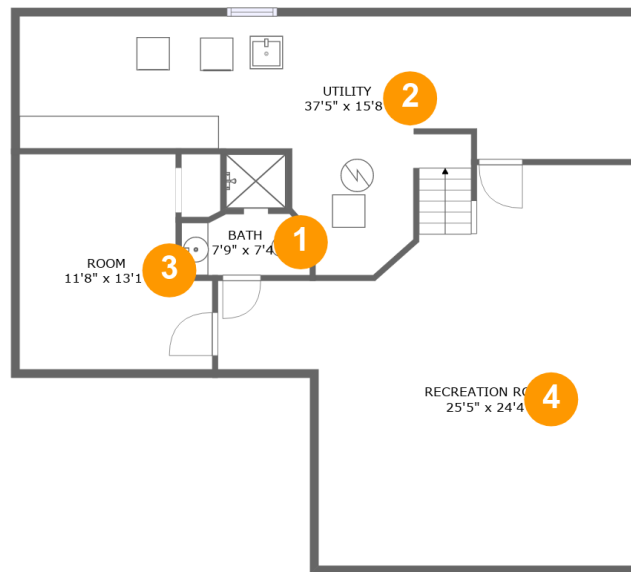
 **0** half baths

 **2** floors

 **1,966** Gross Living Area sqft

 **2,346** total sqft

27 Ashmore Drive, The Maples, Seven Oaks, Winnipeg, Manitoba, Canada, R2P 0Z8



Room Dimensions

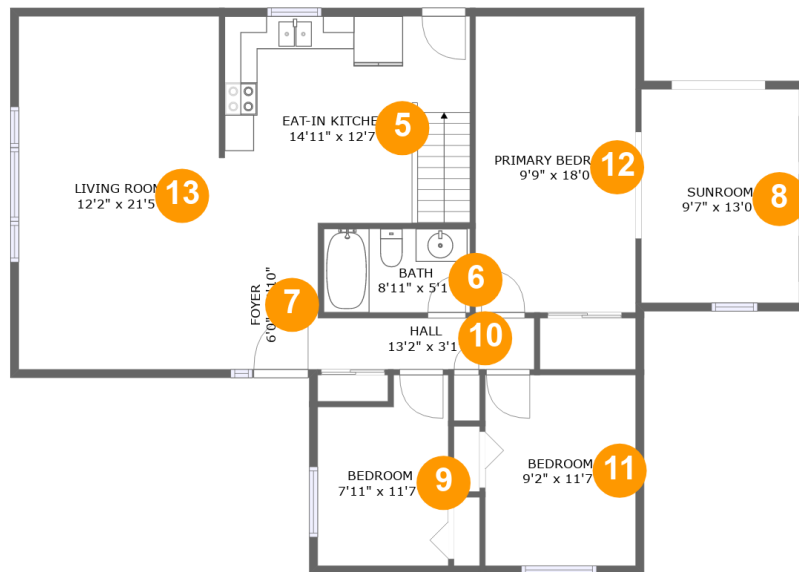
Floor 1

Total sqft: 1104

Living area: 724

#	Room name	Dimensions	Area (sqft)	Counted as Living Area
1	Bath	7'9" x 7'4"	40 sq. ft	Yes
2	Utility	37'5" x 15'8"	352 sq. ft	No
3	Room	11'8" x 13'1"	136 sq. ft	Yes
4	Recreation Room	25'5" x 24'4"	468 sq. ft	Yes

27 Ashmore Drive, The Maples, Seven Oaks, Winnipeg, Manitoba, Canada, R2P 0Z8



Room Dimensions

Floor 2

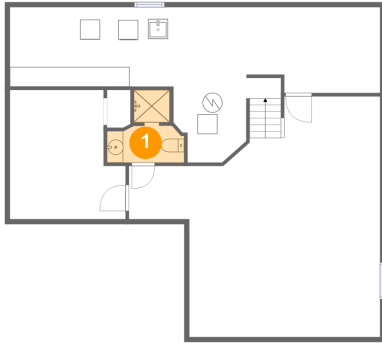
Total sqft: 1242

Living area: 1242

#	Room name	Dimensions	Area (sqft)	Counted as Living Area
5	Eat-in Kitchen	14'11" x 12'7"	188 sq. ft	Yes
6	Bath	8'11" x 5'1"	45 sq. ft	Yes
7	Foyer	6'0" x 8'10"	53 sq. ft	Yes
8	Sunroom	9'7" x 13'0"	124 sq. ft	Yes
9	Bedroom	7'11" x 11'7"	83 sq. ft	Yes
10	Hall	13'2" x 3'1"	41 sq. ft	Yes
11	Bedroom	9'2" x 11'7"	106 sq. ft	Yes
12	Primary Bedroom	9'9" x 18'0"	175 sq. ft	Yes
13	Living Room	12'2" x 21'5"	261 sq. ft	Yes

27 Ashmore Drive, The Maples, Seven Oaks, Winnipeg, Manitoba, Canada, R2P 0Z8

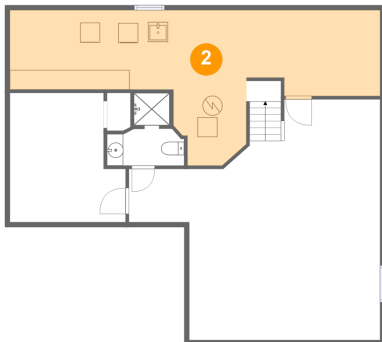
1 Floor 1 - Bath



Dimensions: 7'9" x 7'4"
Area: 40 sq. ft
Counted as Living Area:
Yes

Heated: Yes
Finished: Yes
Enclosed: Yes
Contiguous:
Yes
Permitted: Yes
Wet Space: Yes
Addition: No
Conversion: No

2 Floor 1 - Utility

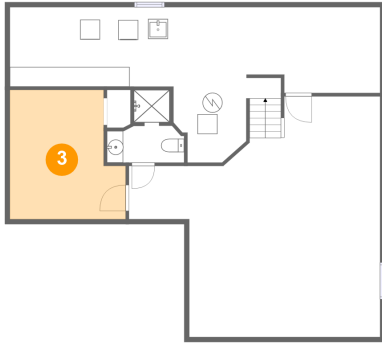


Dimensions: 37'5" x 15'8"
Area: 352 sq. ft
Counted as Living Area: No

Heated: Yes
Finished: No
Enclosed: Yes
Contiguous: Yes
Permitted: Yes
Wet Space: No
Addition: No
Conversion: No

27 Ashmore Drive, The Maples, Seven Oaks, Winnipeg, Manitoba, Canada, R2P 0Z8

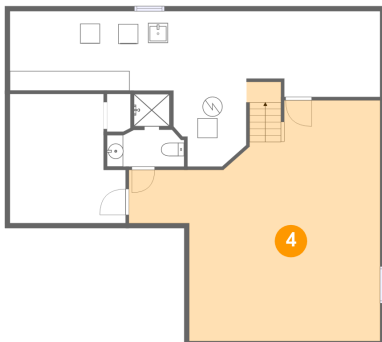
3 Floor 1 - Room



Dimensions: 11'8" x 13'1"
Area: 136 sq. ft
Counted as Living Area:
Yes

Heated: Yes
Finished: Yes
Enclosed: Yes
Contiguous:
Yes
Permitted: Yes
Wet Space: No
Addition: No
Conversion: No

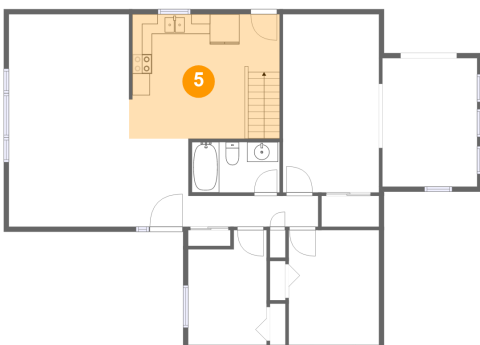
4 Floor 1 - Recreation Room



Dimensions: 25'5" x 24'4"
Area: 468 sq. ft
Counted as Living Area:
Yes

Heated: Yes
Finished: Yes
Enclosed: Yes
Contiguous:
Yes
Permitted: Yes
Wet Space: No
Addition: No
Conversion: No

5 Floor 2 - Eat-in Kitchen

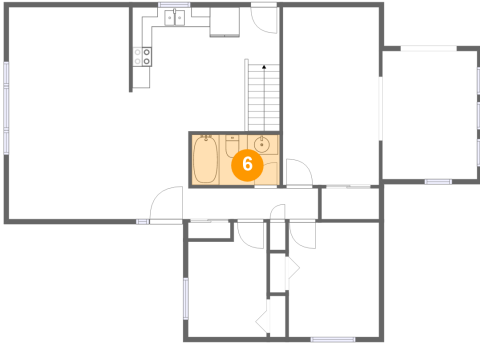


Dimensions: 14'11" x 12'7"
Area: 188 sq. ft
Counted as Living Area:
Yes

Heated: Yes
Finished: Yes
Enclosed: Yes
Contiguous:
Yes
Permitted: Yes
Wet Space: No
Addition: No
Conversion: No

27 Ashmore Drive, The Maples, Seven Oaks, Winnipeg, Manitoba, Canada, R2P 0Z8

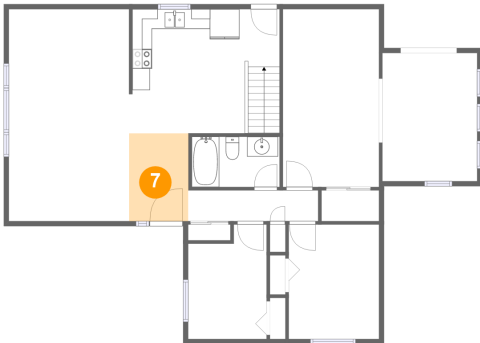
6 Floor 2 - Bath



Dimensions: 8'11" x 5'1"
Area: 45 sq. ft
Counted as Living Area:
Yes

Heated: Yes
Finished: Yes
Enclosed: Yes
Contiguous:
Yes
Permitted: Yes
Wet Space: Yes
Addition: No
Conversion: No

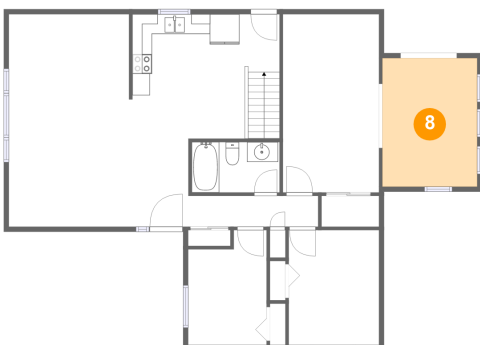
7 Floor 2 - Foyer



Dimensions: 6'0" x 8'10"
Area: 53 sq. ft
Counted as Living Area:
Yes

Heated: Yes
Finished: Yes
Enclosed: Yes
Contiguous:
Yes
Permitted: Yes
Wet Space: No
Addition: No
Conversion: No

8 Floor 2 - Sunroom

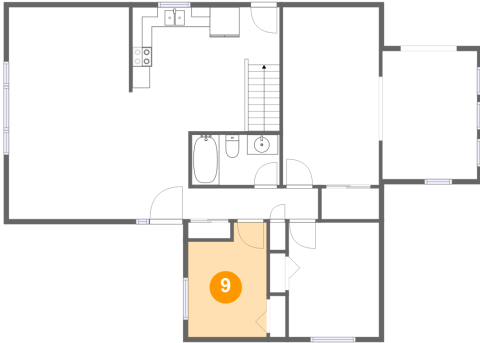


Dimensions: 9'7" x 13'0"
Area: 124 sq. ft
Counted as Living Area:
Yes

Heated: Yes
Finished: Yes
Enclosed: Yes
Contiguous:
Yes
Permitted: Yes
Wet Space: No
Addition: No
Conversion: No

27 Ashmore Drive, The Maples, Seven Oaks, Winnipeg, Manitoba, Canada, R2P 0Z8

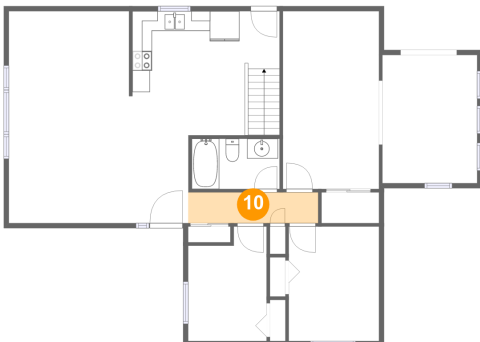
9 Floor 2 - Bedroom



Dimensions: 7'11" x 11'7"
Area: 83 sq. ft
Counted as Living Area:
Yes

Heated: Yes
Finished: Yes
Enclosed: Yes
Contiguous:
Yes
Permitted: Yes
Wet Space: No
Addition: No
Conversion: No

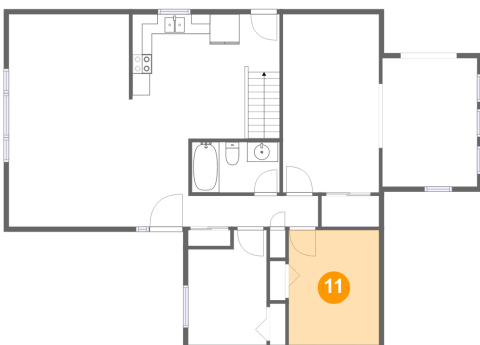
10 Floor 2 - Hall



Dimensions: 13'2" x 3'1"
Area: 41 sq. ft
Counted as Living Area:
Yes

Heated: Yes
Finished: Yes
Enclosed: Yes
Contiguous:
Yes
Permitted: Yes
Wet Space: No
Addition: No
Conversion: No

11 Floor 2 - Bedroom

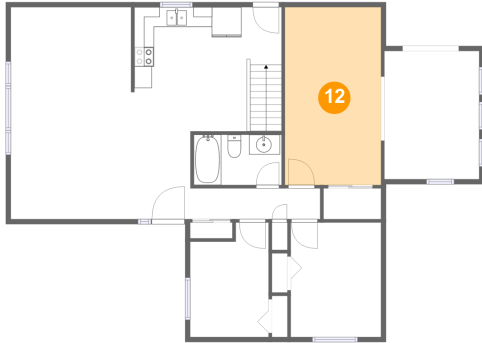


Dimensions: 9'2" x 11'7"
Area: 106 sq. ft
Counted as Living Area:
Yes

Heated: Yes
Finished: Yes
Enclosed: Yes
Contiguous:
Yes
Permitted: Yes
Wet Space: No
Addition: No
Conversion: No

**27 Ashmore Drive, The Maples, Seven Oaks,
Winnipeg, Manitoba, Canada, R2P 0Z8**

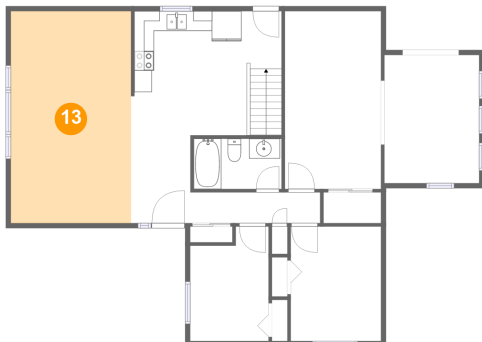
12 Floor 2 - Primary Bedroom



Dimensions: 9'9" x 18'0"
Area: 175 sq. ft
Counted as Living Area:
Yes

Heated: Yes
Finished: Yes
Enclosed: Yes
Contiguous:
Yes
Permitted: Yes
Wet Space: No
Addition: No
Conversion: No

13 Floor 2 - Living Room



Dimensions: 12'2" x 21'5"
Area: 261 sq. ft
Counted as Living Area:
Yes

Heated: Yes
Finished: Yes
Enclosed: Yes
Contiguous:
Yes
Permitted: Yes
Wet Space: No
Addition: No
Conversion: No