



Home report


4776 Sciota St,Pittsburgh,PA,US





Property summary


 **0** Garages


 **2** Bedrooms

 **2** Bathrooms

 **1** Half baths

 **4** Floors

 **1,867** Gross living area sqft

 **2,884** Total sqft

Home report

4776 Sciota St,Pittsburgh,PA,US



Room dimensions

Floor 1 Total sqft: 675 Living area: 0

#		Dimensions	sqft	Counted as living area
1	Basement	14'9" x 45'9"	533 sq. ft	No
2	Storage	6'4" x 9'3"	59 sq. ft	No

Home report

4776 Sciota St,Pittsburgh,PA,US



Room dimensions

Floor 2 Total sqft: 979 Living area: 718

#		Dimensions	sqft	Counted as living area
3	Dining Area	14'9" x 13'10"	196 sq. ft	Yes
4	Porch	8'6" x 3'11"	45 sq. ft	No
5	WC	5'0" x 7'0"	35 sq. ft	Yes
6	Living Room	14'9" x 17'1"	224 sq. ft	Yes
7	Covered Patio	16'5" x 10'8"	216 sq. ft	No
8	Kitchen	10'7" x 15'2"	162 sq. ft	Yes

Home report

4776 Sciota St,Pittsburgh,PA,US



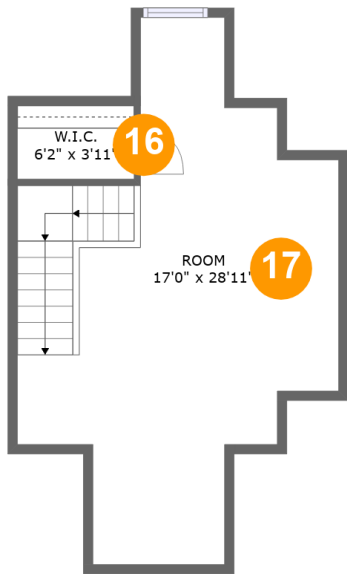
Room dimensions

Floor 3 Total sqft: 834 Living area: 761

#		Dimensions	sqft	Counted as living area
9	Bedroom	17'0" x 13'4"	227 sq. ft	Yes
10	Hall	4'0" x 7'11"	30 sq. ft	Yes
11	Hall	3'6" x 6'3"	92 sq. ft	Yes
12	Bath	5'0" x 7'7"	38 sq. ft	Yes
13	Balcony	5'0" x 14'5"	73 sq. ft	No
14	Bath	5'0" x 10'8"	54 sq. ft	Yes
15	Primary Bedroom	11'7" x 17'7"	184 sq. ft	Yes

Home report

4776 Sciota St,Pittsburgh,PA,US



Room dimensions

Floor 4 Total sqft: 396 Living area: 388

#		Dimensions	sqft	Counted as living area
16	W.I.C.	6'2" x 3'11"	24 sq. ft	Yes
17	Room	17'0" x 28'11"	317 sq. ft	Yes

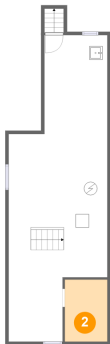
1 Floor 1 - Basement



Dimensions: 14'9" x 45'9"
Area: 533 sq. ft
Counted as living area: No

Heated: Yes
Finished: No
Enclosed: Yes
Contiguous: Yes
Permitted: Yes
Wet space: No
Addition: No
Conversion: No

2 Floor 1 - Storage



Dimensions: 6'4" x 9'3"
Area: 59 sq. ft
Counted as living area: No

Heated: No
Finished: No
Enclosed: No
Contiguous: Yes
Permitted: Yes
Wet space: No
Addition: No
Conversion: No

3 Floor 2 - Dining Area



Dimensions: 14'9" x 13'10"
Area: 196 sq. ft
Counted as living area: Yes

Heated: Yes
Finished: Yes
Enclosed: Yes
Contiguous: Yes
Permitted: Yes
Wet space: No
Addition: No
Conversion: No

4 Floor 2 - Porch



Dimensions: 8'6" x 3'11"
Area: 45 sq. ft
Counted as living area: No

Heated: No
Finished: Yes
Enclosed: No
Contiguous: Yes
Permitted: Yes
Wet space: No
Addition: No
Conversion: No

5 Floor 2 - WC



Dimensions: 5'0" x 7'0"
Area: 35 sq. ft
Counted as living area: Yes

Heated: Yes
Finished: Yes
Enclosed: Yes
Contiguous: Yes
Permitted: Yes
Wet space: Yes
Addition: No
Conversion: No

6 Floor 2 - Living Room



Dimensions: 14'9" x 17'1"
Area: 224 sq. ft
Counted as living area: Yes

Heated: Yes
Finished: Yes
Enclosed: Yes
Contiguous: Yes
Permitted: Yes
Wet space: No
Addition: No
Conversion: No

7 Floor 2 - Covered Patio



Dimensions: 16'5" x 10'8"
Area: 216 sq. ft
Counted as living area: No

Heated: No
Finished: Yes
Enclosed: No
Contiguous: Yes
Permitted: Yes
Wet space: No
Addition: No
Conversion: No

8 Floor 2 - Kitchen



Dimensions: 10'7" x 15'2"
Area: 162 sq. ft
Counted as living area: Yes

Heated: Yes
Finished: Yes
Enclosed: Yes
Contiguous: Yes
Permitted: Yes
Wet space: No
Addition: No
Conversion: No

9 Floor 3 - Bedroom



Dimensions: 17'0" x 13'4"
Area: 227 sq. ft
Counted as living area: Yes

Heated: Yes
Finished: Yes
Enclosed: Yes
Contiguous: Yes
Permitted: Yes
Wet space: No
Addition: No
Conversion: No

10 Floor 3 - Hall



Dimensions: 4'0" x 7'11"
Area: 30 sq. ft
Counted as living area: Yes

Heated: Yes
Finished: Yes
Enclosed: Yes
Contiguous: Yes
Permitted: Yes
Wet space: No
Addition: No
Conversion: No

11 Floor 3 - Hall



Dimensions: 3'6" x 6'3"
Area: 92 sq. ft
Counted as living area: Yes

Heated: Yes
Finished: Yes
Enclosed: Yes
Contiguous: Yes
Permitted: Yes
Wet space: No
Addition: No
Conversion: No

12 Floor 3 - Bath



Dimensions: 5'0" x 7'7"
Area: 38 sq. ft
Counted as living area: Yes

Heated: Yes
Finished: Yes
Enclosed: Yes
Contiguous: Yes
Permitted: Yes
Wet space: Yes
Addition: No
Conversion: No

13 Floor 3 - Balcony



Dimensions: 5'0" x 14'5"
Area: 73 sq. ft
Counted as living area: No

Heated: No
Finished: Yes
Enclosed: No
Contiguous: Yes
Permitted: Yes
Wet space: No
Addition: No
Conversion: No

14 Floor 3 - Bath



Dimensions: 5'0" x 10'8"
Area: 54 sq. ft
Counted as living area: Yes

Heated: Yes
Finished: Yes
Enclosed: Yes
Contiguous: Yes
Permitted: Yes
Wet space: Yes
Addition: No
Conversion: No

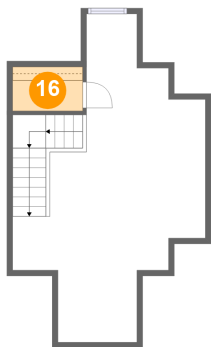
15 Floor 3 - Primary Bedroom



Dimensions: 11'7" x 17'7"
Area: 184 sq. ft
Counted as living area: Yes

Heated: Yes
Finished: Yes
Enclosed: Yes
Contiguous: Yes
Permitted: Yes
Wet space: No
Addition: No
Conversion: No

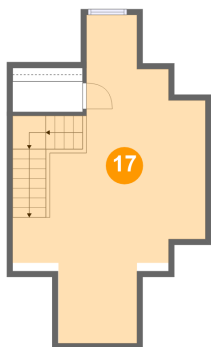
16 Floor 4 - W.I.C.



Dimensions: 6'2" x 3'11"
Area: 24 sq. ft
Counted as living area: Yes

Heated: Yes
Finished: Yes
Enclosed: Yes
Contiguous: Yes
Permitted: Yes
Wet space: No
Addition: No
Conversion: No

17 Floor 4 - Room



Dimensions: 17'0" x 28'11"
Area: 317 sq. ft
Counted as living area: Yes

Heated: Yes
Finished: Yes
Enclosed: Yes
Contiguous: Yes
Permitted: Yes
Wet space: No
Addition: No
Conversion: No