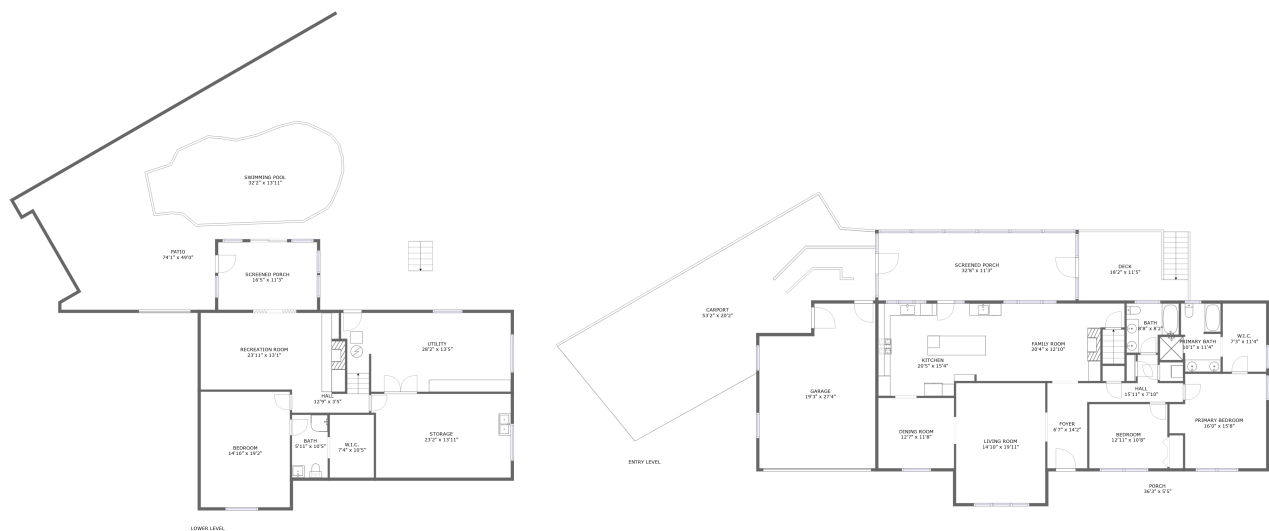




Home report


4814 Westhill Drive, Sugar Loaf Farms, Cave Spring, Roanoke, Roanoke County, Virginia, United States, 24018




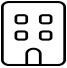
Property summary


**1** Garages


**3** Bedrooms

**3** Bathrooms

**0** Half baths

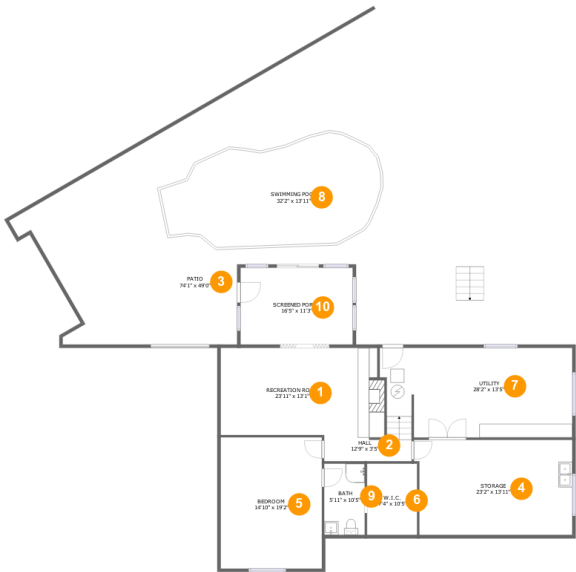
**2** Floors

**2,795** Gross living area sqft

**8,150** Total sqft

Home report

4814 Westhill Drive, Sugar Loaf Farms, Cave Spring, Roanoke,
Roanoke County, Virginia, United States, 24018



Room dimensions

Floor 1

Total sqft: 3970 Living area: 854

#		Dimensions	sqft	Counted as living area
1	Recreation Room	23'11" x 13'1"	303 sq. ft	Yes
2	Hall	12'9" x 3'5"	44 sq. ft	Yes
3	Patio	74'1" x 49'0"	2190 sq. ft	No
4	Storage	23'2" x 13'11"	313 sq. ft	No
5	Bedroom	14'10" x 19'2"	284 sq. ft	Yes
6	W.I.C.	7'4" x 10'5"	76 sq. ft	Yes
7	Utility	28'2" x 13'5"	359 sq. ft	No
8	Swimming Pool	32'2" x 13'11"	403 sq. ft	No
9	Bath	5'11" x 10'5"	62 sq. ft	Yes
10	Screened Porch	16'5" x 11'3"	184 sq. ft	No

Home report

4814 Westhill Drive, Sugar Loaf Farms, Cave Spring, Roanoke,
Roanoke County, Virginia, United States, 24018



Room dimensions

Floor 2 Total sqft: 4180 Living area: 1941

#		Dimensions	sqft	Counted as living area
11	Screened Porch	32'8" x 11'3"	367 sq. ft	No
12	Bath	8'8" x 8'2"	60 sq. ft	Yes
13	Foyer	6'7" x 14'2"	94 sq. ft	Yes
14	Carport	53'2" x 20'2"	934 sq. ft	No
15	Deck	18'2" x 11'5"	204 sq. ft	No
16	Porch	36'3" x 5'5"	197 sq. ft	No
17	Living Room	14'10" x 19'11"	295 sq. ft	Yes
18	Garage	19'3" x 27'4"	476 sq. ft	No
19	Bedroom	12'11" x 10'8"	138 sq. ft	Yes
20	Hall	15'11" x 7'10"	66 sq. ft	Yes
21	W.I.C.	7'3" x 11'4"	82 sq. ft	Yes

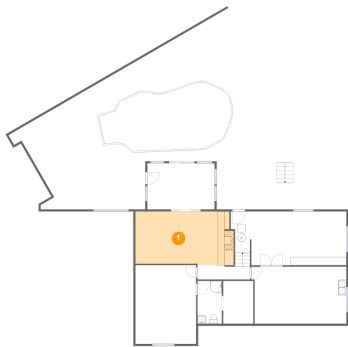
Home report

**4814 Westhill Drive, Sugar Loaf Farms, Cave Spring, Roanoke,
Roanoke County, Virginia, United States, 24018**

#		Dimensions	sqft	Counted as living area
22	Kitchen	20'5" x 15'4"	293 sq. ft	Yes
23	Family Room	20'4" x 12'10"	227 sq. ft	Yes
24	Primary Bath	10'1" x 11'4"	85 sq. ft	Yes
25	Dining Room	12'7" x 11'8"	147 sq. ft	Yes
26	Primary Bedroom	16'0" x 15'8"	223 sq. ft	Yes

4814 Westhill Drive, Sugar Loaf Farms, Cave Spring, Roanoke,
Roanoke County, Virginia, United States, 24018

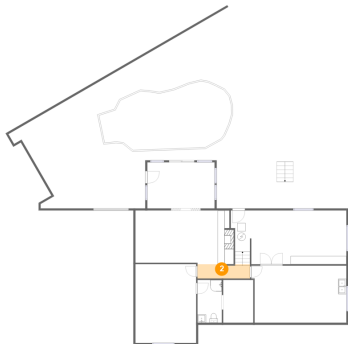
1 Floor 1 - Recreation Room



Dimensions: 23'11" x 13'1"
Area: 303 sq. ft
Counted as living area: Yes

Heated: Yes
Finished: Yes
Enclosed: Yes
Contiguous: Yes
Permitted: Yes
Wet space: No
Addition: No
Conversion: No

2 Floor 1 - Hall

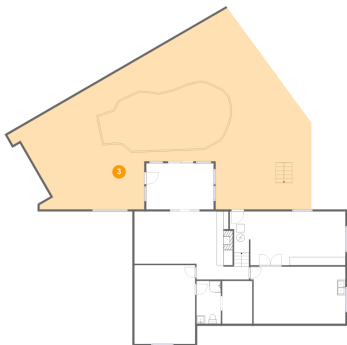


Dimensions: 12'9" x 3'5"
Area: 44 sq. ft
Counted as living area: Yes

Heated: Yes
Finished: Yes
Enclosed: Yes
Contiguous: Yes
Permitted: Yes
Wet space: No
Addition: No
Conversion: No

4814 Westhill Drive, Sugar Loaf Farms, Cave Spring, Roanoke,
Roanoke County, Virginia, United States, 24018

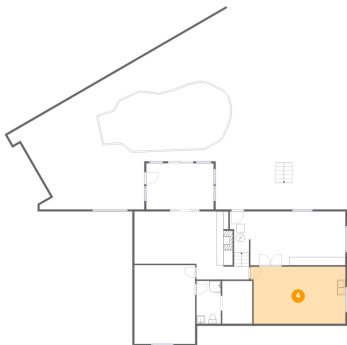
3 Floor 1 - Patio



Dimensions: 74'1" x 49'0"
Area: 2190 sq. ft
Counted as living area: No

Heated: No
Finished: Yes
Enclosed: No
Contiguous: Yes
Permitted: Yes
Wet space: No
Addition: No
Conversion: No

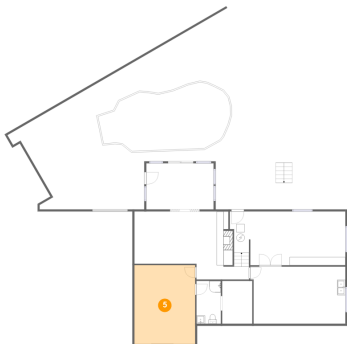
4 Floor 1 - Storage



Dimensions: 23'2" x 13'11"
Area: 313 sq. ft
Counted as living area: No

Heated: No
Finished: No
Enclosed: No
Contiguous: Yes
Permitted: Yes
Wet space: No
Addition: No
Conversion: No

5 Floor 1 - Bedroom

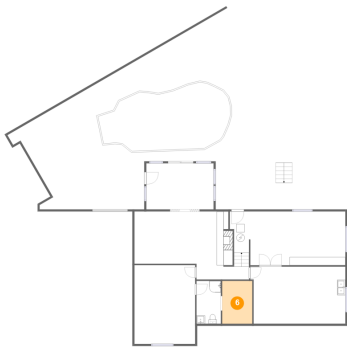


Dimensions: 14'10" x 19'2"
Area: 284 sq. ft
Counted as living area: Yes

Heated: Yes
Finished: Yes
Enclosed: Yes
Contiguous: Yes
Permitted: Yes
Wet space: No
Addition: No
Conversion: No

4814 Westhill Drive, Sugar Loaf Farms, Cave Spring, Roanoke,
Roanoke County, Virginia, United States, 24018

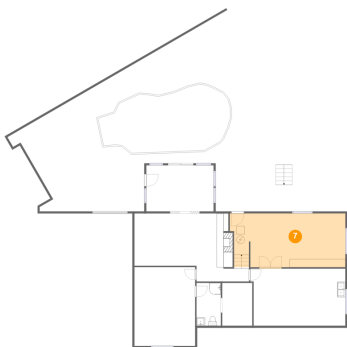
6 Floor 1 - W.I.C.



Dimensions: 7'4" x 10'5"
Area: 76 sq. ft
Counted as living area: Yes

Heated: Yes
Finished: Yes
Enclosed: Yes
Contiguous: Yes
Permitted: Yes
Wet space: No
Addition: No
Conversion: No

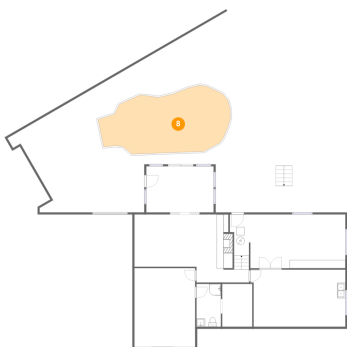
7 Floor 1 - Utility



Dimensions: 28'2" x 13'5"
Area: 359 sq. ft
Counted as living area: No

Heated: Yes
Finished: No
Enclosed: Yes
Contiguous: Yes
Permitted: Yes
Wet space: No
Addition: No
Conversion: No

8 Floor 1 - Swimming Pool

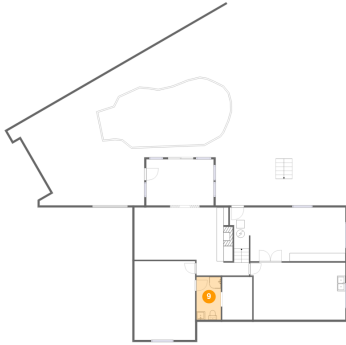


Dimensions: 32'2" x 13'11"
Area: 403 sq. ft
Counted as living area: No

Heated: No
Finished: No
Enclosed: No
Contiguous: Yes
Permitted: No
Wet space: No
Addition: No
Conversion: No

4814 Westhill Drive, Sugar Loaf Farms, Cave Spring, Roanoke,
Roanoke County, Virginia, United States, 24018

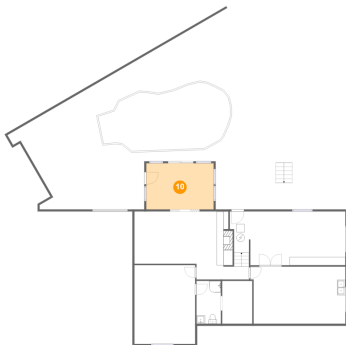
9 Floor 1 - Bath



Dimensions: 5'11" x 10'5"
Area: 62 sq. ft
Counted as living area: Yes

Heated: Yes
Finished: Yes
Enclosed: Yes
Contiguous: Yes
Permitted: Yes
Wet space: Yes
Addition: No
Conversion: No

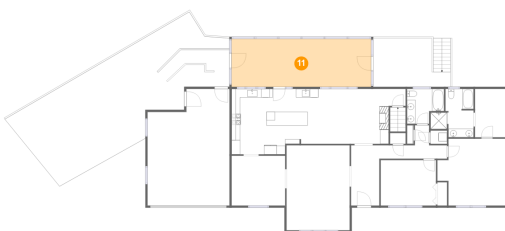
10 Floor 1 - Screened Porch



Dimensions: 16'5" x 11'3"
Area: 184 sq. ft
Counted as living area: No

Heated: No
Finished: Yes
Enclosed: No
Contiguous: Yes
Permitted: Yes
Wet space: No
Addition: No
Conversion: No

11 Floor 2 - Screened Porch



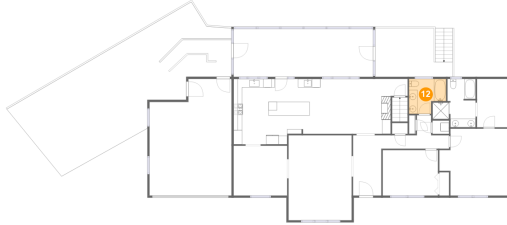
Dimensions: 32'8" x 11'3"
Area: 367 sq. ft
Counted as living area: No

Heated: No
Finished: Yes
Enclosed: No
Contiguous: Yes
Permitted: Yes
Wet space: No
Addition: No
Conversion: No

Home report

4814 Westhill Drive, Sugar Loaf Farms, Cave Spring, Roanoke,
Roanoke County, Virginia, United States, 24018

12 Floor 2 - Bath



Dimensions: 8'8" x 8'2"
Area: 60 sq. ft
Counted as living area: Yes

Heated: Yes
Finished: Yes
Enclosed: Yes
Contiguous: Yes
Permitted: Yes
Wet space: Yes
Addition: No
Conversion: No

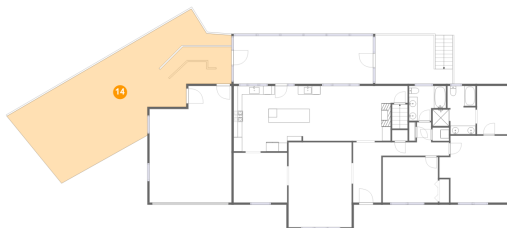
13 Floor 2 - Foyer



Dimensions: 6'7" x 14'2"
Area: 94 sq. ft
Counted as living area: Yes

Heated: Yes
Finished: Yes
Enclosed: Yes
Contiguous: Yes
Permitted: Yes
Wet space: No
Addition: No
Conversion: No

14 Floor 2 - Carport

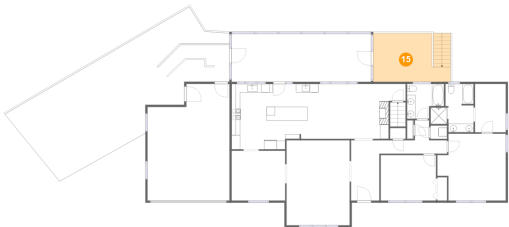


Dimensions: 53'2" x 20'2"
Area: 934 sq. ft
Counted as living area: No

Heated: No
Finished: Yes
Enclosed: No
Contiguous: No
Permitted: Yes
Wet space: No
Addition: No
Conversion: No

4814 Westhill Drive, Sugar Loaf Farms, Cave Spring, Roanoke,
Roanoke County, Virginia, United States, 24018

15 Floor 2 - Deck



Dimensions: 18'2" x 11'5"
Area: 204 sq. ft
Counted as living area: No

Heated: No
Finished: Yes
Enclosed: No
Contiguous: Yes
Permitted: Yes
Wet space: No
Addition: No
Conversion: No

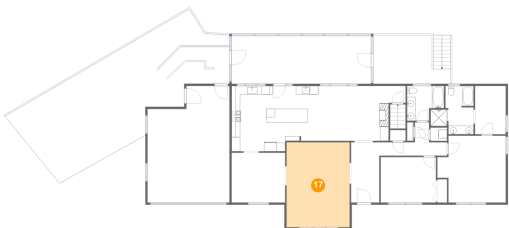
16 Floor 2 - Porch



Dimensions: 36'3" x 5'5"
Area: 197 sq. ft
Counted as living area: No

Heated: No
Finished: Yes
Enclosed: No
Contiguous: Yes
Permitted: Yes
Wet space: No
Addition: No
Conversion: No

17 Floor 2 - Living Room

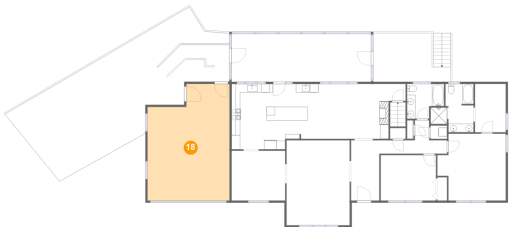


Dimensions: 14'10" x 19'11"
Area: 295 sq. ft
Counted as living area: Yes

Heated: Yes
Finished: Yes
Enclosed: Yes
Contiguous: Yes
Permitted: Yes
Wet space: No
Addition: No
Conversion: No

4814 Westhill Drive, Sugar Loaf Farms, Cave Spring, Roanoke,
Roanoke County, Virginia, United States, 24018

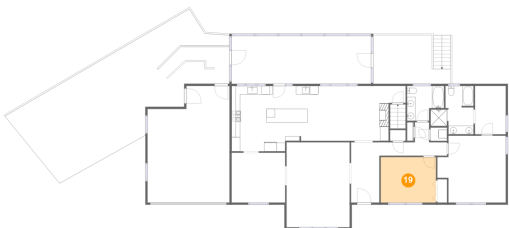
18 Floor 2 - Garage



Dimensions: 19'3" x 27'4"
Area: 476 sq. ft
Counted as living area: No

Heated: No
Finished: No
Enclosed: Yes
Contiguous: Yes
Permitted: Yes
Wet space: No
Addition: No
Conversion: No

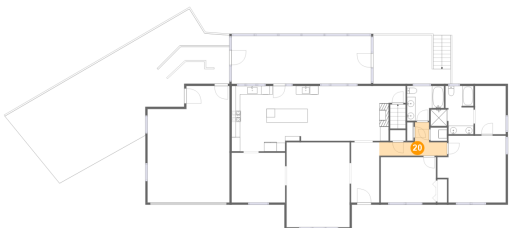
19 Floor 2 - Bedroom



Dimensions: 12'11" x 10'8"
Area: 138 sq. ft
Counted as living area: Yes

Heated: Yes
Finished: Yes
Enclosed: Yes
Contiguous: Yes
Permitted: Yes
Wet space: No
Addition: No
Conversion: No

20 Floor 2 - Hall

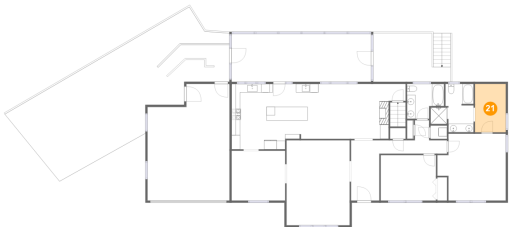


Dimensions: 15'11" x 7'10"
Area: 66 sq. ft
Counted as living area: Yes

Heated: Yes
Finished: Yes
Enclosed: Yes
Contiguous: Yes
Permitted: Yes
Wet space: No
Addition: No
Conversion: No

4814 Westhill Drive, Sugar Loaf Farms, Cave Spring, Roanoke,
Roanoke County, Virginia, United States, 24018

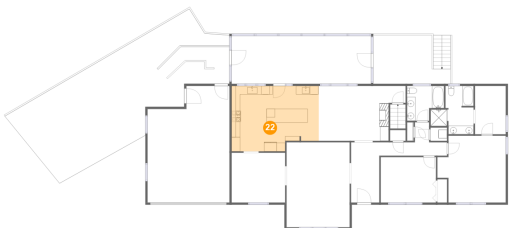
21 Floor 2 - W.I.C.



Dimensions: 7'3" x 11'4"
Area: 82 sq. ft
Counted as living area: Yes

Heated: Yes
Finished: Yes
Enclosed: Yes
Contiguous: Yes
Permitted: Yes
Wet space: No
Addition: No
Conversion: No

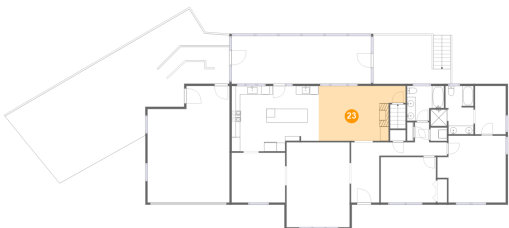
22 Floor 2 - Kitchen



Dimensions: 20'5" x 15'4"
Area: 293 sq. ft
Counted as living area: Yes

Heated: Yes
Finished: Yes
Enclosed: Yes
Contiguous: Yes
Permitted: Yes
Wet space: No
Addition: No
Conversion: No

23 Floor 2 - Family Room

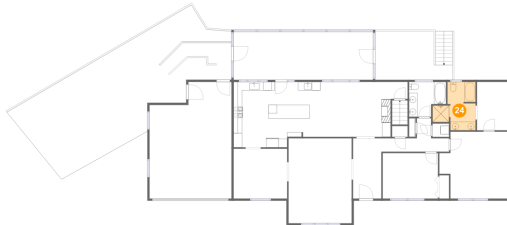


Dimensions: 20'4" x 12'10"
Area: 227 sq. ft
Counted as living area: Yes

Heated: Yes
Finished: Yes
Enclosed: Yes
Contiguous: Yes
Permitted: Yes
Wet space: No
Addition: No
Conversion: No

4814 Westhill Drive, Sugar Loaf Farms, Cave Spring, Roanoke,
Roanoke County, Virginia, United States, 24018

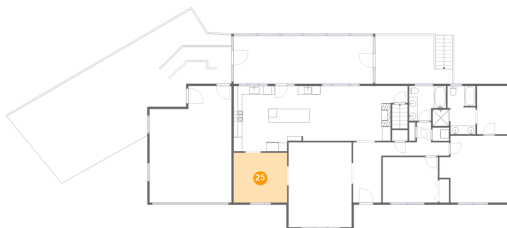
24 Floor 2 - Primary Bath



Dimensions: 10'1" x 11'4"
Area: 85 sq. ft
Counted as living area: Yes

Heated: Yes
Finished: Yes
Enclosed: Yes
Contiguous: Yes
Permitted: Yes
Wet space: Yes
Addition: No
Conversion: No

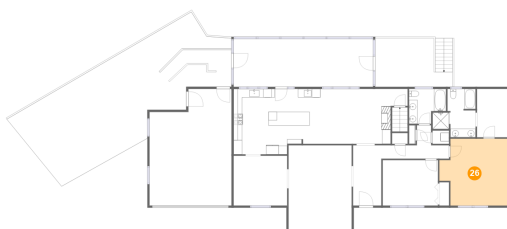
25 Floor 2 - Dining Room



Dimensions: 12'7" x 11'8"
Area: 147 sq. ft
Counted as living area: Yes

Heated: Yes
Finished: Yes
Enclosed: Yes
Contiguous: Yes
Permitted: Yes
Wet space: No
Addition: No
Conversion: No

26 Floor 2 - Primary Bedroom



Dimensions: 16'0" x 15'8"
Area: 223 sq. ft
Counted as living area: Yes

Heated: Yes
Finished: Yes
Enclosed: Yes
Contiguous: Yes
Permitted: Yes
Wet space: No
Addition: No
Conversion: No