


50960 Redwood Road, South Bend, St. Joseph County, Indiana, United States, 46628



Property summary


 **1** Garages

 **5** Bedrooms

 **4** Bathrooms

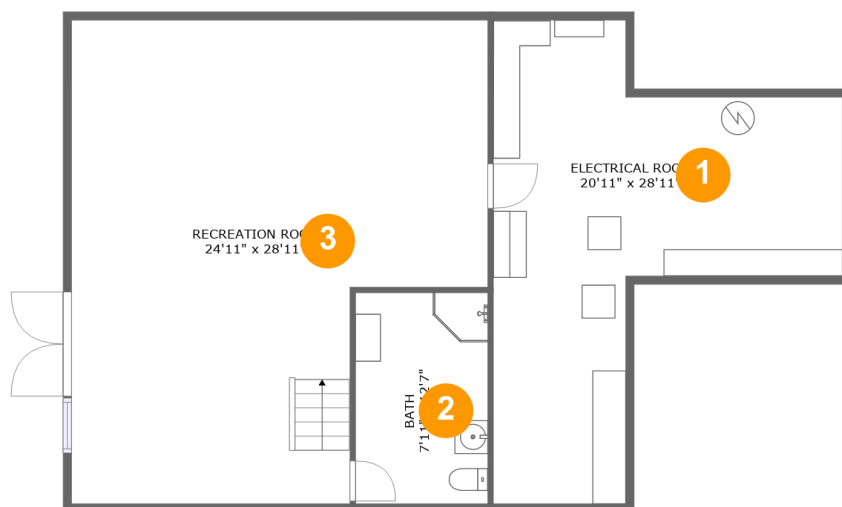
 **1** Half baths

 **4** Floors

 **4,252** Gross living area sqft

 **5,754** Total sqft

50960 Redwood Road, South Bend, St. Joseph County, Indiana, United States, 46628



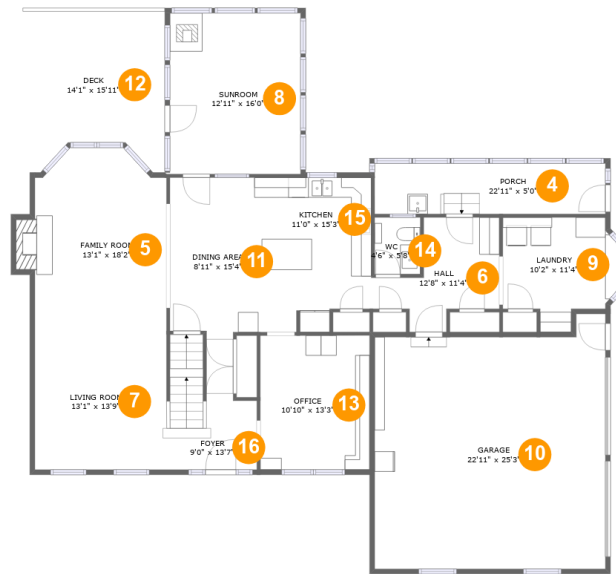
Room dimensions

Floor 1

Total sqft: 1175 Living area: 663

#		Dimensions	sqft	Counted as living area
1	Electrical Room	20'11" x 28'11"	368 sq. ft	No
2	Bath	7'11" x 12'7"	100 sq. ft	No
3	Recreation Room	24'11" x 28'11"	614 sq. ft	Yes

50960 Redwood Road, South Bend, St. Joseph County, Indiana, United States, 46628



Room dimensions

Floor 2

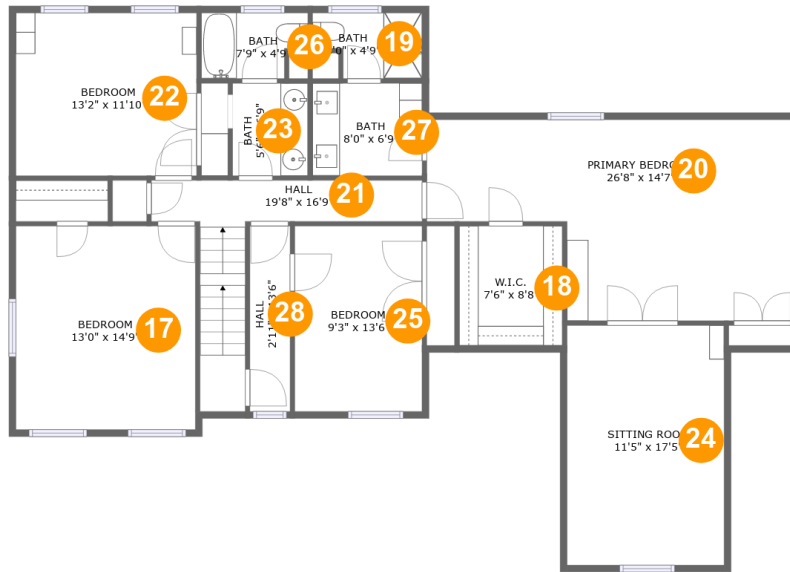
Total sqft: 2454 Living area: 1566

#		Dimensions	sqft	Counted as living area
4	Porch	22'11" x 5'0"	115 sq. ft	No
5	Family Room	13'1" x 18'2"	231 sq. ft	Yes
6	Hall	12'8" x 11'4"	92 sq. ft	Yes
7	Living Room	13'1" x 13'9"	179 sq. ft	Yes
8	Sunroom	12'11" x 16'0"	207 sq. ft	Yes
9	Laundry	10'2" x 11'4"	108 sq. ft	Yes
10	Garage	22'11" x 25'3"	532 sq. ft	No
11	Dining Area	8'11" x 15'4"	137 sq. ft	Yes
12	Deck	14'1" x 15'11"	200 sq. ft	No
13	Office	10'10" x 13'3"	144 sq. ft	Yes
14	WC	4'6" x 5'8"	26 sq. ft	Yes

50960 Redwood Road, South Bend, St. Joseph County, Indiana, United States, 46628

#		Dimensions	sqft	Counted as living area
15	Kitchen	11'0" x 15'3"	159 sq. ft	Yes
16	Foyer	9'0" x 13'7"	101 sq. ft	Yes

50960 Redwood Road, South Bend, St. Joseph County, Indiana, United States, 46628



Room dimensions

Floor 3

Total sqft: 1601

Living area: 1544

#		Dimensions	sqft	Counted as living area
17	Bedroom	13'0" x 14'9"	193 sq. ft	Yes
18	W.I.C.	7'6" x 8'8"	65 sq. ft	Yes
19	Bath	8'0" x 4'9"	33 sq. ft	Yes
20	Primary Bedroom	26'8" x 14'7"	316 sq. ft	Yes
21	Hall	19'8" x 16'9"	104 sq. ft	Yes
22	Bedroom	13'2" x 11'10"	155 sq. ft	Yes
23	Bath	5'6" x 6'9"	37 sq. ft	Yes
24	Sitting Room	11'5" x 17'5"	158 sq. ft	Yes
25	Bedroom	9'3" x 13'6"	125 sq. ft	Yes
26	Bath	7'9" x 4'9"	33 sq. ft	Yes
27	Bath	8'0" x 6'9"	54 sq. ft	Yes

50960 Redwood Road, South Bend, St. Joseph County, Indiana, United States, 46628

#		Dimensions	sqft	Counted as living area
28	Hall	2'11" x 13'6"	39 sq. ft	Yes

50960 Redwood Road, South Bend, St. Joseph County, Indiana, United States, 46628



Room dimensions

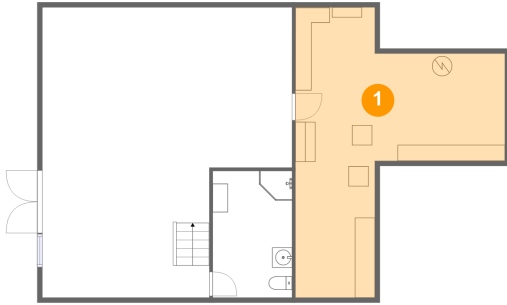
Floor 4

Total sqft: 524 Living area: 479

#		Dimensions	sqft	Counted as living area
29	CL	12'4" x 6'10"	54 sq. ft	Yes
30	Bedroom	17'9" x 22'6"	267 sq. ft	Yes
31	Bath	11'3" x 9'10"	106 sq. ft	Yes

50960 Redwood Road, South Bend, St. Joseph County, Indiana, United States, 46628

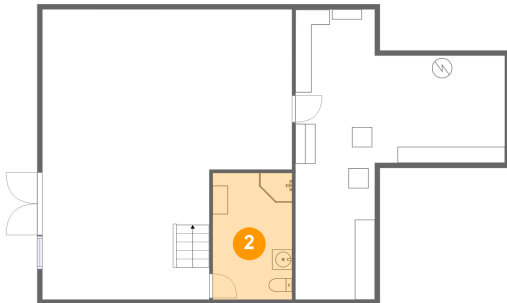
1 Floor 1 - Electrical Room



Dimensions: 20'11" x 28'11"
Area: 368 sq. ft
Counted as living area: No

Heated: No
Finished: No
Enclosed: Yes
Contiguous: Yes
Permitted: Yes
Wet space: No
Addition: No
Conversion: No

2 Floor 1 - Bath

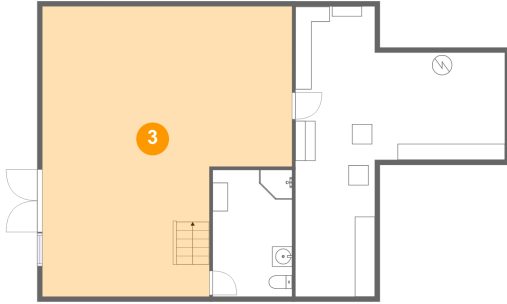


Dimensions: 7'11" x 12'7"
Area: 100 sq. ft
Counted as living area: No

Heated: Yes
Finished: Yes
Enclosed: Yes
Contiguous: No
Permitted: Yes
Wet space: Yes
Addition: No
Conversion: No

50960 Redwood Road, South Bend, St. Joseph County, Indiana, United States, 46628

3 Floor 1 - Recreation Room



Dimensions: 24'11" x 28'11"
Area: 614 sq. ft
Counted as living area: Yes

Heated: Yes
Finished: Yes
Enclosed: Yes
Contiguous: Yes
Permitted: Yes
Wet space: No
Addition: No
Conversion: No

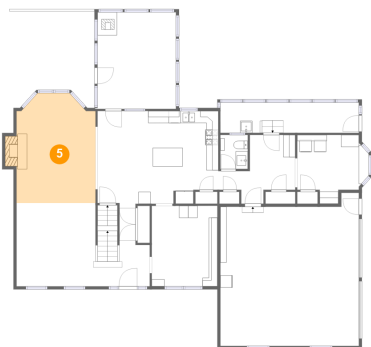
4 Floor 2 - Porch



Dimensions: 22'11" x 5'0"
Area: 115 sq. ft
Counted as living area: No

Heated: No
Finished: Yes
Enclosed: No
Contiguous: No
Permitted: Yes
Wet space: No
Addition: No
Conversion: No

5 Floor 2 - Family Room

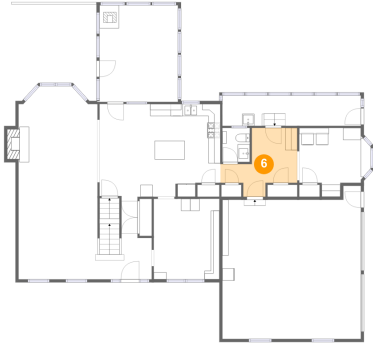


Dimensions: 13'1" x 18'2"
Area: 231 sq. ft
Counted as living area: Yes

Heated: Yes
Finished: Yes
Enclosed: Yes
Contiguous: Yes
Permitted: Yes
Wet space: No
Addition: No
Conversion: No

50960 Redwood Road, South Bend, St. Joseph County, Indiana, United States, 46628

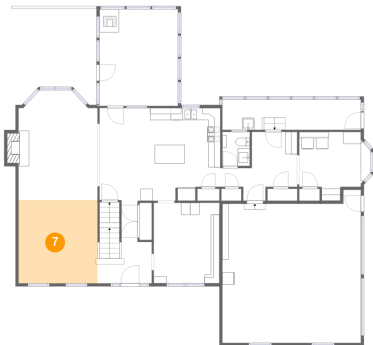
6 Floor 2 - Hall



Dimensions: 12'8" x 11'4"
Area: 92 sq. ft
Counted as living area: Yes

Heated: Yes
Finished: Yes
Enclosed: Yes
Contiguous: Yes
Permitted: Yes
Wet space: No
Addition: No
Conversion: No

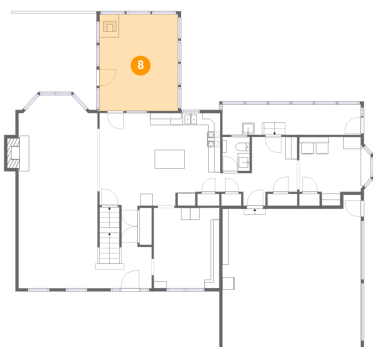
7 Floor 2 - Living Room



Dimensions: 13'1" x 13'9"
Area: 179 sq. ft
Counted as living area: Yes

Heated: Yes
Finished: Yes
Enclosed: Yes
Contiguous: Yes
Permitted: Yes
Wet space: No
Addition: No
Conversion: No

8 Floor 2 - Sunroom

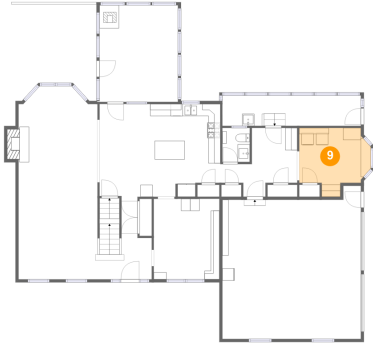


Dimensions: 12'11" x 16'0"
Area: 207 sq. ft
Counted as living area: Yes

Heated: Yes
Finished: Yes
Enclosed: Yes
Contiguous: Yes
Permitted: Yes
Wet space: No
Addition: No
Conversion: No

50960 Redwood Road, South Bend, St. Joseph County, Indiana, United States, 46628

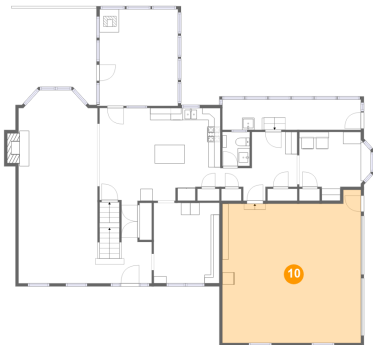
9 Floor 2 - Laundry



Dimensions: 10'2" x 11'4"
Area: 108 sq. ft
Counted as living area: Yes

Heated: Yes
Finished: Yes
Enclosed: Yes
Contiguous: Yes
Permitted: Yes
Wet space: No
Addition: No
Conversion: No

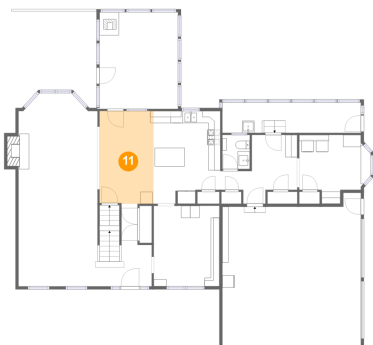
10 Floor 2 - Garage



Dimensions: 22'11" x 25'3"
Area: 532 sq. ft
Counted as living area: No

Heated: No
Finished: No
Enclosed: Yes
Contiguous: Yes
Permitted: Yes
Wet space: No
Addition: No
Conversion: No

11 Floor 2 - Dining Area

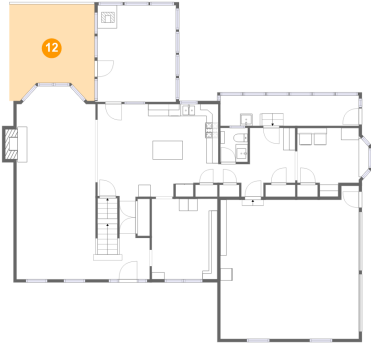


Dimensions: 8'11" x 15'4"
Area: 137 sq. ft
Counted as living area: Yes

Heated: Yes
Finished: Yes
Enclosed: Yes
Contiguous: Yes
Permitted: Yes
Wet space: No
Addition: No
Conversion: No

**50960 Redwood Road, South Bend, St. Joseph
County, Indiana, United States, 46628**

12 Floor 2 - Deck



Dimensions: 14'1" x 15'11"
Area: 200 sq. ft
Counted as living area: No

Heated: No
Finished: Yes
Enclosed: No
Contiguous: Yes
Permitted: Yes
Wet space: No
Addition: No
Conversion: No

13 Floor 2 - Office



Dimensions: 10'10" x 13'3"
Area: 144 sq. ft
Counted as living area: Yes

Heated: Yes
Finished: Yes
Enclosed: Yes
Contiguous: Yes
Permitted: Yes
Wet space: No
Addition: No
Conversion: No

14 Floor 2 - WC

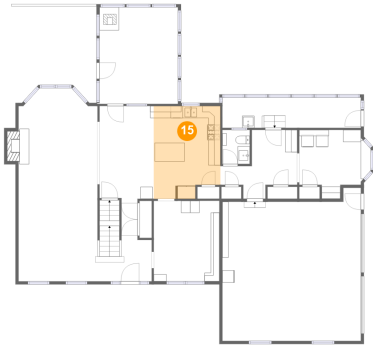


Dimensions: 4'6" x 5'8"
Area: 26 sq. ft
Counted as living area: Yes

Heated: Yes
Finished: Yes
Enclosed: Yes
Contiguous: Yes
Permitted: Yes
Wet space: Yes
Addition: No
Conversion: No

50960 Redwood Road, South Bend, St. Joseph
County, Indiana, United States, 46628

15 Floor 2 - Kitchen



Dimensions: 11'0" x 15'3"
Area: 159 sq. ft
Counted as living area: Yes

Heated: Yes
Finished: Yes
Enclosed: Yes
Contiguous: Yes
Permitted: Yes
Wet space: No
Addition: No
Conversion: No

16 Floor 2 - Foyer



Dimensions: 9'0" x 13'7"
Area: 101 sq. ft
Counted as living area: Yes

Heated: Yes
Finished: Yes
Enclosed: Yes
Contiguous: Yes
Permitted: Yes
Wet space: No
Addition: No
Conversion: No

17 Floor 3 - Bedroom

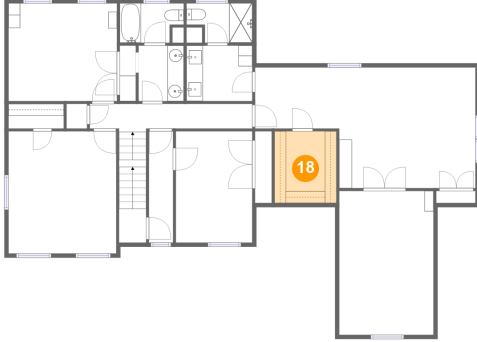


Dimensions: 13'0" x 14'9"
Area: 193 sq. ft
Counted as living area: Yes

Heated: Yes
Finished: Yes
Enclosed: Yes
Contiguous: Yes
Permitted: Yes
Wet space: No
Addition: No
Conversion: No

50960 Redwood Road, South Bend, St. Joseph County, Indiana, United States, 46628

18 Floor 3 - W.I.C.



Dimensions: 7'6" x 8'8"
Area: 65 sq. ft
Counted as living area: Yes

Heated: Yes
Finished: Yes
Enclosed: Yes
Contiguous: Yes
Permitted: Yes
Wet space: No
Addition: No
Conversion: No

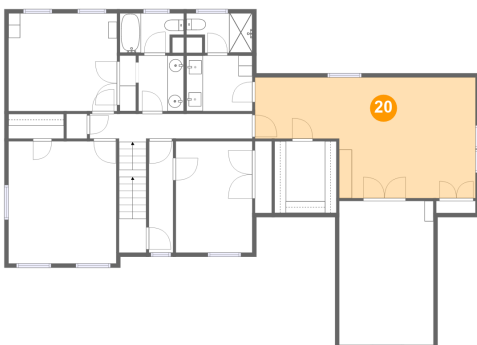
19 Floor 3 - Bath



Dimensions: 8'0" x 4'9"
Area: 33 sq. ft
Counted as living area: Yes

Heated: Yes
Finished: Yes
Enclosed: Yes
Contiguous: Yes
Permitted: Yes
Wet space: Yes
Addition: No
Conversion: No

20 Floor 3 - Primary Bedroom

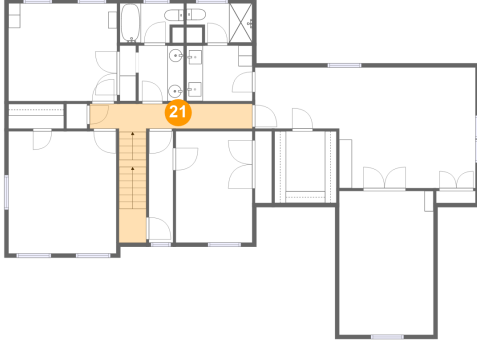


Dimensions: 26'8" x 14'7"
Area: 316 sq. ft
Counted as living area: Yes

Heated: Yes
Finished: Yes
Enclosed: Yes
Contiguous: Yes
Permitted: Yes
Wet space: No
Addition: No
Conversion: No

50960 Redwood Road, South Bend, St. Joseph County, Indiana, United States, 46628

21 Floor 3 - Hall



Dimensions: 19'8" x 16'9"
Area: 104 sq. ft
Counted as living area: Yes

Heated: Yes
Finished: Yes
Enclosed: Yes
Contiguous: Yes
Permitted: Yes
Wet space: No
Addition: No
Conversion: No

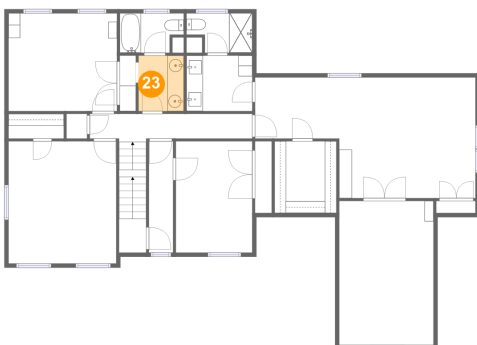
22 Floor 3 - Bedroom



Dimensions: 13'2" x 11'10"
Area: 155 sq. ft
Counted as living area: Yes

Heated: Yes
Finished: Yes
Enclosed: Yes
Contiguous: Yes
Permitted: Yes
Wet space: No
Addition: No
Conversion: No

23 Floor 3 - Bath

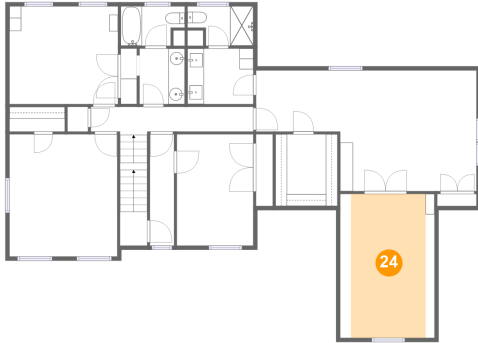


Dimensions: 5'6" x 6'9"
Area: 37 sq. ft
Counted as living area: Yes

Heated: Yes
Finished: Yes
Enclosed: Yes
Contiguous: Yes
Permitted: Yes
Wet space: Yes
Addition: No
Conversion: No

50960 Redwood Road, South Bend, St. Joseph County, Indiana, United States, 46628

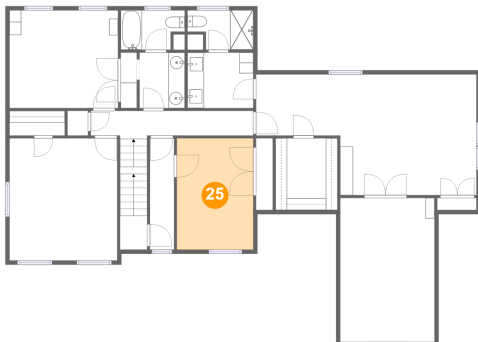
24 Floor 3 - Sitting Room



Dimensions: 11'5" x 17'5"
Area: 158 sq. ft
Counted as living area: Yes

Heated: Yes
Finished: Yes
Enclosed: Yes
Contiguous: Yes
Permitted: Yes
Wet space: No
Addition: No
Conversion: No

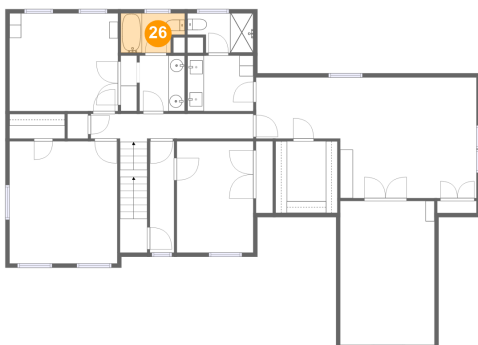
25 Floor 3 - Bedroom



Dimensions: 9'3" x 13'6"
Area: 125 sq. ft
Counted as living area: Yes

Heated: Yes
Finished: Yes
Enclosed: Yes
Contiguous: Yes
Permitted: Yes
Wet space: No
Addition: No
Conversion: No

26 Floor 3 - Bath

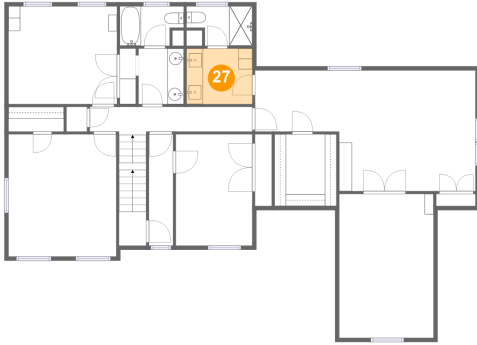


Dimensions: 7'9" x 4'9"
Area: 33 sq. ft
Counted as living area: Yes

Heated: Yes
Finished: Yes
Enclosed: Yes
Contiguous: Yes
Permitted: Yes
Wet space: Yes
Addition: No
Conversion: No

50960 Redwood Road, South Bend, St. Joseph County, Indiana, United States, 46628

27 Floor 3 - Bath



Dimensions: 8'0" x 6'9"
Area: 54 sq. ft
Counted as living area: Yes

Heated: Yes
Finished: Yes
Enclosed: Yes
Contiguous: Yes
Permitted: Yes
Wet space: Yes
Addition: No
Conversion: No

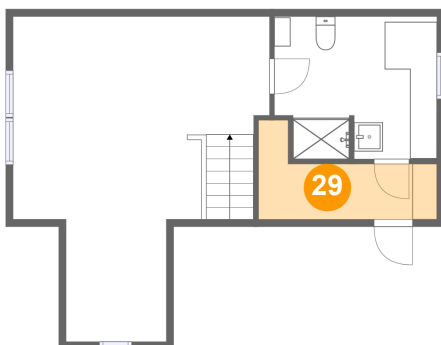
28 Floor 3 - Hall



Dimensions: 2'11" x 13'6"
Area: 39 sq. ft
Counted as living area: Yes

Heated: Yes
Finished: Yes
Enclosed: Yes
Contiguous: Yes
Permitted: Yes
Wet space: No
Addition: No
Conversion: No

29 Floor 4 - Cl

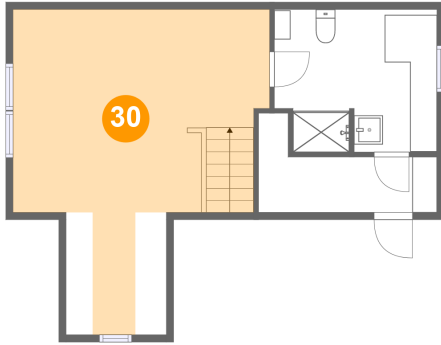


Dimensions: 12'4" x 6'10"
Area: 54 sq. ft
Counted as living area: Yes

Heated: Yes
Finished: Yes
Enclosed: Yes
Contiguous: Yes
Permitted: Yes
Wet space: No
Addition: No
Conversion: No

50960 Redwood Road, South Bend, St. Joseph
County, Indiana, United States, 46628

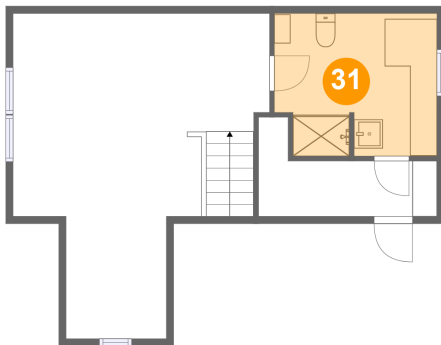
30 Floor 4 - Bedroom



Dimensions: 17'9" x 22'6"
Area: 267 sq. ft
Counted as living area: Yes

Heated: Yes
Finished: Yes
Enclosed: Yes
Contiguous: Yes
Permitted: Yes
Wet space: No
Addition: No
Conversion: No

31 Floor 4 - Bath



Dimensions: 11'3" x 9'10"
Area: 106 sq. ft
Counted as living area: Yes

Heated: Yes
Finished: Yes
Enclosed: Yes
Contiguous: Yes
Permitted: Yes
Wet space: Yes
Addition: No
Conversion: No