



Home report


2633 N 78th Ct,Elmwood Park,IL,US




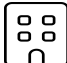
Property summary


**0** Garages


**7** Bedrooms

**3** Bathrooms

**0** Half baths

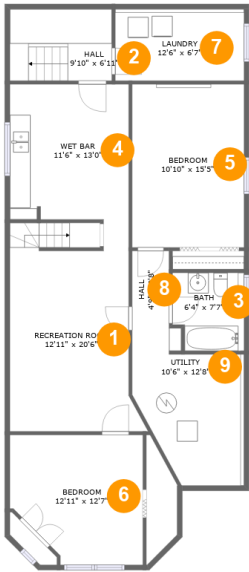
**3** Floors

**2,847** Gross living area sqft

**3,240** Total sqft

Home report

2633 N 78th Ct,Elmwood Park,IL,US



Room dimensions

Floor 1 Total sqft: 1240    Living area: 1015

#		Dimensions	sqft	Counted as living area
1	Recreation Room	12'11" x 20'6"	234 sq. ft	Yes
2	Hall	9'10" x 6'11"	69 sq. ft	Yes
3	Bath	6'4" x 7'7"	49 sq. ft	Yes
4	Wet Bar	11'6" x 13'0"	150 sq. ft	Yes
5	Bedroom	10'10" x 15'5"	172 sq. ft	Yes
6	Bedroom	12'11" x 12'7"	146 sq. ft	Yes
7	Laundry	12'6" x 6'7"	87 sq. ft	No
8	Hall	4'9" x 9'8"	37 sq. ft	Yes
9	Utility	10'6" x 12'8"	118 sq. ft	No

Home report

2633 N 78th Ct,Elmwood Park,IL,US



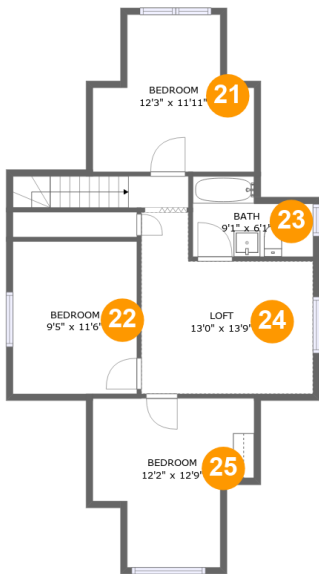
Room dimensions

Floor 2 Total sqft: 1319 Living area: 1239

#		Dimensions	sqft	Counted as living area
10	Room	16'9" x 6'11"	116 sq. ft	Yes
11	Bedroom	9'8" x 10'3"	99 sq. ft	Yes
12	Primary Bedroom	10'2" x 12'9"	123 sq. ft	Yes
13	Entry	1'9" x 6'11"	32 sq. ft	Yes
14	Dining Area	12'3" x 13'11"	192 sq. ft	Yes
15	Foyer	6'2" x 3'11"	25 sq. ft	Yes
16	Hall	6'11" x 7'7"	41 sq. ft	Yes
17	Deck	15'5" x 5'9"	80 sq. ft	No
18	Living Room	16'3" x 16'6"	260 sq. ft	Yes
19	Eat-in Kitchen	12'8" x 13'1"	161 sq. ft	Yes
20	Bath	6'5" x 7'7"	45 sq. ft	Yes

Home report

2633 N 78th Ct,Elmwood Park,IL,US



Room dimensions

Floor 3 Total sqft: 681    Living area: 593

#		Dimensions	sqft	Counted as living area
21	Bedroom	12'3" x 11'11"	84 sq. ft	Yes
22	Bedroom	9'5" x 11'6"	108 sq. ft	Yes
23	Bath	9'1" x 6'1"	46 sq. ft	Yes
24	Loft	13'0" x 13'9"	144 sq. ft	Yes
25	Bedroom	12'2" x 12'9"	90 sq. ft	Yes

1 Floor 1 - Recreation Room



Dimensions: 12'11" x 20'6"  
Area: 234 sq. ft  
Counted as living area: Yes

Heated: Yes  
Finished: Yes  
Enclosed: Yes  
Contiguous: Yes  
Permitted: Yes  
Wet space: No  
Addition: No  
Conversion: No

2 Floor 1 - Hall



Dimensions: 9'10" x 6'11"  
Area: 69 sq. ft  
Counted as living area: Yes

Heated: Yes  
Finished: Yes  
Enclosed: Yes  
Contiguous: Yes  
Permitted: Yes  
Wet space: No  
Addition: No  
Conversion: No

3 Floor 1 - Bath



Dimensions: 6'4" x 7'7"  
Area: 49 sq. ft  
Counted as living area: Yes

Heated: Yes  
Finished: Yes  
Enclosed: Yes  
Contiguous: Yes  
Permitted: Yes  
Wet space: Yes  
Addition: No  
Conversion: No

4 Floor 1 - Wet Bar



Dimensions: 11'6" x 13'0"  
Area: 150 sq. ft  
Counted as living area: Yes

Heated: Yes  
Finished: Yes  
Enclosed: Yes  
Contiguous: Yes  
Permitted: Yes  
Wet space: No  
Addition: No  
Conversion: No

5 Floor 1 - Bedroom



Dimensions: 10'10" x 15'5"  
Area: 172 sq. ft  
Counted as living area: Yes

Heated: Yes  
Finished: Yes  
Enclosed: Yes  
Contiguous: Yes  
Permitted: Yes  
Wet space: No  
Addition: No  
Conversion: No

## 6 Floor 1 - Bedroom



Dimensions: 12'11" x 12'7"  
Area: 146 sq. ft  
Counted as living area: Yes

Heated: Yes  
Finished: Yes  
Enclosed: Yes  
Contiguous: Yes  
Permitted: Yes  
Wet space: No  
Addition: No  
Conversion: No

## 7 Floor 1 - Laundry



Dimensions: 12'6" x 6'7"  
Area: 87 sq. ft  
Counted as living area: No

Heated: Yes  
Finished: No  
Enclosed: Yes  
Contiguous: Yes  
Permitted: Yes  
Wet space: No  
Addition: No  
Conversion: No

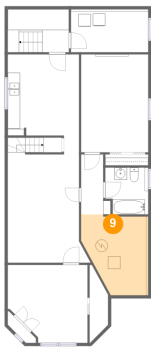
## 8 Floor 1 - Hall



Dimensions: 4'9" x 9'8"  
Area: 37 sq. ft  
Counted as living area: Yes

Heated: Yes  
Finished: Yes  
Enclosed: Yes  
Contiguous: Yes  
Permitted: Yes  
Wet space: No  
Addition: No  
Conversion: No

9 Floor 1 - Utility



Dimensions: 10'6" x 12'8"  
Area: 118 sq. ft  
Counted as living area: No

Heated: Yes  
Finished: No  
Enclosed: Yes  
Contiguous: Yes  
Permitted: Yes  
Wet space: No  
Addition: No  
Conversion: No

10 Floor 2 - Room



Dimensions: 16'9" x 6'11"  
Area: 116 sq. ft  
Counted as living area: Yes

Heated: Yes  
Finished: Yes  
Enclosed: Yes  
Contiguous: Yes  
Permitted: Yes  
Wet space: No  
Addition: No  
Conversion: No

11 Floor 2 - Bedroom



Dimensions: 9'8" x 10'3"  
Area: 99 sq. ft  
Counted as living area: Yes

Heated: Yes  
Finished: Yes  
Enclosed: Yes  
Contiguous: Yes  
Permitted: Yes  
Wet space: No  
Addition: No  
Conversion: No



12 Floor 2 - Primary Bedroom



Dimensions: 10'2" x 12'9"  
Area: 123 sq. ft  
Counted as living area: Yes

Heated: Yes  
Finished: Yes  
Enclosed: Yes  
Contiguous: Yes  
Permitted: Yes  
Wet space: No  
Addition: No  
Conversion: No

13 Floor 2 - Entry



Dimensions: 1'9" x 6'11"  
Area: 32 sq. ft  
Counted as living area: Yes

Heated: Yes  
Finished: Yes  
Enclosed: Yes  
Contiguous: Yes  
Permitted: Yes  
Wet space: No  
Addition: No  
Conversion: No

14 Floor 2 - Dining Area



Dimensions: 12'3" x 13'11"  
Area: 192 sq. ft  
Counted as living area: Yes

Heated: Yes  
Finished: Yes  
Enclosed: Yes  
Contiguous: Yes  
Permitted: Yes  
Wet space: No  
Addition: No  
Conversion: No

15 Floor 2 - Foyer



Dimensions: 6'2" x 3'11"  
Area: 25 sq. ft  
Counted as living area: Yes

Heated: Yes  
Finished: Yes  
Enclosed: Yes  
Contiguous: Yes  
Permitted: Yes  
Wet space: No  
Addition: No  
Conversion: No

16 Floor 2 - Hall



Dimensions: 6'11" x 7'7"  
Area: 41 sq. ft  
Counted as living area: Yes

Heated: Yes  
Finished: Yes  
Enclosed: Yes  
Contiguous: Yes  
Permitted: Yes  
Wet space: No  
Addition: No  
Conversion: No

17 Floor 2 - Deck



Dimensions: 15'5" x 5'9"  
Area: 80 sq. ft  
Counted as living area: No

Heated: No  
Finished: Yes  
Enclosed: No  
Contiguous: Yes  
Permitted: Yes  
Wet space: No  
Addition: No  
Conversion: No

18 Floor 2 - Living Room



Dimensions: 16'3" x 16'6"  
Area: 260 sq. ft  
Counted as living area: Yes

Heated: Yes  
Finished: Yes  
Enclosed: Yes  
Contiguous: Yes  
Permitted: Yes  
Wet space: No  
Addition: No  
Conversion: No

19 Floor 2 - Eat-in Kitchen



Dimensions: 12'8" x 13'1"  
Area: 161 sq. ft  
Counted as living area: Yes

Heated: Yes  
Finished: Yes  
Enclosed: Yes  
Contiguous: Yes  
Permitted: Yes  
Wet space: No  
Addition: No  
Conversion: No

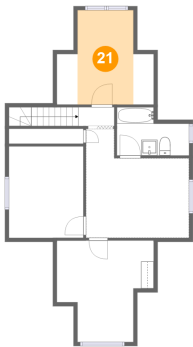
20 Floor 2 - Bath



Dimensions: 6'5" x 7'7"  
Area: 45 sq. ft  
Counted as living area: Yes

Heated: Yes  
Finished: Yes  
Enclosed: Yes  
Contiguous: Yes  
Permitted: Yes  
Wet space: Yes  
Addition: No  
Conversion: No

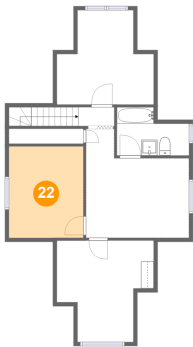
21 Floor 3 - Bedroom



Dimensions: 12'3" x 11'11"  
Area: 84 sq. ft  
Counted as living area: Yes

Heated: Yes  
Finished: Yes  
Enclosed: Yes  
Contiguous: Yes  
Permitted: Yes  
Wet space: No  
Addition: No  
Conversion: No

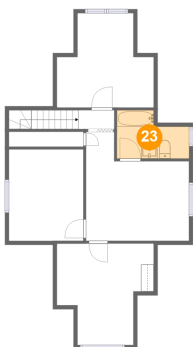
22 Floor 3 - Bedroom



Dimensions: 9'5" x 11'6"  
Area: 108 sq. ft  
Counted as living area: Yes

Heated: Yes  
Finished: Yes  
Enclosed: Yes  
Contiguous: Yes  
Permitted: Yes  
Wet space: No  
Addition: No  
Conversion: No

23 Floor 3 - Bath



Dimensions: 9'1" x 6'1"  
Area: 46 sq. ft  
Counted as living area: Yes

Heated: Yes  
Finished: Yes  
Enclosed: Yes  
Contiguous: Yes  
Permitted: Yes  
Wet space: Yes  
Addition: No  
Conversion: No

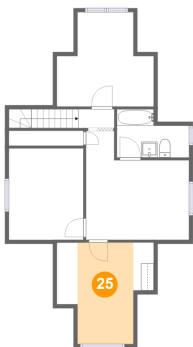
24 Floor 3 - Loft



Dimensions: 13'0" x 13'9"  
Area: 144 sq. ft  
Counted as living area: Yes

Heated: Yes  
Finished: Yes  
Enclosed: Yes  
Contiguous: Yes  
Permitted: Yes  
Wet space: No  
Addition: No  
Conversion: No

25 Floor 3 - Bedroom



Dimensions: 12'2" x 12'9"  
Area: 90 sq. ft  
Counted as living area: Yes

Heated: Yes  
Finished: Yes  
Enclosed: Yes  
Contiguous: Yes  
Permitted: Yes  
Wet space: No  
Addition: No  
Conversion: No