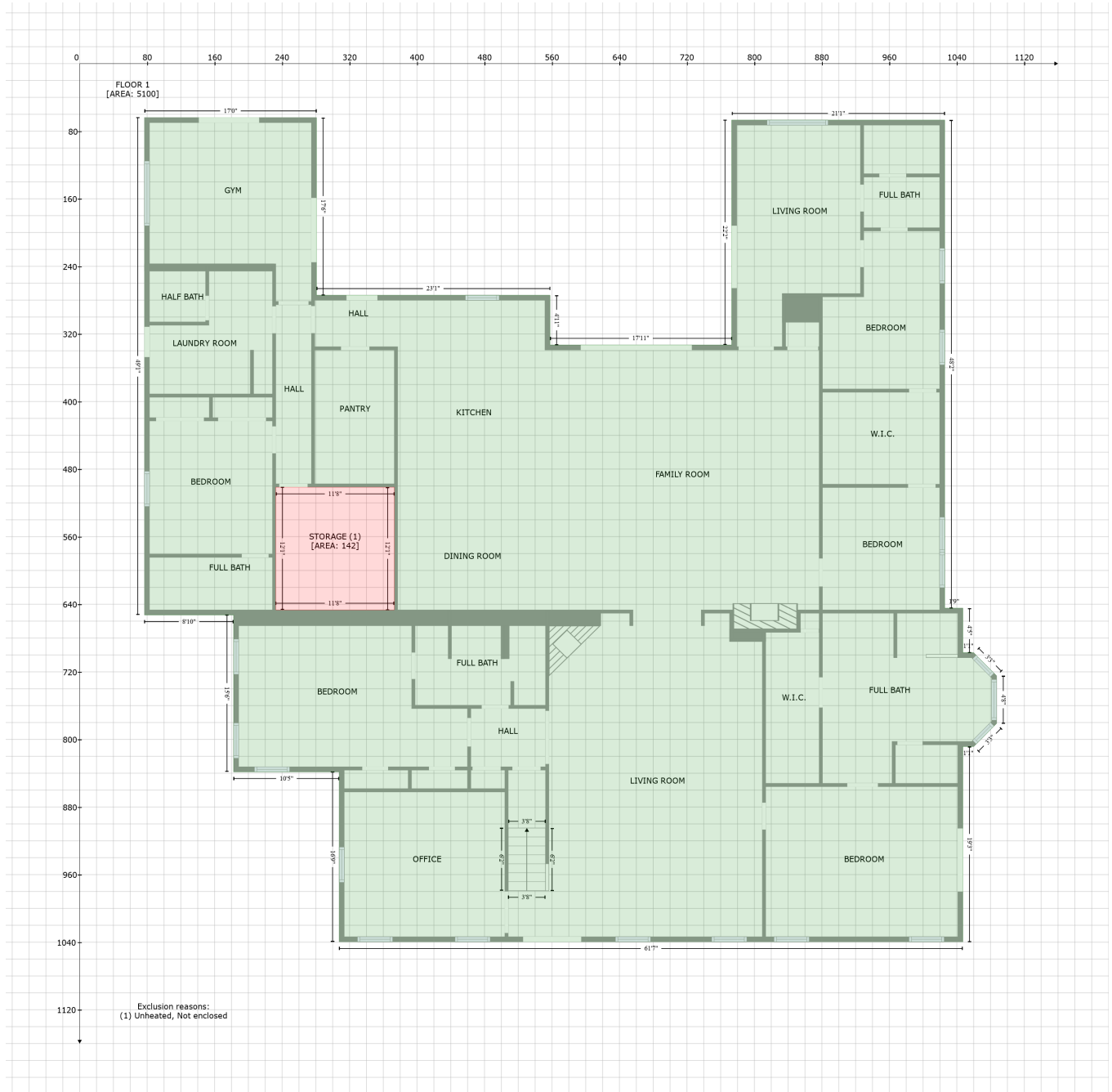


344 Barrow-White Road, Anahuac, Chambers County, Texas, United States, 77514

Gross Living Area: 5735 sq. ft



Space

Area (sq. ft)

Calculation Coordinate Polygon Area Algorithm using inches

FLOOR 1
(Living area)

5100

$$\begin{aligned}
 & -((280.8 + 280.8) * (63.9 - 274.2) + (280.8 + 557.6) * (274.2 - 274.2) + (557.6 + 557.6) * (274.2 - \\
 & 333.1) + (557.6 + 773.1) * (333.1 - 333.1) + (773.1 + 773.1) * (333.1 - 66.9) + (773.1 + 1025.6) * \\
 & (66.9 - 66.9) + (1025.6 + 1025.6) * (66.9 - 644.7) + (1025.6 + 1047.1) * (644.7 - 644.7) + (1047.1 \\
 & + 1047.1) * (644.7 - 697.3) + (1047.1 + 1060) * (697.3 - 697.3) + (1060 + 1087.2) * (697.3 - \\
 & 724.7) + (1087.2 + 1087.2) * (724.7 - 781.1) + (1087.2 + 1060.1) * (781.1 - 808.4) + (1060.1 + \\
 & 1047.1) * (808.4 - 808.4) + (1047.1 + 1047.1) * (808.4 - 1039.6) + (1047.1 + 307.7) * (1039.6 - \\
 & 1039.6) + (307.7 + 307.7) * (1039.6 - 838.4) + (307.7 + 182.5) * (838.4 - 838.4) + (182.5 + 182.5)
 \end{aligned}$$

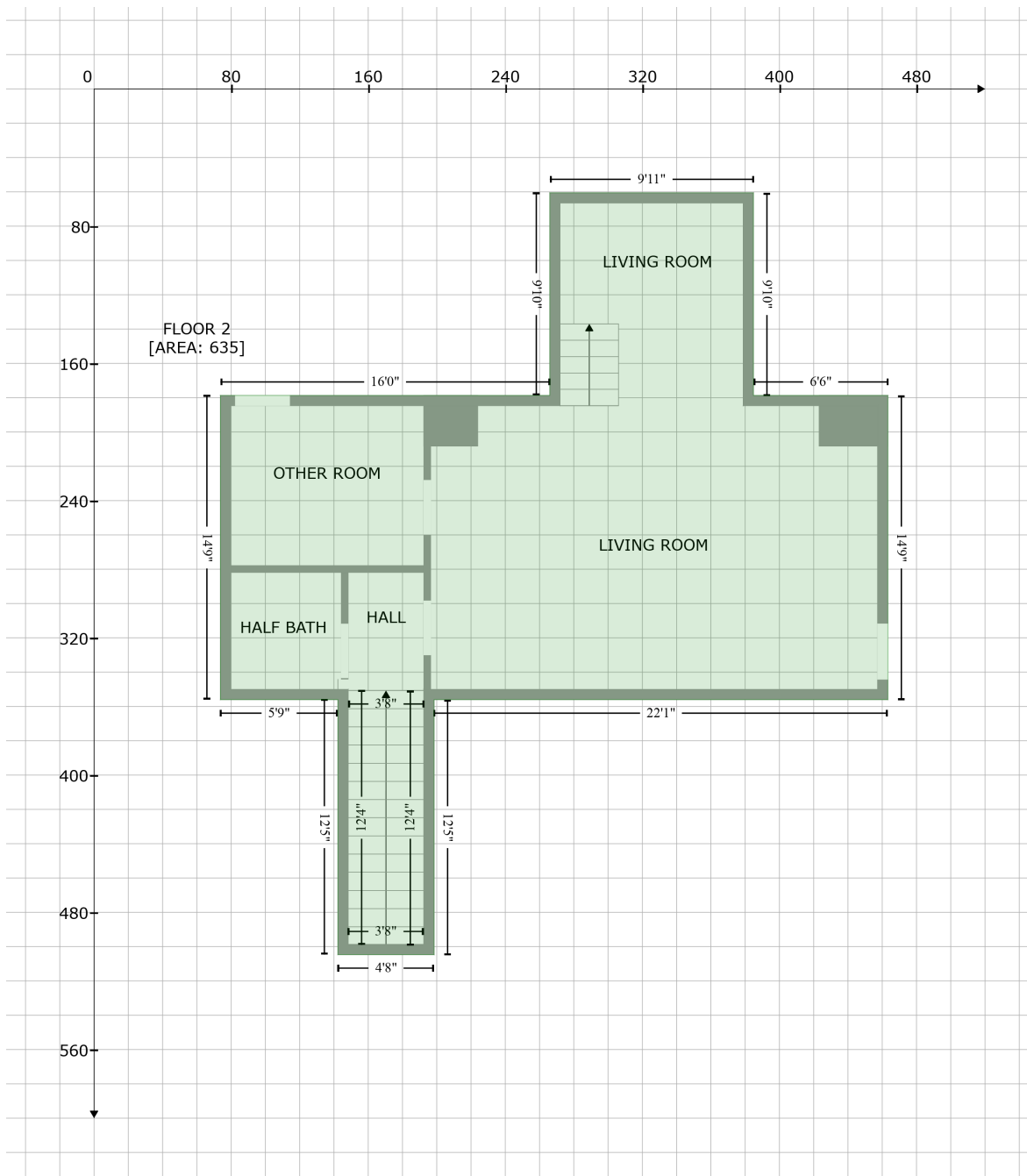
344 Barrow-White Road, Anahuac, Chambers County, Texas, United States, 77514

Gross Living Area: 5735 sq. ft

| Space | Area (sq. ft) | Calculation <small>Coordinate Polygon Area Algorithm using inches</small> |
|------------------------------|---------------|--|
| | | $\begin{aligned} & * (838.4 - 652.7) + (182.5 + 76.8) * (652.7 - 652.7) + (76.8 + 76.8) * (652.7 - 63.9) + (76.8 + \\ & 280.8) * (63.9 - 63.9) * 0.5 * 0.00694 + -((373.1 + 232.6) * (501.4 - 501.4) + (232.6 + 232.6) * \\ & (501.4 - 646.7) + (232.6 + 373.1) * (646.7 - 646.7) + (373.1 + 373.1) * (646.7 - 501.4)) * 0.5 * \\ & 0.00694 \end{aligned}$ |
| STORAGE (Non-living area) | 142 | $\begin{aligned} & -((373.1 + 373.1) * (501.4 - 646.7) + (373.1 + 232.6) * (646.7 - 646.7) + (232.6 + 232.6) * (646.7 - \\ & 501.4) + (232.6 + 373.1) * (501.4 - 501.4)) * 0.5 * 0.00694 \end{aligned}$ |

344 Barrow-White Road, Anahuac, Chambers County, Texas, United States, 77514

Gross Living Area: 5735 sq. ft



Space

Area (sq. ft)

Calculation Coordinate Polygon Area Algorithm using inches

FLOOR 2
(Living area)

635

$$-((384.8 + 384.8) * (60.6 - 178.7) + (384.8 + 463.3) * (178.7 - 178.7) + (463.3 + 463.3) * (178.7 - 356) + (463.3 + 198.5) * (356 - 356) + (198.5 + 198.5) * (356 - 504.7) + (198.5 + 142.3) * (504.7 - 504.7) + (142.3 + 142.3) * (504.7 - 356) + (142.3 + 73.7) * (356 - 356) + (73.7 + 73.7) * (356 - 178.7) + (73.7 + 266) * (178.7 - 178.7) + (266 + 266) * (178.7 - 60.6) + (266 + 384.8) * (60.6 - 60.6)) * 0.5 * 0.00694$$