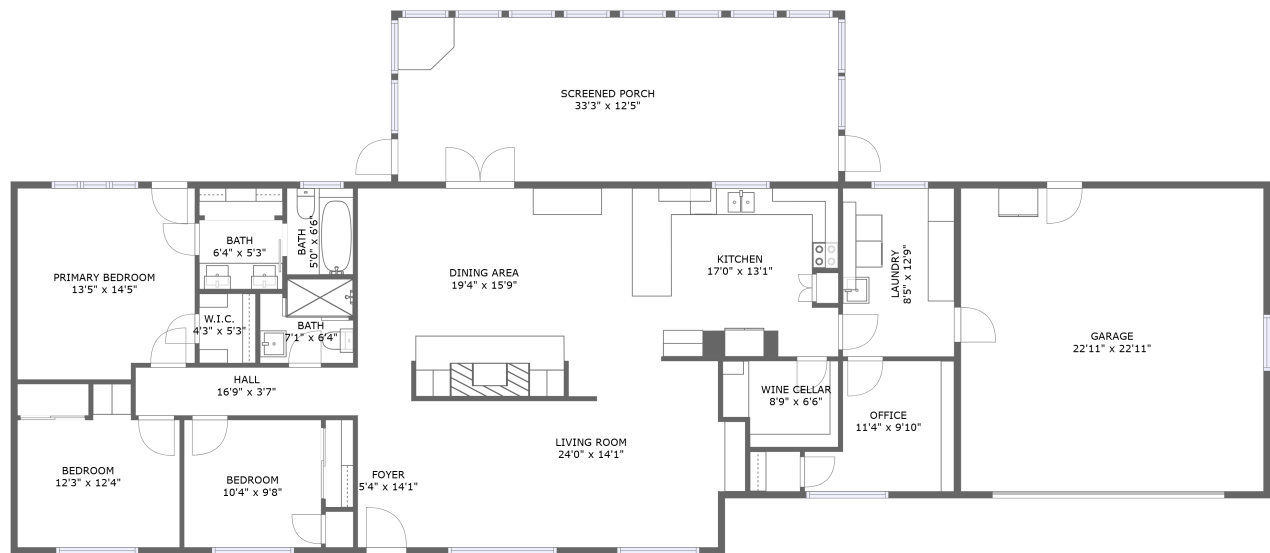


Home report

8445 Los Osos Road, Atascadero, San Luis Obispo County,
California, United States, 93422



FLOOR 1

Total Area: 1796 sq. ft

Floor 1: 1796 sq. ft

Excluded: Garage 525 sq. ft, Wine cellar 52 sq. ft, Screened porch 414 sq. ft, Walls: 163 sq. ft

Property summary

 **1** Floors

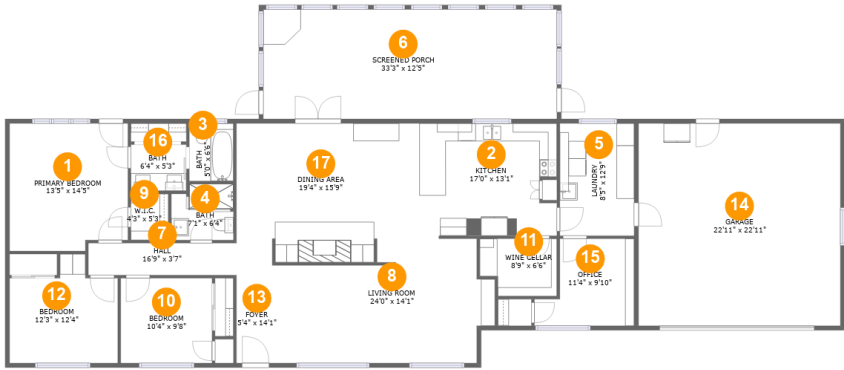
 **3** Bedrooms

 **2** Bathrooms

 **1** Garages

Home report

8445 Los Osos Road, Atascadero, San Luis Obispo County,
California, United States, 93422



Room dimensions

Floor 1 Total:1796sqft Excluded: 991sqft

#		Max Dimensions	sqft	Included
1	Primary Bedroom	13'5" x 14'5"	188 sq. ft	Yes
2	Kitchen	17'0" x 13'1"	212 sq. ft	Yes
3	Bath	5'0" x 6'6"	33 sq. ft	Yes
4	Bath	7'1" x 6'4"	43 sq. ft	Yes
5	Laundry	8'5" x 12'9"	107 sq. ft	Yes
6	Screened Porch	33'3" x 12'5"	414 sq. ft	No
7	Hall	16'9" x 3'7"	61 sq. ft	Yes
8	Living Room	24'0" x 14'1"	288 sq. ft	Yes
9	W.I.C.	4'3" x 5'3"	22 sq. ft	Yes
10	Bedroom	10'4" x 9'8"	100 sq. ft	Yes
11	Wine Cellar	8'9" x 6'6"	52 sq. ft	No

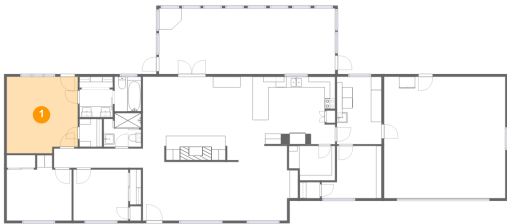
Home report

**8445 Los Osos Road, Atascadero, San Luis Obispo County,
California, United States, 93422**

#		Max Dimensions	sqft	Included
12	Bedroom	12'3" x 12'4"	126 sq. ft	Yes
13	Foyer	5'4" x 14'1"	71 sq. ft	Yes
14	Garage	22'11" x 22'11"	525 sq. ft	No
15	Office	11'4" x 9'10"	92 sq. ft	Yes
16	Bath	6'4" x 5'3"	33 sq. ft	Yes
17	Dining Area	19'4" x 15'9"	282 sq. ft	Yes

8445 Los Osos Road, Atascadero, San Luis Obispo County,
California, United States, 93422

1 Floor 1 - Primary Bedroom



Max Dimensions: 13'5" x 14'5"
Calculated Area: 188 sq. ft
Included: Yes

Heated: Yes
Finished: Yes
Enclosed: Yes
Contiguous: Yes
Permitted: Yes
Wet space: No
Addition: No
Conversion: No

2 Floor 1 - Kitchen



Max Dimensions: 17'0" x 13'1"
Calculated Area: 212 sq. ft
Included: Yes

Heated: Yes
Finished: Yes
Enclosed: Yes
Contiguous: Yes
Permitted: Yes
Wet space: No
Addition: No
Conversion: No

8445 Los Osos Road, Atascadero, San Luis Obispo County,
California, United States, 93422

3 Floor 1 - Bath



Max Dimensions: 5'0" x 6'6"
Calculated Area: 33 sq. ft
Included: Yes

Heated: Yes
Finished: Yes
Enclosed: Yes
Contiguous: Yes
Permitted: Yes
Wet space: Yes
Addition: No
Conversion: No

4 Floor 1 - Bath



Max Dimensions: 7'1" x 6'4"
Calculated Area: 43 sq. ft
Included: Yes

Heated: Yes
Finished: Yes
Enclosed: Yes
Contiguous: Yes
Permitted: Yes
Wet space: Yes
Addition: No
Conversion: No

5 Floor 1 - Laundry



Max Dimensions: 8'5" x 12'9"
Calculated Area: 107 sq. ft
Included: Yes

Heated: Yes
Finished: Yes
Enclosed: Yes
Contiguous: Yes
Permitted: Yes
Wet space: No
Addition: No
Conversion: No

8445 Los Osos Road, Atascadero, San Luis Obispo County,
California, United States, 93422

6 Floor 1 - Screened Porch



Max Dimensions: 33'3" x 12'5"
Calculated Area: 414 sq. ft
Included: No

Heated: No
Finished: Yes
Enclosed: No
Contiguous: Yes
Permitted: Yes
Wet space: No
Addition: No
Conversion: No

7 Floor 1 - Hall



Max Dimensions: 16'9" x 3'7"
Calculated Area: 61 sq. ft
Included: Yes

Heated: Yes
Finished: Yes
Enclosed: Yes
Contiguous: Yes
Permitted: Yes
Wet space: No
Addition: No
Conversion: No

8 Floor 1 - Living Room



Max Dimensions: 24'0" x 14'1"
Calculated Area: 288 sq. ft
Included: Yes

Heated: Yes
Finished: Yes
Enclosed: Yes
Contiguous: Yes
Permitted: Yes
Wet space: No
Addition: No
Conversion: No

8445 Los Osos Road, Atascadero, San Luis Obispo County,
California, United States, 93422

9 Floor 1 - W.I.C.



Max Dimensions: 4'3" x 5'3"
Calculated Area: 22 sq. ft
Included: Yes

Heated: Yes
Finished: Yes
Enclosed: Yes
Contiguous: Yes
Permitted: Yes
Wet space: No
Addition: No
Conversion: No

10 Floor 1 - Bedroom



Max Dimensions: 10'4" x 9'8"
Calculated Area: 100 sq. ft
Included: Yes

Heated: Yes
Finished: Yes
Enclosed: Yes
Contiguous: Yes
Permitted: Yes
Wet space: No
Addition: No
Conversion: No

11 Floor 1 - Wine Cellar



Max Dimensions: 8'9" x 6'6"
Calculated Area: 52 sq. ft
Included: No

Heated: No
Finished: No
Enclosed: Yes
Contiguous: Yes
Permitted: Yes
Wet space: No
Addition: No
Conversion: No

8445 Los Osos Road, Atascadero, San Luis Obispo County,
California, United States, 93422

12 Floor 1 - Bedroom



Max Dimensions: 12'3" x 12'4"
Calculated Area: 126 sq. ft
Included: Yes

Heated: Yes
Finished: Yes
Enclosed: Yes
Contiguous: Yes
Permitted: Yes
Wet space: No
Addition: No
Conversion: No

13 Floor 1 - Foyer



Max Dimensions: 5'4" x 14'1"
Calculated Area: 71 sq. ft
Included: Yes

Heated: Yes
Finished: Yes
Enclosed: Yes
Contiguous: Yes
Permitted: Yes
Wet space: No
Addition: No
Conversion: No

14 Floor 1 - Garage



Max Dimensions: 22'11" x 22'11"
Calculated Area: 525 sq. ft
Included: No

Heated: No
Finished: No
Enclosed: Yes
Contiguous: Yes
Permitted: Yes
Wet space: No
Addition: No
Conversion: No

8445 Los Osos Road, Atascadero, San Luis Obispo County,
California, United States, 93422

15 Floor 1 - Office



Max Dimensions: 11'4" x 9'10"
Calculated Area: 92 sq. ft
Included: Yes

Heated: Yes
Finished: Yes
Enclosed: Yes
Contiguous: Yes
Permitted: Yes
Wet space: No
Addition: No
Conversion: No

16 Floor 1 - Bath



Max Dimensions: 6'4" x 5'3"
Calculated Area: 33 sq. ft
Included: Yes

Heated: Yes
Finished: Yes
Enclosed: Yes
Contiguous: Yes
Permitted: Yes
Wet space: Yes
Addition: No
Conversion: No

17 Floor 1 - Dining Area



Max Dimensions: 19'4" x 15'9"
Calculated Area: 282 sq. ft
Included: Yes

Heated: Yes
Finished: Yes
Enclosed: Yes
Contiguous: Yes
Permitted: Yes
Wet space: No
Addition: No
Conversion: No