

Home data report

6113 S Roaring River Ave,Boise,ID,US



Total Area: 2234 sq. ft

1st Floor: 1747 sq. ft, 2nd Floor: 487 sq. ft

Excluded: Garage 792 sq. ft, Fireplace 11 sq. ft, Open to below 19 sq. ft

Property summary

 **2** Floors

 **4** Bedrooms

 **2** Bathrooms

Home data report

6113 S Roaring River Ave,Boise,ID,US



1
Half baths



1
Garages

Home data report

6113 S Roaring River Ave,Boise,ID,US



Room dimensions

Floor 1 Total:1747sqft Excluded: 803sqft

#		Dimensions	sqft	Counted as living area
1	Hall	9'10" x 4'10"	45 sq. ft	Yes
2	Bedroom	10'7" x 10'4"	106 sq. ft	Yes
3	W.I.C.	7'3" x 9'7"	62 sq. ft	Yes
4	Bedroom	10'3" x 13'2"	132 sq. ft	Yes
5	Garage	32'5" x 26'9"	745 sq. ft	No
6	Dining Area	12'8" x 8'9"	97 sq. ft	Yes
7	Hall	4'8" x 10'4"	31 sq. ft	Yes
8	Laundry	6'8" x 7'9"	46 sq. ft	Yes
9	Primary Bath	7'6" x 14'4"	77 sq. ft	Yes
10	Living Room	12'8" x 20'8"	251 sq. ft	Yes
11	Bath	4'9" x 8'3"	37 sq. ft	Yes

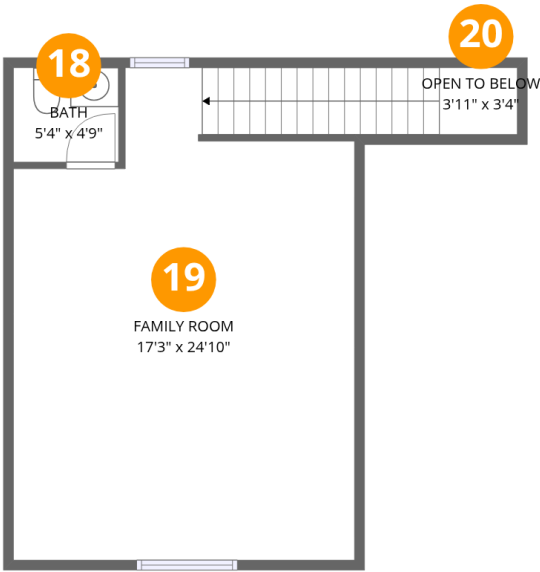
Home data report

6113 S Roaring River Ave,Boise,ID,US

#		Dimensions	sqft	Counted as living area
12	Foyer	4'0" x 10'4"	41 sq. ft	Yes
13	Bedroom	11'8" x 10'3"	120 sq. ft	Yes
14	Kitchen	12'8" x 14'5"	166 sq. ft	Yes
15	Primary Bedroom	12'7" x 15'9"	170 sq. ft	Yes
16	Hall	7'7" x 10'11"	105 sq. ft	Yes
17	Bath	8'3" x 4'11"	41 sq. ft	Yes

Home data report

6113 S Roaring River Ave,Boise,ID,US



Room dimensions

Floor 2 Total:487sqft Excluded: 19sqft

#		Dimensions	sqft	Counted as living area
18	Bath	5'4" x 4'9"	25 sq. ft	Yes
19	Family Room	17'3" x 24'10"	411 sq. ft	Yes
20	Open To Below	3'11" x 3'4"	13 sq. ft	No

1 Floor 1 - Hall



Dimensions: 9'10" x 4'10"
Area: 45 sq. ft
Counted as living area: Yes

Heated: Yes
Finished: Yes
Enclosed: Yes
Contiguous: Yes
Permitted: Yes
Wet space: No
Addition: No
Conversion: No

2 Floor 1 - Bedroom



Dimensions: 10'7" x 10'4"
Area: 106 sq. ft
Counted as living area: Yes

Heated: Yes
Finished: Yes
Enclosed: Yes
Contiguous: Yes
Permitted: Yes
Wet space: No
Addition: No
Conversion: No

3 Floor 1 - W.I.C.



Dimensions: 7'3" x 9'7"
Area: 62 sq. ft
Counted as living area: Yes

Heated: Yes
Finished: Yes
Enclosed: Yes
Contiguous: Yes
Permitted: Yes
Wet space: No
Addition: No
Conversion: No

4 Floor 1 - Bedroom



Dimensions: 10'3" x 13'2"
Area: 132 sq. ft
Counted as living area: Yes

Heated: Yes
Finished: Yes
Enclosed: Yes
Contiguous: Yes
Permitted: Yes
Wet space: No
Addition: No
Conversion: No

5 Floor 1 - Garage



Dimensions: 32'5" x 26'9"
Area: 745 sq. ft
Counted as living area: No

Heated: No
Finished: No
Enclosed: Yes
Contiguous: Yes
Permitted: Yes
Wet space: No
Addition: No
Conversion: No

6 Floor 1 - Dining Area



Dimensions: 12'8" x 8'9"
Area: 97 sq. ft
Counted as living area: Yes

Heated: Yes
Finished: Yes
Enclosed: Yes
Contiguous: Yes
Permitted: Yes
Wet space: No
Addition: No
Conversion: No

7 Floor 1 - Hall



Dimensions: 4'8" x 10'4"
Area: 31 sq. ft
Counted as living area: Yes

Heated: Yes
Finished: Yes
Enclosed: Yes
Contiguous: Yes
Permitted: Yes
Wet space: No
Addition: No
Conversion: No

8 Floor 1 - Laundry



Dimensions: 6'8" x 7'9"
Area: 46 sq. ft
Counted as living area: Yes

Heated: Yes
Finished: Yes
Enclosed: Yes
Contiguous: Yes
Permitted: Yes
Wet space: No
Addition: No
Conversion: No

9 Floor 1 - Primary Bath



Dimensions: 7'6" x 14'4"
Area: 77 sq. ft
Counted as living area: Yes

Heated: Yes
Finished: Yes
Enclosed: Yes
Contiguous: Yes
Permitted: Yes
Wet space: Yes
Addition: No
Conversion: No

10 Floor 1 - Living Room



Dimensions: 12'8" x 20'8"
Area: 251 sq. ft
Counted as living area: Yes

Heated: Yes
Finished: Yes
Enclosed: Yes
Contiguous: Yes
Permitted: Yes
Wet space: No
Addition: No
Conversion: No

11 Floor 1 - Bath



Dimensions: 4'9" x 8'3"
Area: 37 sq. ft
Counted as living area: Yes

Heated: Yes
Finished: Yes
Enclosed: Yes
Contiguous: Yes
Permitted: Yes
Wet space: Yes
Addition: No
Conversion: No

12 Floor 1 - Foyer



Dimensions: 4'0" x 10'4"
Area: 41 sq. ft
Counted as living area: Yes

Heated: Yes
Finished: Yes
Enclosed: Yes
Contiguous: Yes
Permitted: Yes
Wet space: No
Addition: No
Conversion: No

13 Floor 1 - Bedroom



Dimensions: 11'8" x 10'3"
Area: 120 sq. ft
Counted as living area: Yes

Heated: Yes
Finished: Yes
Enclosed: Yes
Contiguous: Yes
Permitted: Yes
Wet space: No
Addition: No
Conversion: No

14 Floor 1 - Kitchen



Dimensions: 12'8" x 14'5"
Area: 166 sq. ft
Counted as living area: Yes

Heated: Yes
Finished: Yes
Enclosed: Yes
Contiguous: Yes
Permitted: Yes
Wet space: No
Addition: No
Conversion: No

15 Floor 1 - Primary Bedroom



Dimensions: 12'7" x 15'9"
Area: 170 sq. ft
Counted as living area: Yes

Heated: Yes
Finished: Yes
Enclosed: Yes
Contiguous: Yes
Permitted: Yes
Wet space: No
Addition: No
Conversion: No

16 Floor 1 - Hall



Dimensions: 7'7" x 10'11"
Area: 105 sq. ft
Counted as living area: Yes

Heated: Yes
Finished: Yes
Enclosed: Yes
Contiguous: Yes
Permitted: Yes
Wet space: No
Addition: No
Conversion: No

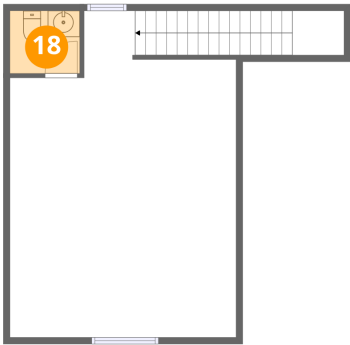
17 Floor 1 - Bath



Dimensions: 8'3" x 4'11"
Area: 41 sq. ft
Counted as living area: Yes

Heated: Yes
Finished: Yes
Enclosed: Yes
Contiguous: Yes
Permitted: Yes
Wet space: Yes
Addition: No
Conversion: No

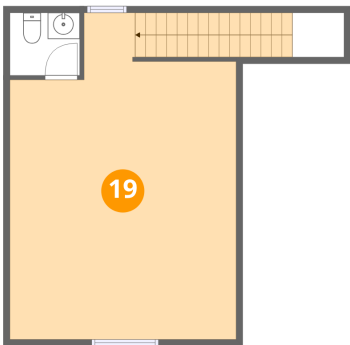
18 Floor 2 - Bath



Dimensions: 5'4" x 4'9"
Area: 25 sq. ft
Counted as living area: Yes

Heated: Yes
Finished: Yes
Enclosed: Yes
Contiguous: Yes
Permitted: Yes
Wet space: Yes
Addition: No
Conversion: No

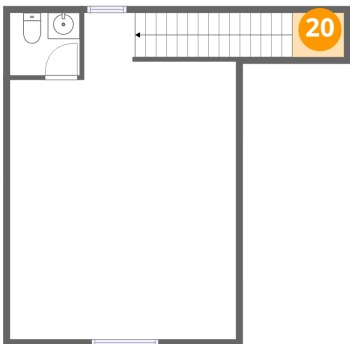
19 Floor 2 - Family Room



Dimensions: 17'3" x 24'10"
Area: 411 sq. ft
Counted as living area: Yes

Heated: Yes
Finished: Yes
Enclosed: Yes
Contiguous: Yes
Permitted: Yes
Wet space: No
Addition: No
Conversion: No

20 Floor 2 - Open To Below



Dimensions: 3'11" x 3'4"
Area: 13 sq. ft
Counted as living area: No

Heated: No
Finished: No
Enclosed: No
Contiguous: Yes
Permitted: No
Wet space: No
Addition: No
Conversion: No