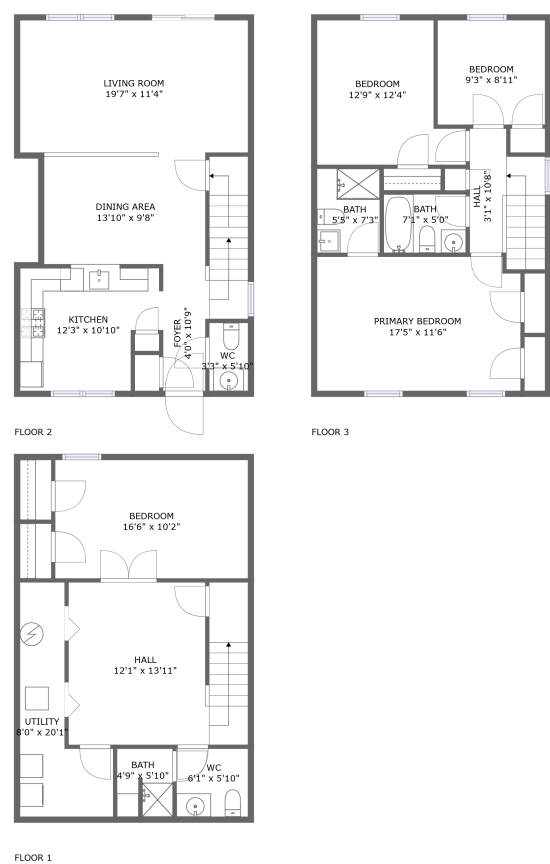



Home report


1081 Copperstone Court, Hungerford Towne, Rockville,  
Montgomery County, Maryland, United States, 20852




Property summary




**0**  
Garages



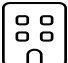
**4**  
Bedrooms




**3**  
Bathrooms




**1**  
Half baths



**3**  
Floors



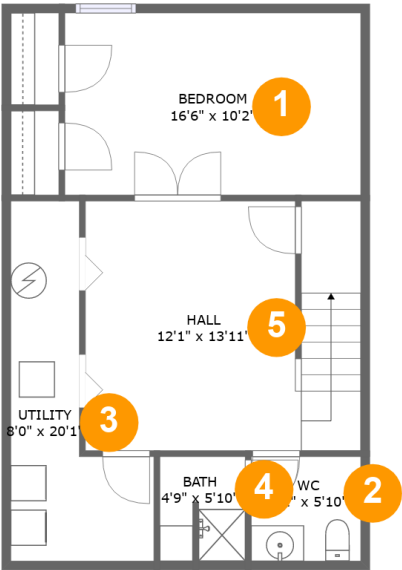
**1,842**  
Gross living  
area sqft



**1,952**  
Total sqft

Home report

1081 Copperstone Court, Hungerford Towne, Rockville,  
Montgomery County, Maryland, United States, 20852



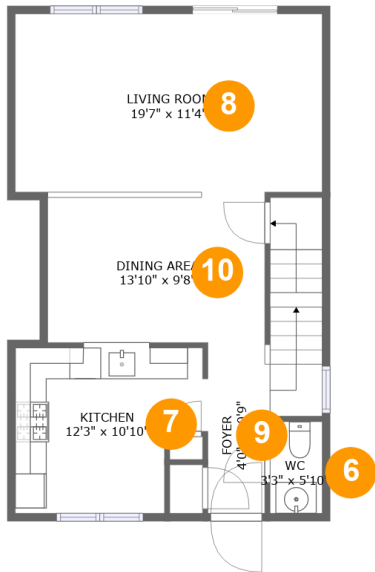
Room dimensions

Floor 1 Total sqft: 633    Living area: 523

#		Dimensions	sqft	Counted as living area
1	Bedroom	16'6" x 10'2"	168 sq. ft	Yes
2	WC	6'1" x 5'10"	36 sq. ft	Yes
3	Utility	8'0" x 20'1"	102 sq. ft	No
4	Bath	4'9" x 5'10"	27 sq. ft	Yes
5	Hall	12'1" x 13'11"	194 sq. ft	Yes

Home report

1081 Copperstone Court, Hungerford Towne, Rockville,  
Montgomery County, Maryland, United States, 20852



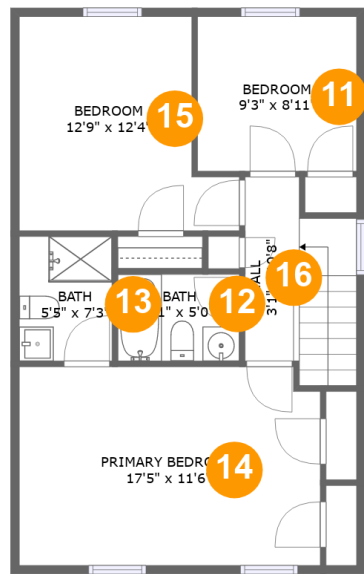
Room dimensions

Floor 2 Total sqft: 653 Living area: 653

#		Dimensions	sqft	Counted as living area
6	WC	3'3" x 5'10"	19 sq. ft	Yes
7	Kitchen	12'3" x 10'10"	116 sq. ft	Yes
8	Living Room	19'7" x 11'4"	222 sq. ft	Yes
9	Foyer	4'0" x 10'9"	87 sq. ft	Yes
10	Dining Area	13'10" x 9'8"	133 sq. ft	Yes

Home report

1081 Copperstone Court, Hungerford Towne, Rockville,  
Montgomery County, Maryland, United States, 20852

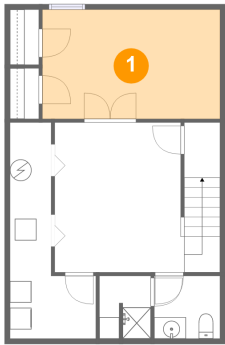


Room dimensions

Floor 3 Total sqft: 666    Living area: 666

#		Dimensions	sqft	Counted as living area
11	Bedroom	9'3" x 8'11"	83 sq. ft	Yes
12	Bath	7'1" x 5'0"	35 sq. ft	Yes
13	Bath	5'5" x 7'3"	39 sq. ft	Yes
14	Primary Bedroom	17'5" x 11'6"	199 sq. ft	Yes
15	Bedroom	12'9" x 12'4"	133 sq. ft	Yes
16	Hall	3'1" x 10'8"	66 sq. ft	Yes

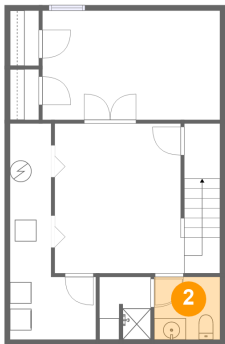
1 Floor 1 - Bedroom



Dimensions: 16'6" x 10'2"  
Area: 168 sq. ft  
Counted as living area: Yes

Heated: Yes  
Finished: Yes  
Enclosed: Yes  
Contiguous: Yes  
Permitted: Yes  
Wet space: No  
Addition: No  
Conversion: No

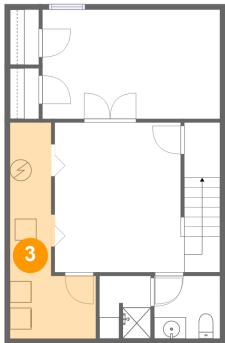
2 Floor 1 - WC



Dimensions: 6'1" x 5'10"  
Area: 36 sq. ft  
Counted as living area: Yes

Heated: Yes  
Finished: Yes  
Enclosed: Yes  
Contiguous: Yes  
Permitted: Yes  
Wet space: Yes  
Addition: No  
Conversion: No

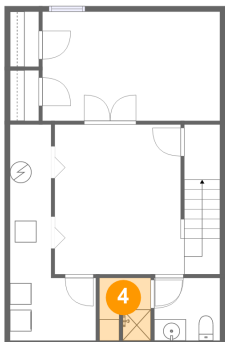
3 Floor 1 - Utility



Dimensions: 8'0" x 20'1"  
Area: 102 sq. ft  
Counted as living area: No

Heated: Yes  
Finished: No  
Enclosed: Yes  
Contiguous: Yes  
Permitted: Yes  
Wet space: No  
Addition: No  
Conversion: No

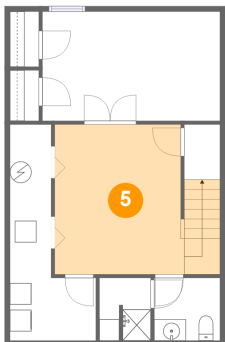
4 Floor 1 - Bath



Dimensions: 4'9" x 5'10"  
Area: 27 sq. ft  
Counted as living area: Yes

Heated: Yes  
Finished: Yes  
Enclosed: Yes  
Contiguous: Yes  
Permitted: Yes  
Wet space: Yes  
Addition: No  
Conversion: No

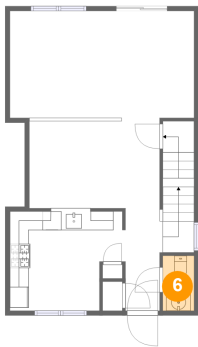
5 Floor 1 - Hall



Dimensions: 12'1" x 13'11"  
Area: 194 sq. ft  
Counted as living area: Yes

Heated: Yes  
Finished: Yes  
Enclosed: Yes  
Contiguous: Yes  
Permitted: Yes  
Wet space: No  
Addition: No  
Conversion: No

6 Floor 2 - WC



Dimensions: 3'3" x 5'10"  
Area: 19 sq. ft  
Counted as living area: Yes

Heated: Yes  
Finished: Yes  
Enclosed: Yes  
Contiguous: Yes  
Permitted: Yes  
Wet space: Yes  
Addition: No  
Conversion: No

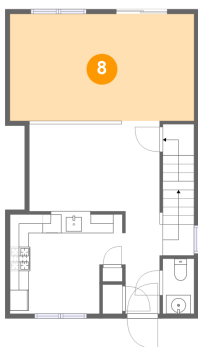
7 Floor 2 - Kitchen



Dimensions: 12'3" x 10'10"  
Area: 116 sq. ft  
Counted as living area: Yes

Heated: Yes  
Finished: Yes  
Enclosed: Yes  
Contiguous: Yes  
Permitted: Yes  
Wet space: No  
Addition: No  
Conversion: No

8 Floor 2 - Living Room



Dimensions: 19'7" x 11'4"  
Area: 222 sq. ft  
Counted as living area: Yes

Heated: Yes  
Finished: Yes  
Enclosed: Yes  
Contiguous: Yes  
Permitted: Yes  
Wet space: No  
Addition: No  
Conversion: No

1081 Copperstone Court, Hungerford Towne, Rockville,  
Montgomery County, Maryland, United States, 20852

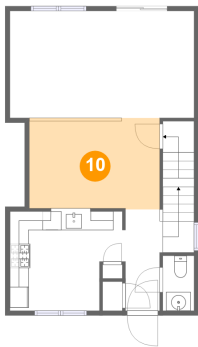
9 Floor 2 - Foyer



Dimensions: 4'0" x 10'9"  
Area: 87 sq. ft  
Counted as living area: Yes

Heated: Yes  
Finished: Yes  
Enclosed: Yes  
Contiguous: Yes  
Permitted: Yes  
Wet space: No  
Addition: No  
Conversion: No

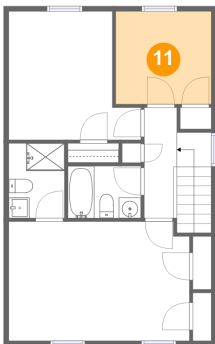
10 Floor 2 - Dining Area



Dimensions: 13'10" x 9'8"  
Area: 133 sq. ft  
Counted as living area: Yes

Heated: Yes  
Finished: Yes  
Enclosed: Yes  
Contiguous: Yes  
Permitted: Yes  
Wet space: No  
Addition: No  
Conversion: No

11 Floor 3 - Bedroom



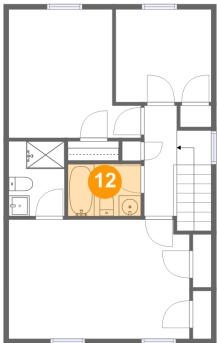
Dimensions: 9'3" x 8'11"  
Area: 83 sq. ft  
Counted as living area: Yes

Heated: Yes  
Finished: Yes  
Enclosed: Yes  
Contiguous: Yes  
Permitted: Yes  
Wet space: No  
Addition: No  
Conversion: No



1081 Copperstone Court, Hungerford Towne, Rockville,  
Montgomery County, Maryland, United States, 20852

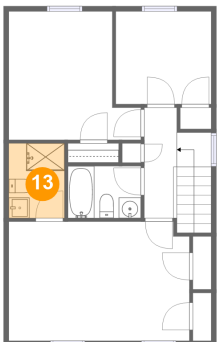
12 Floor 3 - Bath



Dimensions: 7'1" x 5'0"  
Area: 35 sq. ft  
Counted as living area: Yes

Heated: Yes  
Finished: Yes  
Enclosed: Yes  
Contiguous: Yes  
Permitted: Yes  
Wet space: Yes  
Addition: No  
Conversion: No

13 Floor 3 - Bath



Dimensions: 5'5" x 7'3"  
Area: 39 sq. ft  
Counted as living area: Yes

Heated: Yes  
Finished: Yes  
Enclosed: Yes  
Contiguous: Yes  
Permitted: Yes  
Wet space: Yes  
Addition: No  
Conversion: No

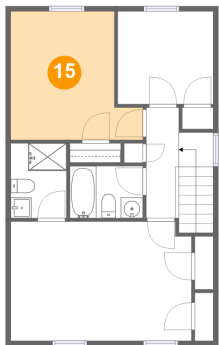
14 Floor 3 - Primary Bedroom



Dimensions: 17'5" x 11'6"  
Area: 199 sq. ft  
Counted as living area: Yes

Heated: Yes  
Finished: Yes  
Enclosed: Yes  
Contiguous: Yes  
Permitted: Yes  
Wet space: No  
Addition: No  
Conversion: No

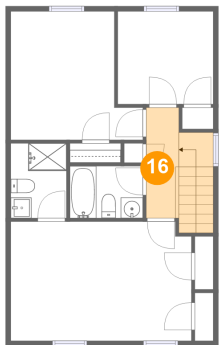
15 Floor 3 - Bedroom



Dimensions: 12'9" x 12'4"  
Area: 133 sq. ft  
Counted as living area: Yes

Heated: Yes  
Finished: Yes  
Enclosed: Yes  
Contiguous: Yes  
Permitted: Yes  
Wet space: No  
Addition: No  
Conversion: No

16 Floor 3 - Hall



Dimensions: 3'1" x 10'8"  
Area: 66 sq. ft  
Counted as living area: Yes

Heated: Yes  
Finished: Yes  
Enclosed: Yes  
Contiguous: Yes  
Permitted: Yes  
Wet space: No  
Addition: No  
Conversion: No