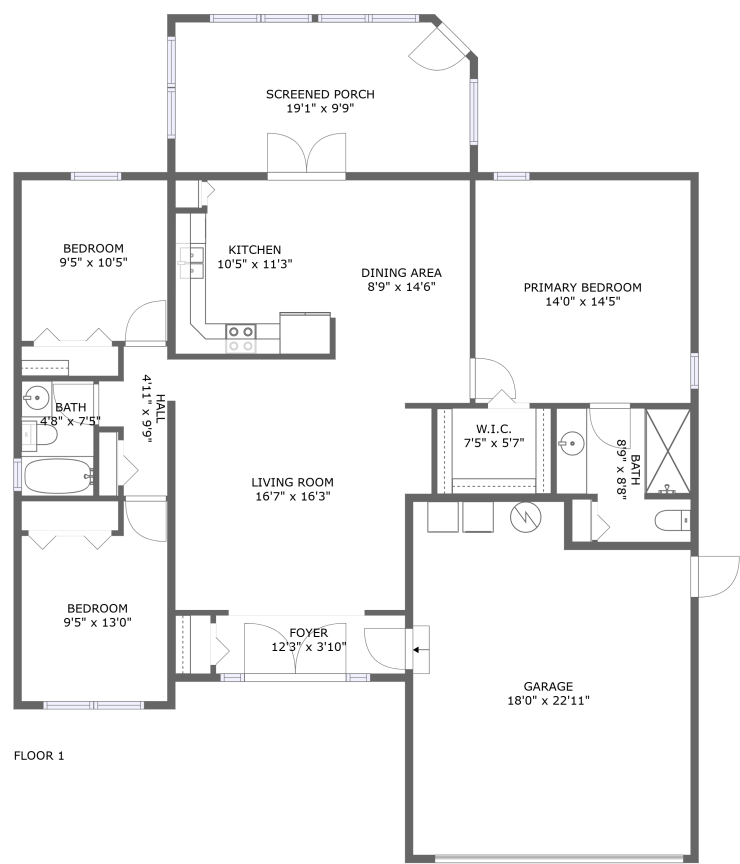


Home report

1455 Coastal Place, Willow Wood Village, Dunedin, Pinellas County, Florida, United States, 34698



Total Area: 1215 sq. ft

Floor 1: 1215 sq. ft

Excluded: Garage 387 sq. ft, Screened porch 183 sq. ft, Walls: 126 sq. ft

Property summary

1 Floors

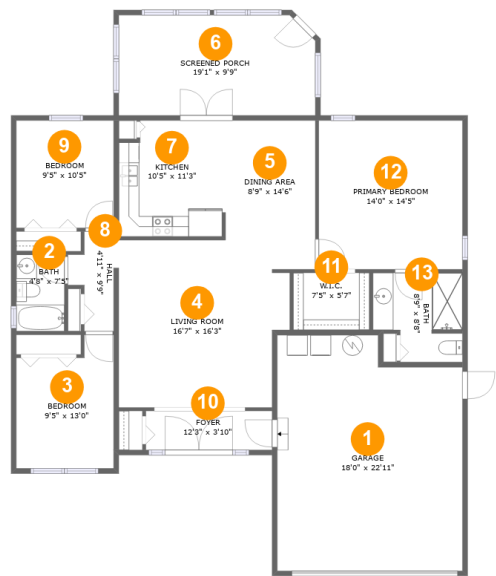
3 Bedrooms

2 Bathrooms

1 Garages

Home report

1455 Coastal Place, Willow Wood Village, Dunedin, Pinellas
County, Florida, United States, 34698



Room dimensions

Floor 1 Total:1215sqft Excluded: 570sqft

| # | | Max Dimensions | sqft | Included |
|----|----------------|----------------|------------|----------|
| 1 | Garage | 18'0" x 22'11" | 387 sq. ft | No |
| 2 | Bath | 4'8" x 7'5" | 35 sq. ft | Yes |
| 3 | Bedroom | 9'5" x 13'0" | 108 sq. ft | Yes |
| 4 | Living Room | 16'7" x 16'3" | 246 sq. ft | Yes |
| 5 | Dining Area | 8'9" x 14'6" | 120 sq. ft | Yes |
| 6 | Screened Porch | 19'1" x 9'9" | 183 sq. ft | No |
| 7 | Kitchen | 10'5" x 11'3" | 112 sq. ft | Yes |
| 8 | Hall | 4'11" x 9'9" | 34 sq. ft | Yes |
| 9 | Bedroom | 9'5" x 10'5" | 99 sq. ft | Yes |
| 10 | Foyer | 12'3" x 3'10" | 47 sq. ft | Yes |
| 11 | W.I.C. | 7'5" x 5'7" | 41 sq. ft | Yes |

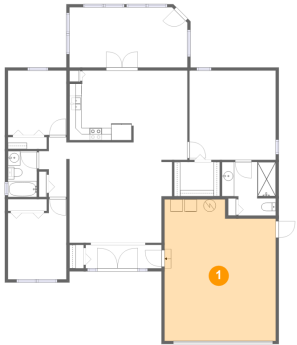
Home report

1455 Coastal Place, Willow Wood Village, Dunedin, Pinellas
County, Florida, United States, 34698

| # | | Max Dimensions | sqft | Included |
|----|-----------------|----------------|------------|----------|
| 12 | Primary Bedroom | 14'0" x 14'5" | 202 sq. ft | Yes |
| 13 | Bath | 8'9" x 8'8" | 66 sq. ft | Yes |

1455 Coastal Place, Willow Wood Village, Dunedin, Pinellas
County, Florida, United States, 34698

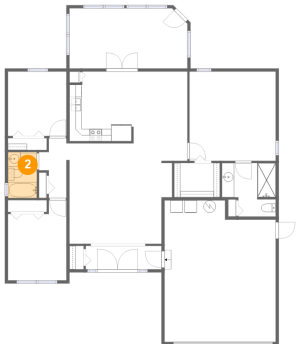
1 Floor 1 - Garage



Max Dimensions: 18'0" x 22'11"
Calculated Area: 387 sq. ft
Included: No

Heated: No
Finished: No
Enclosed: Yes
Contiguous: Yes
Permitted: Yes
Wet space: No
Addition: No
Conversion: No

2 Floor 1 - Bath

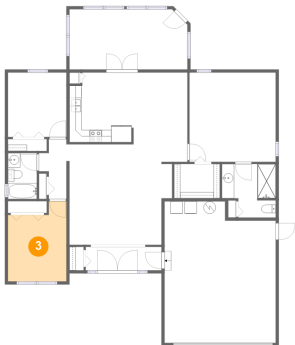


Max Dimensions: 4'8" x 7'5"
Calculated Area: 35 sq. ft
Included: Yes

Heated: Yes
Finished: Yes
Enclosed: Yes
Contiguous: Yes
Permitted: Yes
Wet space: Yes
Addition: No
Conversion: No

1455 Coastal Place, Willow Wood Village, Dunedin, Pinellas
County, Florida, United States, 34698

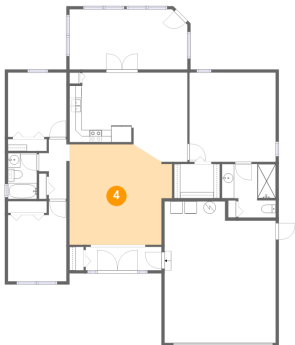
3 Floor 1 - Bedroom



Max Dimensions: 9'5" x 13'0"
Calculated Area: 108 sq. ft
Included: Yes

Heated: Yes
Finished: Yes
Enclosed: Yes
Contiguous: Yes
Permitted: Yes
Wet space: No
Addition: No
Conversion: No

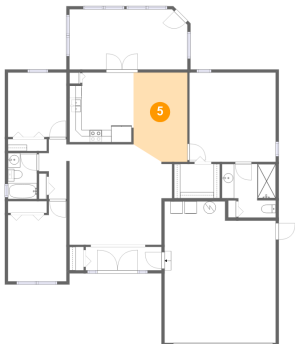
4 Floor 1 - Living Room



Max Dimensions: 16'7" x 16'3"
Calculated Area: 246 sq. ft
Included: Yes

Heated: Yes
Finished: Yes
Enclosed: Yes
Contiguous: Yes
Permitted: Yes
Wet space: No
Addition: No
Conversion: No

5 Floor 1 - Dining Area

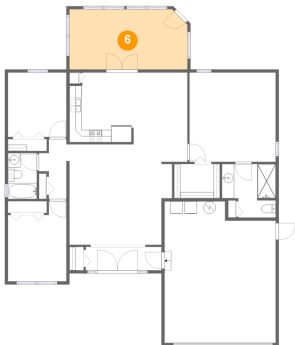


Max Dimensions: 8'9" x 14'6"
Calculated Area: 120 sq. ft
Included: Yes

Heated: Yes
Finished: Yes
Enclosed: Yes
Contiguous: Yes
Permitted: Yes
Wet space: No
Addition: No
Conversion: No

1455 Coastal Place, Willow Wood Village, Dunedin, Pinellas
County, Florida, United States, 34698

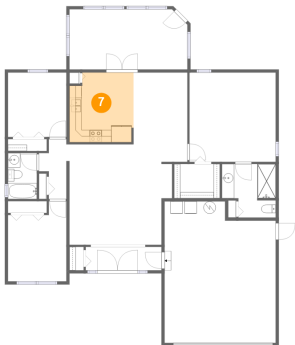
6 Floor 1 - Screened Porch



Max Dimensions: 19'1" x 9'9"
Calculated Area: 183 sq. ft
Included: No

Heated: No
Finished: Yes
Enclosed: No
Contiguous: Yes
Permitted: Yes
Wet space: No
Addition: No
Conversion: No

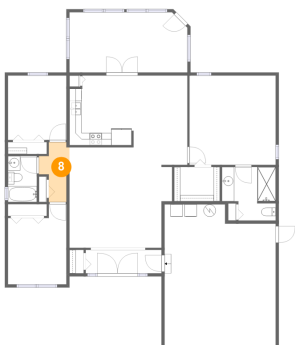
7 Floor 1 - Kitchen



Max Dimensions: 10'5" x 11'3"
Calculated Area: 112 sq. ft
Included: Yes

Heated: Yes
Finished: Yes
Enclosed: Yes
Contiguous: Yes
Permitted: Yes
Wet space: No
Addition: No
Conversion: No

8 Floor 1 - Hall

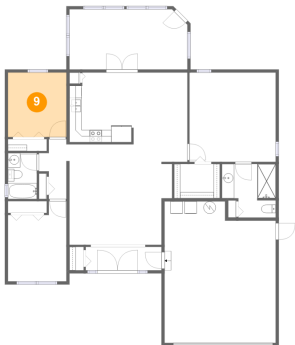


Max Dimensions: 4'11" x 9'9"
Calculated Area: 34 sq. ft
Included: Yes

Heated: Yes
Finished: Yes
Enclosed: Yes
Contiguous: Yes
Permitted: Yes
Wet space: No
Addition: No
Conversion: No

1455 Coastal Place, Willow Wood Village, Dunedin, Pinellas
County, Florida, United States, 34698

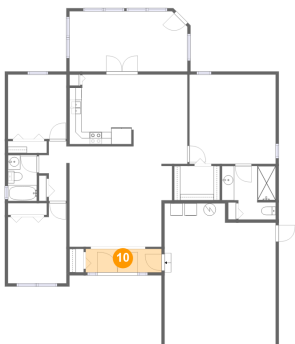
9 Floor 1 - Bedroom



Max Dimensions: 9'5" x 10'5"
Calculated Area: 99 sq. ft
Included: Yes

Heated: Yes
Finished: Yes
Enclosed: Yes
Contiguous: Yes
Permitted: Yes
Wet space: No
Addition: No
Conversion: No

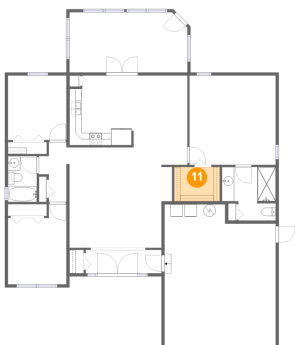
10 Floor 1 - Foyer



Max Dimensions: 12'3" x 3'10"
Calculated Area: 47 sq. ft
Included: Yes

Heated: Yes
Finished: Yes
Enclosed: Yes
Contiguous: Yes
Permitted: Yes
Wet space: No
Addition: No
Conversion: No

11 Floor 1 - W.I.C.

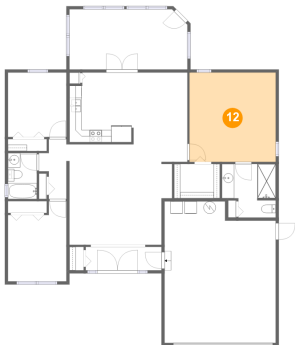


Max Dimensions: 7'5" x 5'7"
Calculated Area: 41 sq. ft
Included: Yes

Heated: Yes
Finished: Yes
Enclosed: Yes
Contiguous: Yes
Permitted: Yes
Wet space: No
Addition: No
Conversion: No

1455 Coastal Place, Willow Wood Village, Dunedin, Pinellas
County, Florida, United States, 34698

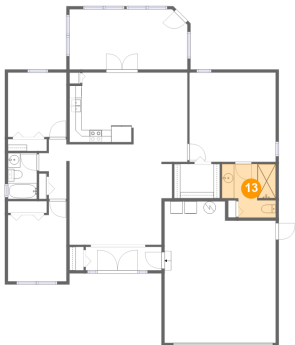
12 Floor 1 - Primary Bedroom



Max Dimensions: 14'0" x 14'5"
Calculated Area: 202 sq. ft
Included: Yes

Heated: Yes
Finished: Yes
Enclosed: Yes
Contiguous: Yes
Permitted: Yes
Wet space: No
Addition: No
Conversion: No

13 Floor 1 - Bath



Max Dimensions: 8'9" x 8'8"
Calculated Area: 66 sq. ft
Included: Yes

Heated: Yes
Finished: Yes
Enclosed: Yes
Contiguous: Yes
Permitted: Yes
Wet space: Yes
Addition: No
Conversion: No