



Home report


561 Las Tablas Road, Templeton, San Luis Obispo County,  
California, United States, 93465




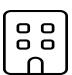
Property summary


**0** Garages


**2** Bedrooms

**2** Bathrooms

**0** Half baths

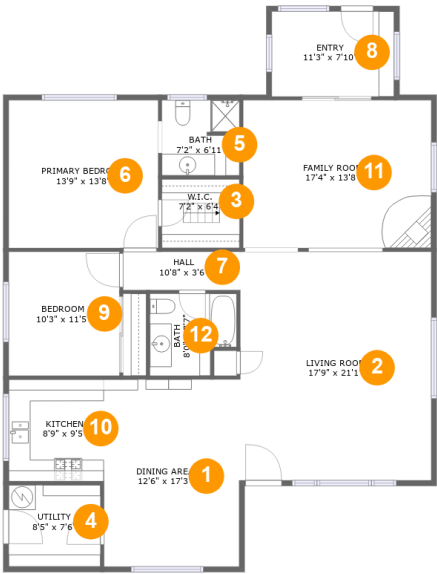
**2** Floors

**2,011** Gross living area sqft

**2,150** Total sqft

Home report

561 Las Tablas Road, Templeton, San Luis Obispo County,  
California, United States, 93465



Room dimensions

Floor 1 Total sqft: 1717    Living area: 1717

#		Dimensions	sqft	Counted as living area
1	Dining Area	12'6" x 17'3"	215 sq. ft	Yes
2	Living Room	17'9" x 21'1"	373 sq. ft	Yes
3	W.I.C.	7'2" x 6'4"	46 sq. ft	Yes
4	Utility	8'5" x 7'6"	64 sq. ft	Yes
5	Bath	7'2" x 6'11"	49 sq. ft	Yes
6	Primary Bedroom	13'9" x 13'8"	188 sq. ft	Yes
7	Hall	10'8" x 3'6"	38 sq. ft	Yes
8	Entry	11'3" x 7'10"	89 sq. ft	Yes
9	Bedroom	10'3" x 11'5"	117 sq. ft	Yes
10	Kitchen	8'9" x 9'5"	83 sq. ft	Yes
11	Family Room	17'4" x 13'8"	239 sq. ft	Yes

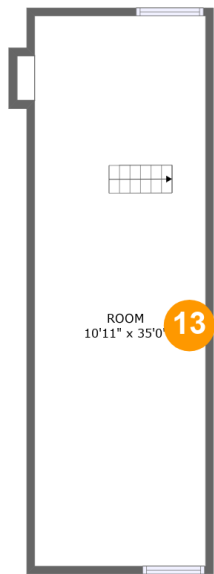
Home report

561 Las Tablas Road, Templeton, San Luis Obispo County,  
California, United States, 93465

#		Dimensions	sqft	Counted as living area
12	Bath	8'0" x 7'7"	54 sq. ft	Yes

Home report

561 Las Tablas Road, Templeton, San Luis Obispo County,  
California, United States, 93465



Room dimensions

Floor 2

Total sqft: 433    Living area: 294

#		Dimensions	sqft	Counted as living area
13	Room	10'11" x 35'0"	268 sq. ft	Yes

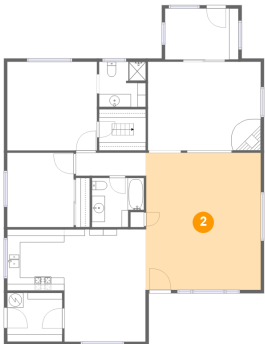
1 Floor 1 - Dining Area



Dimensions: 12'6" x 17'3"  
Area: 215 sq. ft  
Counted as living area: Yes

Heated: Yes  
Finished: Yes  
Enclosed: Yes  
Contiguous: Yes  
Permitted: Yes  
Wet space: No  
Addition: No  
Conversion: No

2 Floor 1 - Living Room



Dimensions: 17'9" x 21'1"  
Area: 373 sq. ft  
Counted as living area: Yes

Heated: Yes  
Finished: Yes  
Enclosed: Yes  
Contiguous: Yes  
Permitted: Yes  
Wet space: No  
Addition: No  
Conversion: No

561 Las Tablas Road, Templeton, San Luis Obispo County,  
California, United States, 93465

### 3 Floor 1 - W.I.C.



Dimensions: 7'2" x 6'4"  
Area: 46 sq. ft  
Counted as living area: Yes

Heated: Yes  
Finished: Yes  
Enclosed: Yes  
Contiguous: Yes  
Permitted: Yes  
Wet space: No  
Addition: No  
Conversion: No

### 4 Floor 1 - Utility



Dimensions: 8'5" x 7'6"  
Area: 64 sq. ft  
Counted as living area: Yes

Heated: Yes  
Finished: Yes  
Enclosed: Yes  
Contiguous: Yes  
Permitted: Yes  
Wet space: No  
Addition: No  
Conversion: No

### 5 Floor 1 - Bath



Dimensions: 7'2" x 6'11"  
Area: 49 sq. ft  
Counted as living area: Yes

Heated: Yes  
Finished: Yes  
Enclosed: Yes  
Contiguous: Yes  
Permitted: Yes  
Wet space: Yes  
Addition: No  
Conversion: No

561 Las Tablas Road, Templeton, San Luis Obispo County,  
California, United States, 93465

## 6 Floor 1 - Primary Bedroom



Dimensions: 13'9" x 13'8"  
Area: 188 sq. ft  
Counted as living area: Yes

Heated: Yes  
Finished: Yes  
Enclosed: Yes  
Contiguous: Yes  
Permitted: Yes  
Wet space: No  
Addition: No  
Conversion: No

## 7 Floor 1 - Hall



Dimensions: 10'8" x 3'6"  
Area: 38 sq. ft  
Counted as living area: Yes

Heated: Yes  
Finished: Yes  
Enclosed: Yes  
Contiguous: Yes  
Permitted: Yes  
Wet space: No  
Addition: No  
Conversion: No

## 8 Floor 1 - Entry



Dimensions: 11'3" x 7'10"  
Area: 89 sq. ft  
Counted as living area: Yes

Heated: Yes  
Finished: Yes  
Enclosed: Yes  
Contiguous: Yes  
Permitted: Yes  
Wet space: No  
Addition: No  
Conversion: No

561 Las Tablas Road, Templeton, San Luis Obispo County,  
California, United States, 93465

## 9 Floor 1 - Bedroom



Dimensions: 10'3" x 11'5"  
Area: 117 sq. ft  
Counted as living area: Yes

Heated: Yes  
Finished: Yes  
Enclosed: Yes  
Contiguous: Yes  
Permitted: Yes  
Wet space: No  
Addition: No  
Conversion: No

## 10 Floor 1 - Kitchen



Dimensions: 8'9" x 9'5"  
Area: 83 sq. ft  
Counted as living area: Yes

Heated: Yes  
Finished: Yes  
Enclosed: Yes  
Contiguous: Yes  
Permitted: Yes  
Wet space: No  
Addition: No  
Conversion: No

## 11 Floor 1 - Family Room



Dimensions: 17'4" x 13'8"  
Area: 239 sq. ft  
Counted as living area: Yes

Heated: Yes  
Finished: Yes  
Enclosed: Yes  
Contiguous: Yes  
Permitted: Yes  
Wet space: No  
Addition: No  
Conversion: No



561 Las Tablas Road, Templeton, San Luis Obispo County,  
California, United States, 93465

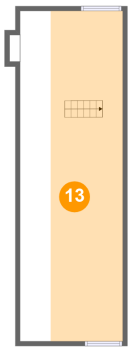
12 Floor 1 - Bath



Dimensions: 8'0" x 7'7"  
Area: 54 sq. ft  
Counted as living area: Yes

Heated: Yes  
Finished: Yes  
Enclosed: Yes  
Contiguous: Yes  
Permitted: Yes  
Wet space: Yes  
Addition: No  
Conversion: No

13 Floor 2 - Room



Dimensions: 10'11" x 35'0"  
Area: 268 sq. ft  
Counted as living area: Yes

Heated: Yes  
Finished: Yes  
Enclosed: Yes  
Contiguous: Yes  
Permitted: Yes  
Wet space: No  
Addition: No  
Conversion: No