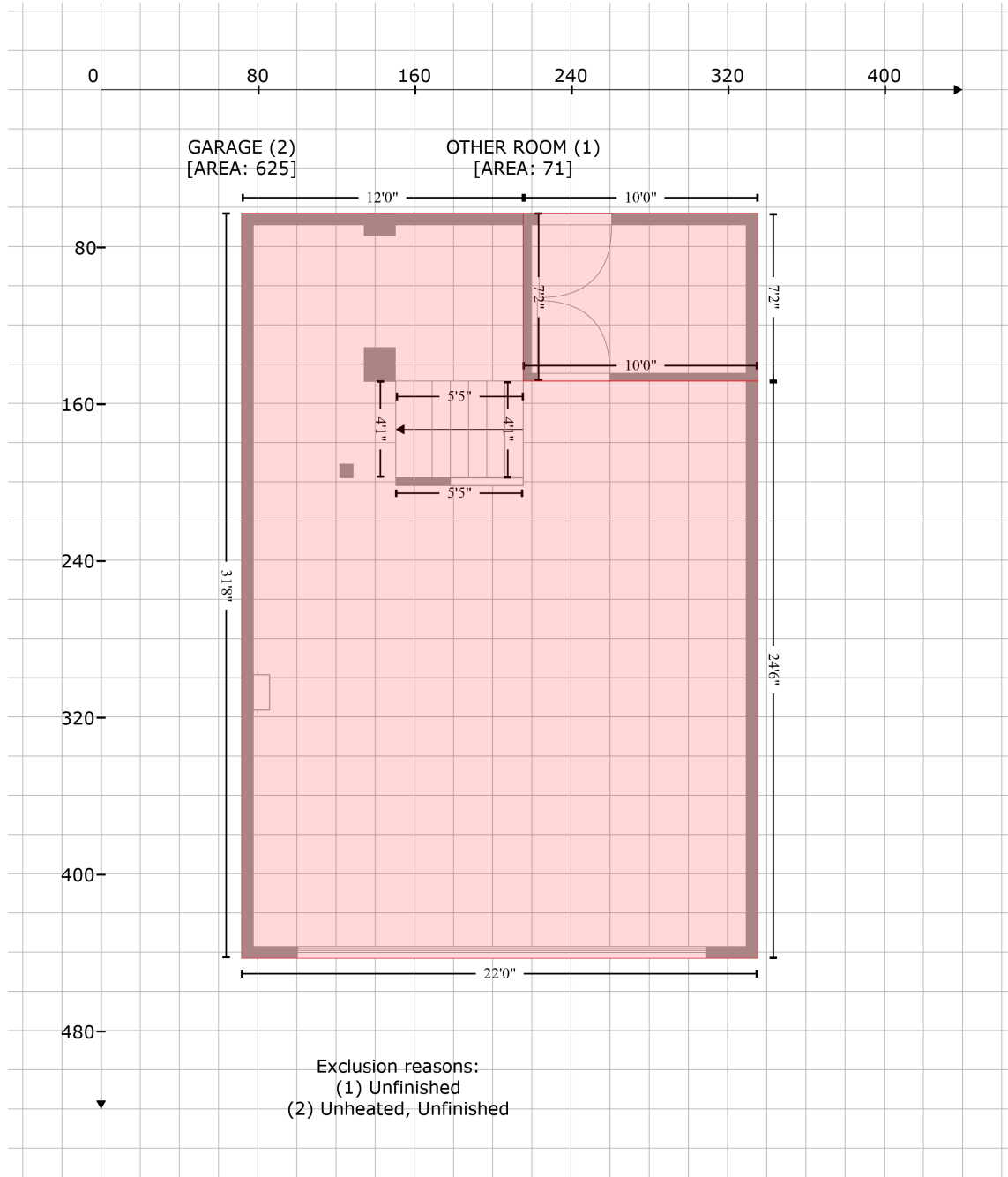


1610 Beach Trail, Indian Rocks Beach, Pinellas County, Florida, United States, 33785

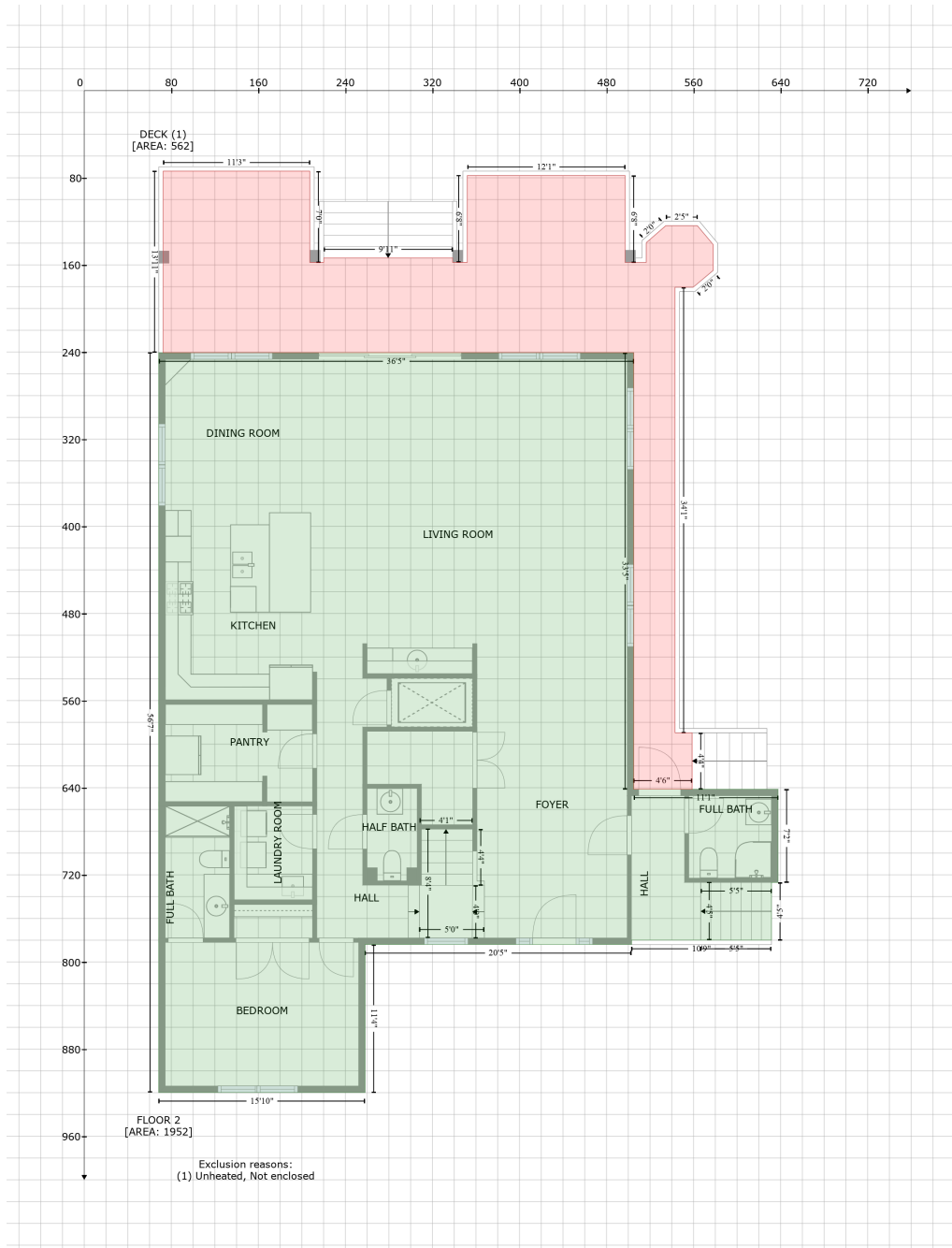
Gross Living Area: 4126 sq. ft



Space	Area (sq. ft)	Calculation <small>Coordinate Polygon Area Algorithm using inches</small>
OTHER ROOM (Non-living area)	71	$-((335.5 + 335.5) * (63 - 148.7) + (335.5 + 215.6) * (148.7 - 148.7) + (215.6 + 215.6) * (148.7 - 63) + (215.6 + 335.5) * (63 - 63)) * 0.5 * 0.00694$
GARAGE (Non-living area)	625	$-((215.6 + 215.6) * (63 - 148.7) + (215.6 + 335.5) * (148.7 - 148.7) + (335.5 + 335.5) * (148.7 - 443.1) + (335.5 + 71.8) * (443.1 - 443.1) + (71.8 + 71.8) * (443.1 - 63) + (71.8 + 215.6) * (63 - 63)) * 0.5 * 0.00694$

1610 Beach Trail, Indian Rocks Beach, Pinellas County, Florida, United States, 33785

Gross Living Area: 4126 sq. ft



Space	Area (sq. ft)	Calculation
FLOOR 2 (Living area)	1952	Coordinate Polygon Area Algorithm using inches $-((505 + 505) * (240.6 - 641.4) + (505 + 637.6) * (641.4 - 641.4) + (637.6 + 637.6) * (641.4 - 727) + (637.6 + 631.6) * (727 - 727) + (631.6 + 631.6) * (727 - 780) + (631.6 + 503) * (780 - 780) + (503 + 503) * (780 - 784) + (503 + 258.1) * (784 - 784) + (258.1 + 258.1) * (784 - 919.8) + (258.1 + 68.4) * (919.8 - 919.8) + (68.4 + 68.4) * (919.8 - 240.6) + (68.4 + 505) * (240.6 - 240.6)) * 0.5 * 0.00694$
DECK	562	$-((207.3 + 207.3) * (73.9 - 157.7) + (207.3 + 220.1) * (157.7 - 157.7) + (220.1 + 220.1) * (157.7 -$

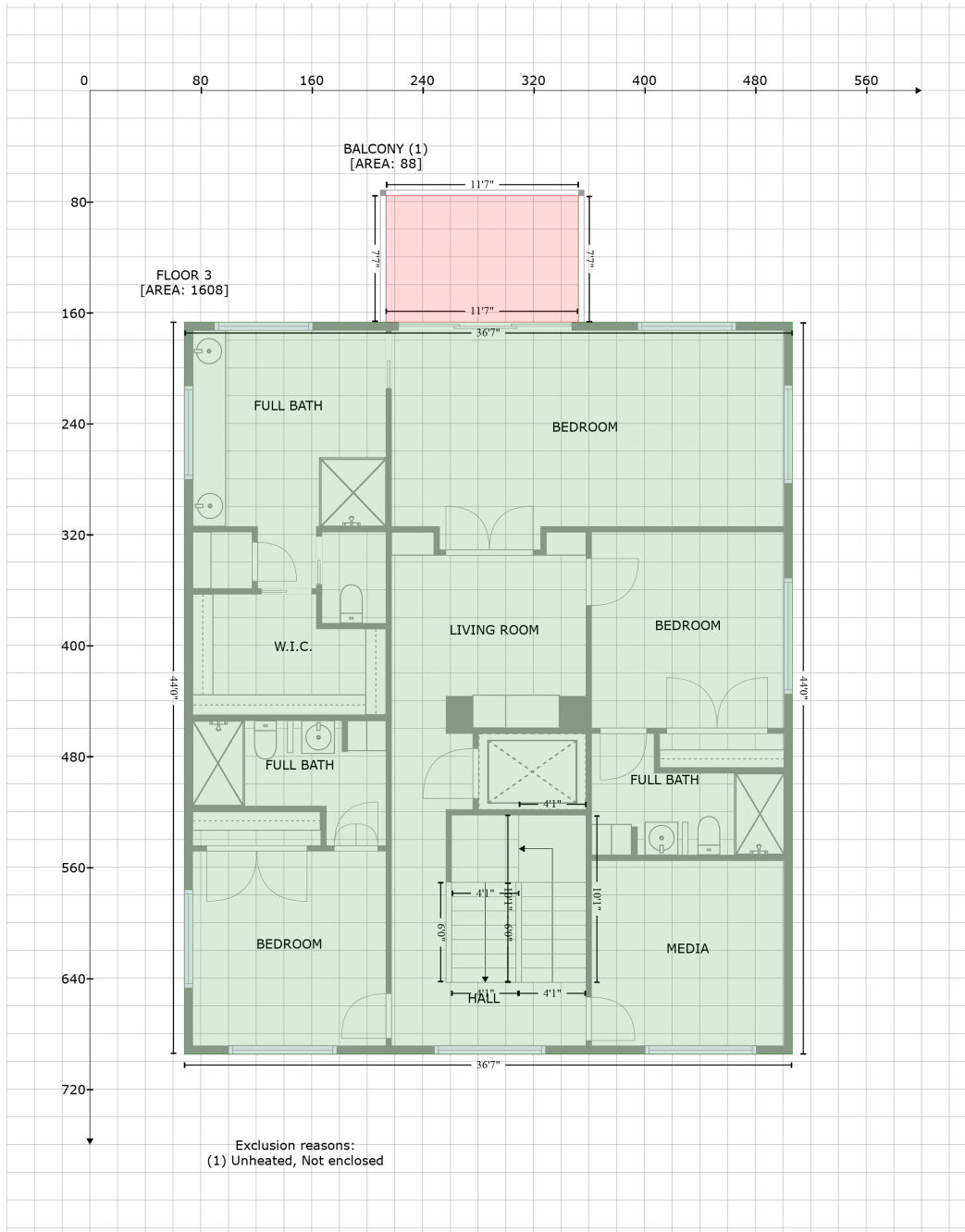
1610 Beach Trail, Indian Rocks Beach, Pinellas County, Florida, United States, 33785

Gross Living Area: 4126 sq. ft

Space	Area (sq. ft)	Calculation <small>Coordinate Polygon Area Algorithm using inches</small>
(Non-living area)		$153.6 + (220.1 + 338.6) * (153.6 - 153.6) + (338.6 + 338.6) * (153.6 - 157.7) + (338.6 + 352) * (157.7 - 157.7) + (352 + 352) * (157.7 - 77.9) + (352 + 497.1) * (77.9 - 77.9) + (497.1 + 497.1) * (77.9 - 157.7) + (497.1 + 516.5) * (157.7 - 157.7) + (516.5 + 516.5) * (157.7 - 139.6) + (516.5 + 534.5) * (139.6 - 123.9) + (534.5 + 563.5) * (123.9 - 123.9) + (563.5 + 578.2) * (123.9 - 141.5) + (578.2 + 578.2) * (141.5 - 165) + (578.2 + 559.6) * (165 - 180.5) + (559.6 + 543) * (180.5 - 180.5) + (543 + 543) * (180.5 - 589.6) + (543 + 558.7) * (589.6 - 589.6) + (558.7 + 558.7) * (589.6 - 641.3) + (558.7 + 505) * (641.3 - 641.4) + (505 + 505) * (641.4 - 240.6) + (505 + 72.5) * (240.6 - 240.6) + (72.5 + 72.5) * (240.6 - 73.9) + (72.5 + 207.3) * (73.9 - 73.9) * 0.5 * 0.00694$

1610 Beach Trail, Indian Rocks Beach, Pinellas County, Florida, United States, 33785

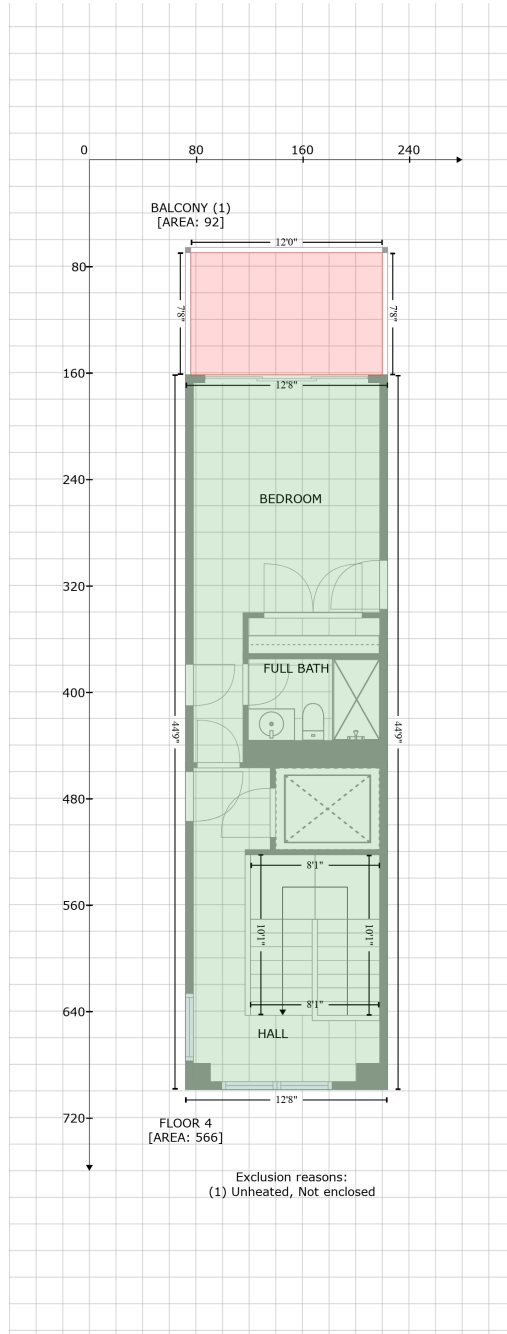
Gross Living Area: 4126 sq. ft



Space	Area (sq. ft)	Calculation <small>Coordinate Polygon Area Algorithm using inches</small>
FLOOR 3 (Living area)	1608	$-((506.8 + 506.8) * (167 - 694.9) + (506.8 + 68.2) * (694.9 - 694.9) + (68.2 + 68.2) * (694.9 - 167) + (68.2 + 506.8) * (167 - 167)) * 0.5 * 0.00694$
BALCONY (Non-living area)	88	$-((352.5 + 352.5) * (75.8 - 167) + (352.5 + 213.6) * (167 - 167) + (213.6 + 213.6) * (167 - 75.8) + (213.6 + 352.5) * (75.8 - 75.8)) * 0.5 * 0.00694$

1610 Beach Trail, Indian Rocks Beach, Pinellas County, Florida, United States, 33785

Gross Living Area: 4126 sq. ft



Space	Area (sq. ft)	Calculation <small>Coordinate Polygon Area Algorithm using inches</small>
FLOOR 4 (Living area)	566	$-((224 + 224) * (161.7 - 699) + (224 + 72.2) * (699 - 699) + (72.2 + 72.2) * (699 - 161.7) + (72.2 + 224) * (161.7 - 161.7)) * 0.5 + 0.00694$
BALCONY (Non-living area)	92	$-((220 + 220) * (70 - 161.7) + (220 + 76.2) * (161.7 - 161.7) + (76.2 + 76.2) * (161.7 - 70) + (76.2 + 220) * (70 - 70)) * 0.5 + 0.00694$