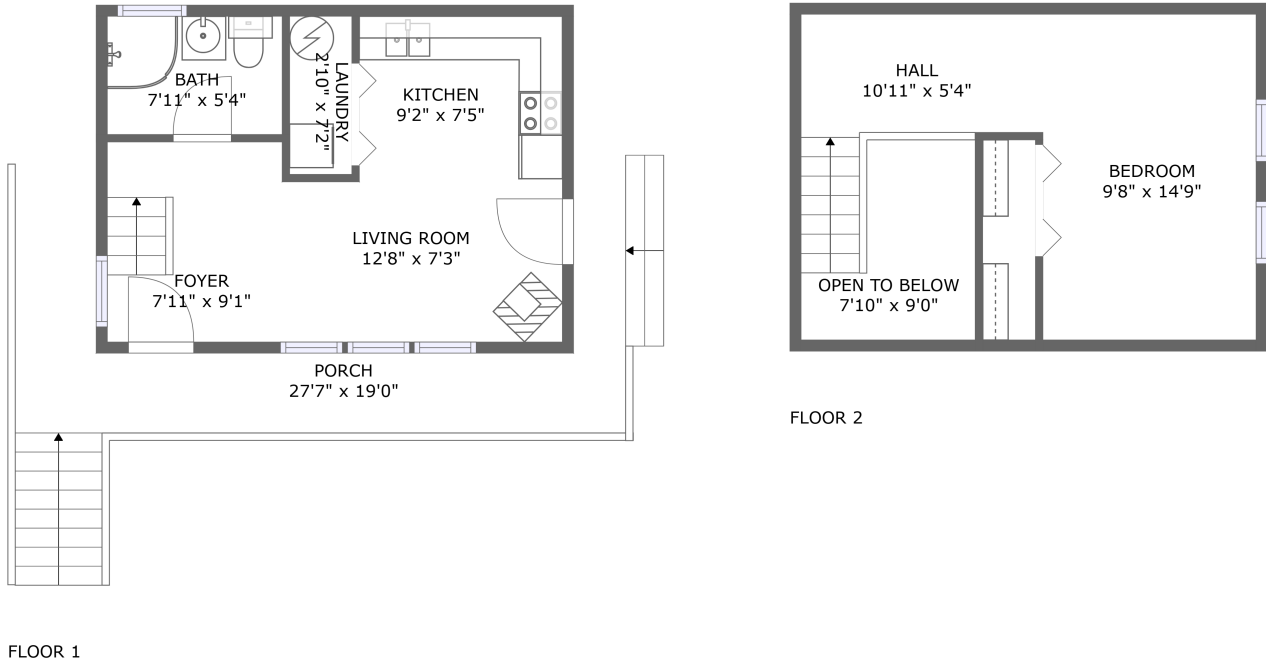


13555 Porcupine Pass, Lava Hot Springs, Bannock County, Idaho, United States, 83246

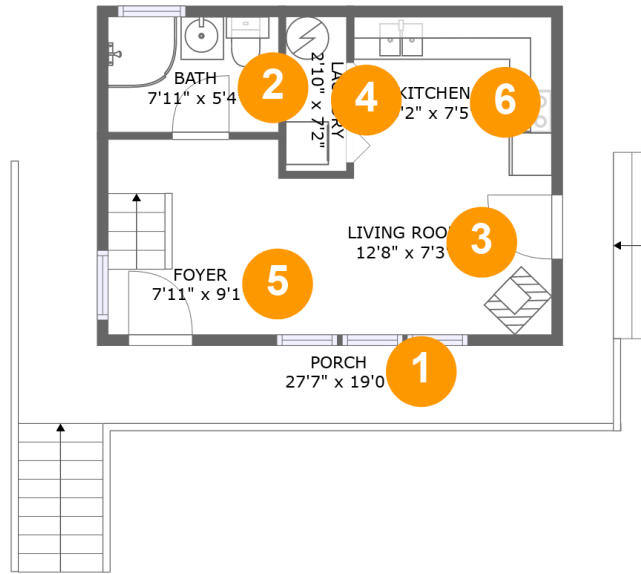


Property Summary

0 garages **1** bedrooms **1** bathrooms **0** half baths

2 floors **530** Gross Living Area sqft **884** total sqft

**13555 Porcupine Pass, Lava Hot Springs,
Bannock County, Idaho, United States, 83246**



Room Dimensions

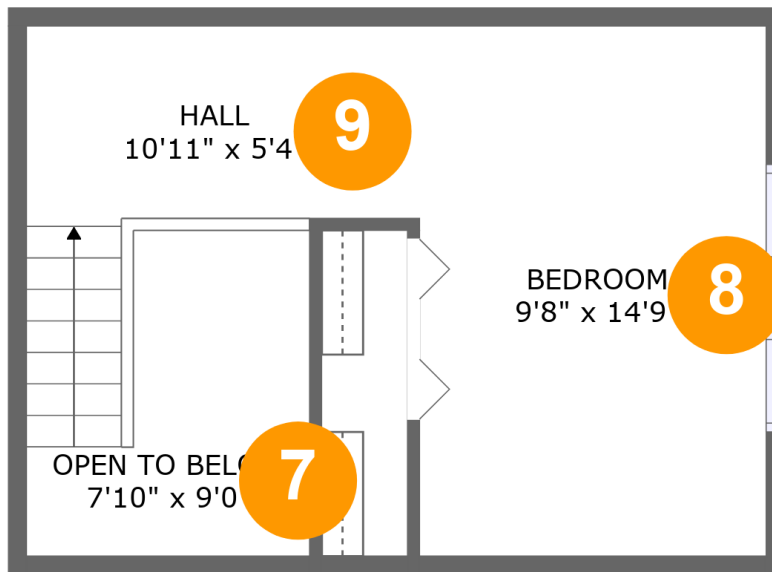
Floor 1

Total sqft: 545

Living area: 339

#	Room name	Dimensions	Area (sqft)	Counted as Living Area
1	Porch	27'7" x 19'0"	206 sq. ft	No
2	Bath	7'11" x 5'4"	42 sq. ft	Yes
3	Living Room	12'8" x 7'3"	92 sq. ft	Yes
4	Laundry	2'10" x 7'2"	20 sq. ft	Yes
5	Foyer	7'11" x 9'1"	72 sq. ft	Yes
6	Kitchen	9'2" x 7'5"	69 sq. ft	Yes

**13555 Porcupine Pass, Lava Hot Springs,
Bannock County, Idaho, United States, 83246**



Room Dimensions

Floor 2

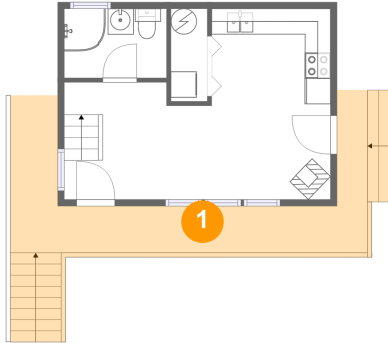
Total sqft: 339

Living area: 191

#	Room name	Dimensions	Area (sqft)	Counted as Living Area
7	Open To Below	7'10" x 9'0"	53 sq. ft	No
8	Bedroom	9'8" x 14'9"	102 sq. ft	Yes
9	Hall	10'11" x 5'4"	56 sq. ft	Yes

13555 Porcupine Pass, Lava Hot Springs, Bannock County, Idaho, United States, 83246

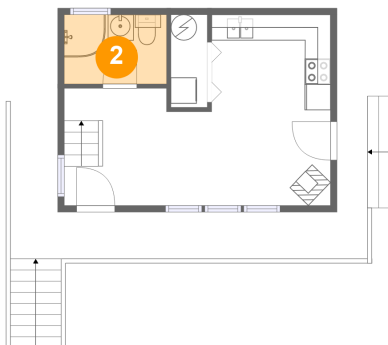
1 Floor 1 - Porch



Dimensions: 27'7" x 19'0"
Area: 206 sq. ft
Counted as Living Area: No

Heated: No
Finished: Yes
Enclosed: No
Contiguous: Yes
Permitted: Yes
Wet Space: No
Addition: No
Conversion: No

2 Floor 1 - Bath

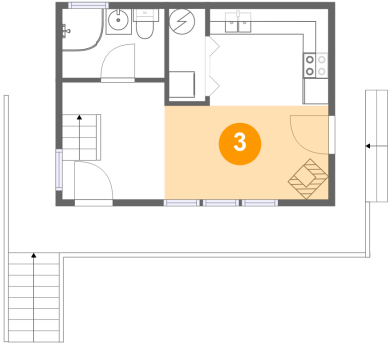


Dimensions: 7'11" x 5'4"
Area: 42 sq. ft
Counted as Living Area:
Yes

Heated: Yes
Finished: Yes
Enclosed: Yes
Contiguous:
Yes
Permitted: Yes
Wet Space: Yes
Addition: No
Conversion: No

13555 Porcupine Pass, Lava Hot Springs, Bannock County, Idaho, United States, 83246

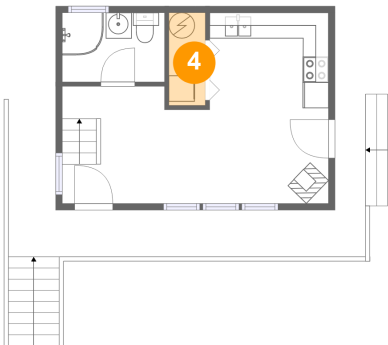
3 Floor 1 - Living Room



Dimensions: 12'8" x 7'3"
Area: 92 sq. ft
Counted as Living Area:
Yes

Heated: Yes
Finished: Yes
Enclosed: Yes
Contiguous:
Yes
Permitted: Yes
Wet Space: No
Addition: No
Conversion: No

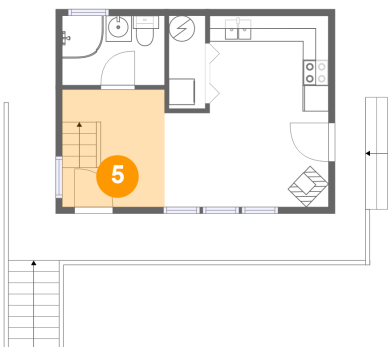
4 Floor 1 - Laundry



Dimensions: 2'10" x 7'2"
Area: 20 sq. ft
Counted as Living Area:
Yes

Heated: Yes
Finished: Yes
Enclosed: Yes
Contiguous:
Yes
Permitted: Yes
Wet Space: No
Addition: No
Conversion: No

5 Floor 1 - Foyer

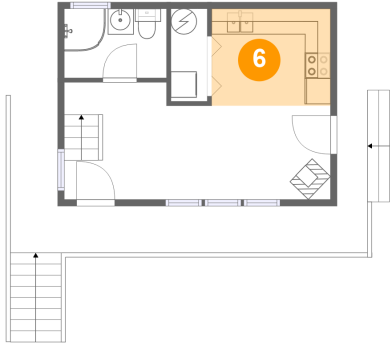


Dimensions: 7'11" x 9'1"
Area: 72 sq. ft
Counted as Living Area:
Yes

Heated: Yes
Finished: Yes
Enclosed: Yes
Contiguous:
Yes
Permitted: Yes
Wet Space: No
Addition: No
Conversion: No

**13555 Porcupine Pass, Lava Hot Springs,
Bannock County, Idaho, United States, 83246**

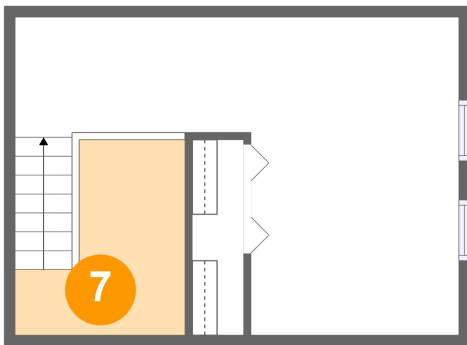
6 Floor 1 - Kitchen



Dimensions: 9'2" x 7'5"
Area: 69 sq. ft
Counted as Living Area:
Yes

Heated: Yes
Finished: Yes
Enclosed: Yes
Contiguous:
Yes
Permitted: Yes
Wet Space: No
Addition: No
Conversion: No

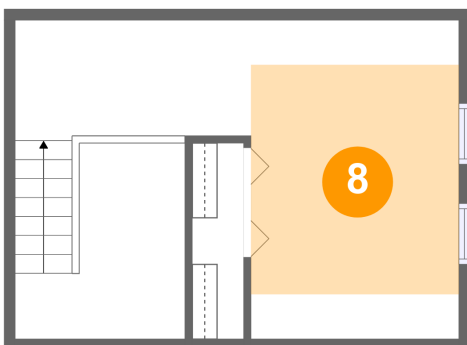
7 Floor 2 - Open To Below



Dimensions: 7'10" x 9'0"
Area: 53 sq. ft
Counted as Living Area: No

Heated: No
Finished: No
Enclosed: No
Contiguous: Yes
Permitted: No
Wet Space: No
Addition: No
Conversion: No

8 Floor 2 - Bedroom

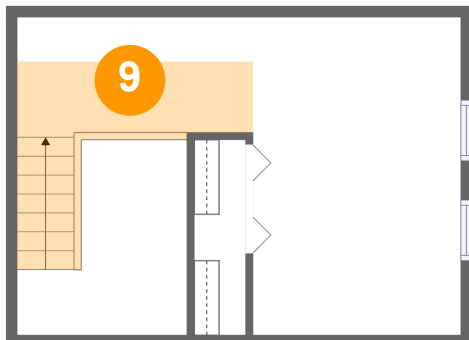


Dimensions: 9'8" x 14'9"
Area: 102 sq. ft
Counted as Living Area:
Yes

Heated: Yes
Finished: Yes
Enclosed: Yes
Contiguous:
Yes
Permitted: Yes
Wet Space: No
Addition: No
Conversion: No

**13555 Porcupine Pass, Lava Hot Springs,
Bannock County, Idaho, United States, 83246**

9 Floor 2 - Hall



Dimensions: 10'11" x 5'4"
Area: 56 sq. ft
Counted as Living Area:
Yes

Heated: Yes
Finished: Yes
Enclosed: Yes
Contiguous:
Yes
Permitted: Yes
Wet Space: No
Addition: No
Conversion: No