




Property summary




2
Garages




5
Bedrooms




5
Bathrooms




1
Half baths



3
Floors

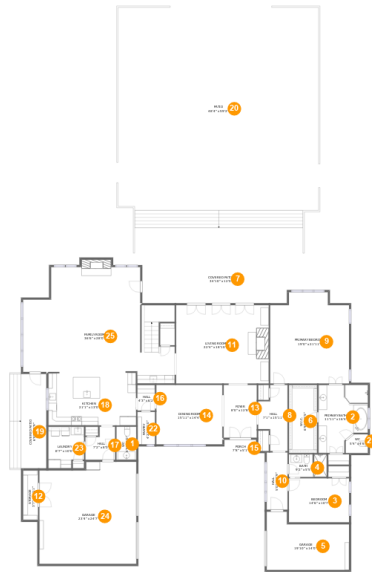


5,758
Gross living
area sqft



10,099
Total sqft

**272 South Perkins Road, Memphis, Shelby County,
Tennessee, United States, 38117**



Room dimensions

Floor 1

Total sqft: 7776 Living area: 3435

#		Dimensions	sqft	Counted as living area
1	WC	4'9" x 8'0"	38 sq. ft	Yes
2	Primary Bath	11'11" x 16'4"	170 sq. ft	Yes
3	Bedroom	14'6" x 10'7"	153 sq. ft	Yes
4	Bath	9'2" x 5'5"	49 sq. ft	Yes
5	Garage	19'10" x 14'0"	233 sq. ft	No
6	W.I.C.	6'9" x 16'5"	111 sq. ft	Yes
7	Covered Patio	34'10" x 12'0"	418 sq. ft	No
8	Hall	7'1" x 15'11"	86 sq. ft	Yes
9	Primary Bedroom	19'0" x 21'11"	388 sq. ft	Yes
10	Hall	5'0" x 13'9"	69 sq. ft	Yes
11	Living Room	22'4" x 18'10"	421 sq. ft	Yes

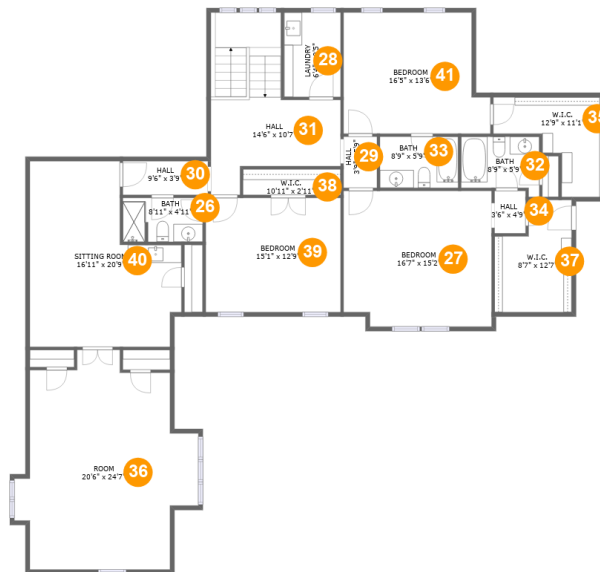
Scan captured on Tue, 11 Mar 2025 01:56:01 GMT

Information is calculated by Cubicasa technology deemed highly reliable but not guaranteed.

**272 South Perkins Road, Memphis, Shelby County,
Tennessee, United States, 38117**

#		Dimensions	sqft	Counted as living area
12	Storage	3'7" x 11'11"	43 sq. ft	No
13	Foyer	8'0" x 12'8"	101 sq. ft	Yes
14	Dining Room	15'11" x 14'4"	228 sq. ft	Yes
15	Porch	7'8" x 5'1"	36 sq. ft	No
16	Hall	4'3" x 6'2"	26 sq. ft	Yes
17	Hall	7'2" x 8'0"	49 sq. ft	Yes
18	Kitchen	21'1" x 13'0"	273 sq. ft	Yes
19	Covered Patio	6'0" x 22'9"	200 sq. ft	No
20	Patio	48'4" x 59'2"	2779 sq. ft	No
21	WC	5'4" x 4'6"	22 sq. ft	Yes
22	Pantry	4'2" x 7'10"	33 sq. ft	Yes
23	Laundry	8'7" x 10'0"	80 sq. ft	Yes
24	Garage	23'4" x 24'7"	551 sq. ft	No
25	Family Room	36'6" x 28'0"	802 sq. ft	Yes

272 South Perkins Road, Memphis, Shelby County,
Tennessee, United States, 38117



Room dimensions

Floor 2

Total sqft: 2276 Living area: 2276

#		Dimensions	sqft	Counted as living area
26	Bath	8'11" x 4'11"	44 sq. ft	Yes
27	Bedroom	16'7" x 15'2"	247 sq. ft	Yes
28	Laundry	6'4" x 9'5"	60 sq. ft	Yes
29	Hall	3'9" x 5'9"	21 sq. ft	Yes
30	Hall	9'6" x 3'9"	36 sq. ft	Yes
31	Hall	14'6" x 10'7"	195 sq. ft	Yes
32	Bath	8'9" x 5'9"	51 sq. ft	Yes
33	Bath	8'9" x 5'9"	50 sq. ft	Yes
34	Hall	3'6" x 4'9"	16 sq. ft	Yes
35	W.I.C.	12'9" x 11'1"	93 sq. ft	Yes
36	Room	20'6" x 24'7"	393 sq. ft	Yes

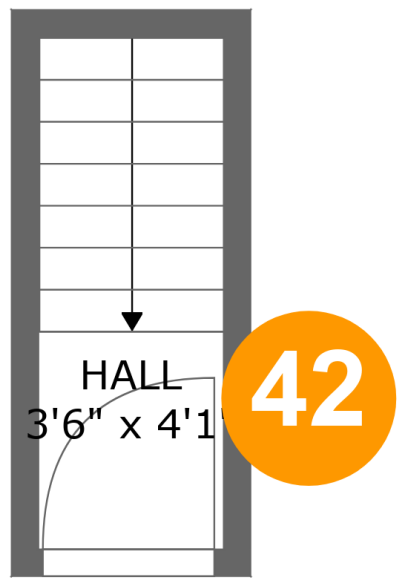
Scan captured on Tue, 11 Mar 2025 01:56:01 GMT

Information is calculated by Cubicasa technology deemed highly reliable but not guaranteed.

**272 South Perkins Road, Memphis, Shelby County,
Tennessee, United States, 38117**

#		Dimensions	sqft	Counted as living area
37	W.I.C.	8'7" x 12'7"	93 sq. ft	Yes
38	W.I.C.	10'11" x 2'11"	31 sq. ft	Yes
39	Bedroom	15'1" x 12'9"	193 sq. ft	Yes
40	Sitting Room	16'11" x 20'9"	283 sq. ft	Yes
41	Bedroom	16'5" x 13'6"	203 sq. ft	Yes

272 South Perkins Road, Memphis, Shelby County,
Tennessee, United States, 38117



Room dimensions

Floor 3

Total sqft: 47 Living area: 47

#		Dimensions	sqft	Counted as living area
42	Hall	3'6" x 4'1"	33 sq. ft	Yes

272 South Perkins Road, Memphis, Shelby County,
Tennessee, United States, 38117

1 Floor 1 - WC



Dimensions: 4'9" x 8'0"
Area: 38 sq. ft
Counted as living area: Yes

Heated: Yes
Finished: Yes
Enclosed: Yes
Contiguous: Yes
Permitted: Yes
Wet space: Yes
Addition: No
Conversion: No

2 Floor 1 - Primary Bath



Dimensions: 11'11" x 16'4"
Area: 170 sq. ft
Counted as living area: Yes

Heated: Yes
Finished: Yes
Enclosed: Yes
Contiguous: Yes
Permitted: Yes
Wet space: Yes
Addition: No
Conversion: No

272 South Perkins Road, Memphis, Shelby County,
Tennessee, United States, 38117

3 Floor 1 - Bedroom



Dimensions: 14'6" x 10'7"
Area: 153 sq. ft
Counted as living area: Yes

Heated: Yes
Finished: Yes
Enclosed: Yes
Contiguous: Yes
Permitted: Yes
Wet space: No
Addition: No
Conversion: No

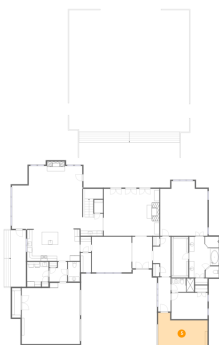
4 Floor 1 - Bath



Dimensions: 9'2" x 5'5"
Area: 49 sq. ft
Counted as living area: Yes

Heated: Yes
Finished: Yes
Enclosed: Yes
Contiguous: Yes
Permitted: Yes
Wet space: Yes
Addition: No
Conversion: No

5 Floor 1 - Garage



Dimensions: 19'10" x 14'0"
Area: 233 sq. ft
Counted as living area: No

Heated: No
Finished: No
Enclosed: Yes
Contiguous: Yes
Permitted: Yes
Wet space: No
Addition: No
Conversion: No

272 South Perkins Road, Memphis, Shelby County,
Tennessee, United States, 38117

6 Floor 1 - W.I.C.



Dimensions: 6'9" x 16'5"
Area: 111 sq. ft
Counted as living area: Yes

Heated: Yes
Finished: Yes
Enclosed: Yes
Contiguous: Yes
Permitted: Yes
Wet space: No
Addition: No
Conversion: No

7 Floor 1 - Covered Patio



Dimensions: 34'10" x 12'0"
Area: 418 sq. ft
Counted as living area: No

Heated: No
Finished: Yes
Enclosed: No
Contiguous: Yes
Permitted: Yes
Wet space: No
Addition: No
Conversion: No

8 Floor 1 - Hall

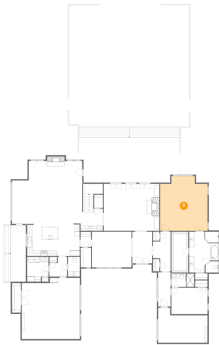


Dimensions: 7'1" x 15'11"
Area: 86 sq. ft
Counted as living area: Yes

Heated: Yes
Finished: Yes
Enclosed: Yes
Contiguous: Yes
Permitted: Yes
Wet space: No
Addition: No
Conversion: No

272 South Perkins Road, Memphis, Shelby County,
Tennessee, United States, 38117

9 Floor 1 - Primary Bedroom



Dimensions: 19'0" x 21'11"
Area: 388 sq. ft
Counted as living area: Yes

Heated: Yes
Finished: Yes
Enclosed: Yes
Contiguous: Yes
Permitted: Yes
Wet space: No
Addition: No
Conversion: No

10 Floor 1 - Hall



Dimensions: 5'0" x 13'9"
Area: 69 sq. ft
Counted as living area: Yes

Heated: Yes
Finished: Yes
Enclosed: Yes
Contiguous: Yes
Permitted: Yes
Wet space: No
Addition: No
Conversion: No

11 Floor 1 - Living Room

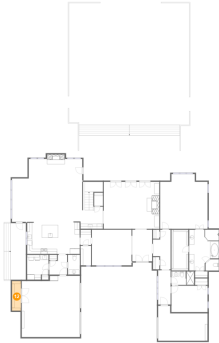


Dimensions: 22'4" x 18'10"
Area: 421 sq. ft
Counted as living area: Yes

Heated: Yes
Finished: Yes
Enclosed: Yes
Contiguous: Yes
Permitted: Yes
Wet space: No
Addition: No
Conversion: No

272 South Perkins Road, Memphis, Shelby County,
Tennessee, United States, 38117

12 Floor 1 - Storage



Dimensions: 3'7" x 11'11"
Area: 43 sq. ft
Counted as living area: No

Heated: No
Finished: No
Enclosed: No
Contiguous: Yes
Permitted: Yes
Wet space: No
Addition: No
Conversion: No

13 Floor 1 - Foyer



Dimensions: 8'0" x 12'8"
Area: 101 sq. ft
Counted as living area: Yes

Heated: Yes
Finished: Yes
Enclosed: Yes
Contiguous: Yes
Permitted: Yes
Wet space: No
Addition: No
Conversion: No

14 Floor 1 - Dining Room



Dimensions: 15'11" x 14'4"
Area: 228 sq. ft
Counted as living area: Yes

Heated: Yes
Finished: Yes
Enclosed: Yes
Contiguous: Yes
Permitted: Yes
Wet space: No
Addition: No
Conversion: No

272 South Perkins Road, Memphis, Shelby County,
Tennessee, United States, 38117

15 Floor 1 - Porch



Dimensions: 7'8" x 5'1"
Area: 36 sq. ft
Counted as living area: No

Heated: No
Finished: Yes
Enclosed: No
Contiguous: Yes
Permitted: Yes
Wet space: No
Addition: No
Conversion: No

16 Floor 1 - Hall



Dimensions: 4'3" x 6'2"
Area: 26 sq. ft
Counted as living area: Yes

Heated: Yes
Finished: Yes
Enclosed: Yes
Contiguous: Yes
Permitted: Yes
Wet space: No
Addition: No
Conversion: No

17 Floor 1 - Hall



Dimensions: 7'2" x 8'0"
Area: 49 sq. ft
Counted as living area: Yes

Heated: Yes
Finished: Yes
Enclosed: Yes
Contiguous: Yes
Permitted: Yes
Wet space: No
Addition: No
Conversion: No

272 South Perkins Road, Memphis, Shelby County,
Tennessee, United States, 38117

18 Floor 1 - Kitchen



Dimensions: 21'1" x 13'0"
Area: 273 sq. ft
Counted as living area: Yes

Heated: Yes
Finished: Yes
Enclosed: Yes
Contiguous: Yes
Permitted: Yes
Wet space: No
Addition: No
Conversion: No

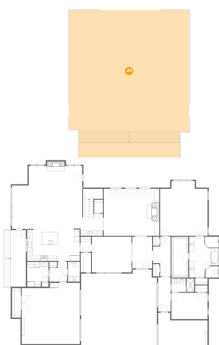
19 Floor 1 - Covered Patio



Dimensions: 6'0" x 22'9"
Area: 200 sq. ft
Counted as living area: No

Heated: No
Finished: Yes
Enclosed: No
Contiguous: Yes
Permitted: Yes
Wet space: No
Addition: No
Conversion: No

20 Floor 1 - Patio



Dimensions: 48'4" x 59'2"
Area: 2779 sq. ft
Counted as living area: No

Heated: No
Finished: Yes
Enclosed: No
Contiguous: Yes
Permitted: Yes
Wet space: No
Addition: No
Conversion: No

272 South Perkins Road, Memphis, Shelby County,
Tennessee, United States, 38117

21 Floor 1 - WC



Dimensions: 5'4" x 4'6"
Area: 22 sq. ft
Counted as living area: Yes

Heated: Yes
Finished: Yes
Enclosed: Yes
Contiguous: Yes
Permitted: Yes
Wet space: Yes
Addition: No
Conversion: No

22 Floor 1 - Pantry



Dimensions: 4'2" x 7'10"
Area: 33 sq. ft
Counted as living area: Yes

Heated: Yes
Finished: Yes
Enclosed: Yes
Contiguous: Yes
Permitted: Yes
Wet space: No
Addition: No
Conversion: No

23 Floor 1 - Laundry



Dimensions: 8'7" x 10'0"
Area: 80 sq. ft
Counted as living area: Yes

Heated: Yes
Finished: Yes
Enclosed: Yes
Contiguous: Yes
Permitted: Yes
Wet space: No
Addition: No
Conversion: No

272 South Perkins Road, Memphis, Shelby County,
Tennessee, United States, 38117

24 Floor 1 - Garage



Dimensions: 23'4" x 24'7"
Area: 551 sq. ft
Counted as living area: No

Heated: No
Finished: No
Enclosed: Yes
Contiguous: Yes
Permitted: Yes
Wet space: No
Addition: No
Conversion: No

25 Floor 1 - Family Room



Dimensions: 36'6" x 28'0"
Area: 802 sq. ft
Counted as living area: Yes

Heated: Yes
Finished: Yes
Enclosed: Yes
Contiguous: Yes
Permitted: Yes
Wet space: No
Addition: No
Conversion: No

26 Floor 2 - Bath

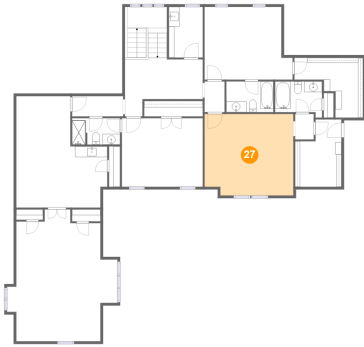


Dimensions: 8'11" x 4'11"
Area: 44 sq. ft
Counted as living area: Yes

Heated: Yes
Finished: Yes
Enclosed: Yes
Contiguous: Yes
Permitted: Yes
Wet space: Yes
Addition: No
Conversion: No

272 South Perkins Road, Memphis, Shelby County,
Tennessee, United States, 38117

27 Floor 2 - Bedroom



Dimensions: 16'7" x 15'2"
Area: 247 sq. ft
Counted as living area: Yes

Heated: Yes
Finished: Yes
Enclosed: Yes
Contiguous: Yes
Permitted: Yes
Wet space: No
Addition: No
Conversion: No

28 Floor 2 - Laundry



Dimensions: 6'4" x 9'5"
Area: 60 sq. ft
Counted as living area: Yes

Heated: Yes
Finished: Yes
Enclosed: Yes
Contiguous: Yes
Permitted: Yes
Wet space: No
Addition: No
Conversion: No

29 Floor 2 - Hall



Dimensions: 3'9" x 5'9"
Area: 21 sq. ft
Counted as living area: Yes

Heated: Yes
Finished: Yes
Enclosed: Yes
Contiguous: Yes
Permitted: Yes
Wet space: No
Addition: No
Conversion: No

272 South Perkins Road, Memphis, Shelby County,
Tennessee, United States, 38117

30 Floor 2 - Hall



Dimensions: 9'6" x 3'9"
Area: 36 sq. ft
Counted as living area: Yes

Heated: Yes
Finished: Yes
Enclosed: Yes
Contiguous: Yes
Permitted: Yes
Wet space: No
Addition: No
Conversion: No

31 Floor 2 - Hall



Dimensions: 14'6" x 10'7"
Area: 195 sq. ft
Counted as living area: Yes

Heated: Yes
Finished: Yes
Enclosed: Yes
Contiguous: Yes
Permitted: Yes
Wet space: No
Addition: No
Conversion: No

32 Floor 2 - Bath



Dimensions: 8'9" x 5'9"
Area: 51 sq. ft
Counted as living area: Yes

Heated: Yes
Finished: Yes
Enclosed: Yes
Contiguous: Yes
Permitted: Yes
Wet space: Yes
Addition: No
Conversion: No

272 South Perkins Road, Memphis, Shelby County,
Tennessee, United States, 38117

33 Floor 2 - Bath



Dimensions: 8'9" x 5'9"
Area: 50 sq. ft
Counted as living area: Yes

Heated: Yes
Finished: Yes
Enclosed: Yes
Contiguous: Yes
Permitted: Yes
Wet space: Yes
Addition: No
Conversion: No

34 Floor 2 - Hall



Dimensions: 3'6" x 4'9"
Area: 16 sq. ft
Counted as living area: Yes

Heated: Yes
Finished: Yes
Enclosed: Yes
Contiguous: Yes
Permitted: Yes
Wet space: No
Addition: No
Conversion: No

35 Floor 2 - W.I.C.

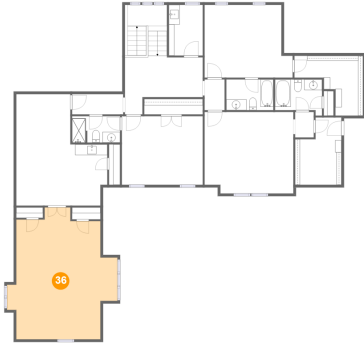


Dimensions: 12'9" x 11'1"
Area: 93 sq. ft
Counted as living area: Yes

Heated: Yes
Finished: Yes
Enclosed: Yes
Contiguous: Yes
Permitted: Yes
Wet space: No
Addition: No
Conversion: No

272 South Perkins Road, Memphis, Shelby County,
Tennessee, United States, 38117

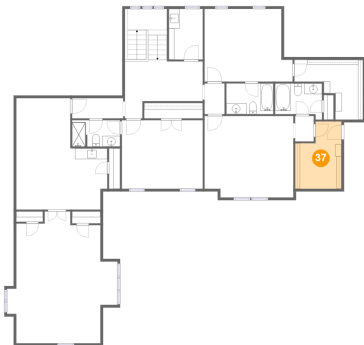
36 Floor 2 - Room



Dimensions: 20'6" x 24'7"
Area: 393 sq. ft
Counted as living area: Yes

Heated: Yes
Finished: Yes
Enclosed: Yes
Contiguous: Yes
Permitted: Yes
Wet space: No
Addition: No
Conversion: No

37 Floor 2 - W.I.C.



Dimensions: 8'7" x 12'7"
Area: 93 sq. ft
Counted as living area: Yes

Heated: Yes
Finished: Yes
Enclosed: Yes
Contiguous: Yes
Permitted: Yes
Wet space: No
Addition: No
Conversion: No

38 Floor 2 - W.I.C.



Dimensions: 10'11" x 2'11"
Area: 31 sq. ft
Counted as living area: Yes

Heated: Yes
Finished: Yes
Enclosed: Yes
Contiguous: Yes
Permitted: Yes
Wet space: No
Addition: No
Conversion: No

272 South Perkins Road, Memphis, Shelby County,
Tennessee, United States, 38117

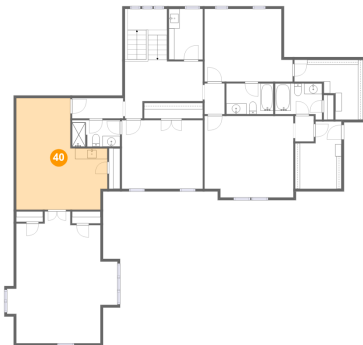
39 Floor 2 - Bedroom



Dimensions: 15'1" x 12'9"
Area: 193 sq. ft
Counted as living area: Yes

Heated: Yes
Finished: Yes
Enclosed: Yes
Contiguous: Yes
Permitted: Yes
Wet space: No
Addition: No
Conversion: No

40 Floor 2 - Sitting Room



Dimensions: 16'11" x 20'9"
Area: 283 sq. ft
Counted as living area: Yes

Heated: Yes
Finished: Yes
Enclosed: Yes
Contiguous: Yes
Permitted: Yes
Wet space: No
Addition: No
Conversion: No

41 Floor 2 - Bedroom

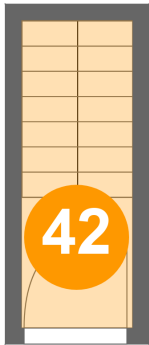


Dimensions: 16'5" x 13'6"
Area: 203 sq. ft
Counted as living area: Yes

Heated: Yes
Finished: Yes
Enclosed: Yes
Contiguous: Yes
Permitted: Yes
Wet space: No
Addition: No
Conversion: No

272 South Perkins Road, Memphis, Shelby County,
Tennessee, United States, 38117

42 Floor 3 - Hall



Dimensions: 3'6" x 4'1"
Area: 33 sq. ft
Counted as living area: Yes

Heated: Yes
Finished: Yes
Enclosed: Yes
Contiguous: Yes
Permitted: Yes
Wet space: No
Addition: No
Conversion: No