


5228 Essington Street, South Bend, St. Joseph County, Indiana, United States, 46614



Property summary


 **1** Garages

 **3** Bedrooms

 **2** Bathrooms

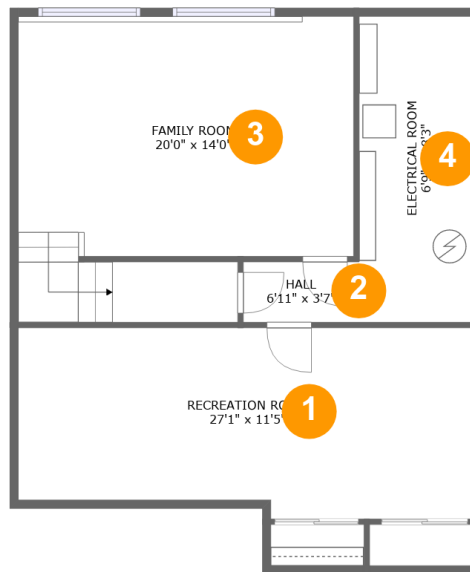
 **1** Half baths

 **3** Floors

 **2,457** Gross living area sqft

 **3,267** Total sqft

5228 Essington Street, South Bend, St. Joseph County, Indiana, United States, 46614



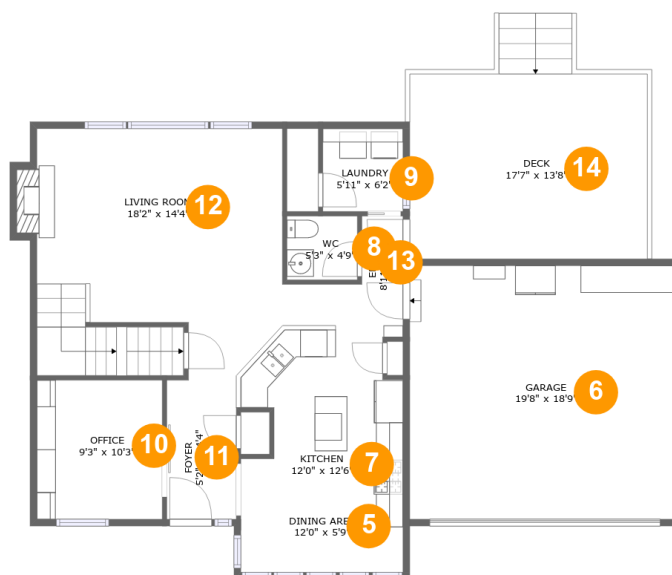
Room dimensions

Floor 1

Total sqft: 891 Living area: 728

#		Dimensions	sqft	Counted as living area
1	Recreation Room	27'1" x 11'5"	292 sq. ft	Yes
2	Hall	6'11" x 3'7"	25 sq. ft	Yes
3	Family Room	20'0" x 14'0"	309 sq. ft	Yes
4	Electrical Room	6'9" x 18'3"	123 sq. ft	No

5228 Essington Street, South Bend, St. Joseph County, Indiana, United States, 46614



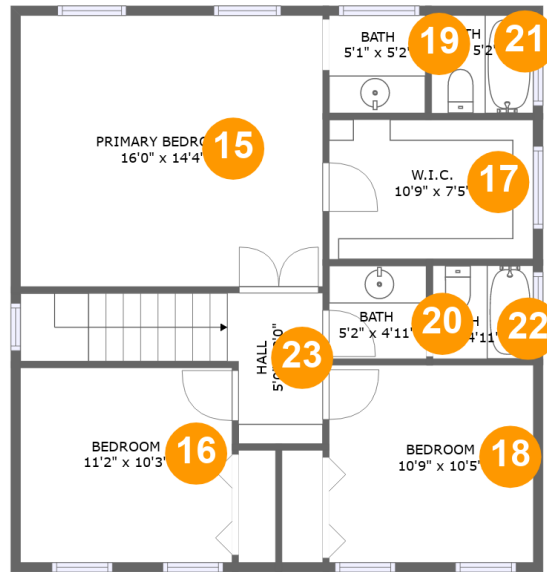
Room dimensions

Floor 2

Total sqft: 1537 Living area: 890

#		Dimensions	sqft	Counted as living area
5	Dining Area	12'0" x 5'9"	69 sq. ft	Yes
6	Garage	19'8" x 18'9"	368 sq. ft	No
7	Kitchen	12'0" x 12'6"	131 sq. ft	Yes
8	WC	5'3" x 4'9"	25 sq. ft	Yes
9	Laundry	5'11" x 6'2"	36 sq. ft	Yes
10	Office	9'3" x 10'3"	95 sq. ft	Yes
11	Foyer	5'2" x 14'4"	73 sq. ft	Yes
12	Living Room	18'2" x 14'4"	310 sq. ft	Yes
13	Entry	8'11" x 8'1"	43 sq. ft	Yes
14	Deck	17'7" x 13'8"	240 sq. ft	No

**5228 Essington Street, South Bend, St. Joseph
County, Indiana, United States, 46614**



Room dimensions

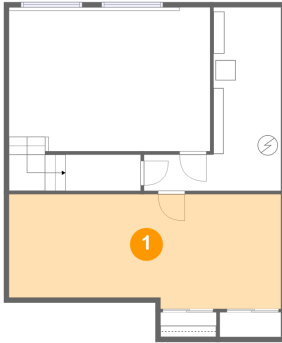
Floor 3

Total sqft: 839 Living area: 839

#		Dimensions	sqft	Counted as living area
15	Primary Bedroom	16'0" x 14'4"	229 sq. ft	Yes
16	Bedroom	11'2" x 10'3"	115 sq. ft	Yes
17	W.I.C.	10'9" x 7'5"	80 sq. ft	Yes
18	Bedroom	10'9" x 10'5"	112 sq. ft	Yes
19	Bath	5'1" x 5'2"	26 sq. ft	Yes
20	Bath	5'2" x 4'11"	25 sq. ft	Yes
21	Bath	5'5" x 5'2"	28 sq. ft	Yes
22	Bath	5'4" x 4'11"	26 sq. ft	Yes
23	Hall	5'0" x 8'0"	77 sq. ft	Yes

5228 Essington Street, South Bend, St. Joseph
County, Indiana, United States, 46614

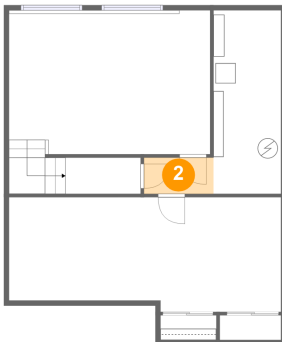
1 Floor 1 - Recreation Room



Dimensions: 27'1" x 11'5"
Area: 292 sq. ft
Counted as living area: Yes

Heated: Yes
Finished: Yes
Enclosed: Yes
Contiguous: Yes
Permitted: Yes
Wet space: No
Addition: No
Conversion: No

2 Floor 1 - Hall

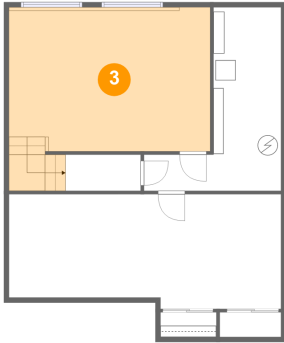


Dimensions: 6'11" x 3'7"
Area: 25 sq. ft
Counted as living area: Yes

Heated: Yes
Finished: Yes
Enclosed: Yes
Contiguous: Yes
Permitted: Yes
Wet space: No
Addition: No
Conversion: No

5228 Essington Street, South Bend, St. Joseph
County, Indiana, United States, 46614

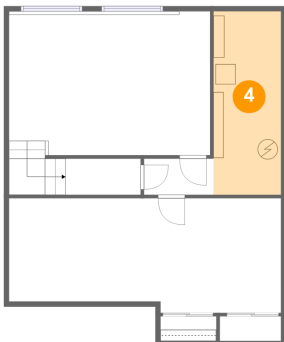
3 Floor 1 - Family Room



Dimensions: 20'0" x 14'0"
Area: 309 sq. ft
Counted as living area: Yes

Heated: Yes
Finished: Yes
Enclosed: Yes
Contiguous: Yes
Permitted: Yes
Wet space: No
Addition: No
Conversion: No

4 Floor 1 - Electrical Room



Dimensions: 6'9" x 18'3"
Area: 123 sq. ft
Counted as living area: No

Heated: No
Finished: No
Enclosed: Yes
Contiguous: Yes
Permitted: Yes
Wet space: No
Addition: No
Conversion: No

5 Floor 2 - Dining Area

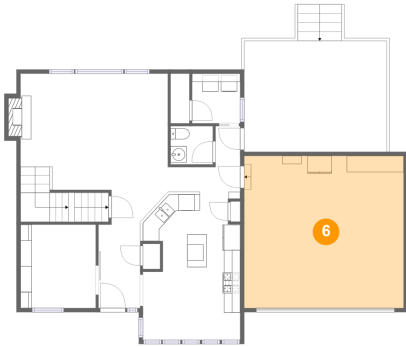


Dimensions: 12'0" x 5'9"
Area: 69 sq. ft
Counted as living area: Yes

Heated: Yes
Finished: Yes
Enclosed: Yes
Contiguous: Yes
Permitted: Yes
Wet space: No
Addition: No
Conversion: No

5228 Essington Street, South Bend, St. Joseph
County, Indiana, United States, 46614

6 Floor 2 - Garage



Dimensions: 19'8" x 18'9"
Area: 368 sq. ft
Counted as living area: No

Heated: No
Finished: No
Enclosed: Yes
Contiguous: Yes
Permitted: Yes
Wet space: No
Addition: No
Conversion: No

7 Floor 2 - Kitchen



Dimensions: 12'0" x 12'6"
Area: 131 sq. ft
Counted as living area: Yes

Heated: Yes
Finished: Yes
Enclosed: Yes
Contiguous: Yes
Permitted: Yes
Wet space: No
Addition: No
Conversion: No

8 Floor 2 - WC



Dimensions: 5'3" x 4'9"
Area: 25 sq. ft
Counted as living area: Yes

Heated: Yes
Finished: Yes
Enclosed: Yes
Contiguous: Yes
Permitted: Yes
Wet space: Yes
Addition: No
Conversion: No

5228 Essington Street, South Bend, St. Joseph
County, Indiana, United States, 46614

9 Floor 2 - Laundry



Dimensions: 5'11" x 6'2"
Area: 36 sq. ft
Counted as living area: Yes

Heated: Yes
Finished: Yes
Enclosed: Yes
Contiguous: Yes
Permitted: Yes
Wet space: No
Addition: No
Conversion: No

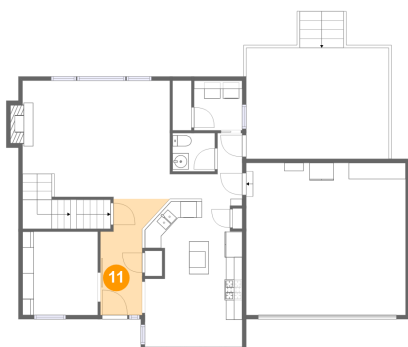
10 Floor 2 - Office



Dimensions: 9'3" x 10'3"
Area: 95 sq. ft
Counted as living area: Yes

Heated: Yes
Finished: Yes
Enclosed: Yes
Contiguous: Yes
Permitted: Yes
Wet space: No
Addition: No
Conversion: No

11 Floor 2 - Foyer

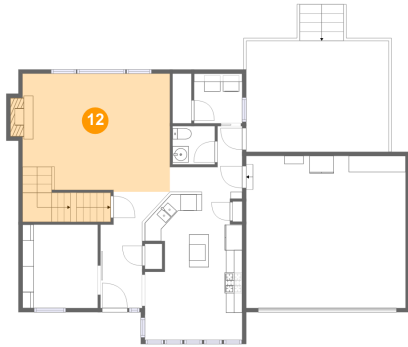


Dimensions: 5'2" x 14'4"
Area: 73 sq. ft
Counted as living area: Yes

Heated: Yes
Finished: Yes
Enclosed: Yes
Contiguous: Yes
Permitted: Yes
Wet space: No
Addition: No
Conversion: No

5228 Essington Street, South Bend, St. Joseph
County, Indiana, United States, 46614

12 Floor 2 - Living Room



Dimensions: 18'2" x 14'4"
Area: 310 sq. ft
Counted as living area: Yes

Heated: Yes
Finished: Yes
Enclosed: Yes
Contiguous: Yes
Permitted: Yes
Wet space: No
Addition: No
Conversion: No

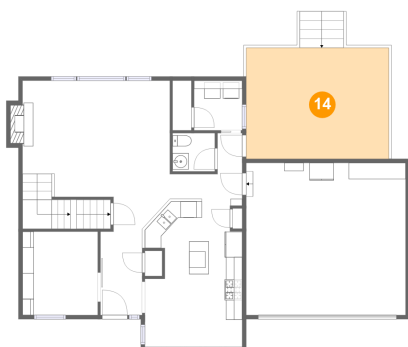
13 Floor 2 - Entry



Dimensions: 8'11" x 8'1"
Area: 43 sq. ft
Counted as living area: Yes

Heated: Yes
Finished: Yes
Enclosed: Yes
Contiguous: Yes
Permitted: Yes
Wet space: No
Addition: No
Conversion: No

14 Floor 2 - Deck

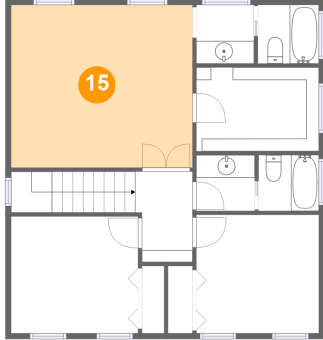


Dimensions: 17'7" x 13'8"
Area: 240 sq. ft
Counted as living area: No

Heated: No
Finished: Yes
Enclosed: No
Contiguous: Yes
Permitted: Yes
Wet space: No
Addition: No
Conversion: No

5228 Essington Street, South Bend, St. Joseph
County, Indiana, United States, 46614

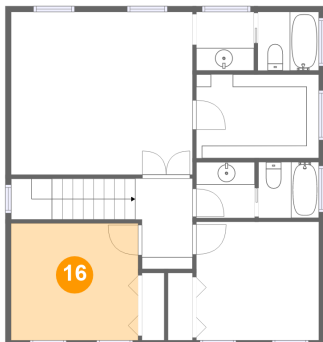
15 Floor 3 - Primary Bedroom



Dimensions: 16'0" x 14'4"
Area: 229 sq. ft
Counted as living area: Yes

Heated: Yes
Finished: Yes
Enclosed: Yes
Contiguous: Yes
Permitted: Yes
Wet space: No
Addition: No
Conversion: No

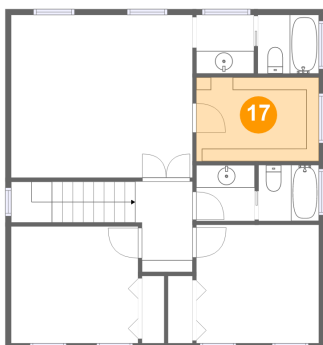
16 Floor 3 - Bedroom



Dimensions: 11'2" x 10'3"
Area: 115 sq. ft
Counted as living area: Yes

Heated: Yes
Finished: Yes
Enclosed: Yes
Contiguous: Yes
Permitted: Yes
Wet space: No
Addition: No
Conversion: No

17 Floor 3 - W.I.C.

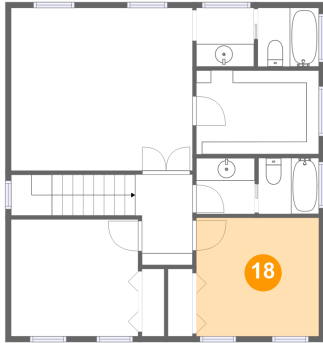


Dimensions: 10'9" x 7'5"
Area: 80 sq. ft
Counted as living area: Yes

Heated: Yes
Finished: Yes
Enclosed: Yes
Contiguous: Yes
Permitted: Yes
Wet space: No
Addition: No
Conversion: No

5228 Essington Street, South Bend, St. Joseph
County, Indiana, United States, 46614

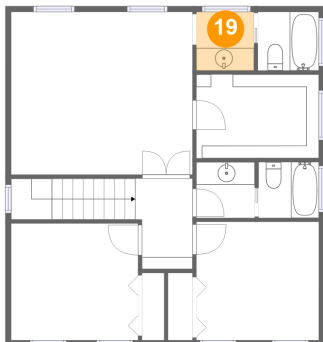
18 Floor 3 - Bedroom



Dimensions: 10'9" x 10'5"
Area: 112 sq. ft
Counted as living area: Yes

Heated: Yes
Finished: Yes
Enclosed: Yes
Contiguous: Yes
Permitted: Yes
Wet space: No
Addition: No
Conversion: No

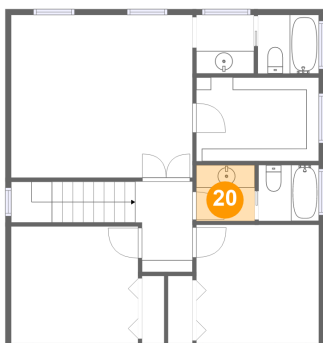
19 Floor 3 - Bath



Dimensions: 5'1" x 5'2"
Area: 26 sq. ft
Counted as living area: Yes

Heated: Yes
Finished: Yes
Enclosed: Yes
Contiguous: Yes
Permitted: Yes
Wet space: Yes
Addition: No
Conversion: No

20 Floor 3 - Bath

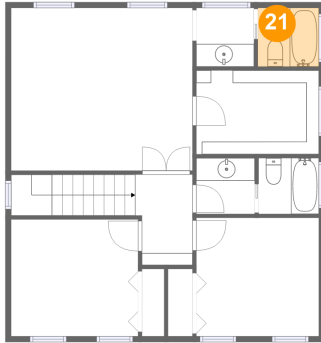


Dimensions: 5'2" x 4'11"
Area: 25 sq. ft
Counted as living area: Yes

Heated: Yes
Finished: Yes
Enclosed: Yes
Contiguous: Yes
Permitted: Yes
Wet space: Yes
Addition: No
Conversion: No

5228 Essington Street, South Bend, St. Joseph
County, Indiana, United States, 46614

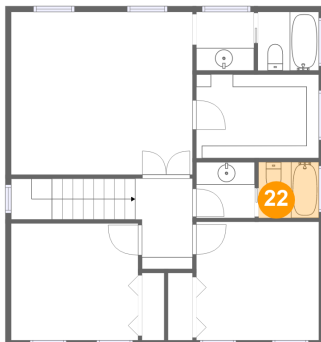
21 Floor 3 - Bath



Dimensions: 5'5" x 5'2"
Area: 28 sq. ft
Counted as living area: Yes

Heated: Yes
Finished: Yes
Enclosed: Yes
Contiguous: Yes
Permitted: Yes
Wet space: Yes
Addition: No
Conversion: No

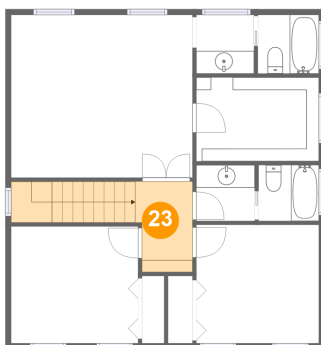
22 Floor 3 - Bath



Dimensions: 5'4" x 4'11"
Area: 26 sq. ft
Counted as living area: Yes

Heated: Yes
Finished: Yes
Enclosed: Yes
Contiguous: Yes
Permitted: Yes
Wet space: Yes
Addition: No
Conversion: No

23 Floor 3 - Hall



Dimensions: 5'0" x 8'0"
Area: 77 sq. ft
Counted as living area: Yes

Heated: Yes
Finished: Yes
Enclosed: Yes
Contiguous: Yes
Permitted: Yes
Wet space: No
Addition: No
Conversion: No