

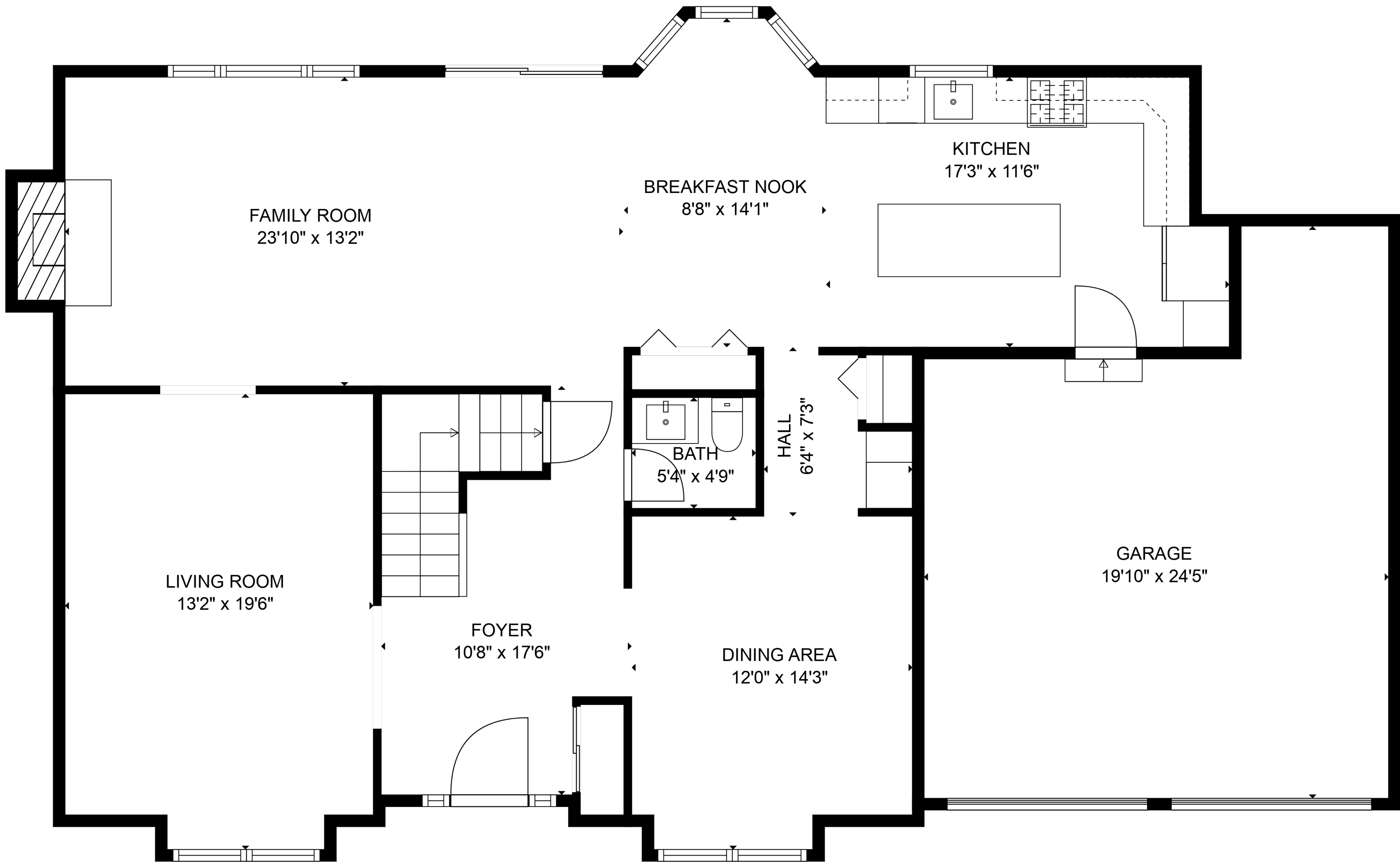
● BASEMENT
49'3" x 35'0"



TOTAL: 2869 sq. ft
BELOW GROUND: 0 sq. ft, FLOOR 2: 1726 sq. ft, FLOOR 3: 1143 sq. ft
EXCLUDED AREAS: BASEMENT: 1265 sq. ft, FIREPLACE: 12 sq. ft

Floor plans are intended to give a general indication of the property layout. Sizes and dimensions are estimate, Actual may vary.

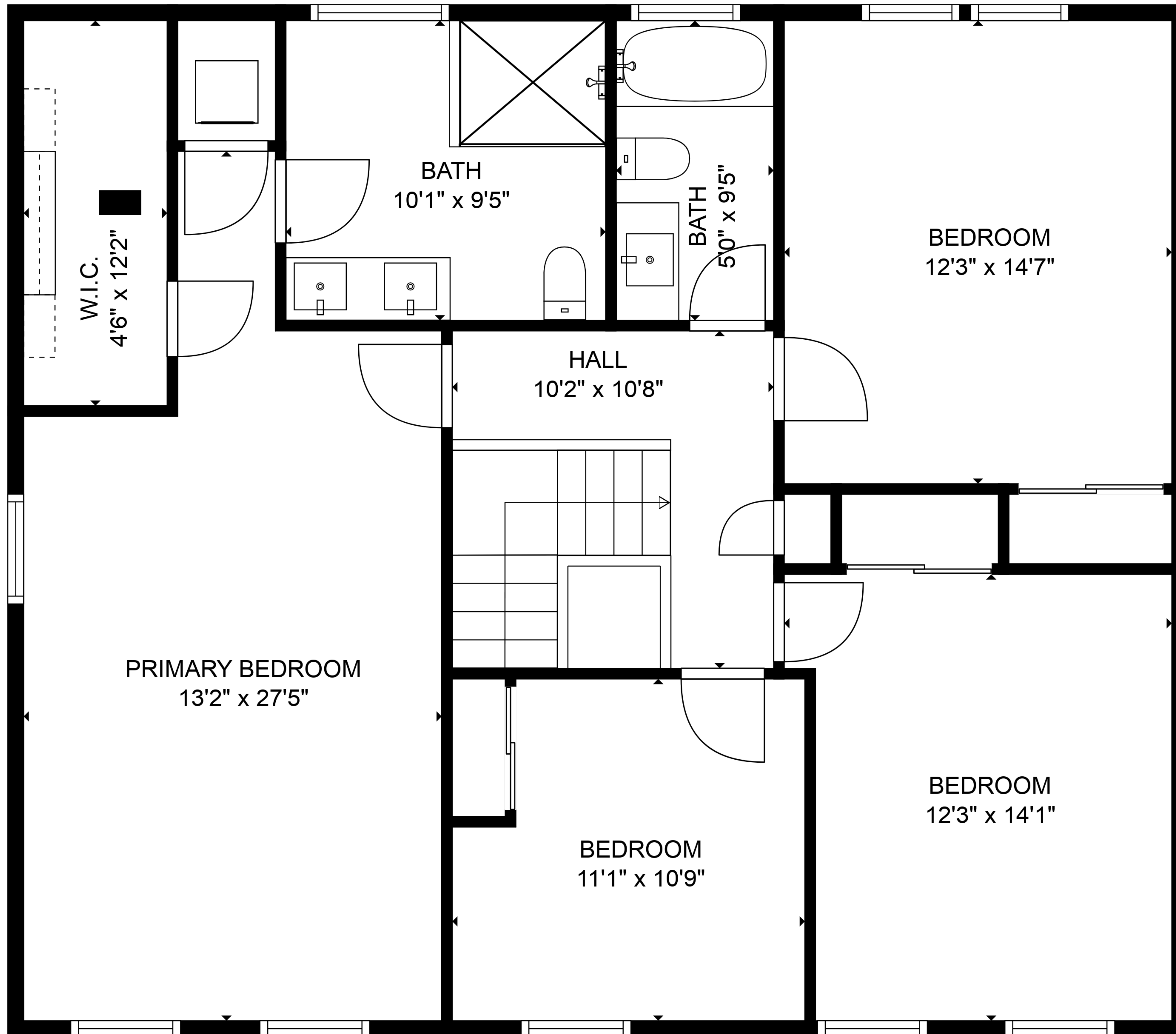




TOTAL: 2869 sq. ft
 BELOW GROUND: 0 sq. ft, FLOOR 2: 1726 sq. ft, FLOOR 3: 1143 sq. ft
 EXCLUDED AREAS: BASEMENT: 1265 sq. ft, FIREPLACE: 12 sq. ft

Floor plans are intended to give a general indication of the property layout. Sizes and dimensions are estimate, Actual may vary.

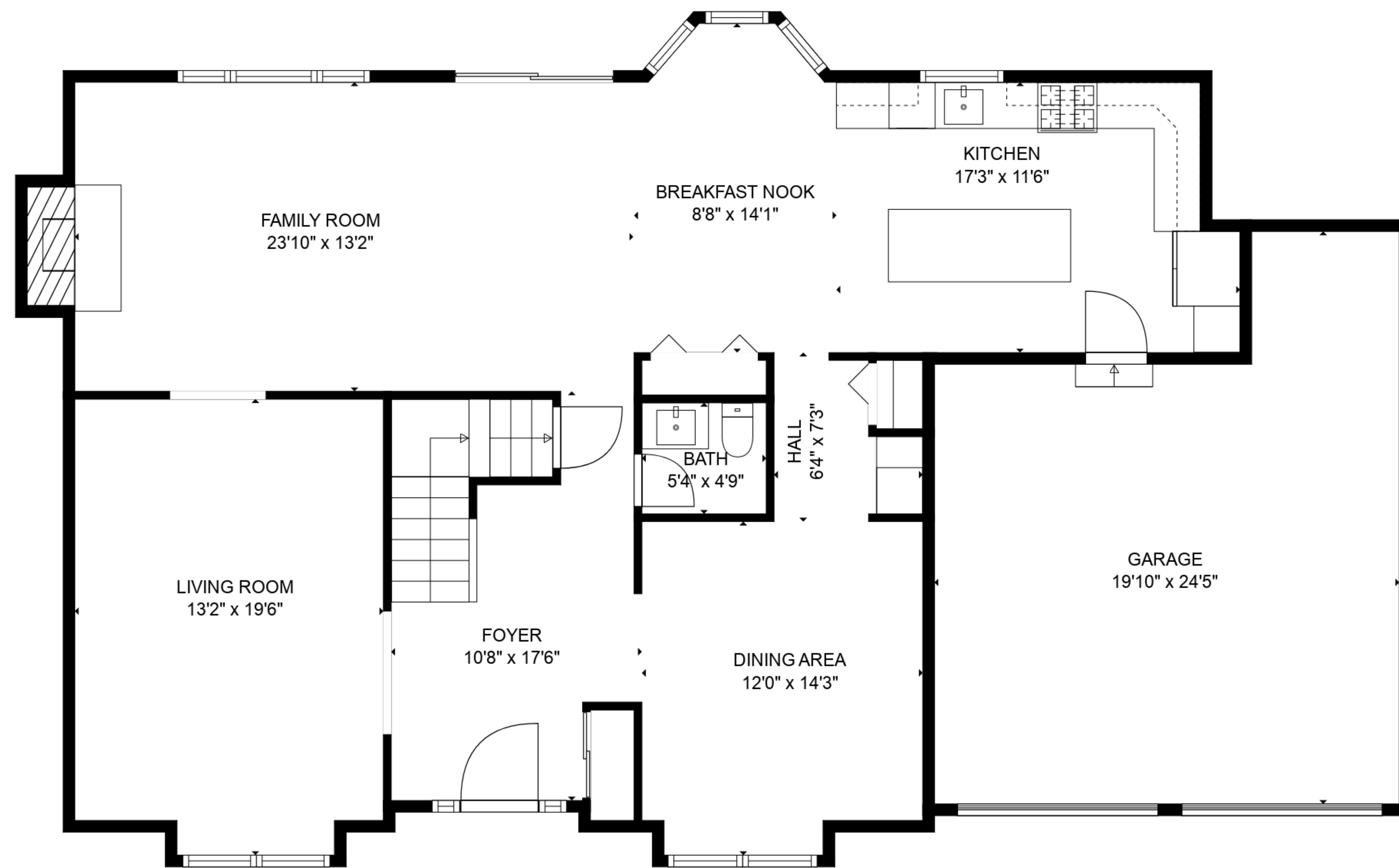




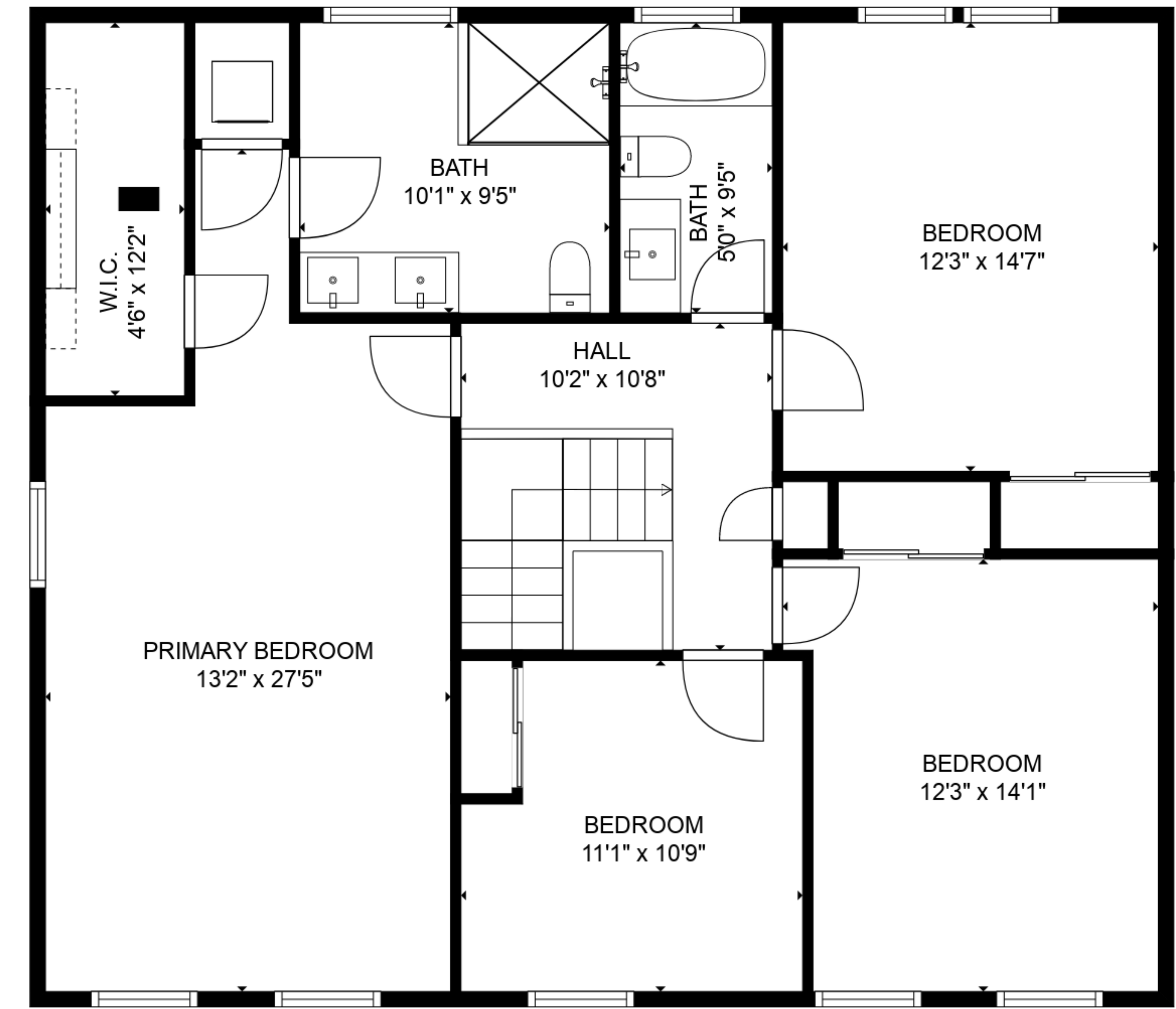
TOTAL: 2869 sq. ft
 BELOW GROUND: 0 sq. ft, FLOOR 2: 1726 sq. ft, FLOOR 3: 1143 sq. ft
 EXCLUDED AREAS: BASEMENT: 1265 sq. ft, FIREPLACE: 12 sq. ft

Floor plans are intended to give a general indication of the property layout. Sizes and dimensions are estimate, Actual may vary.

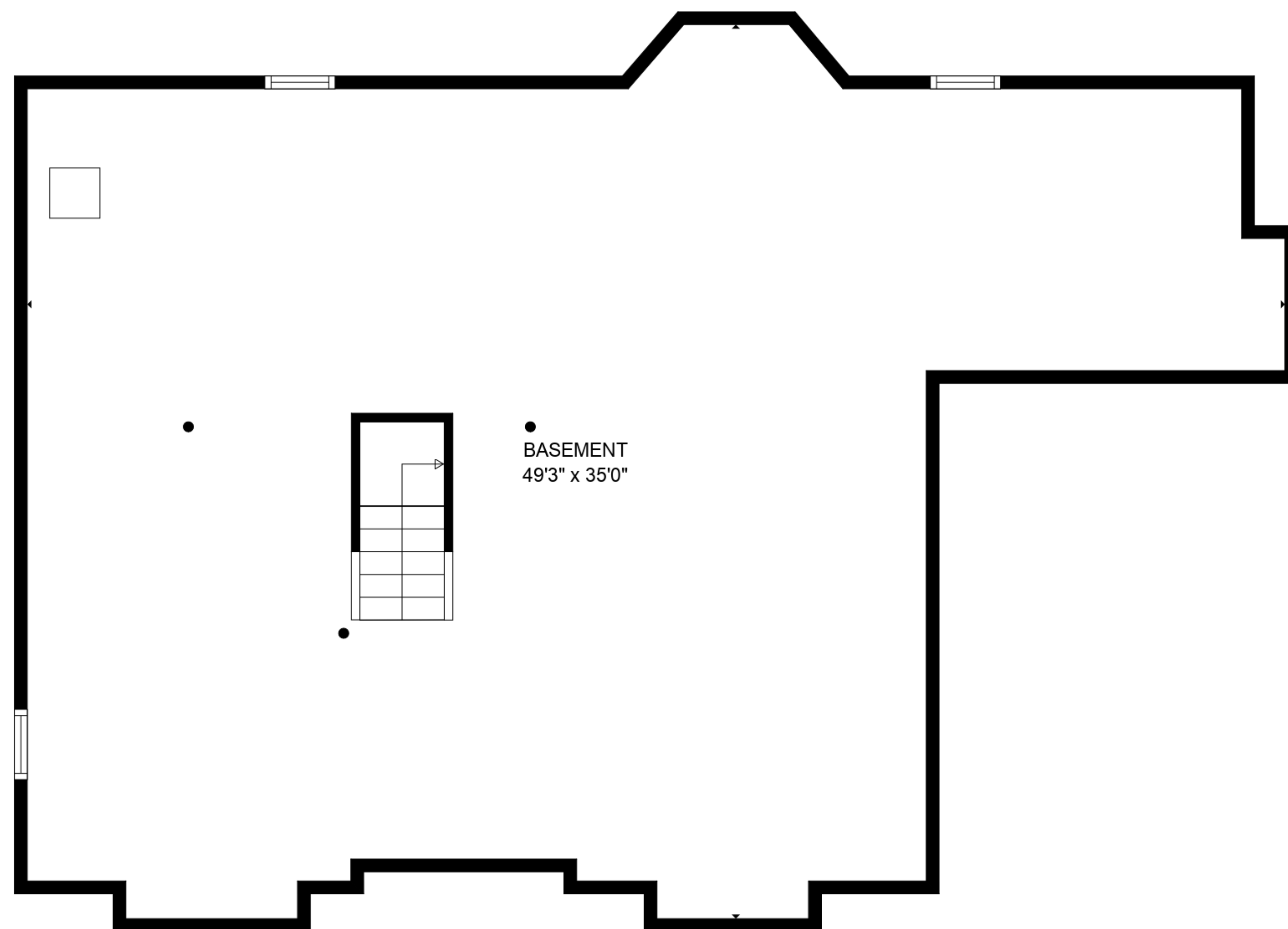




FLOOR 2



FLOOR 3



FLOOR 1



TOTAL: 2869 sq. ft
 BELOW GROUND: 0 sq. ft, FLOOR 2: 1726 sq. ft, FLOOR 3: 1143 sq. ft
 EXCLUDED AREAS: BASEMENT: 1265 sq. ft, FIREPLACE: 12 sq. ft

Floor plans are intended to give a general indication of the property layout. Sizes and dimensions are estimate, Actual may vary.

