

Home Data Report

**190 Pearl Street, Saint Albans, Franklin County,  
Vermont, United States, 05478**




## Property Summary


 **0** garages


 **3** bedrooms

 **2** bathrooms

 **2** half baths

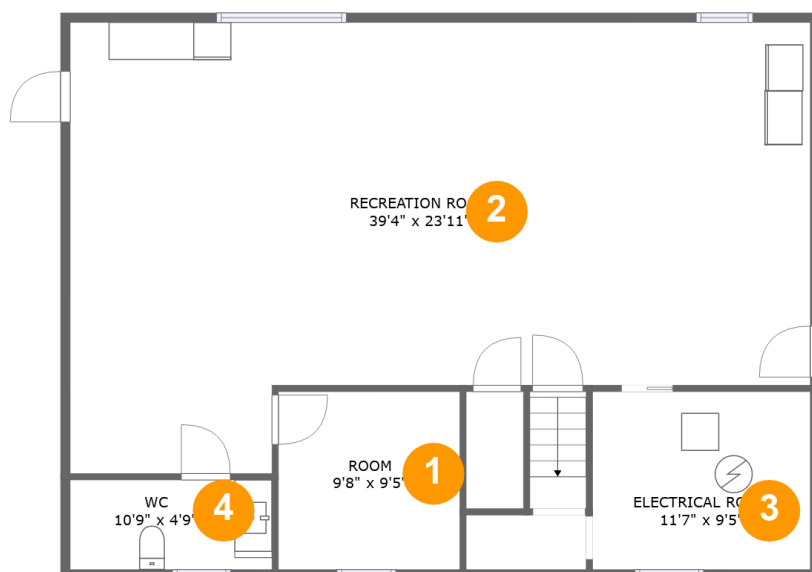
 **2** floors

 **2,907**  
Gross Living  
Area sqft

 **3,967**  
total sqft

## Home Data Report

**190 Pearl Street, Saint Albans, Franklin County,  
Vermont, United States, 05478**



## Room Dimensions

**Floor 1**

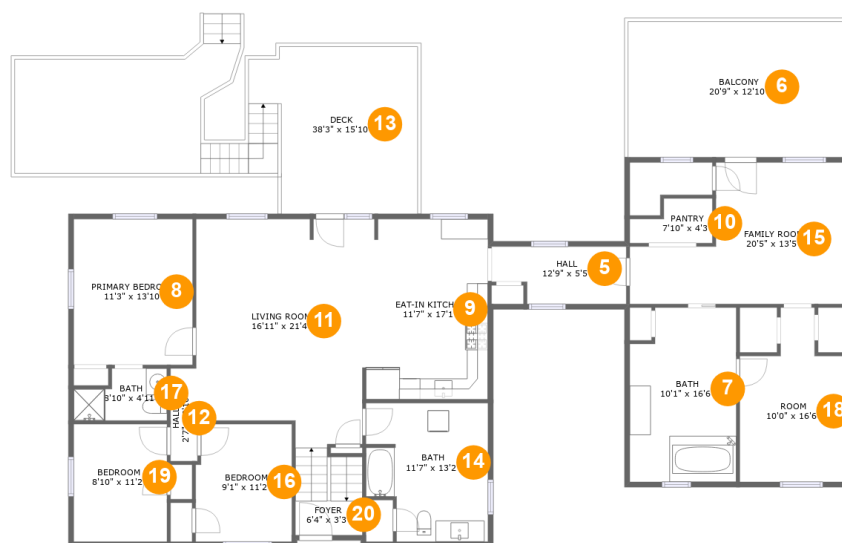
**Total sqft: 1211**

**Living area: 1068**

#	Room name	Dimensions	Area (sqft)	Counted as Living Area
1	Room	9'8" x 9'5"	91 sq. ft	Yes
2	Recreation Room	39'4" x 23'11"	807 sq. ft	Yes
3	Electrical Room	11'7" x 9'5"	109 sq. ft	No
4	Wc	10'9" x 4'9"	51 sq. ft	Yes

## Home Data Report

**190 Pearl Street, Saint Albans, Franklin County,  
Vermont, United States, 05478**



## Room Dimensions

**Floor 2**

**Total sqft: 2756**

**Living area: 1839**

#	Room name	Dimensions	Area (sqft)	Counted as Living Area
5	Hall	12'9" x 5'5"	63 sq. ft	Yes
6	Balcony	20'9" x 12'10"	267 sq. ft	No
7	Bath	10'1" x 16'6"	159 sq. ft	No
8	Primary Bedroom	11'3" x 13'10"	156 sq. ft	Yes
9	Eat-in Kitchen	11'7" x 17'1"	186 sq. ft	Yes
10	Pantry	7'10" x 4'3"	27 sq. ft	Yes
11	Living Room	16'11" x 21'4"	331 sq. ft	Yes
12	Hall	2'7" x 8'10"	22 sq. ft	Yes
13	Deck	38'3" x 15'10"	469 sq. ft	No
14	Bath	11'7" x 13'2"	139 sq. ft	Yes
15	Family Room	20'5" x 13'5"	209 sq. ft	Yes

Home Data Report

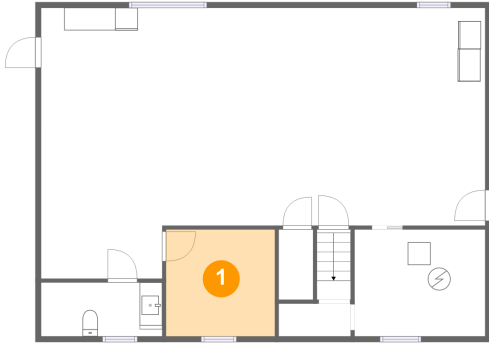
**190 Pearl Street, Saint Albans, Franklin County,  
Vermont, United States, 05478**

#	Room name	Dimensions	Area (sqft)	Counted as Living Area
16	Bedroom	9'1" x 11'2"	100 sq. ft	Yes
17	Bath	8'10" x 4'11"	37 sq. ft	Yes
18	Room	10'0" x 16'6"	134 sq. ft	Yes
19	Bedroom	8'10" x 11'2"	99 sq. ft	Yes
20	Foyer	6'4" x 3'3"	51 sq. ft	Yes

**190 Pearl Street, Saint Albans, Franklin County,  
Vermont, United States, 05478**

**1 Floor 1 - Room**

---

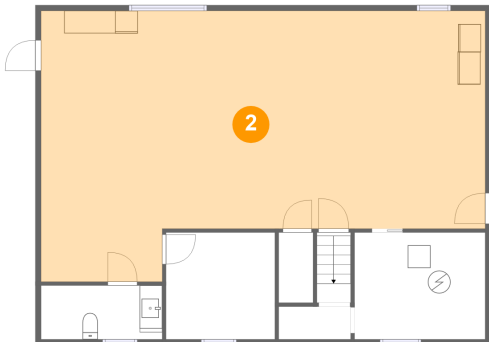


Dimensions: 9'8" x 9'5"  
Area: 91 sq. ft  
Counted as Living Area:  
Yes

Heated: Yes  
Finished: Yes  
Enclosed: Yes  
Contiguous:  
Yes  
Permitted: Yes  
Wet Space: No  
Addition: No  
Conversion: No

**2 Floor 1 - Recreation Room**

---

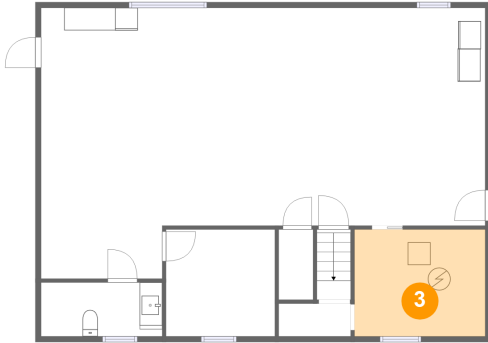


Dimensions: 39'4" x 23'11"  
Area: 807 sq. ft  
Counted as Living Area:  
Yes

Heated: Yes  
Finished: Yes  
Enclosed: Yes  
Contiguous:  
Yes  
Permitted: Yes  
Wet Space: No  
Addition: No  
Conversion: No

**190 Pearl Street, Saint Albans, Franklin County,  
Vermont, United States, 05478**

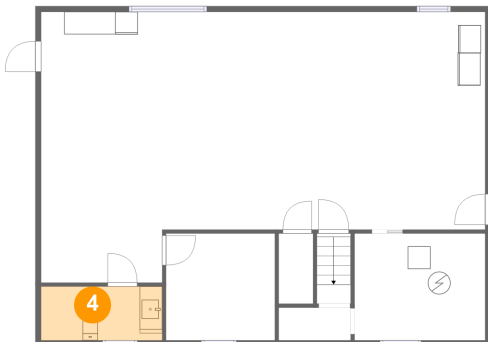
**3 Floor 1 - Electrical Room**



Dimensions: 11'7" x 9'5"  
Area: 109 sq. ft  
Counted as Living Area: No

Heated: No  
Finished: No  
Enclosed: Yes  
Contiguous: Yes  
Permitted: Yes  
Wet Space: No  
Addition: No  
Conversion: No

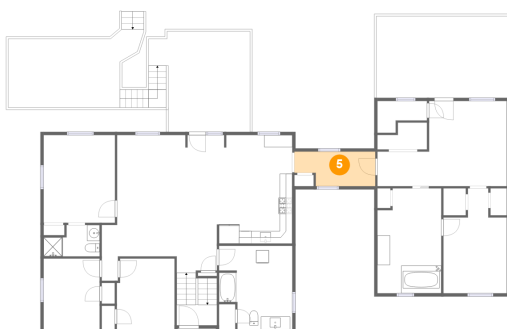
**4 Floor 1 - Wc**



Dimensions: 10'9" x 4'9"  
Area: 51 sq. ft  
Counted as Living Area:  
Yes

Heated: Yes  
Finished: Yes  
Enclosed: Yes  
Contiguous:  
Yes  
Permitted: Yes  
Wet Space: Yes  
Addition: No  
Conversion: No

**5 Floor 2 - Hall**

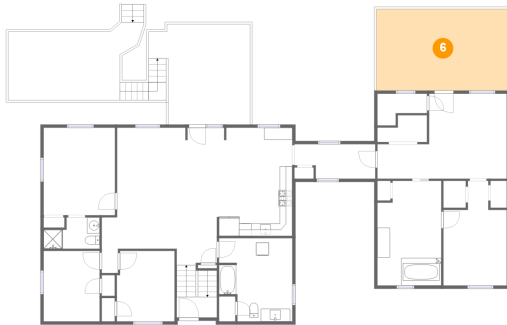


Dimensions: 12'9" x 5'5"  
Area: 63 sq. ft  
Counted as Living Area:  
Yes

Heated: Yes  
Finished: Yes  
Enclosed: Yes  
Contiguous:  
Yes  
Permitted: Yes  
Wet Space: No  
Addition: No  
Conversion: No

**190 Pearl Street, Saint Albans, Franklin County,  
Vermont, United States, 05478**

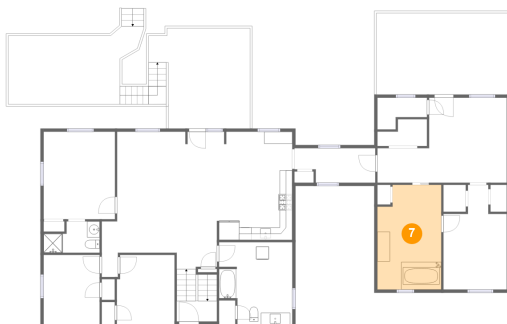
**6 Floor 2 - Balcony**



Dimensions: 20'9" x 12'10"  
Area: 267 sq. ft  
Counted as Living Area: No

Heated: No  
Finished: Yes  
Enclosed: No  
Contiguous: Yes  
Permitted: Yes  
Wet Space: No  
Addition: No  
Conversion: No

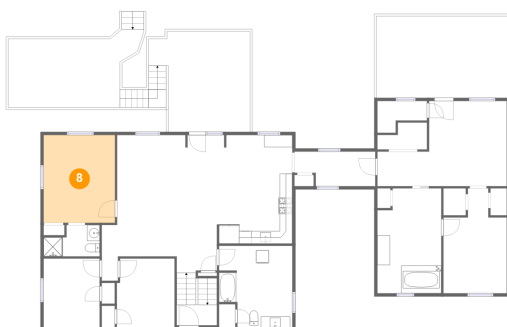
**7 Floor 2 - Bath**



Dimensions: 10'1" x 16'6"  
Area: 159 sq. ft  
Counted as Living Area: No

Heated: Yes  
Finished: No  
Enclosed: Yes  
Contiguous: Yes  
Permitted: Yes  
Wet Space: Yes  
Addition: No  
Conversion: No

**8 Floor 2 - Primary Bedroom**



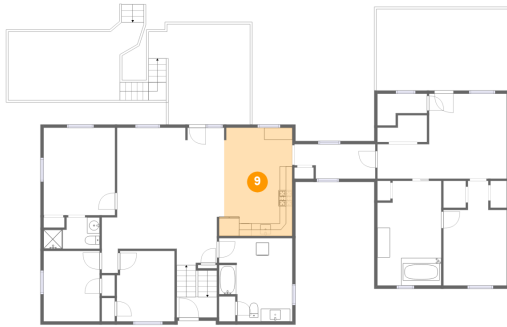
Dimensions: 11'3" x 13'10"  
Area: 156 sq. ft  
Counted as Living Area:  
Yes

Heated: Yes  
Finished: Yes  
Enclosed: Yes  
Contiguous:  
Yes  
Permitted: Yes  
Wet Space: No  
Addition: No  
Conversion: No

**190 Pearl Street, Saint Albans, Franklin County,  
Vermont, United States, 05478**

**9 Floor 2 - Eat-in Kitchen**

---



Dimensions: 11'7" x 17'1"  
Area: 186 sq. ft  
Counted as Living Area:  
Yes

Heated: Yes  
Finished: Yes  
Enclosed: Yes  
Contiguous:  
Yes  
Permitted: Yes  
Wet Space: No  
Addition: No  
Conversion: No

**10 Floor 2 - Pantry**

---

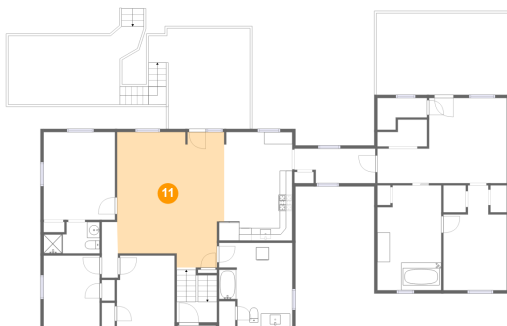


Dimensions: 7'10" x 4'3"  
Area: 27 sq. ft  
Counted as Living Area:  
Yes

Heated: Yes  
Finished: Yes  
Enclosed: Yes  
Contiguous:  
Yes  
Permitted: Yes  
Wet Space: No  
Addition: No  
Conversion: No

**11 Floor 2 - Living Room**

---



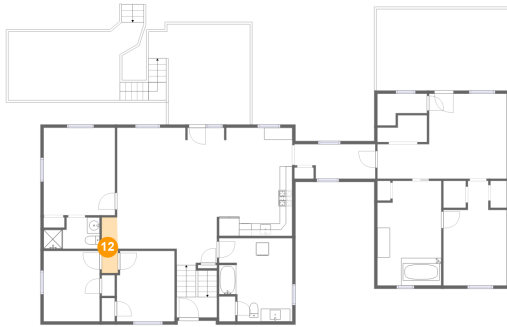
Dimensions: 16'11" x 21'4"  
Area: 331 sq. ft  
Counted as Living Area:  
Yes

Heated: Yes  
Finished: Yes  
Enclosed: Yes  
Contiguous:  
Yes  
Permitted: Yes  
Wet Space: No  
Addition: No  
Conversion: No



**190 Pearl Street, Saint Albans, Franklin County,  
Vermont, United States, 05478**

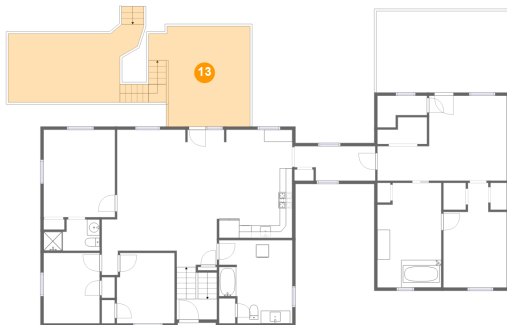
**12 Floor 2 - Hall**



Dimensions: 2'7" x 8'10"  
Area: 22 sq. ft  
Counted as Living Area:  
Yes

Heated: Yes  
Finished: Yes  
Enclosed: Yes  
Contiguous:  
Yes  
Permitted: Yes  
Wet Space: No  
Addition: No  
Conversion: No

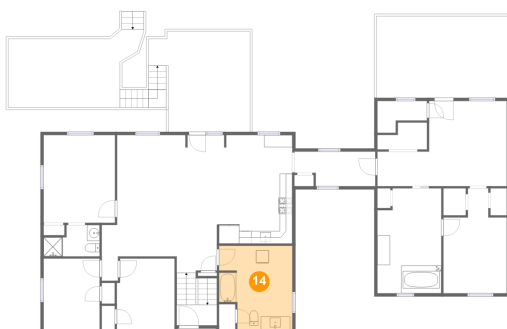
**13 Floor 2 - Deck**



Dimensions: 38'3" x 15'10"  
Area: 469 sq. ft  
Counted as Living Area: No

Heated: No  
Finished: Yes  
Enclosed: No  
Contiguous: Yes  
Permitted: Yes  
Wet Space: No  
Addition: No  
Conversion: No

**14 Floor 2 - Bath**



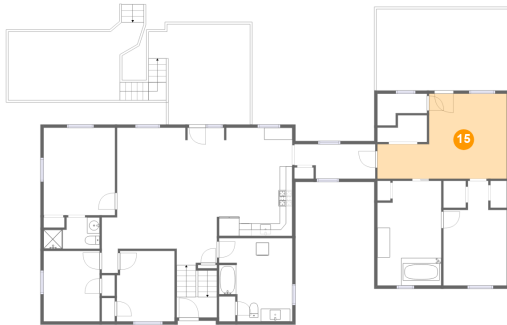
Dimensions: 11'7" x 13'2"  
Area: 139 sq. ft  
Counted as Living Area:  
Yes

Heated: Yes  
Finished: Yes  
Enclosed: Yes  
Contiguous:  
Yes  
Permitted: Yes  
Wet Space: Yes  
Addition: No  
Conversion: No

**190 Pearl Street, Saint Albans, Franklin County,  
Vermont, United States, 05478**

**15 Floor 2 - Family Room**

---

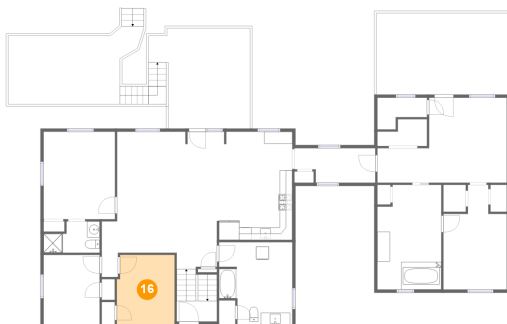


Dimensions: 20'5" x 13'5"  
Area: 209 sq. ft  
Counted as Living Area:  
Yes

Heated: Yes  
Finished: Yes  
Enclosed: Yes  
Contiguous:  
Yes  
Permitted: Yes  
Wet Space: No  
Addition: No  
Conversion: No

**16 Floor 2 - Bedroom**

---

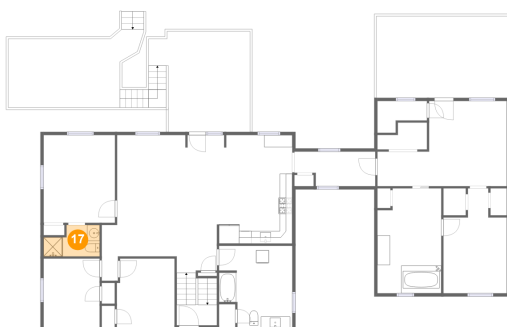


Dimensions: 9'1" x 11'2"  
Area: 100 sq. ft  
Counted as Living Area:  
Yes

Heated: Yes  
Finished: Yes  
Enclosed: Yes  
Contiguous:  
Yes  
Permitted: Yes  
Wet Space: No  
Addition: No  
Conversion: No

**17 Floor 2 - Bath**

---

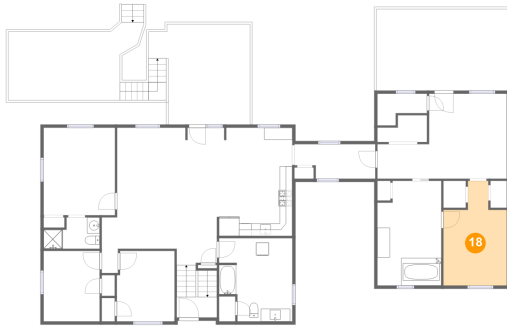


Dimensions: 8'10" x 4'11"  
Area: 37 sq. ft  
Counted as Living Area:  
Yes

Heated: Yes  
Finished: Yes  
Enclosed: Yes  
Contiguous:  
Yes  
Permitted: Yes  
Wet Space: Yes  
Addition: No  
Conversion: No

**190 Pearl Street, Saint Albans, Franklin County,  
Vermont, United States, 05478**

**18 Floor 2 - Room**



Dimensions: 10'0" x 16'6"  
Area: 134 sq. ft  
Counted as Living Area:  
Yes

Heated: Yes  
Finished: Yes  
Enclosed: Yes  
Contiguous:  
Yes  
Permitted: Yes  
Wet Space: No  
Addition: No  
Conversion: No

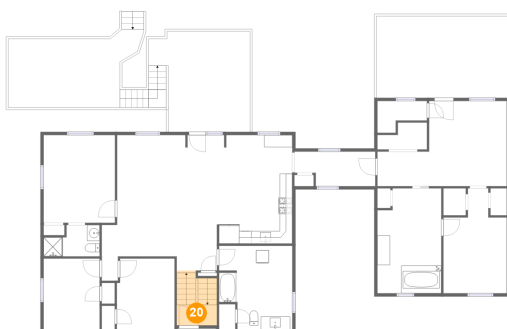
**19 Floor 2 - Bedroom**



Dimensions: 8'10" x 11'2"  
Area: 99 sq. ft  
Counted as Living Area:  
Yes

Heated: Yes  
Finished: Yes  
Enclosed: Yes  
Contiguous:  
Yes  
Permitted: Yes  
Wet Space: No  
Addition: No  
Conversion: No

**20 Floor 2 - Foyer**



Dimensions: 6'4" x 3'3"  
Area: 51 sq. ft  
Counted as Living Area:  
Yes

Heated: Yes  
Finished: Yes  
Enclosed: Yes  
Contiguous:  
Yes  
Permitted: Yes  
Wet Space: No  
Addition: No  
Conversion: No