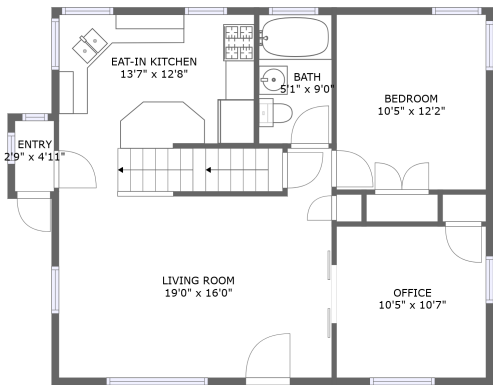
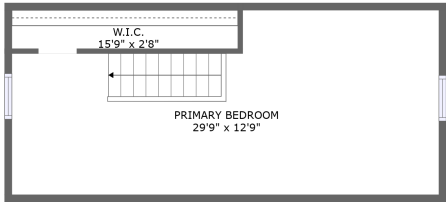


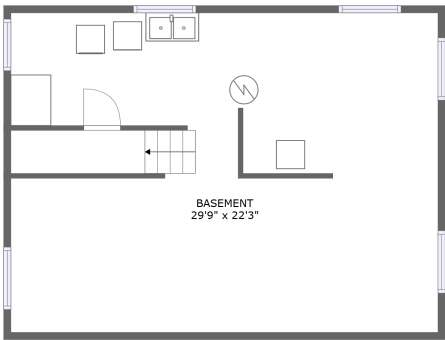
3141 South Brisbane Avenue, Milwaukee, Wisconsin
53207, United States



FLOOR 2



FLOOR 3



FLOOR 1

Property summary



0
Garages



2
Bedrooms



1
Bathrooms



0
Half baths



3
Floors

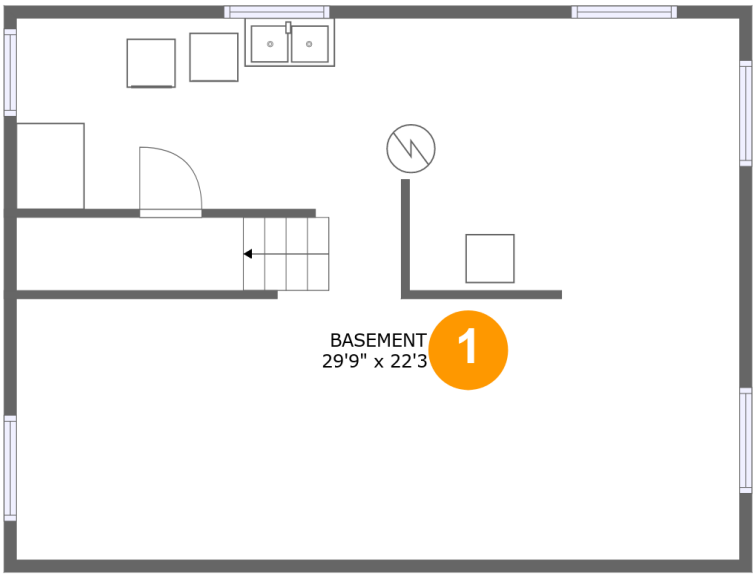


1,091
Gross living
area sqft



1,971
Total sqft

3141 South Brisbane Avenue, Milwaukee, Wisconsin
53207, United States

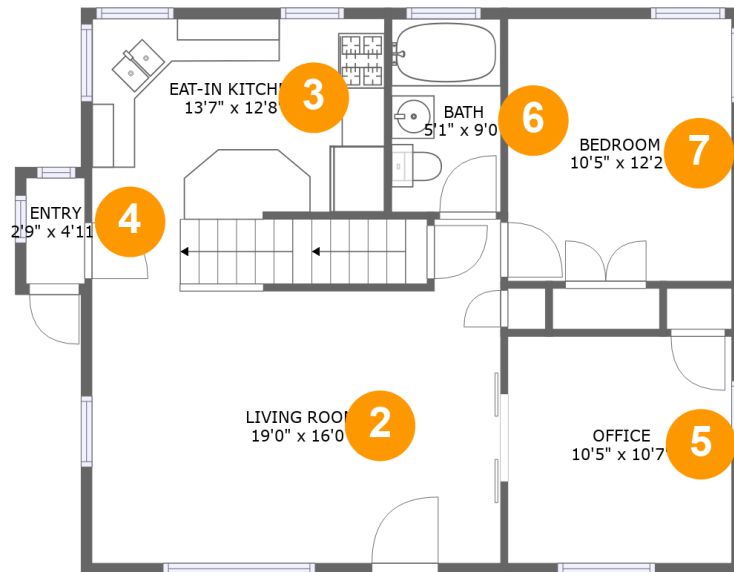


Room dimensions

Floor 1 Total sqft: 716 Living area: 0

| # | | Dimensions | sqft | Counted as living area |
|---|----------|---------------|------------|------------------------|
| 1 | Basement | 29'9" x 22'3" | 655 sq. ft | No |

**3141 South Brisbane Avenue, Milwaukee, Wisconsin
53207, United States**



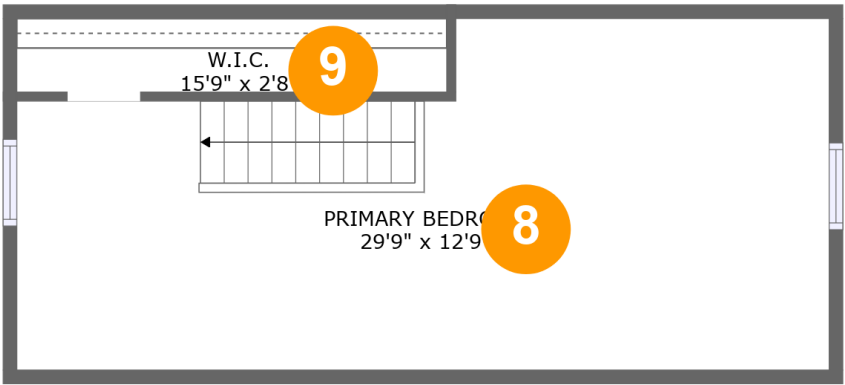
Room dimensions

Floor 2

Total sqft: 828 Living area: 828

| # | | Dimensions | sqft | Counted as living area |
|---|----------------|---------------|------------|------------------------|
| 2 | Living Room | 19'0" x 16'0" | 251 sq. ft | Yes |
| 3 | Eat-in Kitchen | 13'7" x 12'8" | 175 sq. ft | Yes |
| 4 | Entry | 2'9" x 4'11" | 13 sq. ft | Yes |
| 5 | Office | 10'5" x 10'7" | 110 sq. ft | Yes |
| 6 | Bath | 5'1" x 9'0" | 46 sq. ft | Yes |
| 7 | Bedroom | 10'5" x 12'2" | 127 sq. ft | Yes |

3141 South Brisbane Avenue, Milwaukee, Wisconsin
53207, United States



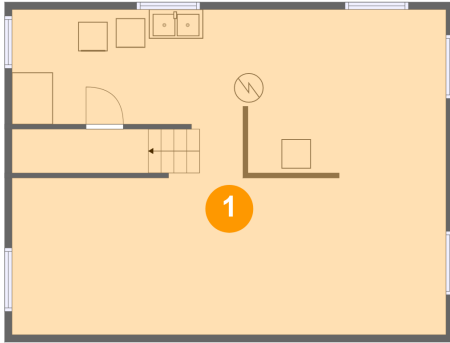
Room dimensions

Floor 3 Total sqft: 427 Living area: 263

| # | | Dimensions | sqft | Counted as living area |
|---|-----------------|---------------|------------|------------------------|
| 8 | Primary Bedroom | 29'9" x 12'9" | 240 sq. ft | Yes |
| 9 | W.I.C. | 15'9" x 2'8" | 9 sq. ft | Yes |

**3141 South Brisbane Avenue, Milwaukee, Wisconsin
53207, United States**

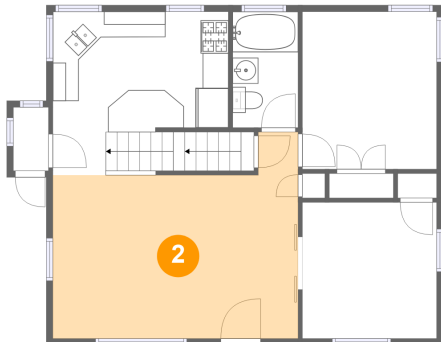
1 Floor 1 - Basement



Dimensions: 29'9" x 22'3"
Area: 655 sq. ft
Counted as living area: No

Heated: Yes
Finished: No
Enclosed: Yes
Contiguous: Yes
Permitted: Yes
Wet space: No
Addition: No
Conversion: No

2 Floor 2 - Living Room

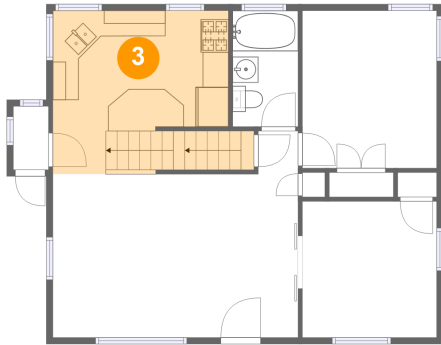


Dimensions: 19'0" x 16'0"
Area: 251 sq. ft
Counted as living area: Yes

Heated: Yes
Finished: Yes
Enclosed: Yes
Contiguous: Yes
Permitted: Yes
Wet space: No
Addition: No
Conversion: No

3141 South Brisbane Avenue, Milwaukee, Wisconsin
53207, United States

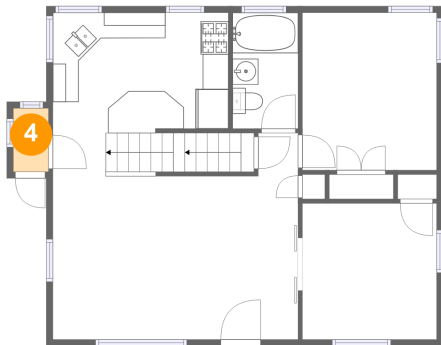
3 Floor 2 - Eat-in Kitchen



Dimensions: 13'7" x 12'8"
Area: 175 sq. ft
Counted as living area: Yes

Heated: Yes
Finished: Yes
Enclosed: Yes
Contiguous: Yes
Permitted: Yes
Wet space: No
Addition: No
Conversion: No

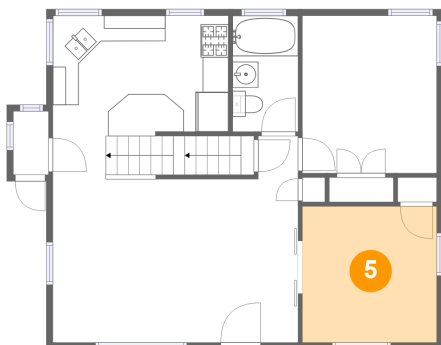
4 Floor 2 - Entry



Dimensions: 2'9" x 4'11"
Area: 13 sq. ft
Counted as living area: Yes

Heated: Yes
Finished: Yes
Enclosed: Yes
Contiguous: Yes
Permitted: Yes
Wet space: No
Addition: No
Conversion: No

5 Floor 2 - Office

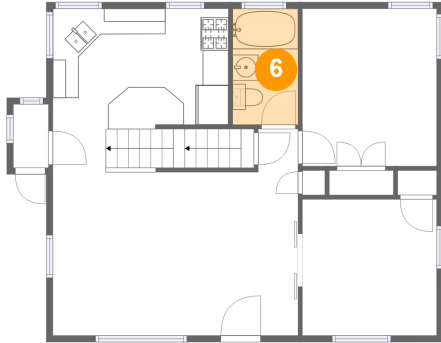


Dimensions: 10'5" x 10'7"
Area: 110 sq. ft
Counted as living area: Yes

Heated: Yes
Finished: Yes
Enclosed: Yes
Contiguous: Yes
Permitted: Yes
Wet space: No
Addition: No
Conversion: No

3141 South Brisbane Avenue, Milwaukee, Wisconsin
53207, United States

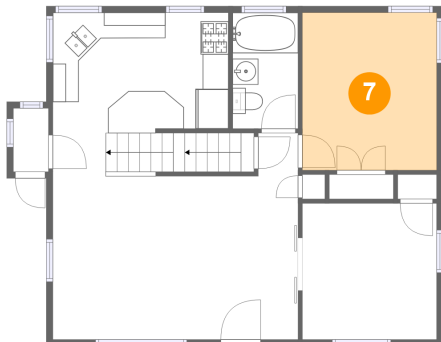
6 Floor 2 - Bath



Dimensions: 5'1" x 9'0"
Area: 46 sq. ft
Counted as living area: Yes

Heated: Yes
Finished: Yes
Enclosed: Yes
Contiguous: Yes
Permitted: Yes
Wet space: Yes
Addition: No
Conversion: No

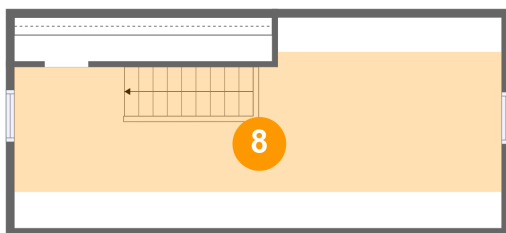
7 Floor 2 - Bedroom



Dimensions: 10'5" x 12'2"
Area: 127 sq. ft
Counted as living area: Yes

Heated: Yes
Finished: Yes
Enclosed: Yes
Contiguous: Yes
Permitted: Yes
Wet space: No
Addition: No
Conversion: No

8 Floor 3 - Primary Bedroom

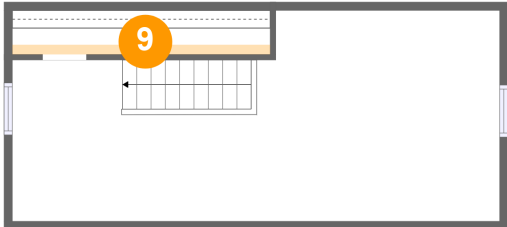


Dimensions: 29'9" x 12'9"
Area: 240 sq. ft
Counted as living area: Yes

Heated: Yes
Finished: Yes
Enclosed: Yes
Contiguous: Yes
Permitted: Yes
Wet space: No
Addition: No
Conversion: No

3141 South Brisbane Avenue, Milwaukee, Wisconsin
53207, United States

9 Floor 3 - W.I.C.



Dimensions: 15'9" x 2'8"
Area: 9 sq. ft
Counted as living area: Yes

Heated: Yes
Finished: Yes
Enclosed: Yes
Contiguous: Yes
Permitted: Yes
Wet space: No
Addition: No
Conversion: No