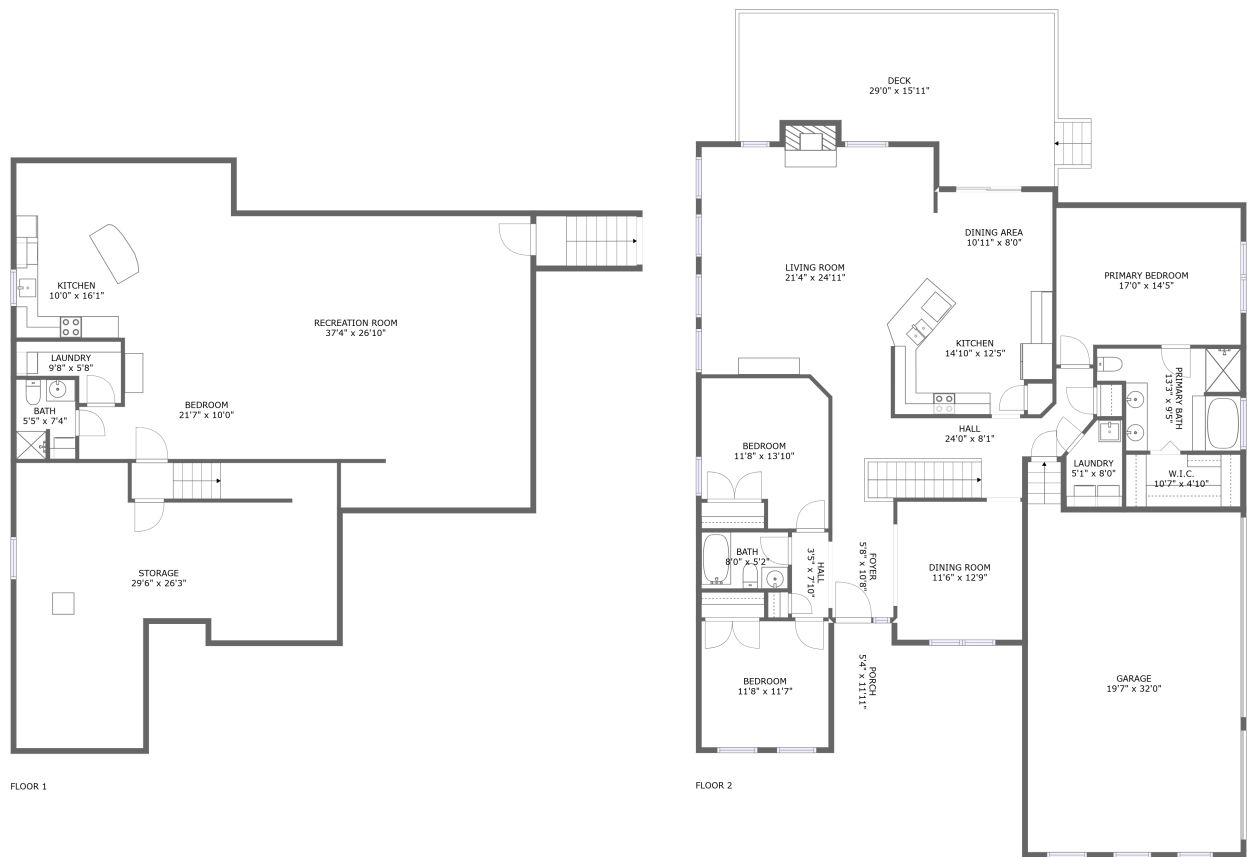




Home report


113 High Point Drive, Buffalo Township, Sarver, Butler County, Pennsylvania, United States, 16055




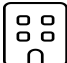
Property summary


**1** Garages


**4** Bedrooms

**3** Bathrooms

**0** Half baths

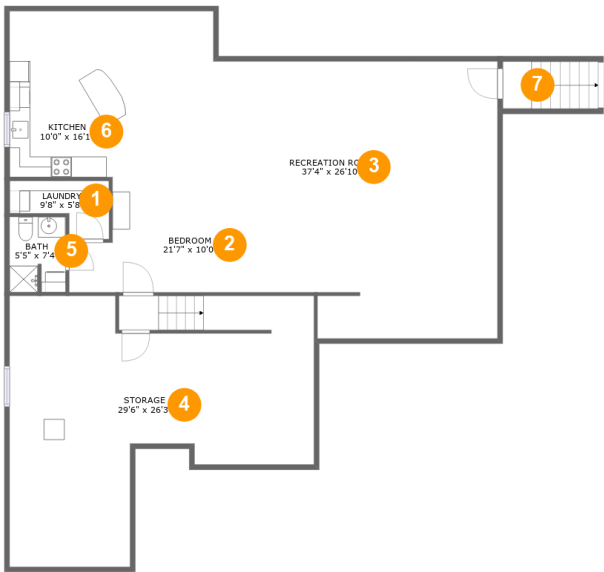
**2** Floors

**3,370** Gross living area sqft

**5,120** Total sqft

Home report

113 High Point Drive, Buffalo Township, Sarver, Butler County, Pennsylvania, United States, 16055



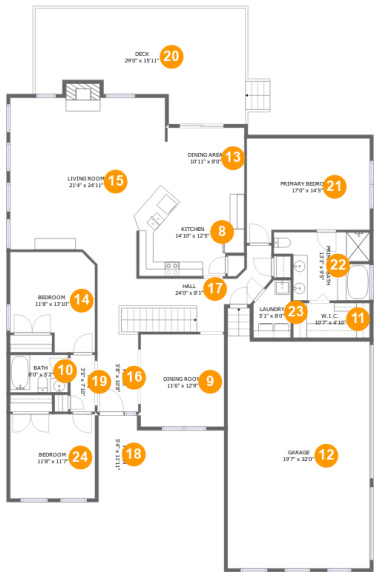
Room dimensions

Floor 1 Total sqft: 1941 Living area: 1315

#		Dimensions	sqft	Counted as living area
1	Laundry	9'8" x 5'8"	40 sq. ft	Yes
2	Bedroom	21'7" x 10'0"	194 sq. ft	Yes
3	Recreation Room	37'4" x 26'10"	784 sq. ft	Yes
4	Storage	29'6" x 26'3"	579 sq. ft	No
5	Bath	5'5" x 7'4"	39 sq. ft	Yes
6	Kitchen	10'0" x 16'1"	160 sq. ft	Yes
7	Outdoor	2'9" x 4'7"	43 sq. ft	No

Home report

113 High Point Drive, Buffalo Township, Sarver, Butler County, Pennsylvania, United States, 16055



Room dimensions

Floor 2 Total sqft: 3179 Living area: 2055

#		Dimensions	sqft	Counted as living area
8	Kitchen	14'10" x 12'5"	175 sq. ft	Yes
9	Dining Room	11'6" x 12'9"	146 sq. ft	Yes
10	Bath	8'0" x 5'2"	41 sq. ft	Yes
11	W.I.C.	10'7" x 4'10"	51 sq. ft	Yes
12	Garage	19'7" x 32'0"	626 sq. ft	No
13	Dining Area	10'11" x 8'0"	87 sq. ft	Yes
14	Bedroom	11'8" x 13'10"	143 sq. ft	Yes
15	Living Room	21'4" x 24'11"	445 sq. ft	Yes
16	Foyer	5'8" x 10'8"	60 sq. ft	Yes
17	Hall	24'0" x 8'1"	165 sq. ft	Yes
18	Porch	5'4" x 11'11"	63 sq. ft	No

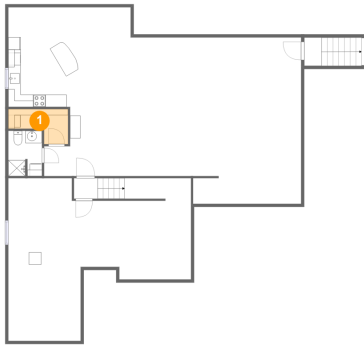
Home report

113 High Point Drive, Buffalo Township, Sarver, Butler County,
Pennsylvania, United States, 16055

#		Dimensions	sqft	Counted as living area
19	Hall	3'5" x 7'10"	26 sq. ft	Yes
20	Deck	29'0" x 15'11"	388 sq. ft	No
21	Primary Bedroom	17'0" x 14'5"	220 sq. ft	Yes
22	Primary Bath	13'3" x 9'5"	106 sq. ft	Yes
23	Laundry	5'1" x 8'0"	36 sq. ft	Yes
24	Bedroom	11'8" x 11'7"	136 sq. ft	Yes

113 High Point Drive, Buffalo Township, Sarver, Butler County,
Pennsylvania, United States, 16055

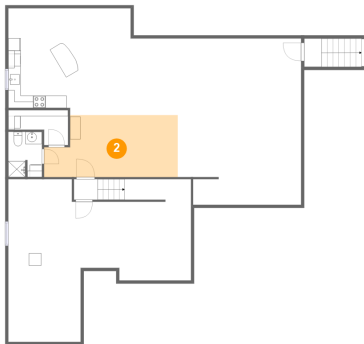
1 Floor 1 - Laundry



Dimensions: 9'8" x 5'8"
Area: 40 sq. ft
Counted as living area: Yes

Heated: Yes
Finished: Yes
Enclosed: Yes
Contiguous: Yes
Permitted: Yes
Wet space: No
Addition: No
Conversion: No

2 Floor 1 - Bedroom

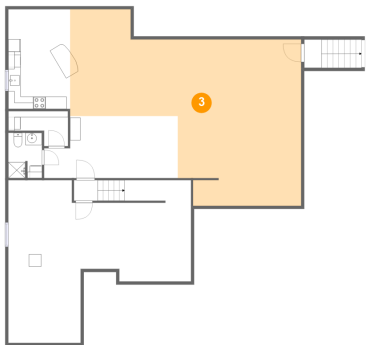


Dimensions: 21'7" x 10'0"
Area: 194 sq. ft
Counted as living area: Yes

Heated: Yes
Finished: Yes
Enclosed: Yes
Contiguous: Yes
Permitted: Yes
Wet space: No
Addition: No
Conversion: No

113 High Point Drive, Buffalo Township, Sarver, Butler County,
Pennsylvania, United States, 16055

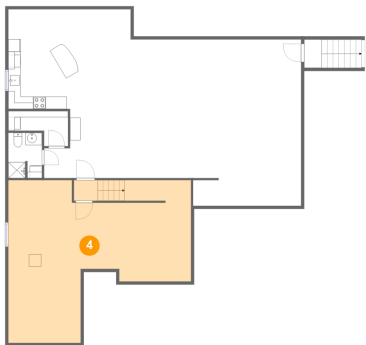
3 Floor 1 - Recreation Room



Dimensions: 37'4" x 26'10"
Area: 784 sq. ft
Counted as living area: Yes

Heated: Yes
Finished: Yes
Enclosed: Yes
Contiguous: Yes
Permitted: Yes
Wet space: No
Addition: No
Conversion: No

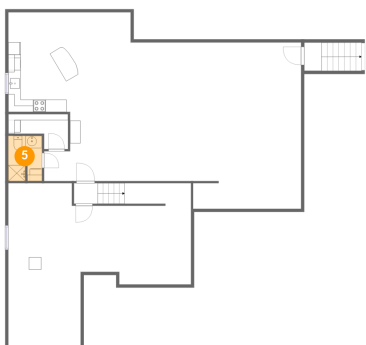
4 Floor 1 - Storage



Dimensions: 29'6" x 26'3"
Area: 579 sq. ft
Counted as living area: No

Heated: No
Finished: No
Enclosed: No
Contiguous: Yes
Permitted: Yes
Wet space: No
Addition: No
Conversion: No

5 Floor 1 - Bath

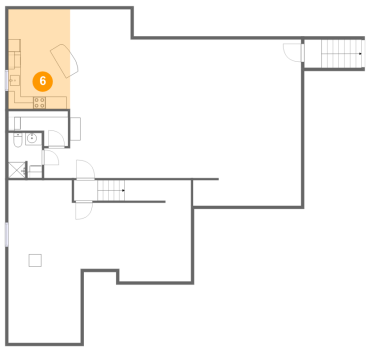


Dimensions: 5'5" x 7'4"
Area: 39 sq. ft
Counted as living area: Yes

Heated: Yes
Finished: Yes
Enclosed: Yes
Contiguous: Yes
Permitted: Yes
Wet space: Yes
Addition: No
Conversion: No

113 High Point Drive, Buffalo Township, Sarver, Butler County,
Pennsylvania, United States, 16055

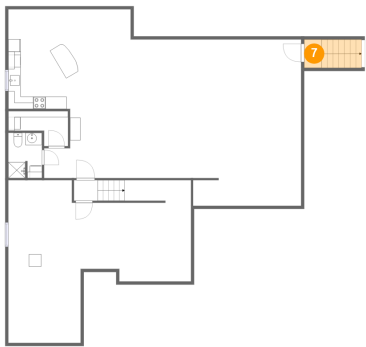
6 Floor 1 - Kitchen



Dimensions: 10'0" x 16'1"
Area: 160 sq. ft
Counted as living area: Yes

Heated: Yes
Finished: Yes
Enclosed: Yes
Contiguous: Yes
Permitted: Yes
Wet space: No
Addition: No
Conversion: No

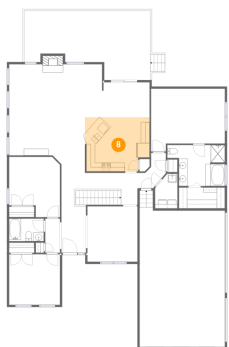
7 Floor 1 - Outdoor



Dimensions: 2'9" x 4'7"
Area: 43 sq. ft
Counted as living area: No

Heated: No
Finished: No
Enclosed: No
Contiguous: Yes
Permitted: No
Wet space: No
Addition: No
Conversion: No

8 Floor 2 - Kitchen

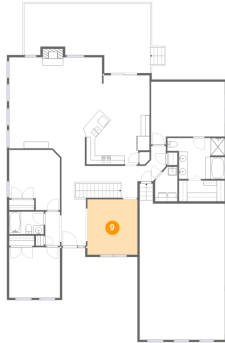


Dimensions: 14'10" x 12'5"
Area: 175 sq. ft
Counted as living area: Yes

Heated: Yes
Finished: Yes
Enclosed: Yes
Contiguous: Yes
Permitted: Yes
Wet space: No
Addition: No
Conversion: No

113 High Point Drive, Buffalo Township, Sarver, Butler County,
Pennsylvania, United States, 16055

9 Floor 2 - Dining Room



Dimensions: 11'6" x 12'9"
Area: 146 sq. ft
Counted as living area: Yes

Heated: Yes
Finished: Yes
Enclosed: Yes
Contiguous: Yes
Permitted: Yes
Wet space: No
Addition: No
Conversion: No

10 Floor 2 - Bath



Dimensions: 8'0" x 5'2"
Area: 41 sq. ft
Counted as living area: Yes

Heated: Yes
Finished: Yes
Enclosed: Yes
Contiguous: Yes
Permitted: Yes
Wet space: Yes
Addition: No
Conversion: No

11 Floor 2 - W.I.C.

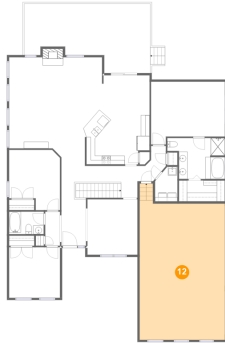


Dimensions: 10'7" x 4'10"
Area: 51 sq. ft
Counted as living area: Yes

Heated: Yes
Finished: Yes
Enclosed: Yes
Contiguous: Yes
Permitted: Yes
Wet space: No
Addition: No
Conversion: No

113 High Point Drive, Buffalo Township, Sarver, Butler County,
Pennsylvania, United States, 16055

12 Floor 2 - Garage



Dimensions: 19'7" x 32'0"
Area: 626 sq. ft
Counted as living area: No

Heated: No
Finished: No
Enclosed: Yes
Contiguous: Yes
Permitted: Yes
Wet space: No
Addition: No
Conversion: No

13 Floor 2 - Dining Area



Dimensions: 10'11" x 8'0"
Area: 87 sq. ft
Counted as living area: Yes

Heated: Yes
Finished: Yes
Enclosed: Yes
Contiguous: Yes
Permitted: Yes
Wet space: No
Addition: No
Conversion: No

14 Floor 2 - Bedroom

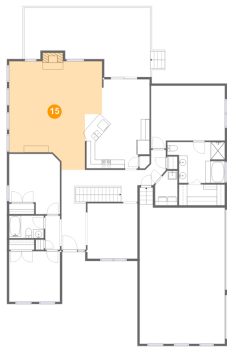


Dimensions: 11'8" x 13'10"
Area: 143 sq. ft
Counted as living area: Yes

Heated: Yes
Finished: Yes
Enclosed: Yes
Contiguous: Yes
Permitted: Yes
Wet space: No
Addition: No
Conversion: No

113 High Point Drive, Buffalo Township, Sarver, Butler County,
Pennsylvania, United States, 16055

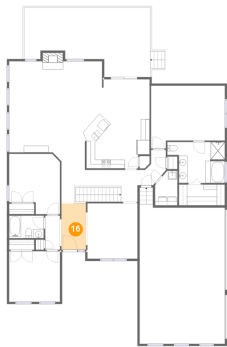
15 Floor 2 - Living Room



Dimensions: 21'4" x 24'11"
Area: 445 sq. ft
Counted as living area: Yes

Heated: Yes
Finished: Yes
Enclosed: Yes
Contiguous: Yes
Permitted: Yes
Wet space: No
Addition: No
Conversion: No

16 Floor 2 - Foyer



Dimensions: 5'8" x 10'8"
Area: 60 sq. ft
Counted as living area: Yes

Heated: Yes
Finished: Yes
Enclosed: Yes
Contiguous: Yes
Permitted: Yes
Wet space: No
Addition: No
Conversion: No

17 Floor 2 - Hall

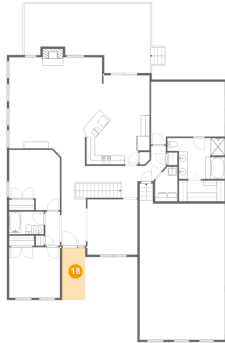


Dimensions: 24'0" x 8'1"
Area: 165 sq. ft
Counted as living area: Yes

Heated: Yes
Finished: Yes
Enclosed: Yes
Contiguous: Yes
Permitted: Yes
Wet space: No
Addition: No
Conversion: No

113 High Point Drive, Buffalo Township, Sarver, Butler County,
Pennsylvania, United States, 16055

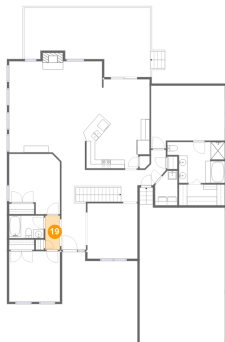
18 Floor 2 - Porch



Dimensions: 5'4" x 11'11"
Area: 63 sq. ft
Counted as living area: No

Heated: No
Finished: Yes
Enclosed: No
Contiguous: Yes
Permitted: Yes
Wet space: No
Addition: No
Conversion: No

19 Floor 2 - Hall



Dimensions: 3'5" x 7'10"
Area: 26 sq. ft
Counted as living area: Yes

Heated: Yes
Finished: Yes
Enclosed: Yes
Contiguous: Yes
Permitted: Yes
Wet space: No
Addition: No
Conversion: No

20 Floor 2 - Deck

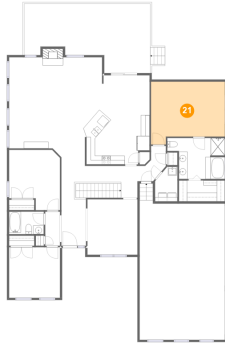


Dimensions: 29'0" x 15'11"
Area: 388 sq. ft
Counted as living area: No

Heated: No
Finished: Yes
Enclosed: No
Contiguous: Yes
Permitted: Yes
Wet space: No
Addition: No
Conversion: No

113 High Point Drive, Buffalo Township, Sarver, Butler County,
Pennsylvania, United States, 16055

21 Floor 2 - Primary Bedroom



Dimensions: 17'0" x 14'5"
Area: 220 sq. ft
Counted as living area: Yes

Heated: Yes
Finished: Yes
Enclosed: Yes
Contiguous: Yes
Permitted: Yes
Wet space: No
Addition: No
Conversion: No

22 Floor 2 - Primary Bath



Dimensions: 13'3" x 9'5"
Area: 106 sq. ft
Counted as living area: Yes

Heated: Yes
Finished: Yes
Enclosed: Yes
Contiguous: Yes
Permitted: Yes
Wet space: Yes
Addition: No
Conversion: No

23 Floor 2 - Laundry

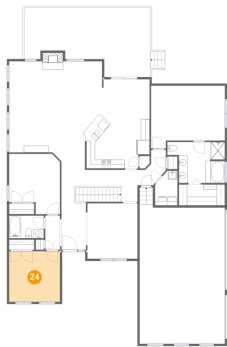


Dimensions: 5'1" x 8'0"
Area: 36 sq. ft
Counted as living area: Yes

Heated: Yes
Finished: Yes
Enclosed: Yes
Contiguous: Yes
Permitted: Yes
Wet space: No
Addition: No
Conversion: No

113 High Point Drive, Buffalo Township, Sarver, Butler County,
Pennsylvania, United States, 16055

24 Floor 2 - Bedroom



Dimensions: 11'8" x 11'7"
Area: 136 sq. ft
Counted as living area: Yes

Heated: Yes
Finished: Yes
Enclosed: Yes
Contiguous: Yes
Permitted: Yes
Wet space: No
Addition: No
Conversion: No