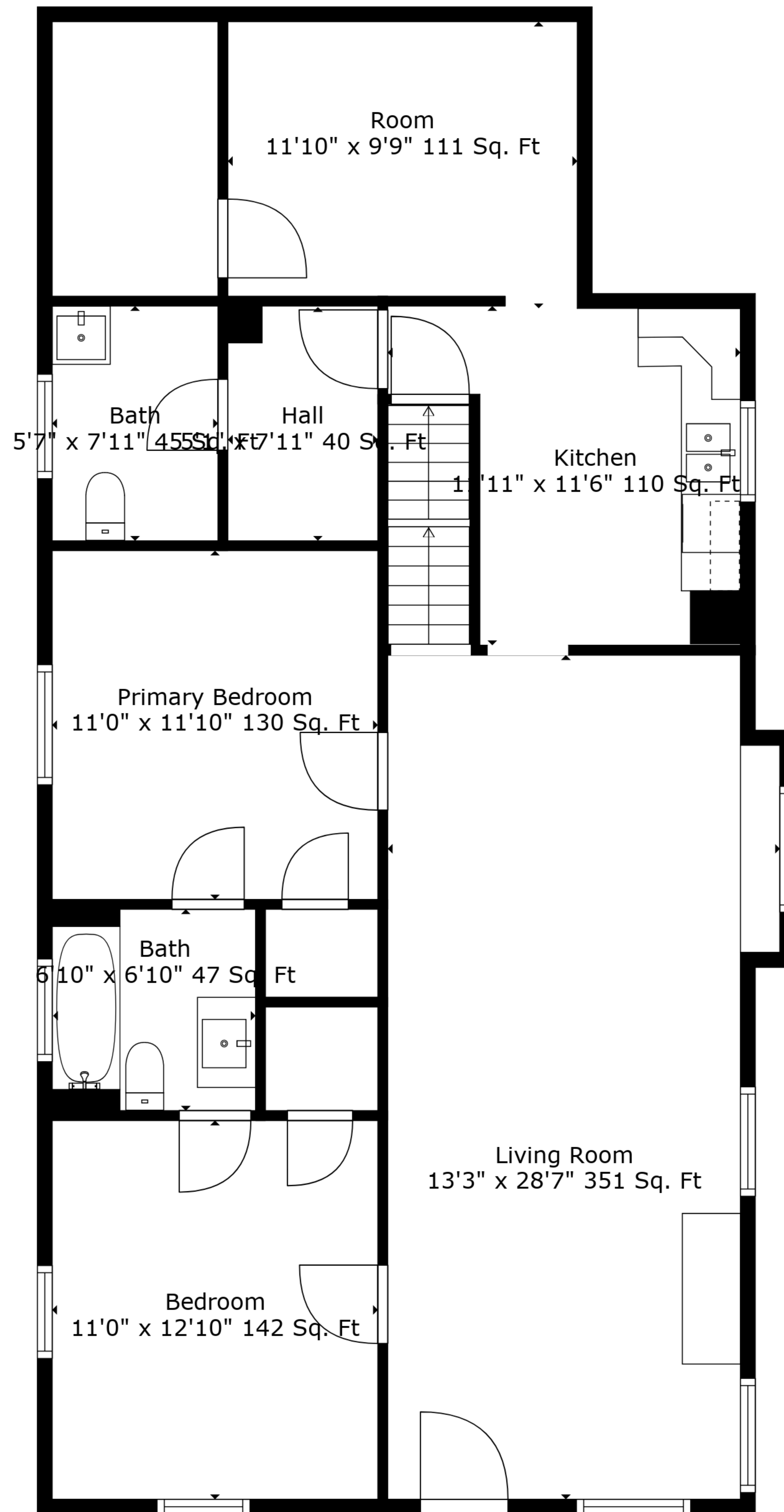


Basement
23'4" x 40'4" 941 Sq. Ft

TOTAL: 1269 sq. ft
BELOW GROUND: 0 sq. ft, FLOOR 2: 1126 sq. ft, FLOOR 3: 143 sq. ft
EXCLUDED AREAS: BASEMENT: 941 sq. ft

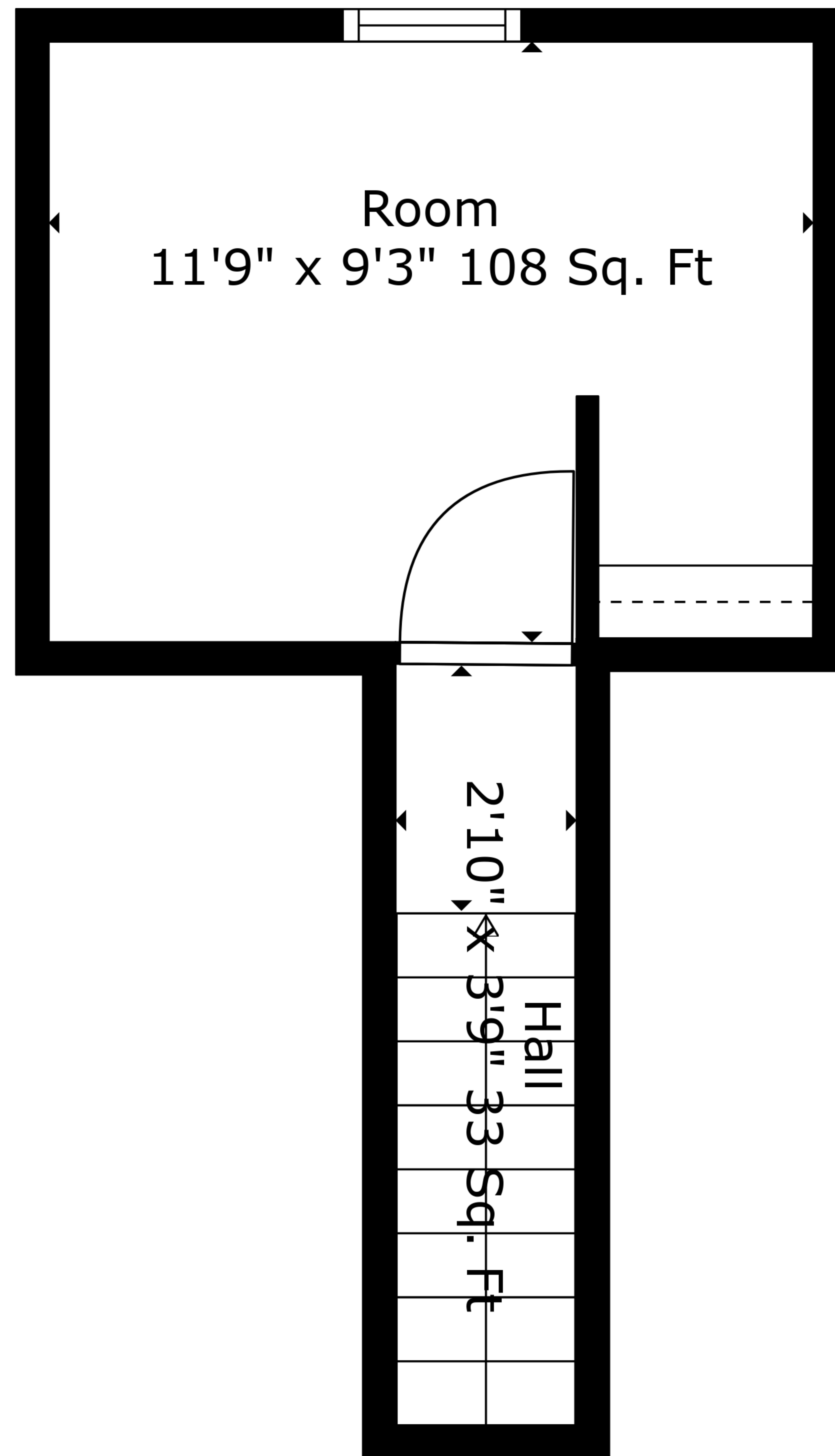
Measurements Are Deemed Highly Reliable But Not Guaranteed.



TOTAL: 1269 sq. ft

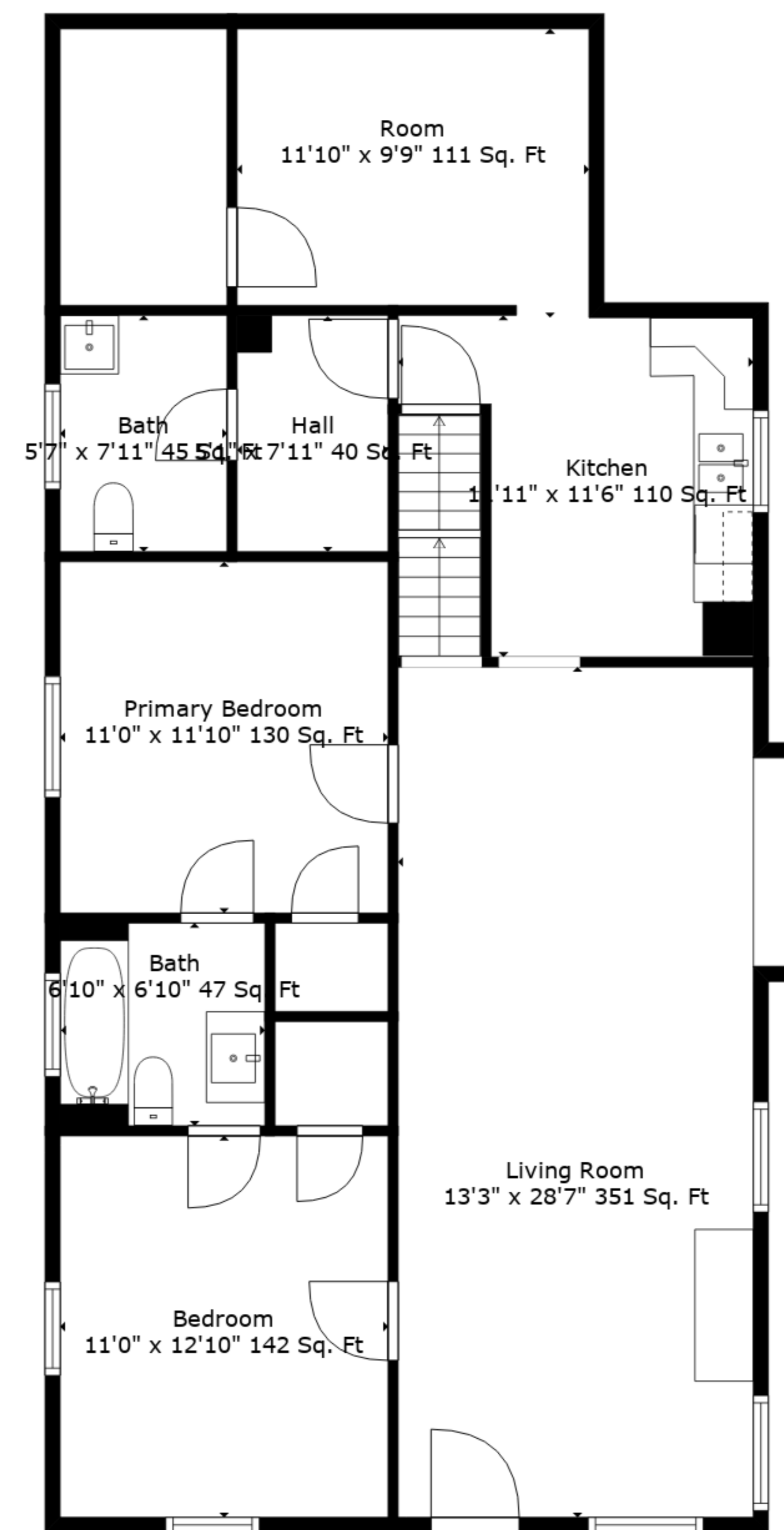
BELOW GROUND: 0 sq. ft, FLOOR 2: 1126 sq. ft, FLOOR 3: 143 sq. ft
 EXCLUDED AREAS: BASEMENT: 941 sq. ft

Measurements Are Deemed Highly Reliable But Not Guaranteed.

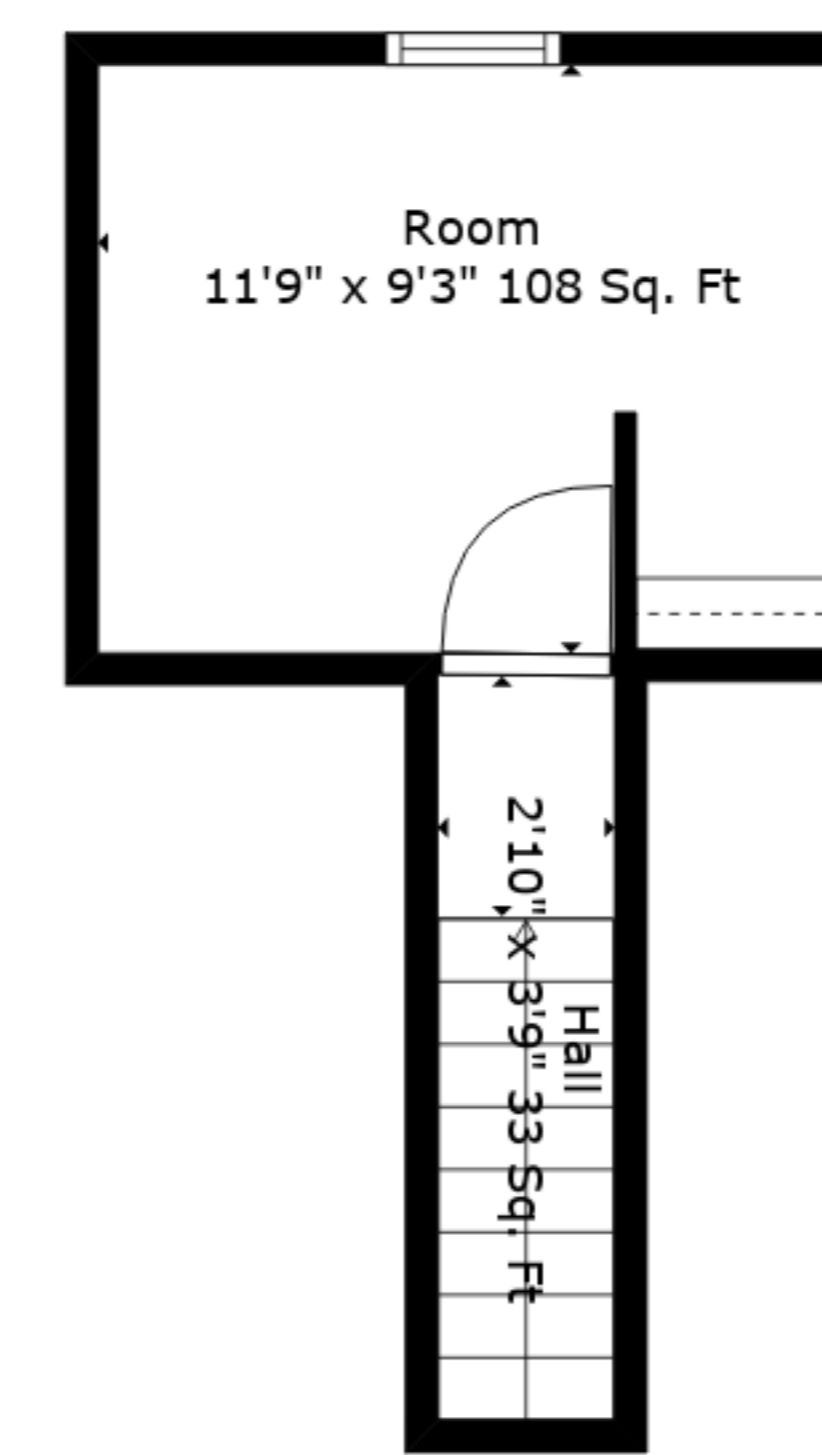


TOTAL: 1269 sq. ft
BELOW GROUND: 0 sq. ft, FLOOR 2: 1126 sq. ft, FLOOR 3: 143 sq. ft
EXCLUDED AREAS: BASEMENT: 941 sq. ft

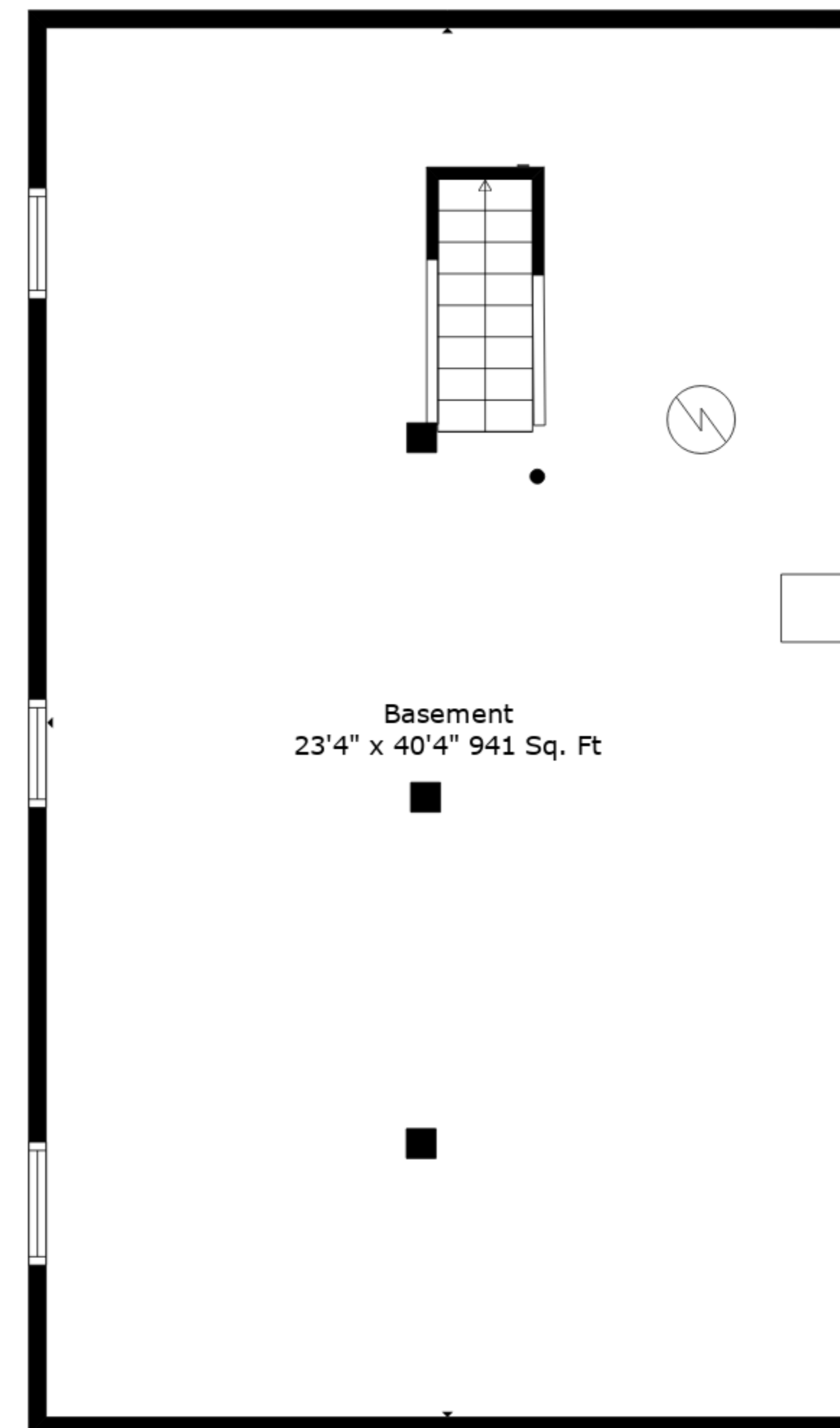
Measurements Are Deemed Highly Reliable But Not Guaranteed.



Floor 2



Floor 3



Floor 1

TOTAL: 1269 sq. ft
 BELOW GROUND: 0 sq. ft, FLOOR 2: 1126 sq. ft, FLOOR 3: 143 sq. ft
 EXCLUDED AREAS: BASEMENT: 941 sq. ft

Measurements Are Deemed Highly Reliable But Not Guaranteed.