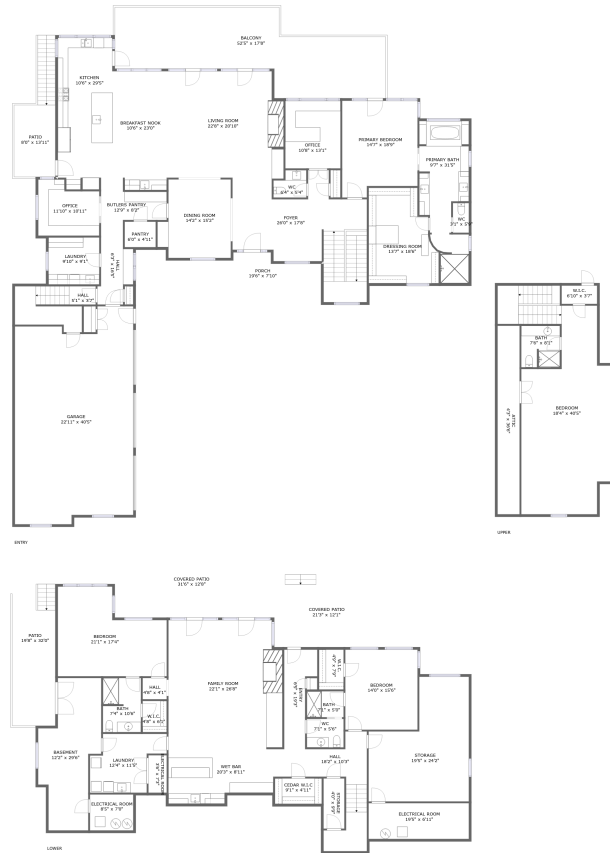


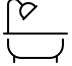



405 Island View Drive, Penhook, Franklin County, Virginia, United States, 24137

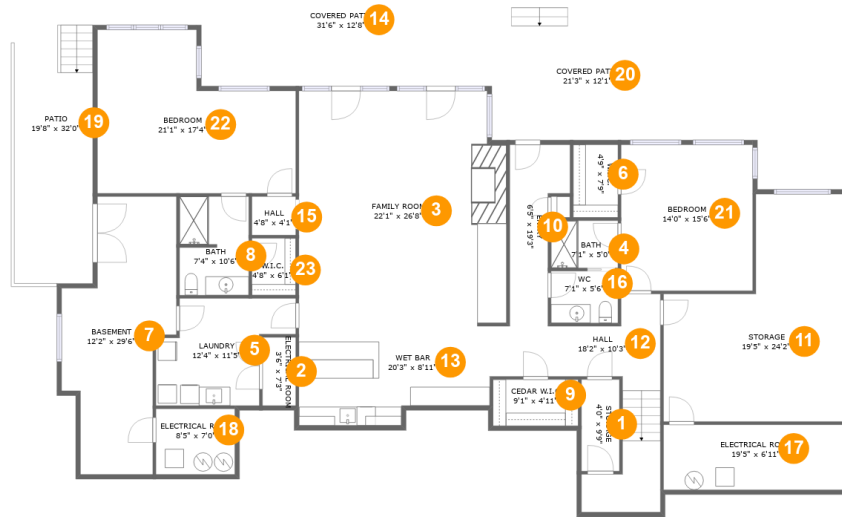


Property Summary

 **1** garages  **4** bedrooms  **4** bathrooms  **1** half baths

 **3** floors  **6,213** Gross Living Area sqft  **10,199** total sqft

405 Island View Drive, Penhook, Franklin County, Virginia, United States, 24137



Room Dimensions

Floor 1

Total sqft: 4063

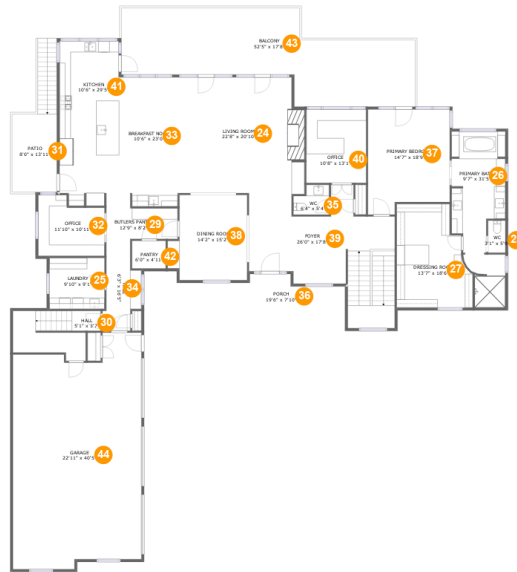
Living area: 2119

#	Room name	Dimensions	Area (sqft)	Counted as Living Area
1	Storage	4'0" x 9'9"	39 sq. ft	No
2	Electrical Room	3'6" x 7'3"	26 sq. ft	No
3	Family Room	22'1" x 26'8"	573 sq. ft	Yes
4	Bath	7'1" x 5'0"	36 sq. ft	Yes
5	Laundry	12'4" x 11'5"	129 sq. ft	Yes
6	W.i.c.	4'9" x 7'9"	37 sq. ft	Yes
7	Basement	12'2" x 29'6"	268 sq. ft	No
8	Bath	7'4" x 10'6"	76 sq. ft	Yes
9	Cedar W.i.c	9'1" x 4'11"	45 sq. ft	Yes
10	Entry	6'5" x 19'3"	90 sq. ft	Yes
11	Storage	19'5" x 24'2"	365 sq. ft	No

**405 Island View Drive, Penhook, Franklin
County, Virginia, United States, 24137**

#	Room name	Dimensions	Area (sqft)	Counted as Living Area
12	Hall	18'2" x 10'3"	187 sq. ft	Yes
13	Wet Bar	20'3" x 8'11"	160 sq. ft	Yes
14	Covered Patio	31'6" x 12'8"	394 sq. ft	No
15	Hall	4'8" x 4'1"	19 sq. ft	Yes
16	Wc	7'1" x 5'6"	39 sq. ft	Yes
17	Electrical Room	19'5" x 6'11"	134 sq. ft	No
18	Electrical Room	8'5" x 7'0"	58 sq. ft	No
19	Patio	19'8" x 32'0"	330 sq. ft	No
20	Covered Patio	21'3" x 12'1"	257 sq. ft	No
21	Bedroom	14'0" x 15'6"	217 sq. ft	Yes
22	Bedroom	21'1" x 17'4"	298 sq. ft	Yes
23	W.i.c.	4'8" x 6'1"	28 sq. ft	Yes

405 Island View Drive, Penhook, Franklin County, Virginia, United States, 24137



Room Dimensions

Floor 2

Total sqft: 5133

Living area: 3267

#	Room name	Dimensions	Area (sqft)	Counted as Living Area
24	Living Room	22'8" x 20'10"	455 sq. ft	Yes
25	Laundry	9'10" x 9'1"	90 sq. ft	Yes
26	Primary Bath	9'7" x 31'5"	235 sq. ft	Yes
27	Dressing Room	13'7" x 18'6"	216 sq. ft	Yes
28	Wc	3'1" x 5'9"	18 sq. ft	Yes
29	Butlers Pantry	12'9" x 8'2"	81 sq. ft	Yes
30	Hall	5'1" x 3'7"	108 sq. ft	Yes
31	Patio	8'0" x 13'11"	169 sq. ft	No
32	Office	11'10" x 10'11"	114 sq. ft	Yes
33	Breakfast Nook	10'6" x 23'0"	237 sq. ft	Yes
34	Hall	6'3" x 16'5"	86 sq. ft	Yes

Scan captured on Wed, 11 Sep 2024 21:13:54 GMT

Information is calculated by CubiCasa technology; deemed highly reliable but not guaranteed.

**405 Island View Drive, Penhook, Franklin
County, Virginia, United States, 24137**

#	Room name	Dimensions	Area (sqft)	Counted as Living Area
35	Wc	6'4" x 5'4"	29 sq. ft	Yes
36	Porch	19'6" x 7'10"	127 sq. ft	No
37	Primary Bedroom	14'7" x 18'9"	252 sq. ft	Yes
38	Dining Room	14'2" x 15'2"	194 sq. ft	Yes
39	Foyer	26'0" x 17'8"	412 sq. ft	Yes
40	Office	10'8" x 13'1"	140 sq. ft	Yes
41	Kitchen	10'6" x 29'5"	300 sq. ft	Yes
42	Pantry	6'0" x 4'11"	30 sq. ft	Yes
43	Balcony	52'5" x 17'8"	630 sq. ft	No
44	Garage	22'11" x 40'5"	873 sq. ft	No

405 Island View Drive, Penhook, Franklin County, Virginia, United States, 24137



Room Dimensions

Floor 3**Total sqft: 1003****Living area: 827**

#	Room name	Dimensions	Area (sqft)	Counted as Living Area
45	Bedroom	18'4" x 40'5"	670 sq. ft	Yes
46	Bath	7'6" x 8'1"	59 sq. ft	Yes
47	Attic	4'3" x 36'6"	156 sq. ft	No
48	W.i.c.	6'10" x 3'7"	24 sq. ft	Yes

405 Island View Drive, Penhook, Franklin County, Virginia, United States, 24137

1 Floor 1 - Storage



Dimensions: 4'0" x 9'9"
Area: 39 sq. ft
Counted as Living Area: No

Heated: No
Finished: No
Enclosed: No
Contiguous: No
Permitted: Yes
Wet Space: No
Addition: No
Conversion: No

2 Floor 1 - Electrical Room

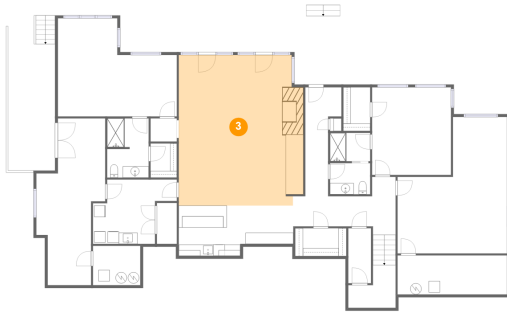


Dimensions: 3'6" x 7'3"
Area: 26 sq. ft
Counted as Living Area: No

Heated: No
Finished: No
Enclosed: Yes
Contiguous: Yes
Permitted: Yes
Wet Space: No
Addition: No
Conversion: No

405 Island View Drive, Penhook, Franklin County, Virginia, United States, 24137

3 Floor 1 - Family Room



Dimensions: 22'1" x 26'8"
Area: 573 sq. ft
Counted as Living Area:
Yes

Heated: Yes
Finished: Yes
Enclosed: Yes
Contiguous:
Yes
Permitted: Yes
Wet Space: No
Addition: No
Conversion: No

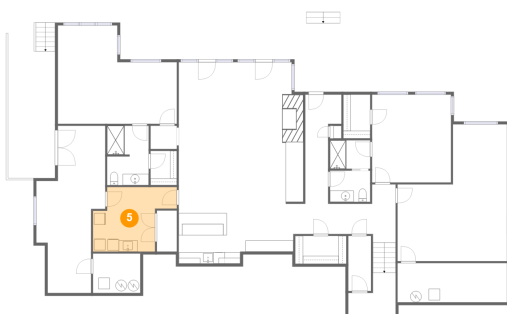
4 Floor 1 - Bath



Dimensions: 7'1" x 5'0"
Area: 36 sq. ft
Counted as Living Area:
Yes

Heated: Yes
Finished: Yes
Enclosed: Yes
Contiguous:
Yes
Permitted: Yes
Wet Space: Yes
Addition: No
Conversion: No

5 Floor 1 - Laundry



Dimensions: 12'4" x 11'5"
Area: 129 sq. ft
Counted as Living Area:
Yes

Heated: Yes
Finished: Yes
Enclosed: Yes
Contiguous:
Yes
Permitted: Yes
Wet Space: No
Addition: No
Conversion: No

405 Island View Drive, Penhook, Franklin County, Virginia, United States, 24137

6 Floor 1 - W.i.c.



Dimensions: 4'9" x 7'9"
Area: 37 sq. ft
Counted as Living Area:
Yes

Heated: Yes
Finished: Yes
Enclosed: Yes
Contiguous:
Yes
Permitted: Yes
Wet Space: No
Addition: No
Conversion: No

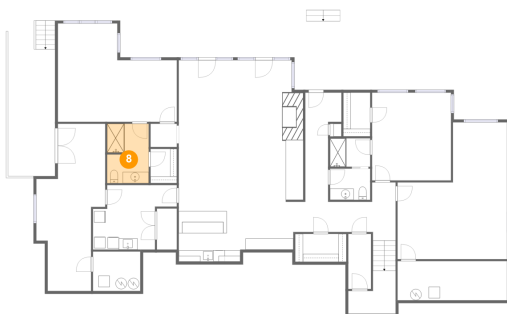
7 Floor 1 - Basement



Dimensions: 12'2" x 29'6"
Area: 268 sq. ft
Counted as Living Area: No

Heated: Yes
Finished: No
Enclosed: Yes
Contiguous: Yes
Permitted: Yes
Wet Space: No
Addition: No
Conversion: No

8 Floor 1 - Bath



Dimensions: 7'4" x 10'6"
Area: 76 sq. ft
Counted as Living Area:
Yes

Heated: Yes
Finished: Yes
Enclosed: Yes
Contiguous:
Yes
Permitted: Yes
Wet Space: Yes
Addition: No
Conversion: No

405 Island View Drive, Penhook, Franklin County, Virginia, United States, 24137

9 Floor 1 - Cedar W.i.c



Dimensions: 9'1" x 4'11"
Area: 45 sq. ft
Counted as Living Area:
Yes

Heated: Yes
Finished: Yes
Enclosed: Yes
Contiguous:
Yes
Permitted: Yes
Wet Space: No
Addition: No
Conversion: No

10 Floor 1 - Entry



Dimensions: 6'5" x 19'3"
Area: 90 sq. ft
Counted as Living Area:
Yes

Heated: Yes
Finished: Yes
Enclosed: Yes
Contiguous:
Yes
Permitted: Yes
Wet Space: No
Addition: No
Conversion: No

11 Floor 1 - Storage



Dimensions: 19'5" x 24'2"
Area: 365 sq. ft
Counted as Living Area: No

Heated: No
Finished: No
Enclosed: No
Contiguous: No
Permitted: Yes
Wet Space: No
Addition: No
Conversion: No

405 Island View Drive, Penhook, Franklin County, Virginia, United States, 24137

12 Floor 1 - Hall



Dimensions: 18'2" x 10'3"
Area: 187 sq. ft
Counted as Living Area:
Yes

Heated: Yes
Finished: Yes
Enclosed: Yes
Contiguous:
Yes
Permitted: Yes
Wet Space: No
Addition: No
Conversion: No

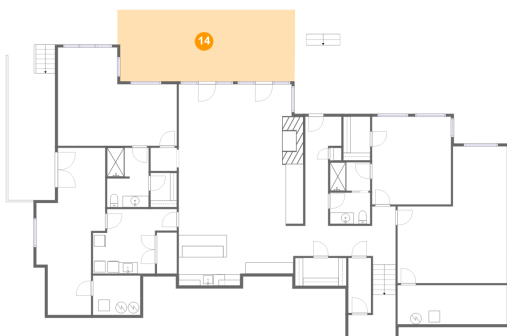
13 Floor 1 - Wet Bar



Dimensions: 20'3" x 8'11"
Area: 160 sq. ft
Counted as Living Area:
Yes

Heated: Yes
Finished: Yes
Enclosed: Yes
Contiguous:
Yes
Permitted: Yes
Wet Space: No
Addition: No
Conversion: No

14 Floor 1 - Covered Patio



Dimensions: 31'6" x 12'8"
Area: 394 sq. ft
Counted as Living Area: No

Heated: No
Finished: Yes
Enclosed: No
Contiguous: Yes
Permitted: Yes
Wet Space: No
Addition: No
Conversion: No

405 Island View Drive, Penhook, Franklin County, Virginia, United States, 24137

15 Floor 1 - Hall



Dimensions: 4'8" x 4'1"
Area: 19 sq. ft
Counted as Living Area:
Yes

Heated: Yes
Finished: Yes
Enclosed: Yes
Contiguous:
Yes
Permitted: Yes
Wet Space: No
Addition: No
Conversion: No

16 Floor 1 - Wc



Dimensions: 7'1" x 5'6"
Area: 39 sq. ft
Counted as Living Area:
Yes

Heated: Yes
Finished: Yes
Enclosed: Yes
Contiguous:
Yes
Permitted: Yes
Wet Space: Yes
Addition: No
Conversion: No

17 Floor 1 - Electrical Room

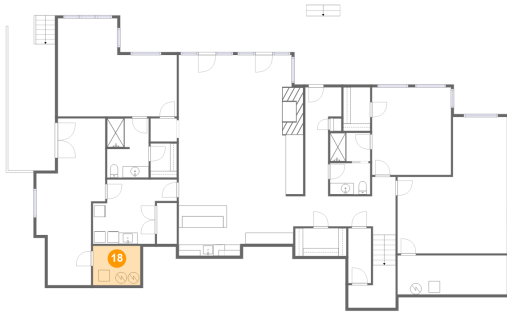


Dimensions: 19'5" x 6'11"
Area: 134 sq. ft
Counted as Living Area: No

Heated: No
Finished: No
Enclosed: Yes
Contiguous: Yes
Permitted: Yes
Wet Space: No
Addition: No
Conversion: No

405 Island View Drive, Penhook, Franklin County, Virginia, United States, 24137

18 Floor 1 - Electrical Room



Dimensions: 8'5" x 7'0"
Area: 58 sq. ft
Counted as Living Area: No

Heated: No
Finished: No
Enclosed: Yes
Contiguous: Yes
Permitted: Yes
Wet Space: No
Addition: No
Conversion: No

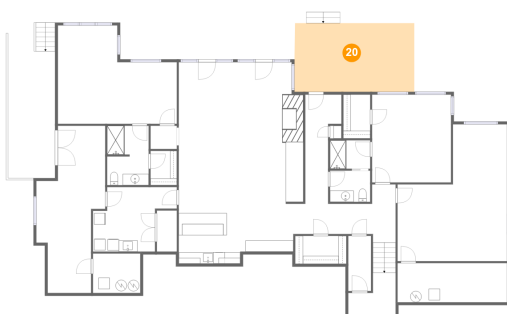
19 Floor 1 - Patio



Dimensions: 19'8" x 32'0"
Area: 330 sq. ft
Counted as Living Area: No

Heated: No
Finished: Yes
Enclosed: No
Contiguous: Yes
Permitted: Yes
Wet Space: No
Addition: No
Conversion: No

20 Floor 1 - Covered Patio



Dimensions: 21'3" x 12'1"
Area: 257 sq. ft
Counted as Living Area: No

Heated: No
Finished: Yes
Enclosed: No
Contiguous: Yes
Permitted: Yes
Wet Space: No
Addition: No
Conversion: No

405 Island View Drive, Penhook, Franklin County, Virginia, United States, 24137

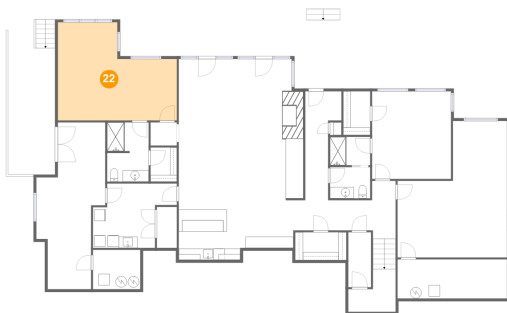
21 Floor 1 - Bedroom



Dimensions: 14'0" x 15'6"
Area: 217 sq. ft
Counted as Living Area:
Yes

Heated: Yes
Finished: Yes
Enclosed: Yes
Contiguous:
Yes
Permitted: Yes
Wet Space: No
Addition: No
Conversion: No

22 Floor 1 - Bedroom



Dimensions: 21'1" x 17'4"
Area: 298 sq. ft
Counted as Living Area:
Yes

Heated: Yes
Finished: Yes
Enclosed: Yes
Contiguous:
Yes
Permitted: Yes
Wet Space: No
Addition: No
Conversion: No

23 Floor 1 - W.i.c.

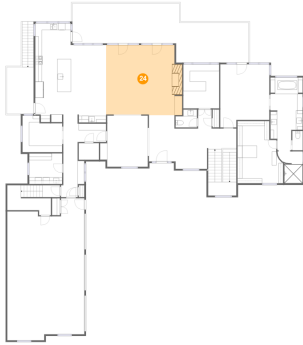


Dimensions: 4'8" x 6'1"
Area: 28 sq. ft
Counted as Living Area:
Yes

Heated: Yes
Finished: Yes
Enclosed: Yes
Contiguous:
Yes
Permitted: Yes
Wet Space: No
Addition: No
Conversion: No

405 Island View Drive, Penhook, Franklin County, Virginia, United States, 24137

24 Floor 2 - Living Room



Dimensions: 22'8" x 20'10"
Area: 455 sq. ft
Counted as Living Area:
Yes

Heated: Yes
Finished: Yes
Enclosed: Yes
Contiguous:
Yes
Permitted: Yes
Wet Space: No
Addition: No
Conversion: No

25 Floor 2 - Laundry



Dimensions: 9'10" x 9'1"
Area: 90 sq. ft
Counted as Living Area:
Yes

Heated: Yes
Finished: Yes
Enclosed: Yes
Contiguous:
Yes
Permitted: Yes
Wet Space: No
Addition: No
Conversion: No

26 Floor 2 - Primary Bath

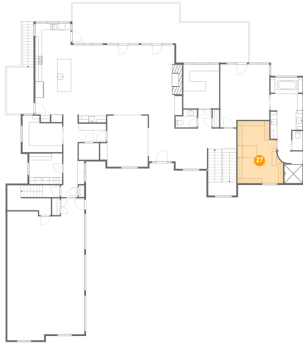


Dimensions: 9'7" x 31'5"
Area: 235 sq. ft
Counted as Living Area:
Yes

Heated: Yes
Finished: Yes
Enclosed: Yes
Contiguous:
Yes
Permitted: Yes
Wet Space: Yes
Addition: No
Conversion: No

405 Island View Drive, Penhook, Franklin County, Virginia, United States, 24137

27 Floor 2 - Dressing Room



Dimensions: 13'7" x 18'6"
Area: 216 sq. ft
Counted as Living Area:
Yes

Heated: Yes
Finished: Yes
Enclosed: Yes
Contiguous:
Yes
Permitted: Yes
Wet Space: No
Addition: No
Conversion: No

28 Floor 2 - Wc



Dimensions: 3'1" x 5'9"
Area: 18 sq. ft
Counted as Living Area:
Yes

Heated: Yes
Finished: Yes
Enclosed: Yes
Contiguous:
Yes
Permitted: Yes
Wet Space: Yes
Addition: No
Conversion: No

29 Floor 2 - Butlers Pantry

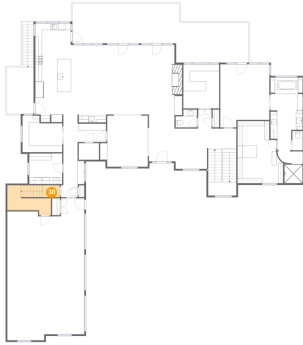


Dimensions: 12'9" x 8'2"
Area: 81 sq. ft
Counted as Living Area:
Yes

Heated: Yes
Finished: Yes
Enclosed: Yes
Contiguous:
Yes
Permitted: Yes
Wet Space: No
Addition: No
Conversion: No

405 Island View Drive, Penhook, Franklin County, Virginia, United States, 24137

30 Floor 2 - Hall



Dimensions: 5'1" x 3'7"
Area: 108 sq. ft
Counted as Living Area:
Yes

Heated: Yes
Finished: Yes
Enclosed: Yes
Contiguous:
Yes
Permitted: Yes
Wet Space: No
Addition: No
Conversion: No

31 Floor 2 - Patio



Dimensions: 8'0" x 13'11"
Area: 169 sq. ft
Counted as Living Area: No

Heated: No
Finished: Yes
Enclosed: No
Contiguous: Yes
Permitted: Yes
Wet Space: No
Addition: No
Conversion: No

32 Floor 2 - Office

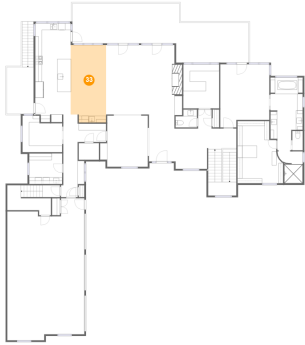


Dimensions: 11'10" x 10'11"
Area: 114 sq. ft
Counted as Living Area:
Yes

Heated: Yes
Finished: Yes
Enclosed: Yes
Contiguous:
Yes
Permitted: Yes
Wet Space: No
Addition: No
Conversion: No

405 Island View Drive, Penhook, Franklin County, Virginia, United States, 24137

33 Floor 2 - Breakfast Nook



Dimensions: 10'6" x 23'0"
Area: 237 sq. ft
Counted as Living Area:
Yes

Heated: Yes
Finished: Yes
Enclosed: Yes
Contiguous:
Yes
Permitted: Yes
Wet Space: No
Addition: No
Conversion: No

34 Floor 2 - Hall



Dimensions: 6'3" x 16'5"
Area: 86 sq. ft
Counted as Living Area:
Yes

Heated: Yes
Finished: Yes
Enclosed: Yes
Contiguous:
Yes
Permitted: Yes
Wet Space: No
Addition: No
Conversion: No

35 Floor 2 - Wc

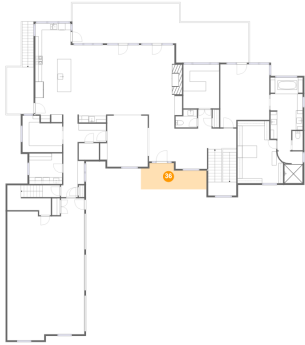


Dimensions: 6'4" x 5'4"
Area: 29 sq. ft
Counted as Living Area:
Yes

Heated: Yes
Finished: Yes
Enclosed: Yes
Contiguous:
Yes
Permitted: Yes
Wet Space: Yes
Addition: No
Conversion: No

405 Island View Drive, Penhook, Franklin County, Virginia, United States, 24137

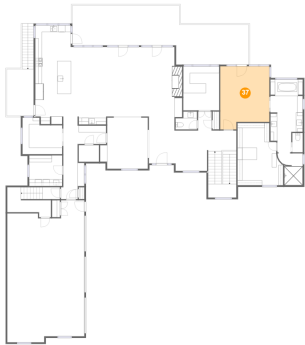
36 Floor 2 - Porch



Dimensions: 19'6" x 7'10"
Area: 127 sq. ft
Counted as Living Area: No

Heated: No
Finished: Yes
Enclosed: No
Contiguous: Yes
Permitted: Yes
Wet Space: No
Addition: No
Conversion: No

37 Floor 2 - Primary Bedroom



Dimensions: 14'7" x 18'9"
Area: 252 sq. ft
Counted as Living Area: Yes

Heated: Yes
Finished: Yes
Enclosed: Yes
Contiguous: Yes
Permitted: Yes
Wet Space: No
Addition: No
Conversion: No

38 Floor 2 - Dining Room

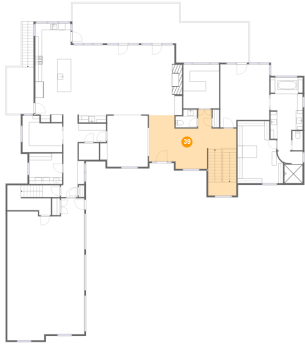


Dimensions: 14'2" x 15'2"
Area: 194 sq. ft
Counted as Living Area: Yes

Heated: Yes
Finished: Yes
Enclosed: Yes
Contiguous: Yes
Permitted: Yes
Wet Space: No
Addition: No
Conversion: No

405 Island View Drive, Penhook, Franklin County, Virginia, United States, 24137

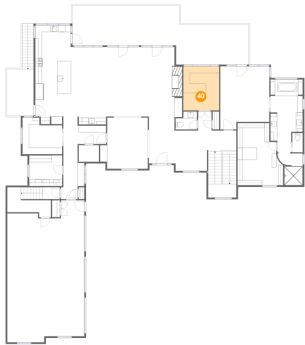
39 Floor 2 - Foyer



Dimensions: 26'0" x 17'8"
Area: 412 sq. ft
Counted as Living Area:
Yes

Heated: Yes
Finished: Yes
Enclosed: Yes
Contiguous:
Yes
Permitted: Yes
Wet Space: No
Addition: No
Conversion: No

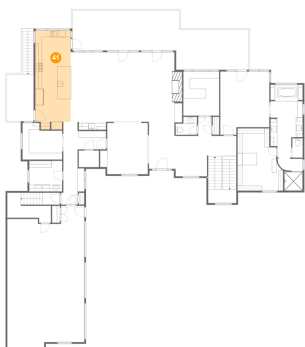
40 Floor 2 - Office



Dimensions: 10'8" x 13'1"
Area: 140 sq. ft
Counted as Living Area:
Yes

Heated: Yes
Finished: Yes
Enclosed: Yes
Contiguous:
Yes
Permitted: Yes
Wet Space: No
Addition: No
Conversion: No

41 Floor 2 - Kitchen

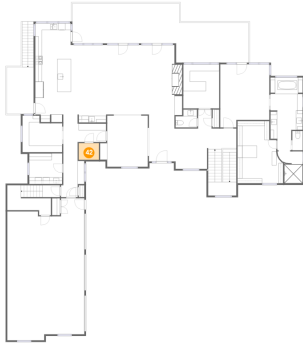


Dimensions: 10'6" x 29'5"
Area: 300 sq. ft
Counted as Living Area:
Yes

Heated: Yes
Finished: Yes
Enclosed: Yes
Contiguous:
Yes
Permitted: Yes
Wet Space: No
Addition: No
Conversion: No

405 Island View Drive, Penhook, Franklin County, Virginia, United States, 24137

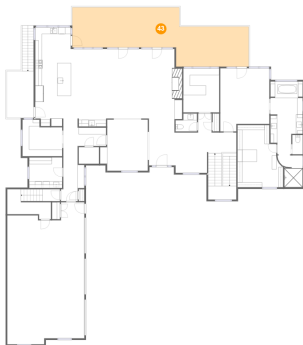
42 Floor 2 - Pantry



Dimensions: 6'0" x 4'11"
Area: 30 sq. ft
Counted as Living Area: Yes

Heated: Yes
Finished: Yes
Enclosed: Yes
Contiguous: Yes
Permitted: Yes
Wet Space: No
Addition: No
Conversion: No

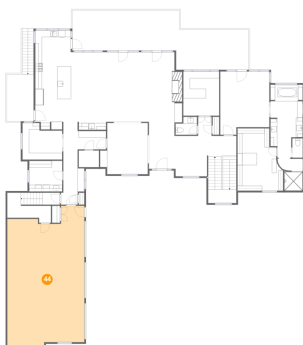
43 Floor 2 - Balcony



Dimensions: 52'5" x 17'8"
Area: 630 sq. ft
Counted as Living Area: No

Heated: No
Finished: Yes
Enclosed: No
Contiguous: Yes
Permitted: Yes
Wet Space: No
Addition: No
Conversion: No

44 Floor 2 - Garage



Dimensions: 22'11" x 40'5"
Area: 873 sq. ft
Counted as Living Area: No

Heated: No
Finished: No
Enclosed: Yes
Contiguous: Yes
Permitted: Yes
Wet Space: No
Addition: No
Conversion: No

405 Island View Drive, Penhook, Franklin County, Virginia, United States, 24137

45 Floor 3 - Bedroom



Dimensions: 18'4" x 40'5"
Area: 670 sq. ft
Counted as Living Area:
Yes

Heated: Yes
Finished: Yes
Enclosed: Yes
Contiguous:
Yes
Permitted: Yes
Wet Space: No
Addition: No
Conversion: No

46 Floor 3 - Bath



Dimensions: 7'6" x 8'1"
Area: 59 sq. ft
Counted as Living Area:
Yes

Heated: Yes
Finished: Yes
Enclosed: Yes
Contiguous:
Yes
Permitted: Yes
Wet Space: Yes
Addition: No
Conversion: No

47 Floor 3 - Attic

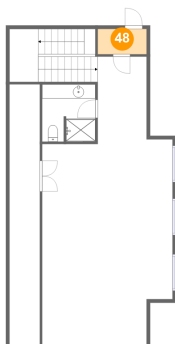


Dimensions: 4'3" x 36'6"
Area: 156 sq. ft
Counted as Living Area: No

Heated: No
Finished: No
Enclosed: Yes
Contiguous: Yes
Permitted: Yes
Wet Space: No
Addition: No
Conversion: No

405 Island View Drive, Penhook, Franklin County, Virginia, United States, 24137

48 Floor 3 - W.i.c.



Dimensions: 6'10" x 3'7"
Area: 24 sq. ft
Counted as Living Area:
Yes

Heated: Yes
Finished: Yes
Enclosed: Yes
Contiguous:
Yes
Permitted: Yes
Wet Space: No
Addition: No
Conversion: No