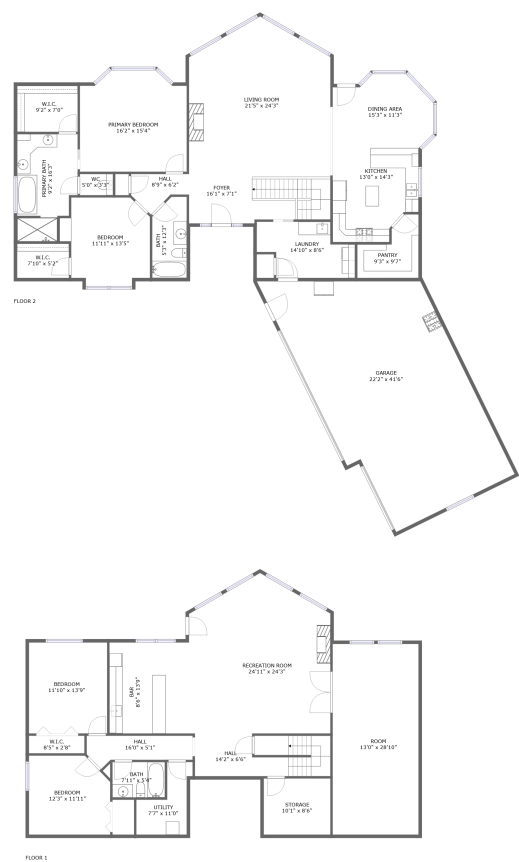




Home report


11841 Ridgefield Loop,Spearfish,SD,US




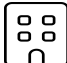
Property summary


 **1** Garages


 **4** Bedrooms

 **3** Bathrooms

 **0** Half baths

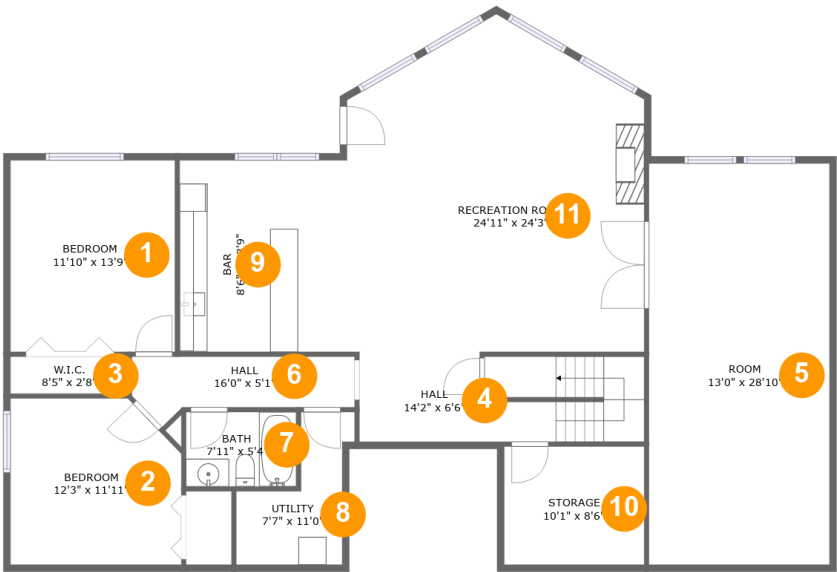
 **2** Floors

 **3,705** Gross living area sqft

 **4,730** Total sqft

Home report

11841 Ridgefield Loop,Spearfish,SD,US



Room dimensions

Floor 1 Total sqft: 1867    Living area: 1705

#		Dimensions	sqft	Counted as living area
1	Bedroom	11'10" x 13'9"	163 sq. ft	Yes
2	Bedroom	12'3" x 11'11"	139 sq. ft	Yes
3	W.I.C.	8'5" x 2'8"	22 sq. ft	Yes
4	Hall	14'2" x 6'6"	124 sq. ft	Yes
5	Room	13'0" x 28'10"	374 sq. ft	Yes
6	Hall	16'0" x 5'1"	60 sq. ft	Yes
7	Bath	7'11" x 5'4"	43 sq. ft	Yes
8	Utility	7'7" x 11'0"	59 sq. ft	No
9	Bar	8'6" x 13'9"	117 sq. ft	Yes
10	Storage	10'1" x 8'6"	86 sq. ft	No
11	Recreation Room	24'11" x 24'3"	501 sq. ft	Yes

Home report

11841 Ridgefield Loop,Spearfish,SD,US



Room dimensions

Floor 2 Total sqft: 2863    Living area: 2000

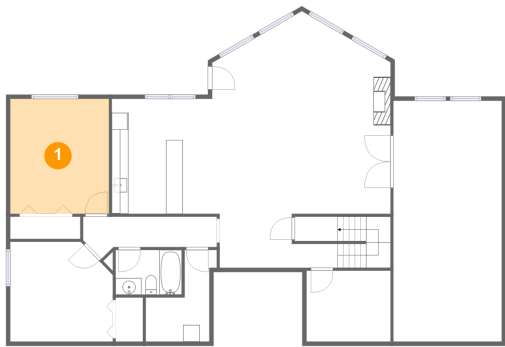
#		Dimensions	sqft	Counted as living area
12	W.I.C.	9'2" x 7'0"	64 sq. ft	Yes
13	Garage	22'2" x 41'6"	813 sq. ft	No
14	Bath	5'3" x 12'3"	60 sq. ft	Yes
15	Hall	8'9" x 6'2"	37 sq. ft	Yes
16	Kitchen	13'0" x 14'3"	167 sq. ft	Yes
17	Living Room	21'5" x 24'3"	453 sq. ft	Yes
18	Pantry	9'3" x 9'7"	63 sq. ft	Yes
19	Laundry	14'10" x 8'6"	102 sq. ft	Yes
20	W.I.C.	7'10" x 5'2"	41 sq. ft	Yes
21	Primary Bath	9'2" x 16'3"	131 sq. ft	Yes
22	Bedroom	11'11" x 13'5"	155 sq. ft	Yes

Home report

11841 Ridgefield Loop,Spearfish,SD,US

#		Dimensions	sqft	Counted as living area
23	WC	5'0" x 3'3"	16 sq. ft	Yes
24	Dining Area	15'3" x 11'3"	149 sq. ft	Yes
25	Foyer	16'1" x 7'1"	144 sq. ft	Yes
26	Primary Bedroom	16'2" x 15'4"	232 sq. ft	Yes

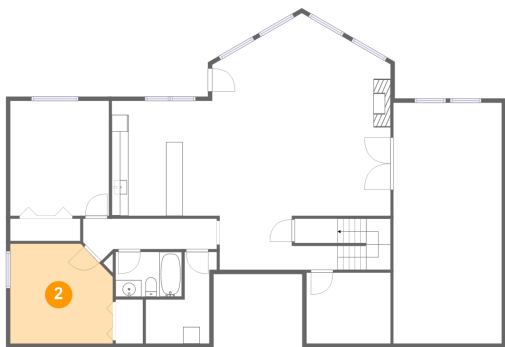
1 Floor 1 - Bedroom



Dimensions: 11'10" x 13'9"  
Area: 163 sq. ft  
Counted as living area: Yes

Heated: Yes  
Finished: Yes  
Enclosed: Yes  
Contiguous: Yes  
Permitted: Yes  
Wet space: No  
Addition: No  
Conversion: No

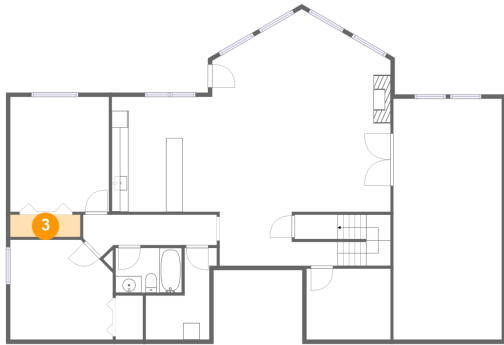
2 Floor 1 - Bedroom



Dimensions: 12'3" x 11'11"  
Area: 139 sq. ft  
Counted as living area: Yes

Heated: Yes  
Finished: Yes  
Enclosed: Yes  
Contiguous: Yes  
Permitted: Yes  
Wet space: No  
Addition: No  
Conversion: No

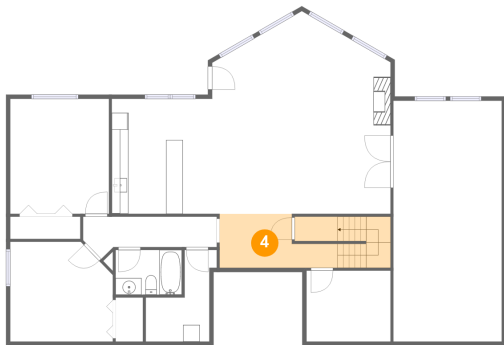
### 3 Floor 1 - W.I.C.



Dimensions: 8'5" x 2'8"  
Area: 22 sq. ft  
Counted as living area: Yes

Heated: Yes  
Finished: Yes  
Enclosed: Yes  
Contiguous: Yes  
Permitted: Yes  
Wet space: No  
Addition: No  
Conversion: No

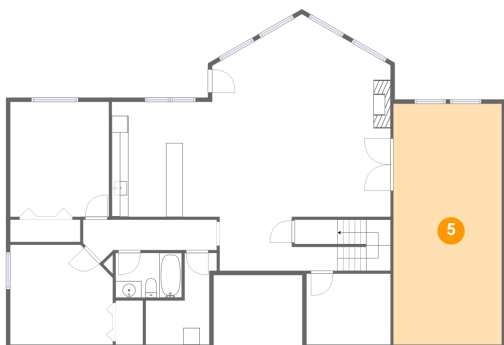
### 4 Floor 1 - Hall



Dimensions: 14'2" x 6'6"  
Area: 124 sq. ft  
Counted as living area: Yes

Heated: Yes  
Finished: Yes  
Enclosed: Yes  
Contiguous: Yes  
Permitted: Yes  
Wet space: No  
Addition: No  
Conversion: No

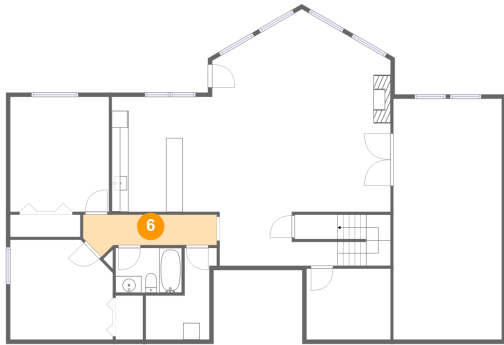
### 5 Floor 1 - Room



Dimensions: 13'0" x 28'10"  
Area: 374 sq. ft  
Counted as living area: Yes

Heated: Yes  
Finished: Yes  
Enclosed: Yes  
Contiguous: Yes  
Permitted: Yes  
Wet space: No  
Addition: No  
Conversion: No

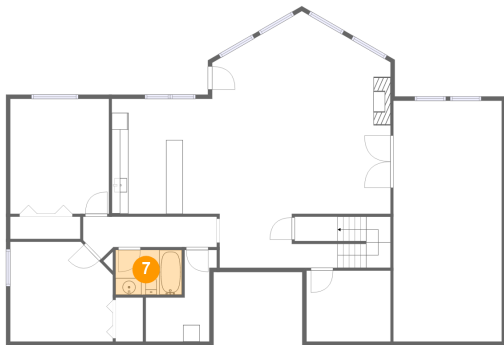
## 6 Floor 1 - Hall



Dimensions: 16'0" x 5'1"  
Area: 60 sq. ft  
Counted as living area: Yes

Heated: Yes  
Finished: Yes  
Enclosed: Yes  
Contiguous: Yes  
Permitted: Yes  
Wet space: No  
Addition: No  
Conversion: No

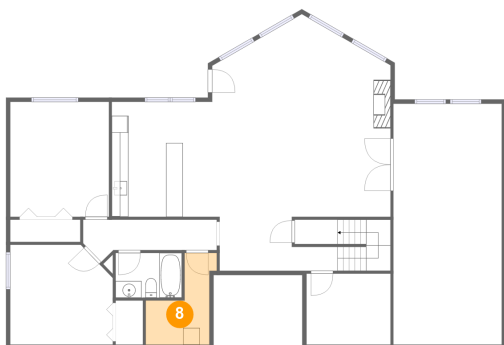
## 7 Floor 1 - Bath



Dimensions: 7'11" x 5'4"  
Area: 43 sq. ft  
Counted as living area: Yes

Heated: Yes  
Finished: Yes  
Enclosed: Yes  
Contiguous: Yes  
Permitted: Yes  
Wet space: Yes  
Addition: No  
Conversion: No

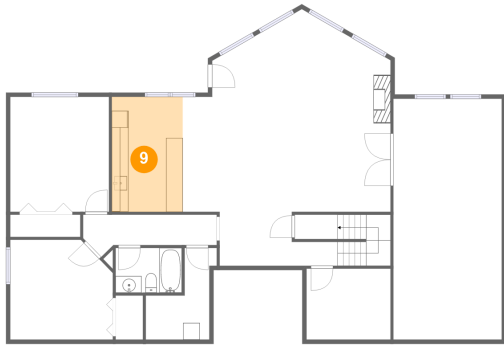
## 8 Floor 1 - Utility



Dimensions: 7'7" x 11'0"  
Area: 59 sq. ft  
Counted as living area: No

Heated: Yes  
Finished: No  
Enclosed: Yes  
Contiguous: Yes  
Permitted: Yes  
Wet space: No  
Addition: No  
Conversion: No

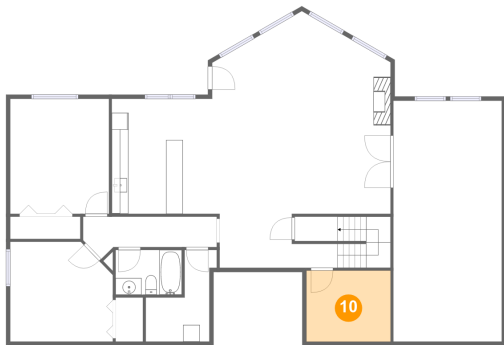
## 9 Floor 1 - Bar



Dimensions: 8'6" x 13'9"  
Area: 117 sq. ft  
Counted as living area: Yes

Heated: Yes  
Finished: Yes  
Enclosed: Yes  
Contiguous: Yes  
Permitted: Yes  
Wet space: No  
Addition: No  
Conversion: No

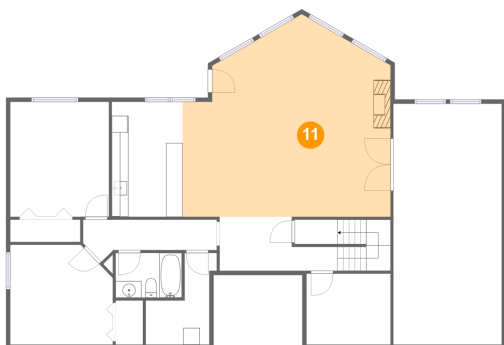
## 10 Floor 1 - Storage



Dimensions: 10'1" x 8'6"  
Area: 86 sq. ft  
Counted as living area: No

Heated: No  
Finished: No  
Enclosed: No  
Contiguous: Yes  
Permitted: Yes  
Wet space: No  
Addition: No  
Conversion: No

## 11 Floor 1 - Recreation Room

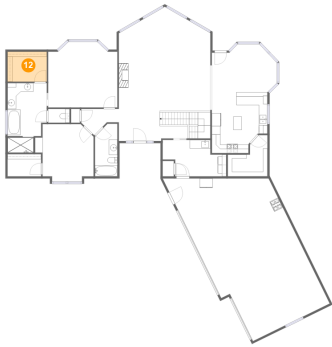


Dimensions: 24'11" x 24'3"  
Area: 501 sq. ft  
Counted as living area: Yes

Heated: Yes  
Finished: Yes  
Enclosed: Yes  
Contiguous: Yes  
Permitted: Yes  
Wet space: No  
Addition: No  
Conversion: No



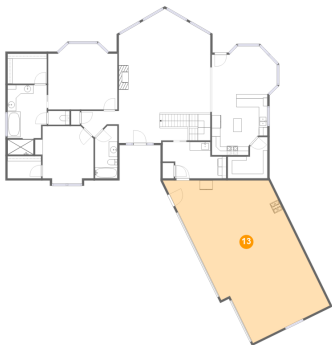
## 12 Floor 2 - W.I.C.



Dimensions: 9'2" x 7'0"  
Area: 64 sq. ft  
Counted as living area: Yes

Heated: Yes  
Finished: Yes  
Enclosed: Yes  
Contiguous: Yes  
Permitted: Yes  
Wet space: No  
Addition: No  
Conversion: No

## 13 Floor 2 - Garage



Dimensions: 22'2" x 41'6"  
Area: 813 sq. ft  
Counted as living area: No

Heated: No  
Finished: No  
Enclosed: Yes  
Contiguous: Yes  
Permitted: Yes  
Wet space: No  
Addition: No  
Conversion: No

## 14 Floor 2 - Bath



Dimensions: 5'3" x 12'3"  
Area: 60 sq. ft  
Counted as living area: Yes

Heated: Yes  
Finished: Yes  
Enclosed: Yes  
Contiguous: Yes  
Permitted: Yes  
Wet space: Yes  
Addition: No  
Conversion: No

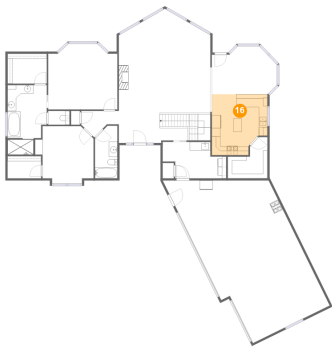
## 15 Floor 2 - Hall



Dimensions: 8'9" x 6'2"  
Area: 37 sq. ft  
Counted as living area: Yes

Heated: Yes  
Finished: Yes  
Enclosed: Yes  
Contiguous: Yes  
Permitted: Yes  
Wet space: No  
Addition: No  
Conversion: No

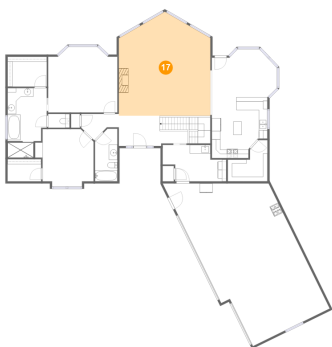
## 16 Floor 2 - Kitchen



Dimensions: 13'0" x 14'3"  
Area: 167 sq. ft  
Counted as living area: Yes

Heated: Yes  
Finished: Yes  
Enclosed: Yes  
Contiguous: Yes  
Permitted: Yes  
Wet space: No  
Addition: No  
Conversion: No

## 17 Floor 2 - Living Room



Dimensions: 21'5" x 24'3"  
Area: 453 sq. ft  
Counted as living area: Yes

Heated: Yes  
Finished: Yes  
Enclosed: Yes  
Contiguous: Yes  
Permitted: Yes  
Wet space: No  
Addition: No  
Conversion: No

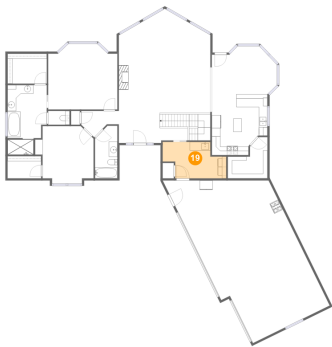
## 18 Floor 2 - Pantry



Dimensions: 9'3" x 9'7"  
Area: 63 sq. ft  
Counted as living area: Yes

Heated: Yes  
Finished: Yes  
Enclosed: Yes  
Contiguous: Yes  
Permitted: Yes  
Wet space: No  
Addition: No  
Conversion: No

## 19 Floor 2 - Laundry



Dimensions: 14'10" x 8'6"  
Area: 102 sq. ft  
Counted as living area: Yes

Heated: Yes  
Finished: Yes  
Enclosed: Yes  
Contiguous: Yes  
Permitted: Yes  
Wet space: No  
Addition: No  
Conversion: No

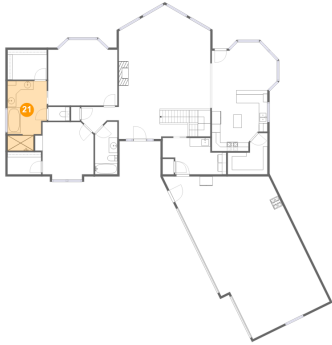
## 20 Floor 2 - W.I.C.



Dimensions: 7'10" x 5'2"  
Area: 41 sq. ft  
Counted as living area: Yes

Heated: Yes  
Finished: Yes  
Enclosed: Yes  
Contiguous: Yes  
Permitted: Yes  
Wet space: No  
Addition: No  
Conversion: No

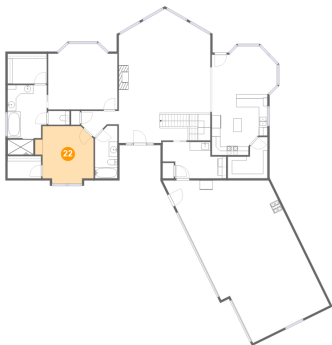
## 21 Floor 2 - Primary Bath



Dimensions: 9'2" x 16'3"  
Area: 131 sq. ft  
Counted as living area: Yes

Heated: Yes  
Finished: Yes  
Enclosed: Yes  
Contiguous: Yes  
Permitted: Yes  
Wet space: Yes  
Addition: No  
Conversion: No

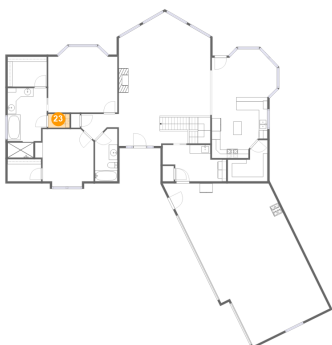
## 22 Floor 2 - Bedroom



Dimensions: 11'11" x 13'5"  
Area: 155 sq. ft  
Counted as living area: Yes

Heated: Yes  
Finished: Yes  
Enclosed: Yes  
Contiguous: Yes  
Permitted: Yes  
Wet space: No  
Addition: No  
Conversion: No

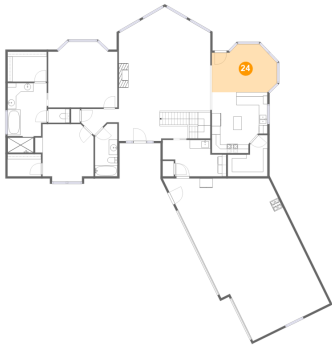
## 23 Floor 2 - WC



Dimensions: 5'0" x 3'3"  
Area: 16 sq. ft  
Counted as living area: Yes

Heated: Yes  
Finished: Yes  
Enclosed: Yes  
Contiguous: Yes  
Permitted: Yes  
Wet space: Yes  
Addition: No  
Conversion: No

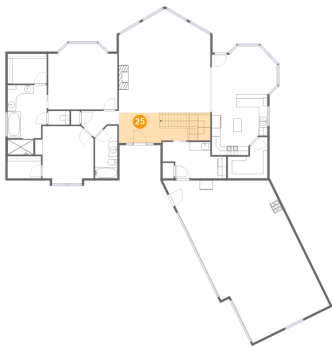
## 24 Floor 2 - Dining Area



Dimensions: 15'3" x 11'3"  
Area: 149 sq. ft  
Counted as living area: Yes

Heated: Yes  
Finished: Yes  
Enclosed: Yes  
Contiguous: Yes  
Permitted: Yes  
Wet space: No  
Addition: No  
Conversion: No

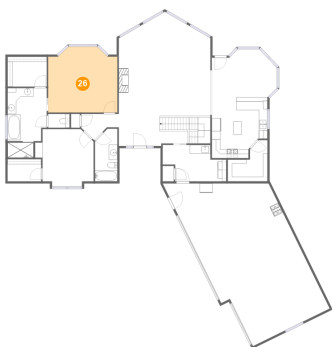
## 25 Floor 2 - Foyer



Dimensions: 16'1" x 7'1"  
Area: 144 sq. ft  
Counted as living area: Yes

Heated: Yes  
Finished: Yes  
Enclosed: Yes  
Contiguous: Yes  
Permitted: Yes  
Wet space: No  
Addition: No  
Conversion: No

## 26 Floor 2 - Primary Bedroom



Dimensions: 16'2" x 15'4"  
Area: 232 sq. ft  
Counted as living area: Yes

Heated: Yes  
Finished: Yes  
Enclosed: Yes  
Contiguous: Yes  
Permitted: Yes  
Wet space: No  
Addition: No  
Conversion: No