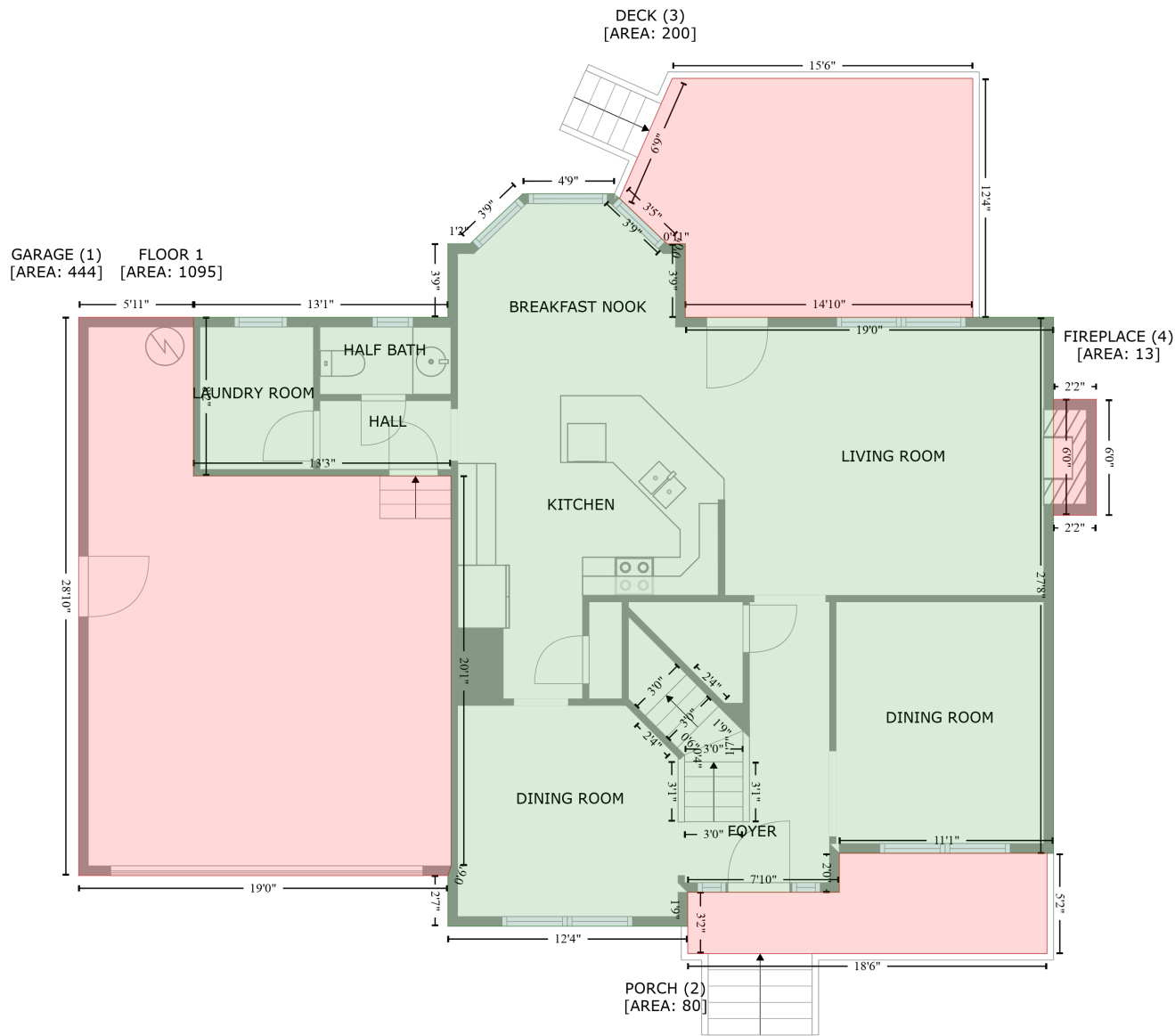


479 Seastone Street, Raleigh, Wake County, North Carolina, United States, 27603

Gross Living Area: 2360 sq. ft



Space	Area (sq. ft)	Calculation
FLOOR 1 (Living area)	1095	Coordinate Polygon Area Algorithm using inches $-\left((332 + 364.5) * (108.5 - 139.5) + (364.5 + 375.8) * (139.5 - 139.5) + (375.8 + 375.8) * (139.5 - 185) + (375.8 + 603.6) * (185 - 185) + (603.6 + 603.6) * (185 - 516.8) + (603.6 + 471) * (516.8 - 516.8) + (471 + 471) * (516.8 - 541) + (471 + 377.3) * (541 - 541) + (377.3 + 377.3) * (541 - 562) + (377.3 + 229) * (562 - 562) + (229 + 229) * (562 - 530.6) + (229 + 231) * (530.6 - 524.6) + (231 + 231) * (524.6 - 283.2) + (231 + 71.6) * (283.2 - 283.2) + (71.6 + 71.6) * (283.2 - 185) + (71.6 + 229) * (185 - 185) + (229 + 229) * (185 - 139.5) + (229 + 242.7) * (139.5 - 139.5) + (242.7 + 275.2) * (139.5 - 108.6) + (275.2 + 332) * (108.6 - 108.5)\right) * 0.5 * 0.00694$
GARAGE	444	$-\left((71.6 + 71.6) * (185 - 283.2) + (71.6 + 231) * (283.2 - 283.2) + (231 + 231) * (283.2 - 524.6) + \right.$

479 Seastone Street, Raleigh, Wake County, North Carolina, United States, 27603

Gross Living Area: 2360 sq. ft

Space	Area (sq. ft)	Calculation <small>Coordinate Polygon Area Algorithm using inches</small>
(Non-living area)		$(231 + 229) * (524.6 - 530.6) + (229 + 0.6) * (530.6 - 530.6) + (0.6 + 0.6) * (530.6 - 185) + (0.6 + 71.6) * (185 - 185) * 0.5 * 0.00694$
PORCH (Non-living area)	80	$-((599.6 + 599.6) * (516.8 - 578.8) + (599.6 + 377.3) * (578.8 - 578.8) + (377.3 + 377.3) * (578.8 - 541) + (377.3 + 471) * (541 - 541) + (471 + 471) * (541 - 516.8) + (471 + 599.6) * (516.8 - 516.8)) * 0.5 * 0.00694$
DECK (Non-living area)	200	$-((553.6 + 553.6) * (37.1 - 185) + (553.6 + 375.8) * (185 - 185) + (375.8 + 375.8) * (185 - 139.5) + (375.8 + 364.5) * (139.5 - 139.5) + (364.5 + 364.6) * (139.5 - 139.4) + (364.6 + 335.2) * (139.4 - 111.3) + (335.2 + 367.8) * (111.3 - 37.1) + (367.8 + 553.6) * (37.1 - 37.1)) * 0.5 * 0.00694$
FIREPLACE (Non-living area)	13	$-((630 + 630) * (235.7 - 307.5) + (630 + 603.6) * (307.5 - 307.5) + (603.6 + 603.6) * (307.5 - 235.7) + (603.6 + 630) * (235.7 - 235.7)) * 0.5 * 0.00694$

