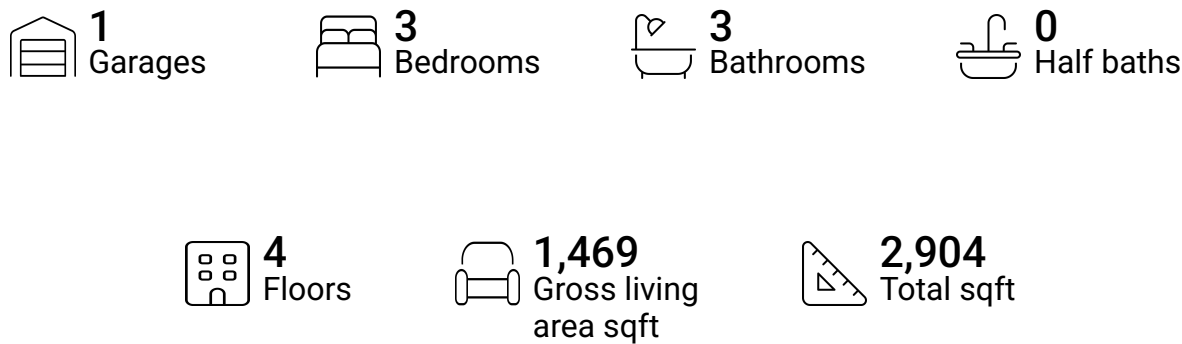


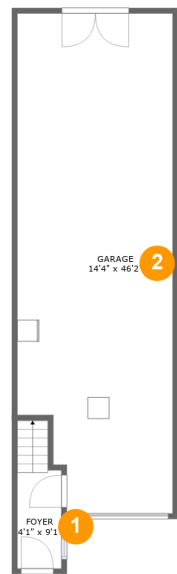
320 Island Way, Clearwater Beach, Pinellas County,
Florida, United States, 33767, 102



Property summary



320 Island Way, Clearwater Beach, Pinellas County,
Florida, United States, 33767, 102



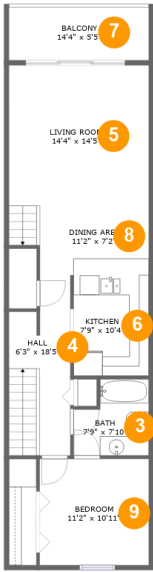
Room dimensions

Floor 1

Total sqft: 724 Living area: 0

#		Dimensions	sqft	Counted as living area
1	Foyer	4'1" x 9'1"	50 sq. ft	No
2	Garage	14'4" x 46'2"	626 sq. ft	No

320 Island Way, Clearwater Beach, Pinellas County,
Florida, United States, 33767, 102



Room dimensions

Floor 2 Total sqft: 856 Living area: 778

#		Dimensions	sqft	Counted as living area
3	Bath	7'9" x 7'10"	52 sq. ft	Yes
4	Hall	6'3" x 18'5"	103 sq. ft	Yes
5	Living Room	14'4" x 14'5"	206 sq. ft	Yes
6	Kitchen	7'9" x 10'4"	79 sq. ft	Yes
7	Balcony	14'4" x 5'5"	78 sq. ft	No
8	Dining Area	11'2" x 7'2"	93 sq. ft	Yes
9	Bedroom	11'2" x 10'11"	122 sq. ft	Yes

**320 Island Way, Clearwater Beach, Pinellas County,
Florida, United States, 33767, 102**



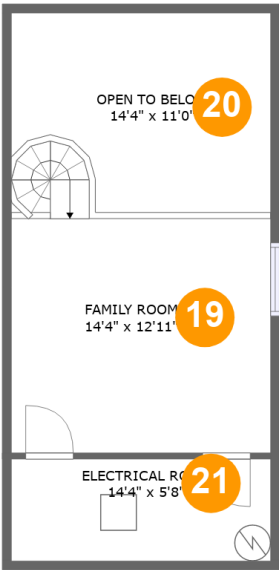
Room dimensions

Floor 3

Total sqft: 852 Living area: 691

#		Dimensions	sqft	Counted as living area
10	W.I.C.	7'0" x 4'0"	28 sq. ft	Yes
11	Laundry	7'0" x 5'6"	37 sq. ft	Yes
12	Hall	4'2" x 7'5"	61 sq. ft	Yes
13	Bath	4'9" x 8'11"	42 sq. ft	Yes
14	Balcony	14'4" x 5'5"	78 sq. ft	No
15	Balcony	9'3" x 8'11"	83 sq. ft	No
16	Primary Bedroom	14'4" x 22'8"	206 sq. ft	Yes
17	Bath	6'4" x 8'6"	50 sq. ft	Yes
18	Bedroom	14'4" x 11'3"	161 sq. ft	Yes

320 Island Way, Clearwater Beach, Pinellas County,
Florida, United States, 33767, 102



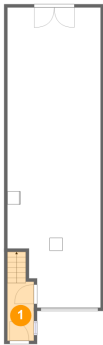
Room dimensions

Floor 4 Total sqft: 472 Living area: 0

#		Dimensions	sqft	Counted as living area
19	Family Room	14'4" x 12'11"	208 sq. ft	No
20	Open To Below	14'4" x 11'0"	140 sq. ft	No
21	Electrical Room	14'4" x 5'8"	81 sq. ft	No

320 Island Way, Clearwater Beach, Pinellas County,
Florida, United States, 33767, 102

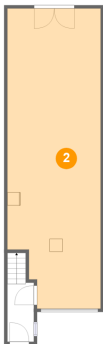
1 Floor 1 - Foyer



Dimensions: 4'1" x 9'1"
Area: 50 sq. ft
Counted as living area: No

Heated: Yes
Finished: Yes
Enclosed: Yes
Contiguous: No
Permitted: Yes
Wet space: No
Addition: No
Conversion: No

2 Floor 1 - Garage



Dimensions: 14'4" x 46'2"
Area: 626 sq. ft
Counted as living area: No

Heated: No
Finished: No
Enclosed: Yes
Contiguous: Yes
Permitted: Yes
Wet space: No
Addition: No
Conversion: No

320 Island Way, Clearwater Beach, Pinellas County,
Florida, United States, 33767, 102

3 Floor 2 - Bath



Dimensions: 7'9" x 7'10"
Area: 52 sq. ft
Counted as living area: Yes

Heated: Yes
Finished: Yes
Enclosed: Yes
Contiguous: Yes
Permitted: Yes
Wet space: Yes
Addition: No
Conversion: No

4 Floor 2 - Hall



Dimensions: 6'3" x 18'5"
Area: 103 sq. ft
Counted as living area: Yes

Heated: Yes
Finished: Yes
Enclosed: Yes
Contiguous: Yes
Permitted: Yes
Wet space: No
Addition: No
Conversion: No

5 Floor 2 - Living Room



Dimensions: 14'4" x 14'5"
Area: 206 sq. ft
Counted as living area: Yes

Heated: Yes
Finished: Yes
Enclosed: Yes
Contiguous: Yes
Permitted: Yes
Wet space: No
Addition: No
Conversion: No

320 Island Way, Clearwater Beach, Pinellas County,
Florida, United States, 33767, 102

6 Floor 2 - Kitchen



Dimensions: 7'9" x 10'4"
Area: 79 sq. ft
Counted as living area: Yes

Heated: Yes
Finished: Yes
Enclosed: Yes
Contiguous: Yes
Permitted: Yes
Wet space: No
Addition: No
Conversion: No

7 Floor 2 - Balcony



Dimensions: 14'4" x 5'5"
Area: 78 sq. ft
Counted as living area: No

Heated: No
Finished: Yes
Enclosed: No
Contiguous: Yes
Permitted: Yes
Wet space: No
Addition: No
Conversion: No

8 Floor 2 - Dining Area



Dimensions: 11'2" x 7'2"
Area: 93 sq. ft
Counted as living area: Yes

Heated: Yes
Finished: Yes
Enclosed: Yes
Contiguous: Yes
Permitted: Yes
Wet space: No
Addition: No
Conversion: No

320 Island Way, Clearwater Beach, Pinellas County,
Florida, United States, 33767, 102

9 Floor 2 - Bedroom



Dimensions: 11'2" x 10'11"
Area: 122 sq. ft
Counted as living area: Yes

Heated: Yes
Finished: Yes
Enclosed: Yes
Contiguous: Yes
Permitted: Yes
Wet space: No
Addition: No
Conversion: No

10 Floor 3 - W.I.C.



Dimensions: 7'0" x 4'0"
Area: 28 sq. ft
Counted as living area: Yes

Heated: Yes
Finished: Yes
Enclosed: Yes
Contiguous: Yes
Permitted: Yes
Wet space: No
Addition: No
Conversion: No

11 Floor 3 - Laundry



Dimensions: 7'0" x 5'6"
Area: 37 sq. ft
Counted as living area: Yes

Heated: Yes
Finished: Yes
Enclosed: Yes
Contiguous: Yes
Permitted: Yes
Wet space: No
Addition: No
Conversion: No

320 Island Way, Clearwater Beach, Pinellas County,
Florida, United States, 33767, 102

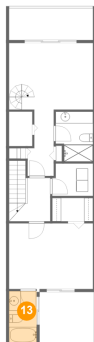
12 Floor 3 - Hall



Dimensions: 4'2" x 7'5"
Area: 61 sq. ft
Counted as living area: Yes

Heated: Yes
Finished: Yes
Enclosed: Yes
Contiguous: Yes
Permitted: Yes
Wet space: No
Addition: No
Conversion: No

13 Floor 3 - Bath



Dimensions: 4'9" x 8'11"
Area: 42 sq. ft
Counted as living area: Yes

Heated: Yes
Finished: Yes
Enclosed: Yes
Contiguous: Yes
Permitted: Yes
Wet space: Yes
Addition: No
Conversion: No

14 Floor 3 - Balcony



Dimensions: 14'4" x 5'5"
Area: 78 sq. ft
Counted as living area: No

Heated: No
Finished: Yes
Enclosed: No
Contiguous: Yes
Permitted: Yes
Wet space: No
Addition: No
Conversion: No

320 Island Way, Clearwater Beach, Pinellas County,
Florida, United States, 33767, 102

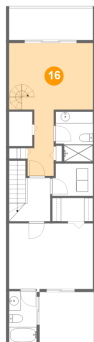
15 Floor 3 - Balcony



Dimensions: 9'3" x 8'11"
Area: 83 sq. ft
Counted as living area: No

Heated: No
Finished: Yes
Enclosed: No
Contiguous: Yes
Permitted: Yes
Wet space: No
Addition: No
Conversion: No

16 Floor 3 - Primary Bedroom



Dimensions: 14'4" x 22'8"
Area: 206 sq. ft
Counted as living area: Yes

Heated: Yes
Finished: Yes
Enclosed: Yes
Contiguous: Yes
Permitted: Yes
Wet space: No
Addition: No
Conversion: No

17 Floor 3 - Bath



Dimensions: 6'4" x 8'6"
Area: 50 sq. ft
Counted as living area: Yes

Heated: Yes
Finished: Yes
Enclosed: Yes
Contiguous: Yes
Permitted: Yes
Wet space: Yes
Addition: No
Conversion: No

320 Island Way, Clearwater Beach, Pinellas County,
Florida, United States, 33767, 102

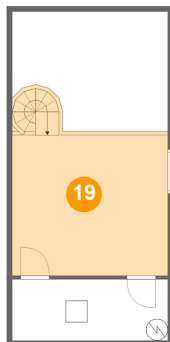
18 Floor 3 - Bedroom



Dimensions: 14'4" x 11'3"
Area: 161 sq. ft
Counted as living area: Yes

Heated: Yes
Finished: Yes
Enclosed: Yes
Contiguous: Yes
Permitted: Yes
Wet space: No
Addition: No
Conversion: No

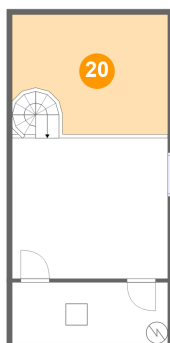
19 Floor 4 - Family Room



Dimensions: 14'4" x 12'11"
Area: 208 sq. ft
Counted as living area: No

Heated: Yes
Finished: Yes
Enclosed: Yes
Contiguous: No
Permitted: Yes
Wet space: No
Addition: No
Conversion: No

20 Floor 4 - Open To Below

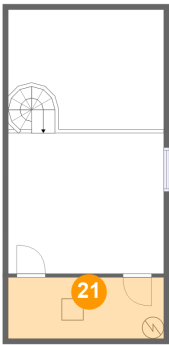


Dimensions: 14'4" x 11'0"
Area: 140 sq. ft
Counted as living area: No

Heated: No
Finished: No
Enclosed: No
Contiguous: Yes
Permitted: No
Wet space: No
Addition: No
Conversion: No

320 Island Way, Clearwater Beach, Pinellas County,
Florida, United States, 33767, 102

21 Floor 4 - Electrical Room



Dimensions: 14'4" x 5'8"
Area: 81 sq. ft
Counted as living area: No

Heated: No
Finished: No
Enclosed: Yes
Contiguous: Yes
Permitted: Yes
Wet space: No
Addition: No
Conversion: No