


# 1420 Shoshone Dr, Spearfish, SD, US



## Property summary


 **1** Garages

 **5** Bedrooms

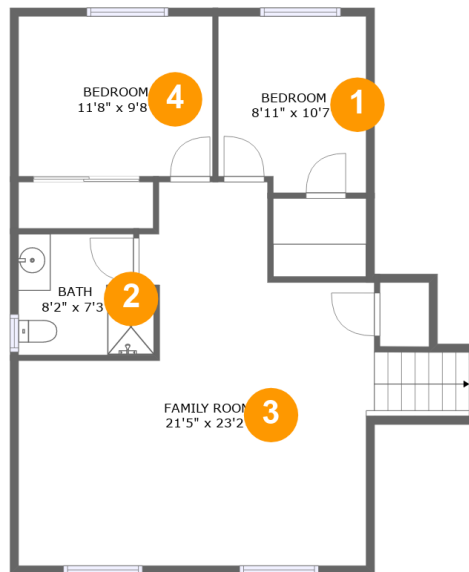
 **3** Bathrooms

 **0** Half baths

 **3** Floors

 **2,333** Gross living area sqft

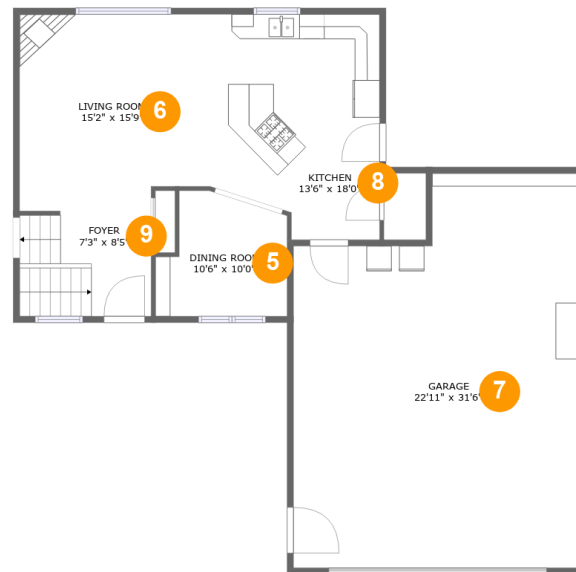
 **3,035** Total sqft

**1420 Shoshone Dr, Spearfish, SD, US****Room dimensions**

Floor 1

Total sqft: 797 Living area: 797

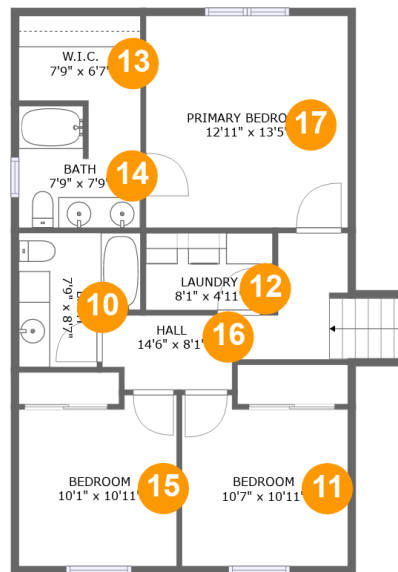
#		Dimensions	sqft	Counted as living area
1	Bedroom	8'11" x 10'7"	92 sq. ft	Yes
2	Bath	8'2" x 7'3"	55 sq. ft	Yes
3	Family Room	21'5" x 23'2"	388 sq. ft	Yes
4	Bedroom	11'8" x 9'8"	113 sq. ft	Yes

**1420 Shoshone Dr, Spearfish, SD, US****Room dimensions**

Floor 2

Total sqft: 1428 Living area: 726

#		Dimensions	sqft	Counted as living area
5	Dining Room	10'6" x 10'0"	89 sq. ft	Yes
6	Living Room	15'2" x 15'9"	230 sq. ft	Yes
7	Garage	22'11" x 31'6"	658 sq. ft	No
8	Kitchen	13'6" x 18'0"	223 sq. ft	Yes
9	Foyer	7'3" x 8'5"	87 sq. ft	Yes

**1420 Shoshone Dr, Spearfish, SD, US****Room dimensions**

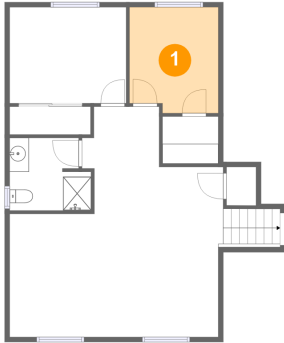
Floor 3

Total sqft: 810 Living area: 810

#		Dimensions	sqft	Counted as living area
10	Bath	7'9" x 8'7"	56 sq. ft	Yes
11	Bedroom	10'7" x 10'11"	109 sq. ft	Yes
12	Laundry	8'1" x 4'11"	40 sq. ft	Yes
13	W.I.C.	7'9" x 6'7"	46 sq. ft	Yes
14	Bath	7'9" x 7'9"	56 sq. ft	Yes
15	Bedroom	10'1" x 10'11"	104 sq. ft	Yes
16	Hall	14'6" x 8'1"	96 sq. ft	Yes
17	Primary Bedroom	12'11" x 13'5"	174 sq. ft	Yes

# 1420 Shoshone Dr, Spearfish, SD, US

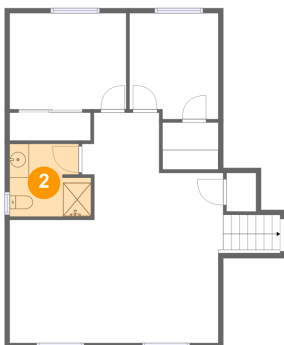
## 1 Floor 1 - Bedroom



Dimensions: 8'11" x 10'7"  
Area: 92 sq. ft  
Counted as living area: Yes

Heated: Yes  
Finished: Yes  
Enclosed: Yes  
Contiguous: Yes  
Permitted: Yes  
Wet space: No  
Addition: No  
Conversion: No

## 2 Floor 1 - Bath

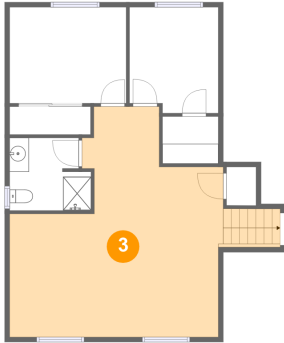


Dimensions: 8'2" x 7'3"  
Area: 55 sq. ft  
Counted as living area: Yes

Heated: Yes  
Finished: Yes  
Enclosed: Yes  
Contiguous: Yes  
Permitted: Yes  
Wet space: Yes  
Addition: No  
Conversion: No

# 1420 Shoshone Dr, Spearfish, SD, US

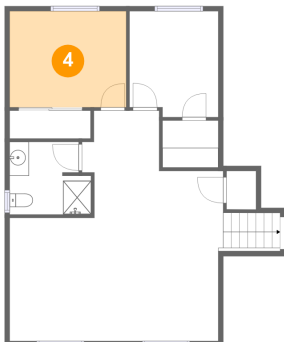
## 3 Floor 1 - Family Room



Dimensions: 21'5" x 23'2"  
Area: 388 sq. ft  
Counted as living area: Yes

Heated: Yes  
Finished: Yes  
Enclosed: Yes  
Contiguous: Yes  
Permitted: Yes  
Wet space: No  
Addition: No  
Conversion: No

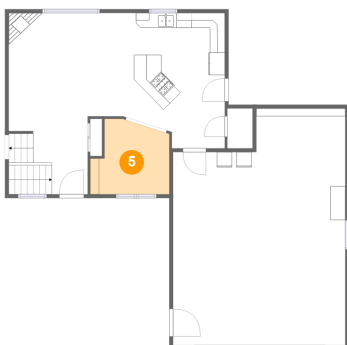
## 4 Floor 1 - Bedroom



Dimensions: 11'8" x 9'8"  
Area: 113 sq. ft  
Counted as living area: Yes

Heated: Yes  
Finished: Yes  
Enclosed: Yes  
Contiguous: Yes  
Permitted: Yes  
Wet space: No  
Addition: No  
Conversion: No

## 5 Floor 2 - Dining Room



Dimensions: 10'6" x 10'0"  
Area: 89 sq. ft  
Counted as living area: Yes

Heated: Yes  
Finished: Yes  
Enclosed: Yes  
Contiguous: Yes  
Permitted: Yes  
Wet space: No  
Addition: No  
Conversion: No

# 1420 Shoshone Dr, Spearfish, SD, US

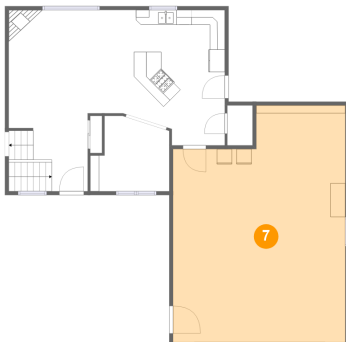
## 6 Floor 2 - Living Room



Dimensions: 15'2" x 15'9"  
Area: 230 sq. ft  
Counted as living area: Yes

Heated: Yes  
Finished: Yes  
Enclosed: Yes  
Contiguous: Yes  
Permitted: Yes  
Wet space: No  
Addition: No  
Conversion: No

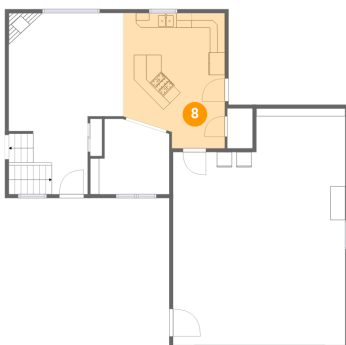
## 7 Floor 2 - Garage



Dimensions: 22'11" x 31'6"  
Area: 658 sq. ft  
Counted as living area: No

Heated: No  
Finished: No  
Enclosed: Yes  
Contiguous: Yes  
Permitted: Yes  
Wet space: No  
Addition: No  
Conversion: No

## 8 Floor 2 - Kitchen



Dimensions: 13'6" x 18'0"  
Area: 223 sq. ft  
Counted as living area: Yes

Heated: Yes  
Finished: Yes  
Enclosed: Yes  
Contiguous: Yes  
Permitted: Yes  
Wet space: No  
Addition: No  
Conversion: No

# 1420 Shoshone Dr, Spearfish, SD, US

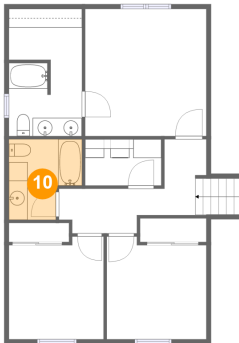
## 9 Floor 2 - Foyer



Dimensions: 7'3" x 8'5"  
Area: 87 sq. ft  
Counted as living area: Yes

Heated: Yes  
Finished: Yes  
Enclosed: Yes  
Contiguous: Yes  
Permitted: Yes  
Wet space: No  
Addition: No  
Conversion: No

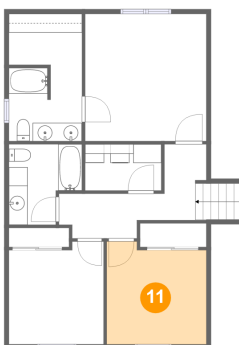
## 10 Floor 3 - Bath



Dimensions: 7'9" x 8'7"  
Area: 56 sq. ft  
Counted as living area: Yes

Heated: Yes  
Finished: Yes  
Enclosed: Yes  
Contiguous: Yes  
Permitted: Yes  
Wet space: Yes  
Addition: No  
Conversion: No

## 11 Floor 3 - Bedroom

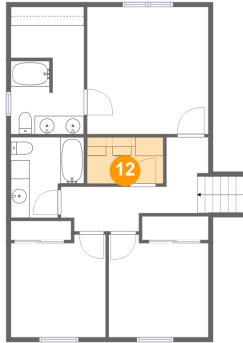


Dimensions: 10'7" x 10'11"  
Area: 109 sq. ft  
Counted as living area: Yes

Heated: Yes  
Finished: Yes  
Enclosed: Yes  
Contiguous: Yes  
Permitted: Yes  
Wet space: No  
Addition: No  
Conversion: No



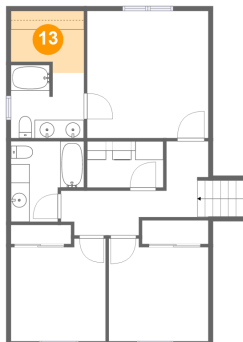
**12** Floor 3 - Laundry



Dimensions: 8'1" x 4'11"  
Area: 40 sq. ft  
Counted as living area: Yes

Heated: Yes  
Finished: Yes  
Enclosed: Yes  
Contiguous: Yes  
Permitted: Yes  
Wet space: No  
Addition: No  
Conversion: No

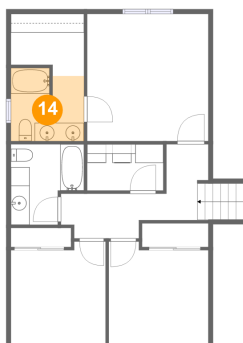
**13** Floor 3 - W.I.C.



Dimensions: 7'9" x 6'7"  
Area: 46 sq. ft  
Counted as living area: Yes

Heated: Yes  
Finished: Yes  
Enclosed: Yes  
Contiguous: Yes  
Permitted: Yes  
Wet space: No  
Addition: No  
Conversion: No

**14** Floor 3 - Bath

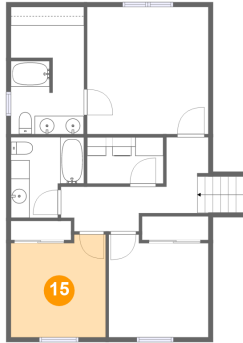


Dimensions: 7'9" x 7'9"  
Area: 56 sq. ft  
Counted as living area: Yes

Heated: Yes  
Finished: Yes  
Enclosed: Yes  
Contiguous: Yes  
Permitted: Yes  
Wet space: Yes  
Addition: No  
Conversion: No

# 1420 Shoshone Dr, Spearfish, SD, US

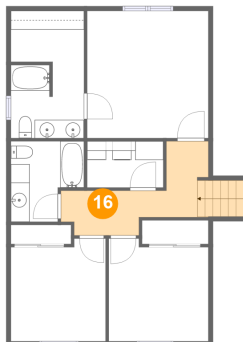
## 15 Floor 3 - Bedroom



Dimensions: 10'1" x 10'11"  
Area: 104 sq. ft  
Counted as living area: Yes

Heated: Yes  
Finished: Yes  
Enclosed: Yes  
Contiguous: Yes  
Permitted: Yes  
Wet space: No  
Addition: No  
Conversion: No

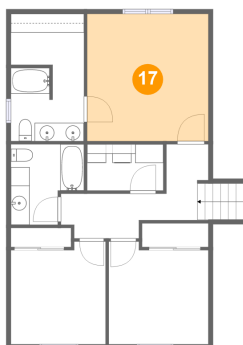
## 16 Floor 3 - Hall



Dimensions: 14'6" x 8'1"  
Area: 96 sq. ft  
Counted as living area: Yes

Heated: Yes  
Finished: Yes  
Enclosed: Yes  
Contiguous: Yes  
Permitted: Yes  
Wet space: No  
Addition: No  
Conversion: No

## 17 Floor 3 - Primary Bedroom



Dimensions: 12'11" x 13'5"  
Area: 174 sq. ft  
Counted as living area: Yes

Heated: Yes  
Finished: Yes  
Enclosed: Yes  
Contiguous: Yes  
Permitted: Yes  
Wet space: No  
Addition: No  
Conversion: No