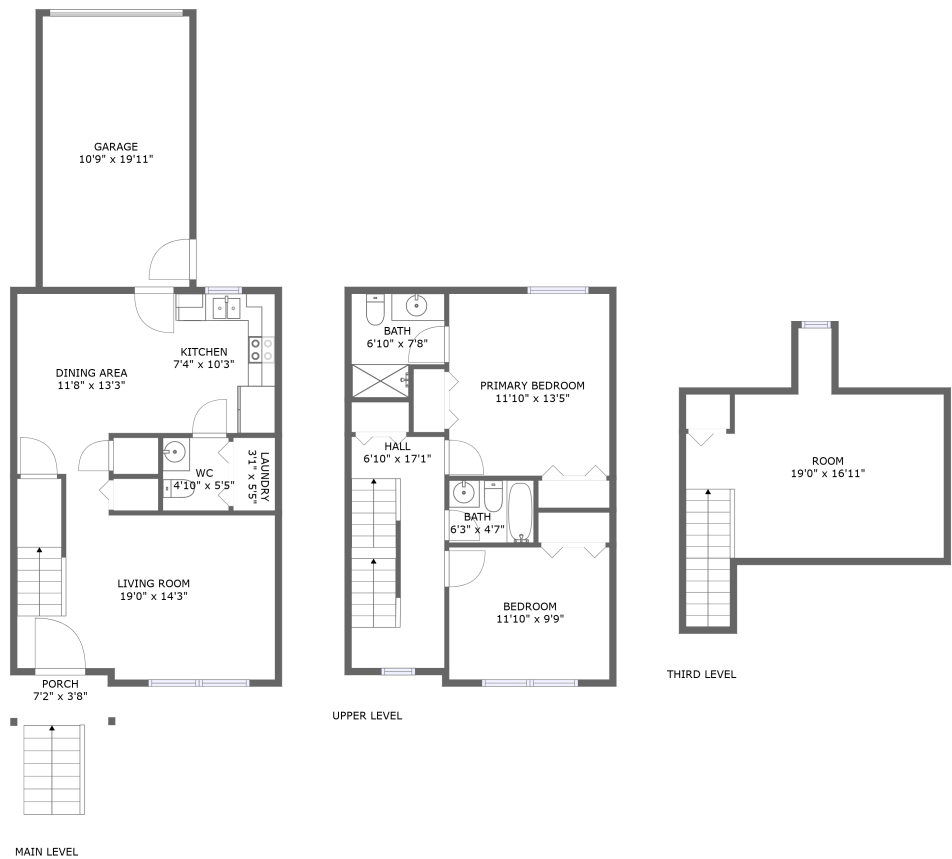


Home report

509 Byler Cir, Midway, North Cornwall Township, Lebanon,
Lebanon County, Pennsylvania, United States, 17042



Total Area: 1301 sq. ft
Floor 1: 534 sq. ft, Floor 2: 535 sq. ft, Floor 3: 232 sq. ft
Excluded: Garage 216 sq. ft, Porch 27 sq. ft, Low ceiling 26 sq. ft, Walls: 127 sq. ft

Property summary

 **3** Floors

 **2** Bedrooms

 **2** Bathrooms

Home report

**509 Byler Cir, Midway, North Cornwall Township, Lebanon,
Lebanon County, Pennsylvania, United States, 17042**



1
Half baths



1
Garages

Home report

509 Byler Cir, Midway, North Cornwall Township, Lebanon,
Lebanon County, Pennsylvania, United States, 17042



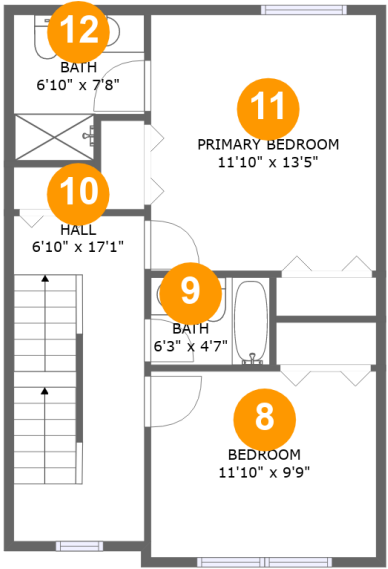
Room dimensions

Floor 1 Total:534sqft Excluded: 243sqft

#		Max Dimensions	sqft	Included
1	Dining Area	11'8" x 13'3"	140 sq. ft	Yes
2	Kitchen	7'4" x 10'3"	75 sq. ft	Yes
3	Garage	10'9" x 19'11"	216 sq. ft	No
4	Living Room	19'0" x 14'3"	241 sq. ft	Yes
5	WC	4'10" x 5'5"	26 sq. ft	Yes
6	Laundry	3'1" x 5'5"	17 sq. ft	Yes
7	Porch	7'2" x 3'8"	27 sq. ft	No

Home report

509 Byler Cir, Midway, North Cornwall Township, Lebanon,
Lebanon County, Pennsylvania, United States, 17042

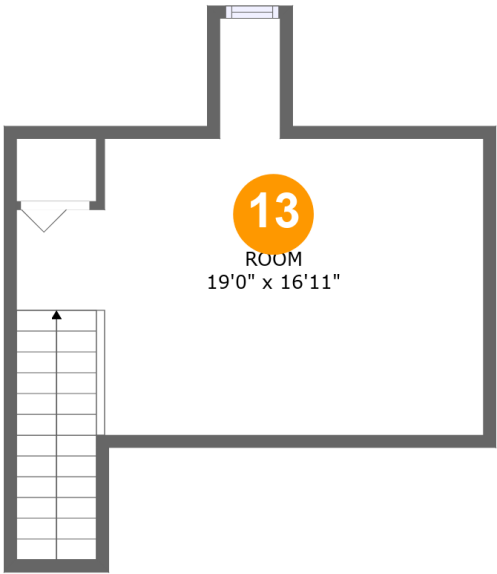


Room dimensions

Floor 2 Total:535sqft Excluded: 0sqft

#		Max Dimensions	sqft	Included
8	Bedroom	11'10" x 9'9"	115 sq. ft	Yes
9	Bath	6'3" x 4'7"	29 sq. ft	Yes
10	Hall	6'10" x 17'1"	117 sq. ft	Yes
11	Primary Bedroom	11'10" x 13'5"	158 sq. ft	Yes
12	Bath	6'10" x 7'8"	46 sq. ft	Yes

509 Byler Cir, Midway, North Cornwall Township, Lebanon,
Lebanon County, Pennsylvania, United States, 17042



Room dimensions

Floor 3 Total:232sqft Excluded: 26sqft

#		Max Dimensions	sqft	Included
13	Room	19'0" x 16'11"	221 sq. ft	Yes

509 Byler Cir, Midway, North Cornwall Township, Lebanon,
Lebanon County, Pennsylvania, United States, 17042

1 Floor 1 - Dining Area



Max Dimensions: 11'8" x 13'3"
Calculated Area: 140 sq. ft
Included: Yes

Heated: Yes
Finished: Yes
Enclosed: Yes
Contiguous: Yes
Permitted: Yes
Wet space: No
Addition: No
Conversion: No

2 Floor 1 - Kitchen



Max Dimensions: 7'4" x 10'3"
Calculated Area: 75 sq. ft
Included: Yes

Heated: Yes
Finished: Yes
Enclosed: Yes
Contiguous: Yes
Permitted: Yes
Wet space: No
Addition: No
Conversion: No

3 Floor 1 - Garage



Max Dimensions: 10'9" x 19'11"
Calculated Area: 216 sq. ft
Included: No

Heated: No
Finished: No
Enclosed: Yes
Contiguous: Yes
Permitted: Yes
Wet space: No
Addition: No
Conversion: No

4 Floor 1 - Living Room



Max Dimensions: 19'0" x 14'3"
Calculated Area: 241 sq. ft
Included: Yes

Heated: Yes
Finished: Yes
Enclosed: Yes
Contiguous: Yes
Permitted: Yes
Wet space: No
Addition: No
Conversion: No

5 Floor 1 - WC



Max Dimensions: 4'10" x 5'5"
Calculated Area: 26 sq. ft
Included: Yes

Heated: Yes
Finished: Yes
Enclosed: Yes
Contiguous: Yes
Permitted: Yes
Wet space: Yes
Addition: No
Conversion: No

6 Floor 1 - Laundry



Max Dimensions: 3'1" x 5'5"
Calculated Area: 17 sq. ft
Included: Yes

Heated: Yes
Finished: Yes
Enclosed: Yes
Contiguous: Yes
Permitted: Yes
Wet space: No
Addition: No
Conversion: No

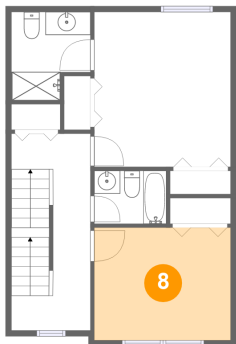
7 Floor 1 - Porch



Max Dimensions: 7'2" x 3'8"
Calculated Area: 27 sq. ft
Included: No

Heated: No
Finished: Yes
Enclosed: No
Contiguous: Yes
Permitted: Yes
Wet space: No
Addition: No
Conversion: No

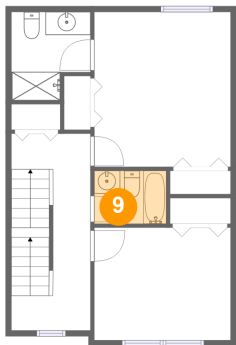
8 Floor 2 - Bedroom



Max Dimensions: 11'10" x 9'9"
Calculated Area: 115 sq. ft
Included: Yes

Heated: Yes
Finished: Yes
Enclosed: Yes
Contiguous: Yes
Permitted: Yes
Wet space: No
Addition: No
Conversion: No

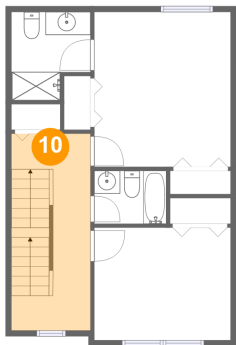
9 Floor 2 - Bath



Max Dimensions: 6'3" x 4'7"
Calculated Area: 29 sq. ft
Included: Yes

Heated: Yes
Finished: Yes
Enclosed: Yes
Contiguous: Yes
Permitted: Yes
Wet space: Yes
Addition: No
Conversion: No

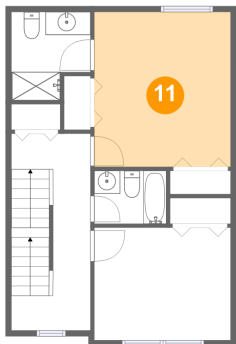
10 Floor 2 - Hall



Max Dimensions: 6'10" x 17'1"
Calculated Area: 117 sq. ft
Included: Yes

Heated: Yes
Finished: Yes
Enclosed: Yes
Contiguous: Yes
Permitted: Yes
Wet space: No
Addition: No
Conversion: No

11 Floor 2 - Primary Bedroom

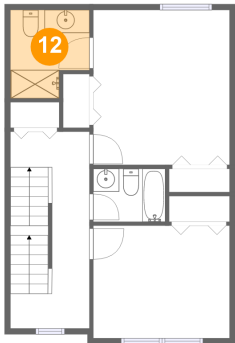


Max Dimensions: 11'10" x 13'5"
Calculated Area: 158 sq. ft
Included: Yes

Heated: Yes
Finished: Yes
Enclosed: Yes
Contiguous: Yes
Permitted: Yes
Wet space: No
Addition: No
Conversion: No

509 Byler Cir, Midway, North Cornwall Township, Lebanon,
Lebanon County, Pennsylvania, United States, 17042

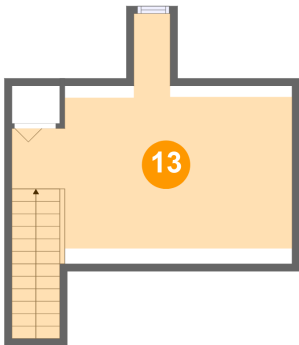
12 Floor 2 - Bath



Max Dimensions: 6'10" x 7'8"
Calculated Area: 46 sq. ft
Included: Yes

Heated: Yes
Finished: Yes
Enclosed: Yes
Contiguous: Yes
Permitted: Yes
Wet space: Yes
Addition: No
Conversion: No

13 Floor 3 - Room



Max Dimensions: 19'0" x 16'11"
Calculated Area: 221 sq. ft
Included: Yes

Heated: Yes
Finished: Yes
Enclosed: Yes
Contiguous: Yes
Permitted: Yes
Wet space: No
Addition: No
Conversion: No