

Estimated areas

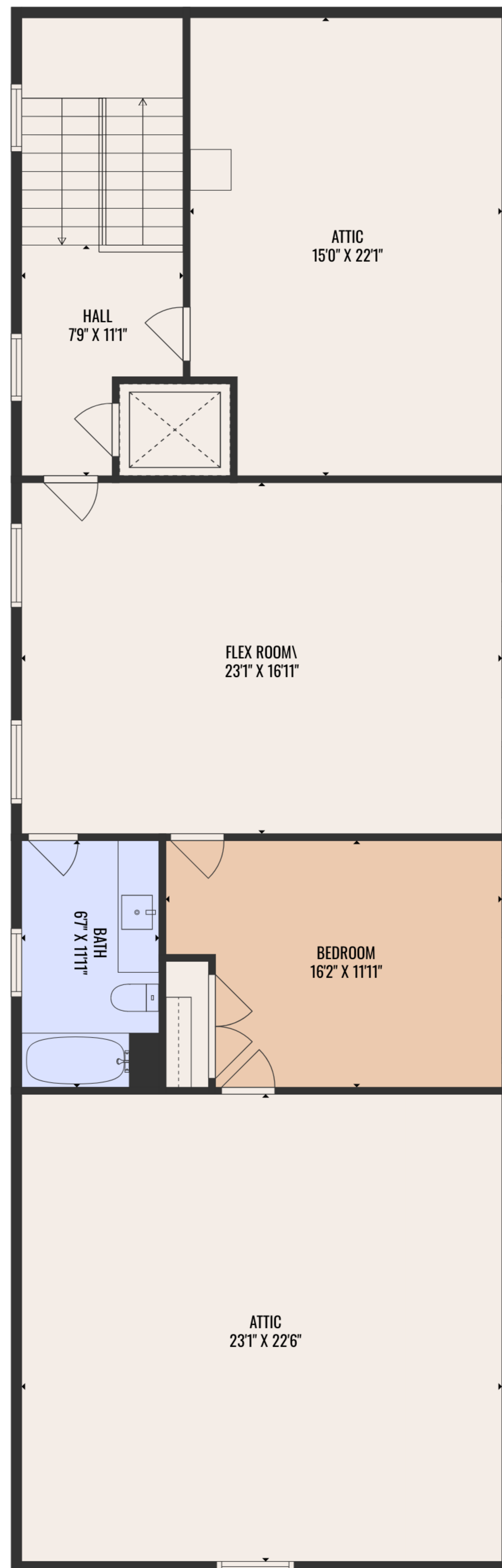
GLA FLOOR 1 - BELOW GRADE: 282 sq. ft, excluded 709 sq. ft
 GLA FLOOR 2: 2924 sq. ft, excluded 1759 sq. ft
 GLA FLOOR 3: 924 sq. ft, excluded 894 sq. ft
 Total GLA 4130 sq. ft, total scanned area 7492 sq. ft



Estimated areas

GLA FLOOR 1 - BELOW GRADE: 282 sq. ft, excluded 709 sq. ft
 GLA FLOOR 2: 2924 sq. ft, excluded 1759 sq. ft
 GLA FLOOR 3: 924 sq. ft, excluded 894 sq. ft
 Total GLA 4130 sq. ft, total scanned area 7492 sq. ft

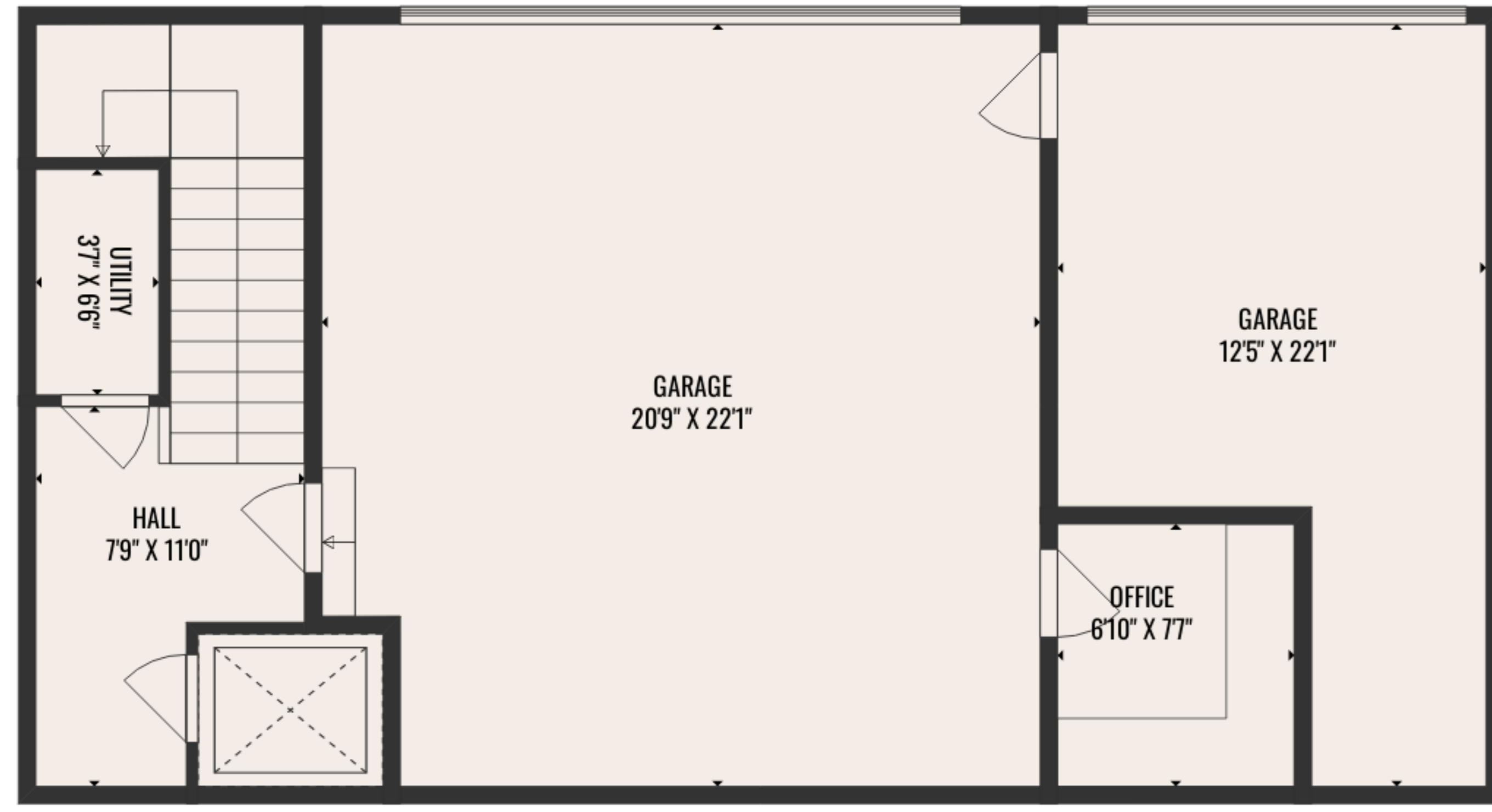
COMPLIES WITH ANSI STANDARDS. APPROXIMATE DIMENSIONS. DRAWING NOT TO SCALE.



Estimated areas

GLA FLOOR 1 - BELOW GRADE: 282 sq. ft, excluded 709 sq. ft
 GLA FLOOR 2: 2924 sq. ft, excluded 1759 sq. ft
 GLA FLOOR 3: 924 sq. ft, excluded 894 sq. ft
 Total GLA 4130 sq. ft, total scanned area 7492 sq. ft

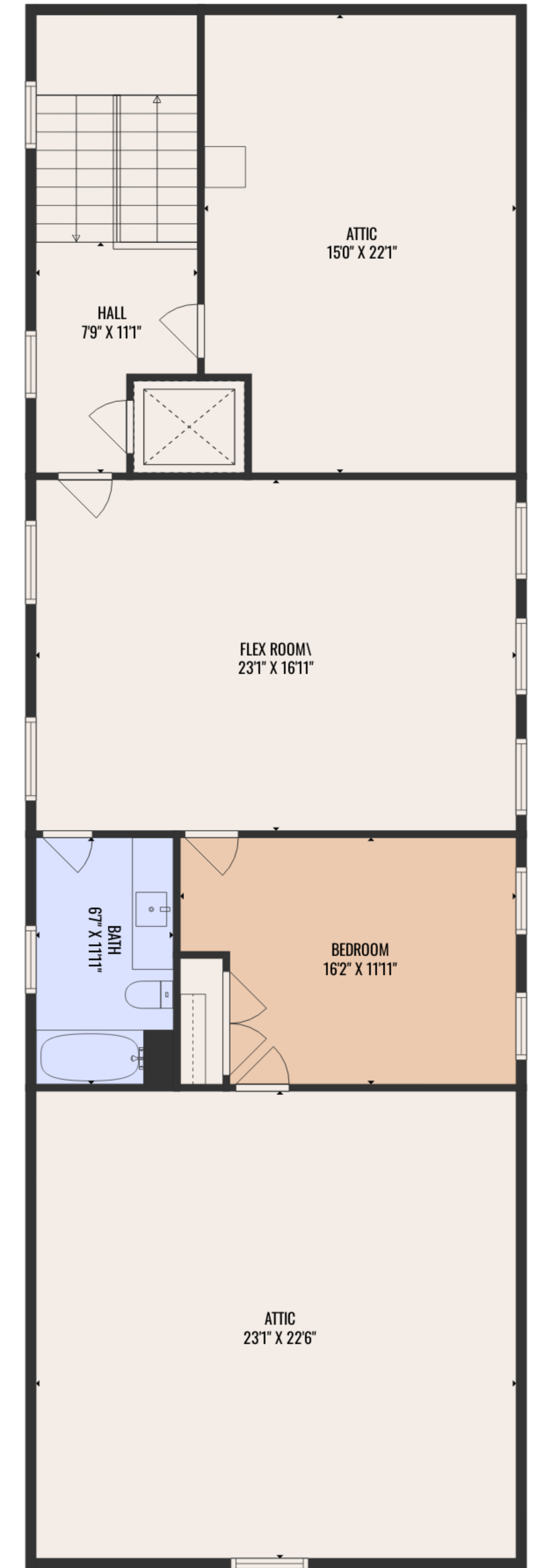
COMPLIES WITH ANSI STANDARDS. APPROXIMATE DIMENSIONS. DRAWING NOT TO SCALE.



FLOOR 1 - BELOW GRADE



FLOOR 2



FLOOR 3

Estimated areas

GLA FLOOR 1 - BELOW GRADE: 282 sq. ft, excluded 709 sq. ft
 GLA FLOOR 2: 2924 sq. ft, excluded 1759 sq. ft
 GLA FLOOR 3: 924 sq. ft, excluded 894 sq. ft
 Total GLA 4130 sq. ft, total scanned area 7492 sq. ft