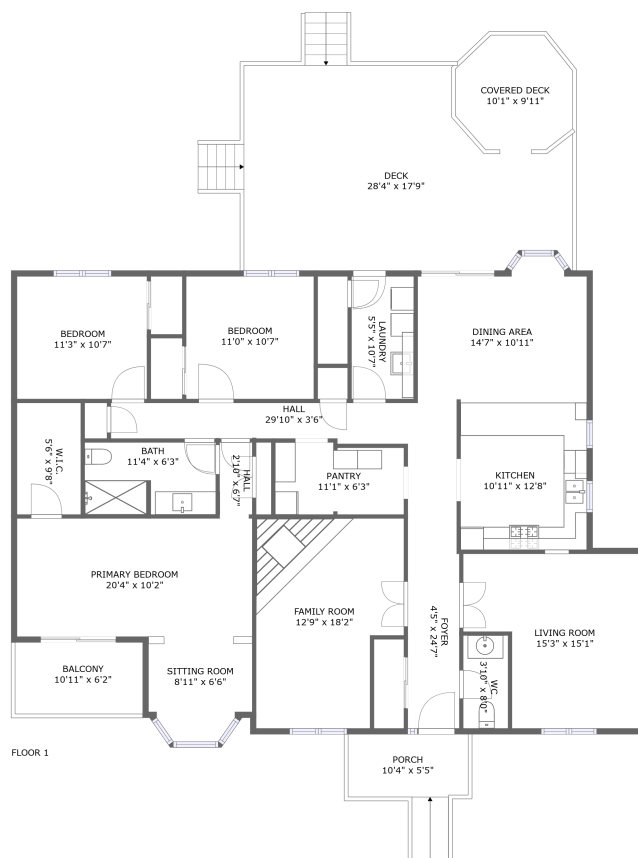


**19943 Bathurst St,East Gwillimbury,ON,CA**



## Property summary



## 0 Garages



### 3 Bedrooms



## 1 Bathrooms



# 1

## Half baths



# 1 Floors



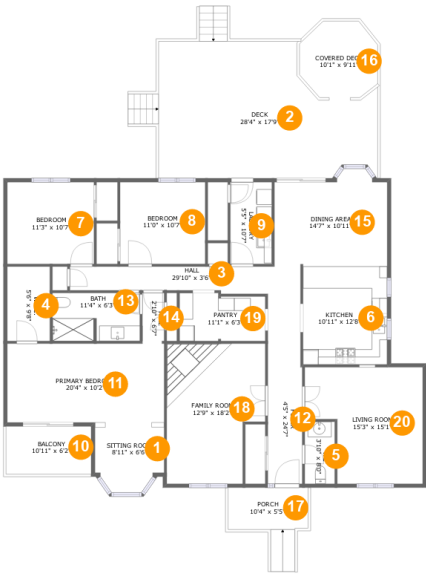
**1,979**  
Gross living  
area sqft



**2,690**  
Total sqft



19943 Bathurst St,East Gwillimbury,ON,CA



Room dimensions

Floor 1 Total sqft: 2690    Living area: 1979

#		Dimensions	sqft	Counted as living area
1	Sitting Room	8'11" x 6'6"	58 sq. ft	Yes
2	Deck	28'4" x 17'9"	468 sq. ft	No
3	Hall	29'10" x 3'6"	97 sq. ft	Yes
4	W.I.C.	5'6" x 9'8"	53 sq. ft	Yes
5	WC	3'10" x 8'0"	31 sq. ft	Yes
6	Kitchen	10'11" x 12'8"	139 sq. ft	Yes
7	Bedroom	11'3" x 10'7"	119 sq. ft	Yes
8	Bedroom	11'0" x 10'7"	117 sq. ft	Yes
9	Laundry	5'5" x 10'7"	57 sq. ft	Yes
10	Balcony	10'11" x 6'2"	68 sq. ft	No
11	Primary Bedroom	20'4" x 10'2"	207 sq. ft	Yes



19943 Bathurst St,East Gwillimbury,ON,CA

#		Dimensions	sqft	Counted as living area
12	Foyer	4'5" x 24'7"	107 sq. ft	Yes
13	Bath	11'4" x 6'3"	69 sq. ft	Yes
14	Hall	2'10" x 6'7"	18 sq. ft	Yes
15	Dining Area	14'7" x 10'11"	159 sq. ft	Yes
16	Covered Deck	10'1" x 9'11"	86 sq. ft	No
17	Porch	10'4" x 5'5"	73 sq. ft	No
18	Family Room	12'9" x 18'2"	208 sq. ft	Yes
19	Pantry	11'1" x 6'3"	66 sq. ft	Yes
20	Living Room	15'3" x 15'1"	195 sq. ft	Yes



19943 Bathurst St,East Gwillimbury,ON,CA

1 Floor 1 - Sitting Room



Dimensions: 8'11" x 6'6"  
Area: 58 sq. ft  
Counted as living area: Yes

Heated: Yes  
Finished: Yes  
Enclosed: Yes  
Contiguous: Yes  
Permitted: Yes  
Wet space: No  
Addition: No  
Conversion: No

2 Floor 1 - Deck



Dimensions: 28'4" x 17'9"  
Area: 468 sq. ft  
Counted as living area: No

Heated: No  
Finished: Yes  
Enclosed: No  
Contiguous: Yes  
Permitted: Yes  
Wet space: No  
Addition: No  
Conversion: No



3 Floor 1 - Hall



Dimensions: 29'10" x 3'6"  
Area: 97 sq. ft  
Counted as living area: Yes

Heated: Yes  
Finished: Yes  
Enclosed: Yes  
Contiguous: Yes  
Permitted: Yes  
Wet space: No  
Addition: No  
Conversion: No

4 Floor 1 - W.I.C.



Dimensions: 5'6" x 9'8"  
Area: 53 sq. ft  
Counted as living area: Yes

Heated: Yes  
Finished: Yes  
Enclosed: Yes  
Contiguous: Yes  
Permitted: Yes  
Wet space: No  
Addition: No  
Conversion: No

5 Floor 1 - WC



Dimensions: 3'10" x 8'0"  
Area: 31 sq. ft  
Counted as living area: Yes

Heated: Yes  
Finished: Yes  
Enclosed: Yes  
Contiguous: Yes  
Permitted: Yes  
Wet space: Yes  
Addition: No  
Conversion: No



19943 Bathurst St,East Gwillimbury,ON,CA

6 Floor 1 - Kitchen



Dimensions: 10'11" x 12'8"  
Area: 139 sq. ft  
Counted as living area: Yes

Heated: Yes  
Finished: Yes  
Enclosed: Yes  
Contiguous: Yes  
Permitted: Yes  
Wet space: No  
Addition: No  
Conversion: No

7 Floor 1 - Bedroom



Dimensions: 11'3" x 10'7"  
Area: 119 sq. ft  
Counted as living area: Yes

Heated: Yes  
Finished: Yes  
Enclosed: Yes  
Contiguous: Yes  
Permitted: Yes  
Wet space: No  
Addition: No  
Conversion: No

8 Floor 1 - Bedroom



Dimensions: 11'0" x 10'7"  
Area: 117 sq. ft  
Counted as living area: Yes

Heated: Yes  
Finished: Yes  
Enclosed: Yes  
Contiguous: Yes  
Permitted: Yes  
Wet space: No  
Addition: No  
Conversion: No



19943 Bathurst St,East Gwillimbury,ON,CA

9 Floor 1 - Laundry



Dimensions: 5'5" x 10'7"  
Area: 57 sq. ft  
Counted as living area: Yes

Heated: Yes  
Finished: Yes  
Enclosed: Yes  
Contiguous: Yes  
Permitted: Yes  
Wet space: No  
Addition: No  
Conversion: No

10 Floor 1 - Balcony



Dimensions: 10'11" x 6'2"  
Area: 68 sq. ft  
Counted as living area: No

Heated: No  
Finished: Yes  
Enclosed: No  
Contiguous: Yes  
Permitted: Yes  
Wet space: No  
Addition: No  
Conversion: No

11 Floor 1 - Primary Bedroom



Dimensions: 20'4" x 10'2"  
Area: 207 sq. ft  
Counted as living area: Yes

Heated: Yes  
Finished: Yes  
Enclosed: Yes  
Contiguous: Yes  
Permitted: Yes  
Wet space: No  
Addition: No  
Conversion: No



12 Floor 1 - Foyer



Dimensions: 4'5" x 24'7"  
Area: 107 sq. ft  
Counted as living area: Yes

Heated: Yes  
Finished: Yes  
Enclosed: Yes  
Contiguous: Yes  
Permitted: Yes  
Wet space: No  
Addition: No  
Conversion: No

13 Floor 1 - Bath



Dimensions: 11'4" x 6'3"  
Area: 69 sq. ft  
Counted as living area: Yes

Heated: Yes  
Finished: Yes  
Enclosed: Yes  
Contiguous: Yes  
Permitted: Yes  
Wet space: Yes  
Addition: No  
Conversion: No

14 Floor 1 - Hall



Dimensions: 2'10" x 6'7"  
Area: 18 sq. ft  
Counted as living area: Yes

Heated: Yes  
Finished: Yes  
Enclosed: Yes  
Contiguous: Yes  
Permitted: Yes  
Wet space: No  
Addition: No  
Conversion: No



## 15 Floor 1 - Dining Area



Dimensions: 14'7" x 10'11"  
Area: 159 sq. ft  
Counted as living area: Yes

Heated: Yes  
Finished: Yes  
Enclosed: Yes  
Contiguous: Yes  
Permitted: Yes  
Wet space: No  
Addition: No  
Conversion: No

## 16 Floor 1 - Covered Deck



Dimensions: 10'1" x 9'11"  
Area: 86 sq. ft  
Counted as living area: No

Heated: No  
Finished: Yes  
Enclosed: No  
Contiguous: Yes  
Permitted: Yes  
Wet space: No  
Addition: No  
Conversion: No

## 17 Floor 1 - Porch



Dimensions: 10'4" x 5'5"  
Area: 73 sq. ft  
Counted as living area: No

Heated: No  
Finished: Yes  
Enclosed: No  
Contiguous: Yes  
Permitted: Yes  
Wet space: No  
Addition: No  
Conversion: No



18 Floor 1 - Family Room



Dimensions: 12'9" x 18'2"  
Area: 208 sq. ft  
Counted as living area: Yes

Heated: Yes  
Finished: Yes  
Enclosed: Yes  
Contiguous: Yes  
Permitted: Yes  
Wet space: No  
Addition: No  
Conversion: No

19 Floor 1 - Pantry



Dimensions: 11'1" x 6'3"  
Area: 66 sq. ft  
Counted as living area: Yes

Heated: Yes  
Finished: Yes  
Enclosed: Yes  
Contiguous: Yes  
Permitted: Yes  
Wet space: No  
Addition: No  
Conversion: No

20 Floor 1 - Living Room



Dimensions: 15'3" x 15'1"  
Area: 195 sq. ft  
Counted as living area: Yes

Heated: Yes  
Finished: Yes  
Enclosed: Yes  
Contiguous: Yes  
Permitted: Yes  
Wet space: No  
Addition: No  
Conversion: No