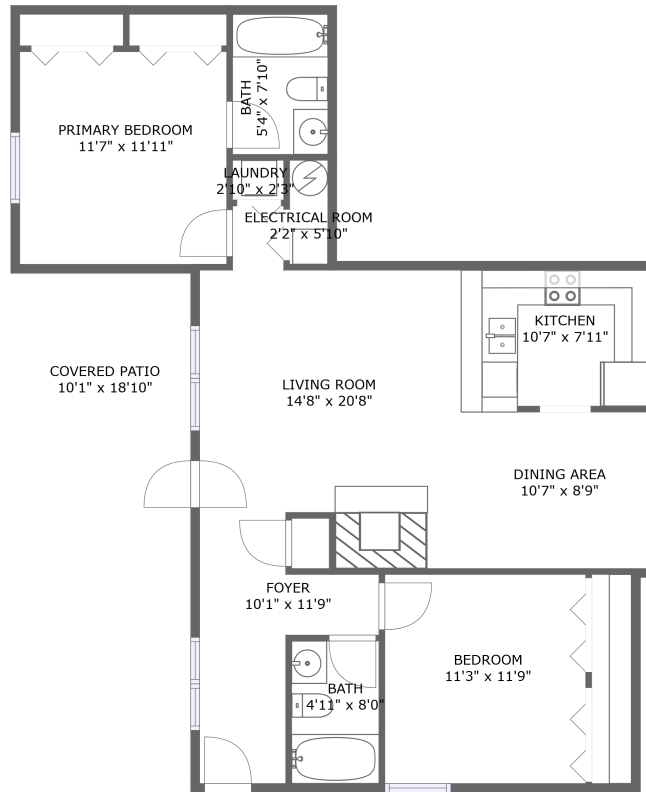


44 Lake Avenue, Clifton Heights, Louisville, Jefferson County, Kentucky, United States,




FLOOR 1

Property Summary

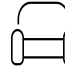
 **0** garages

 **2** bedrooms

 **2** bathrooms

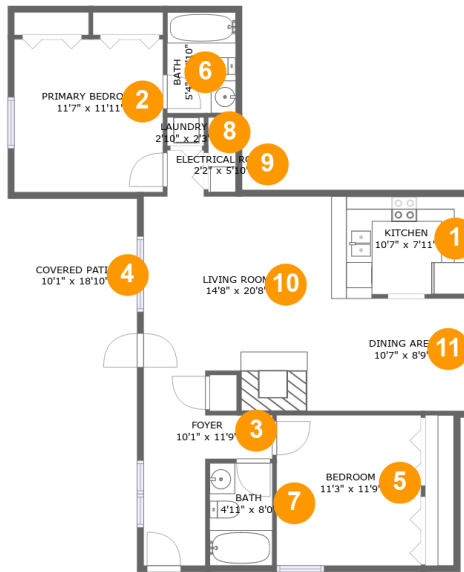
 **0** half baths

 **1** floors

 **1,026** Gross Living Area sqft

 **1,183** total sqft

44 Lake Avenue, Clifton Heights, Louisville, Jefferson County, Kentucky, United States,



Room Dimensions

Floor 1

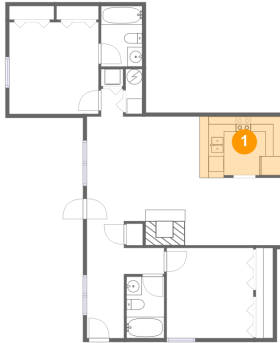
Total sqft: 1183

Living area: 1026

#	Room name	Dimensions	Area (sqft)	Counted as Living Area
1	Kitchen	10'7" x 7'11"	82 sq. ft	Yes
2	Primary Bedroom	11'7" x 11'11"	139 sq. ft	Yes
3	Foyer	10'1" x 11'9"	75 sq. ft	Yes
4	Covered Patio	10'1" x 18'10"	142 sq. ft	No
5	Bedroom	11'3" x 11'9"	132 sq. ft	Yes
6	Bath	5'4" x 7'10"	42 sq. ft	Yes
7	Bath	4'11" x 8'0"	39 sq. ft	Yes
8	Laundry	2'10" x 2'3"	6 sq. ft	Yes
9	Electrical Room	2'2" x 5'10"	13 sq. ft	No
10	Living Room	14'8" x 20'8"	249 sq. ft	Yes
11	Dining Area	10'7" x 8'9"	93 sq. ft	Yes

44 Lake Avenue, Clifton Heights, Louisville, Jefferson County, Kentucky, United States,

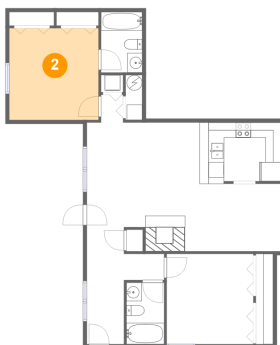
1 Floor 1 - Kitchen



Dimensions: 10'7" x 7'11"
Area: 82 sq. ft
Counted as Living Area:
Yes

Heated: Yes
Finished: Yes
Enclosed: Yes
Contiguous:
Yes
Permitted: Yes
Wet Space: No
Addition: No
Conversion: No

2 Floor 1 - Primary Bedroom

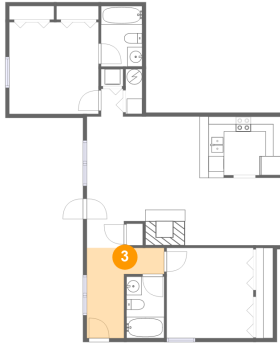


Dimensions: 11'7" x 11'11"
Area: 139 sq. ft
Counted as Living Area:
Yes

Heated: Yes
Finished: Yes
Enclosed: Yes
Contiguous:
Yes
Permitted: Yes
Wet Space: No
Addition: No
Conversion: No

44 Lake Avenue, Clifton Heights, Louisville, Jefferson County, Kentucky, United States,

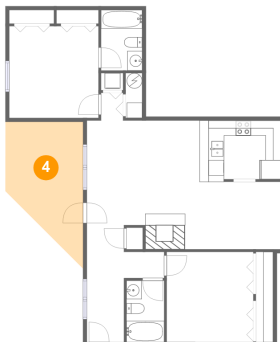
3 Floor 1 - Foyer



Dimensions: 10'1" x 11'9"
Area: 75 sq. ft
Counted as Living Area:
Yes

Heated: Yes
Finished: Yes
Enclosed: Yes
Contiguous:
Yes
Permitted: Yes
Wet Space: No
Addition: No
Conversion: No

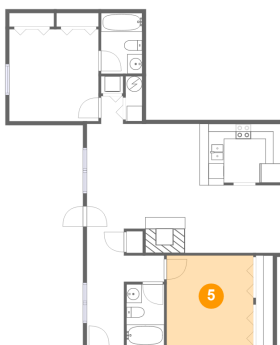
4 Floor 1 - Covered Patio



Dimensions: 10'1" x 18'10"
Area: 142 sq. ft
Counted as Living Area: No

Heated: No
Finished: Yes
Enclosed: No
Contiguous: Yes
Permitted: Yes
Wet Space: No
Addition: No
Conversion: No

5 Floor 1 - Bedroom

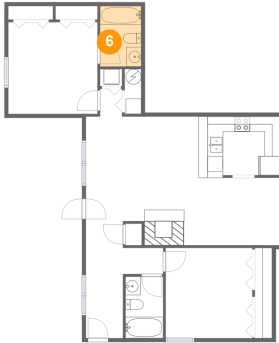


Dimensions: 11'3" x 11'9"
Area: 132 sq. ft
Counted as Living Area:
Yes

Heated: Yes
Finished: Yes
Enclosed: Yes
Contiguous:
Yes
Permitted: Yes
Wet Space: No
Addition: No
Conversion: No

44 Lake Avenue, Clifton Heights, Louisville, Jefferson County, Kentucky, United States,

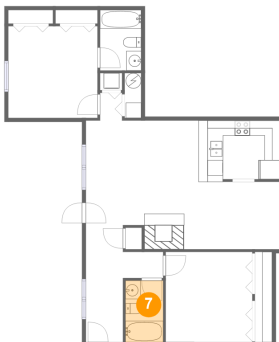
6 Floor 1 - Bath



Dimensions: 5'4" x 7'10"
Area: 42 sq. ft
Counted as Living Area:
Yes

Heated: Yes
Finished: Yes
Enclosed: Yes
Contiguous:
Yes
Permitted: Yes
Wet Space: Yes
Addition: No
Conversion: No

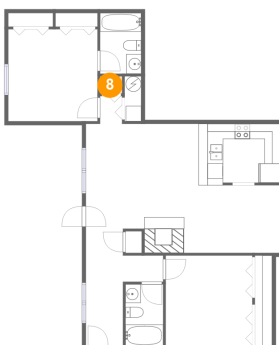
7 Floor 1 - Bath



Dimensions: 4'11" x 8'0"
Area: 39 sq. ft
Counted as Living Area:
Yes

Heated: Yes
Finished: Yes
Enclosed: Yes
Contiguous:
Yes
Permitted: Yes
Wet Space: Yes
Addition: No
Conversion: No

8 Floor 1 - Laundry

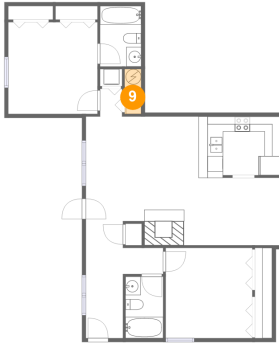


Dimensions: 2'10" x 2'3"
Area: 6 sq. ft
Counted as Living Area:
Yes

Heated: Yes
Finished: Yes
Enclosed: Yes
Contiguous:
Yes
Permitted: Yes
Wet Space: No
Addition: No
Conversion: No

44 Lake Avenue, Clifton Heights, Louisville, Jefferson County, Kentucky, United States,

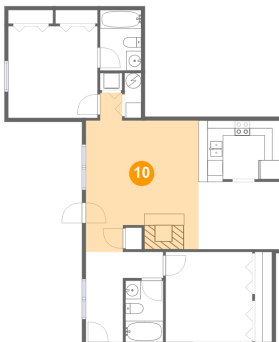
9 Floor 1 - Electrical Room



Dimensions: 2'2" x 5'10"
Area: 13 sq. ft
Counted as Living Area: No

Heated: No
Finished: No
Enclosed: Yes
Contiguous: Yes
Permitted: Yes
Wet Space: No
Addition: No
Conversion: No

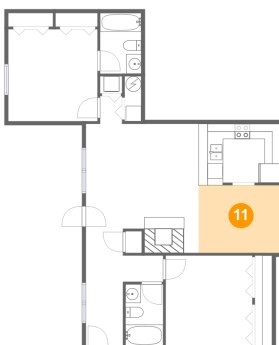
10 Floor 1 - Living Room



Dimensions: 14'8" x 20'8"
Area: 249 sq. ft
Counted as Living Area:
Yes

Heated: Yes
Finished: Yes
Enclosed: Yes
Contiguous:
Yes
Permitted: Yes
Wet Space: No
Addition: No
Conversion: No

11 Floor 1 - Dining Area



Dimensions: 10'7" x 8'9"
Area: 93 sq. ft
Counted as Living Area:
Yes

Heated: Yes
Finished: Yes
Enclosed: Yes
Contiguous:
Yes
Permitted: Yes
Wet Space: No
Addition: No
Conversion: No