

Home report

1293 Parc-du-Village Street, Orléans Central, Convent Glen,
Orléans, Ontario, Canada, K1C 7B2



Total Area: 2121 sq. ft

Below Ground: 594 sq. ft, Floor 2: 789 sq. ft, Floor 3: 738 sq. ft
Excluded: Utility 141 sq. ft, Fireplace 9 sq. ft, Walls: 181 sq. ft

Property summary

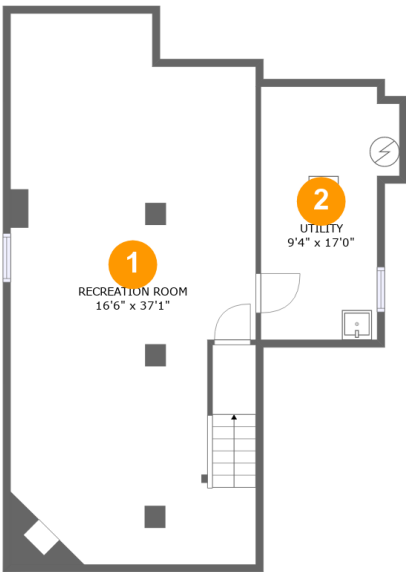
 **3** Floors

 **4** Bedrooms

 **2** Bathrooms

 **1** Half baths

1293 Parc-du-Village Street, Orléans Central, Convent Glen,
Orléans, Ontario, Canada, K1C 7B2



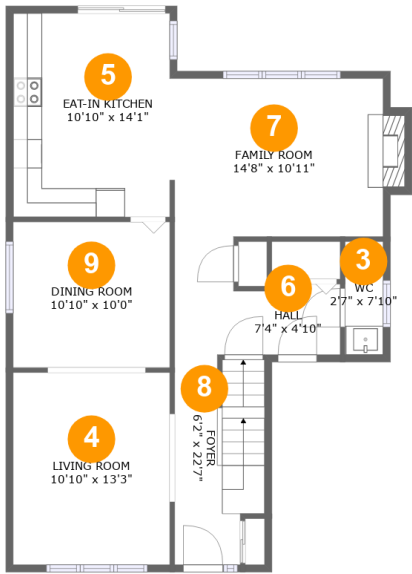
Room dimensions

Floor 1 Below ground Total:594sqft Excluded: 141sqft

#		Max Dimensions	sqft	Included
1	Recreation Room	16'6" x 37'1"	587 sq. ft	Yes
2	Utility	9'4" x 17'0"	141 sq. ft	No

Home report

1293 Parc-du-Village Street, Orléans Central, Convent Glen,
Orléans, Ontario, Canada, K1C 7B2



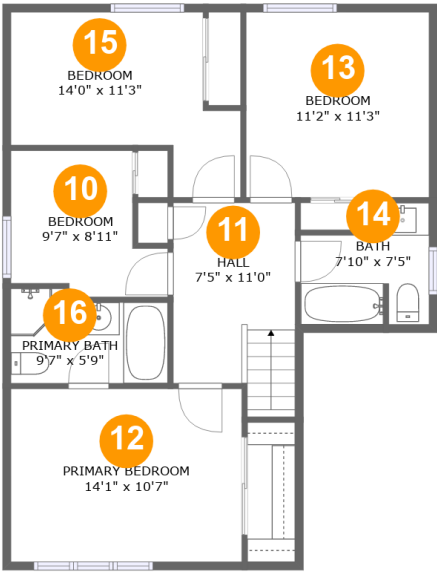
Room dimensions

Floor 2 Total:789sqft Excluded: 9sqft

#		Max Dimensions	sqft	Included
3	WC	2'7" x 7'10"	20 sq. ft	Yes
4	Living Room	10'10" x 13'3"	143 sq. ft	Yes
5	Eat-in Kitchen	10'10" x 14'1"	152 sq. ft	Yes
6	Hall	7'4" x 4'10"	34 sq. ft	Yes
7	Family Room	14'8" x 10'11"	166 sq. ft	Yes
8	Foyer	6'2" x 22'7"	115 sq. ft	Yes
9	Dining Room	10'10" x 10'0"	108 sq. ft	Yes

Home report

1293 Parc-du-Village Street, Orléans Central, Convent Glen,
Orléans, Ontario, Canada, K1C 7B2



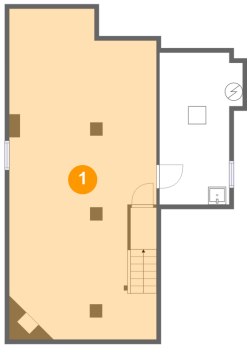
Room dimensions

Floor 3 Total:738sqft Excluded: 0sqft

#		Max Dimensions	sqft	Included
10	Bedroom	9'7" x 8'11"	70 sq. ft	Yes
11	Hall	7'5" x 11'0"	88 sq. ft	Yes
12	Primary Bedroom	14'1" x 10'7"	149 sq. ft	Yes
13	Bedroom	11'2" x 11'3"	126 sq. ft	Yes
14	Bath	7'10" x 7'5"	48 sq. ft	Yes
15	Bedroom	14'0" x 11'3"	113 sq. ft	Yes
16	Primary Bath	9'7" x 5'9"	50 sq. ft	Yes

1293 Parc-du-Village Street, Orléans Central, Convent Glen,
Orléans, Ontario, Canada, K1C 7B2

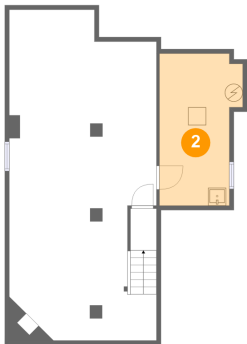
1 Floor 1 - Recreation Room



Max Dimensions: 16'6" x 37'1"
Calculated Area: 587 sq. ft
Included: No

Heated: Yes
Finished: Yes
Enclosed: Yes
Contiguous: No
Permitted: Yes
Wet space: No
Addition: No
Conversion: No

2 Floor 1 - Utility

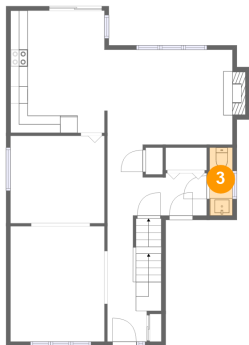


Max Dimensions: 9'4" x 17'0"
Calculated Area: 141 sq. ft
Included: No

Heated: Yes
Finished: No
Enclosed: Yes
Contiguous: Yes
Permitted: Yes
Wet space: No
Addition: No
Conversion: No

1293 Parc-du-Village Street, Orléans Central, Convent Glen,
Orléans, Ontario, Canada, K1C 7B2

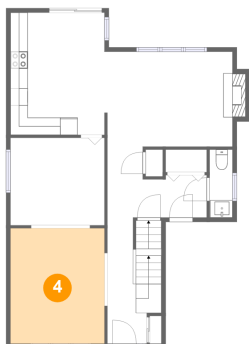
3 Floor 2 - WC



Max Dimensions: 2'7" x 7'10"
Calculated Area: 20 sq. ft
Included: Yes

Heated: Yes
Finished: Yes
Enclosed: Yes
Contiguous: Yes
Permitted: Yes
Wet space: Yes
Addition: No
Conversion: No

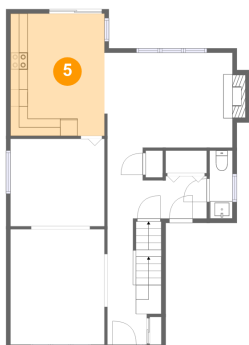
4 Floor 2 - Living Room



Max Dimensions: 10'10" x 13'3"
Calculated Area: 143 sq. ft
Included: Yes

Heated: Yes
Finished: Yes
Enclosed: Yes
Contiguous: Yes
Permitted: Yes
Wet space: No
Addition: No
Conversion: No

5 Floor 2 - Eat-in Kitchen

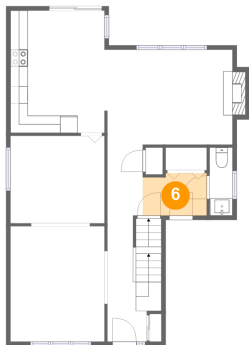


Max Dimensions: 10'10" x 14'1"
Calculated Area: 152 sq. ft
Included: Yes

Heated: Yes
Finished: Yes
Enclosed: Yes
Contiguous: Yes
Permitted: Yes
Wet space: No
Addition: No
Conversion: No

1293 Parc-du-Village Street, Orléans Central, Convent Glen,
Orléans, Ontario, Canada, K1C 7B2

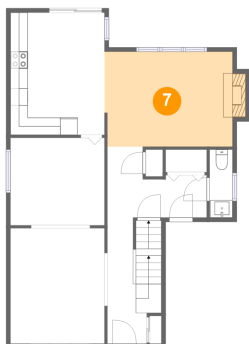
6 Floor 2 - Hall



Max Dimensions: 7'4" x 4'10"
Calculated Area: 34 sq. ft
Included: Yes

Heated: Yes
Finished: Yes
Enclosed: Yes
Contiguous: Yes
Permitted: Yes
Wet space: No
Addition: No
Conversion: No

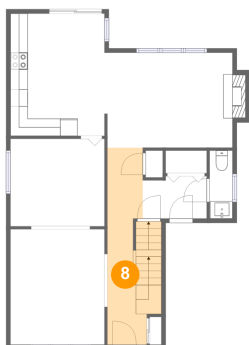
7 Floor 2 - Family Room



Max Dimensions: 14'8" x 10'11"
Calculated Area: 166 sq. ft
Included: Yes

Heated: Yes
Finished: Yes
Enclosed: Yes
Contiguous: Yes
Permitted: Yes
Wet space: No
Addition: No
Conversion: No

8 Floor 2 - Foyer

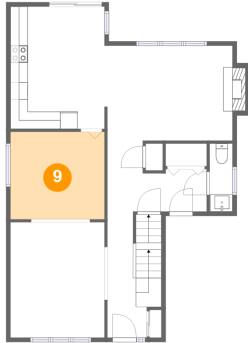


Max Dimensions: 6'2" x 22'7"
Calculated Area: 115 sq. ft
Included: Yes

Heated: Yes
Finished: Yes
Enclosed: Yes
Contiguous: Yes
Permitted: Yes
Wet space: No
Addition: No
Conversion: No

1293 Parc-du-Village Street, Orléans Central, Convent Glen,
Orléans, Ontario, Canada, K1C 7B2

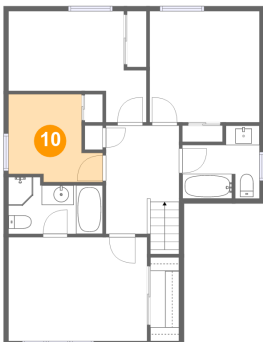
9 Floor 2 - Dining Room



Max Dimensions: 10'10" x 10'0"
Calculated Area: 108 sq. ft
Included: Yes

Heated: Yes
Finished: Yes
Enclosed: Yes
Contiguous: Yes
Permitted: Yes
Wet space: No
Addition: No
Conversion: No

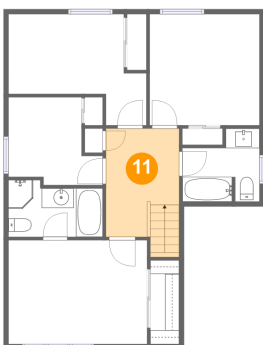
10 Floor 3 - Bedroom



Max Dimensions: 9'7" x 8'11"
Calculated Area: 70 sq. ft
Included: Yes

Heated: Yes
Finished: Yes
Enclosed: Yes
Contiguous: Yes
Permitted: Yes
Wet space: No
Addition: No
Conversion: No

11 Floor 3 - Hall

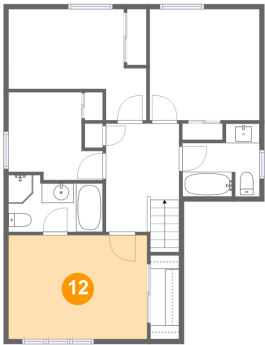


Max Dimensions: 7'5" x 11'0"
Calculated Area: 88 sq. ft
Included: Yes

Heated: Yes
Finished: Yes
Enclosed: Yes
Contiguous: Yes
Permitted: Yes
Wet space: No
Addition: No
Conversion: No

1293 Parc-du-Village Street, Orléans Central, Convent Glen,
Orléans, Ontario, Canada, K1C 7B2

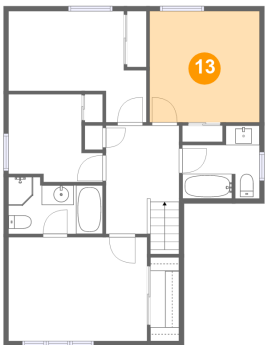
12 Floor 3 - Primary Bedroom



Max Dimensions: 14'1" x 10'7"
Calculated Area: 149 sq. ft
Included: Yes

Heated: Yes
Finished: Yes
Enclosed: Yes
Contiguous: Yes
Permitted: Yes
Wet space: No
Addition: No
Conversion: No

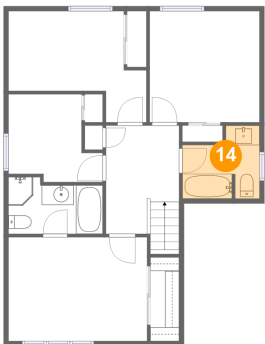
13 Floor 3 - Bedroom



Max Dimensions: 11'2" x 11'3"
Calculated Area: 126 sq. ft
Included: Yes

Heated: Yes
Finished: Yes
Enclosed: Yes
Contiguous: Yes
Permitted: Yes
Wet space: No
Addition: No
Conversion: No

14 Floor 3 - Bath

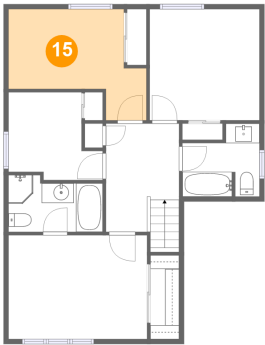


Max Dimensions: 7'10" x 7'5"
Calculated Area: 48 sq. ft
Included: Yes

Heated: Yes
Finished: Yes
Enclosed: Yes
Contiguous: Yes
Permitted: Yes
Wet space: Yes
Addition: No
Conversion: No

1293 Parc-du-Village Street, Orléans Central, Convent Glen,
Orléans, Ontario, Canada, K1C 7B2

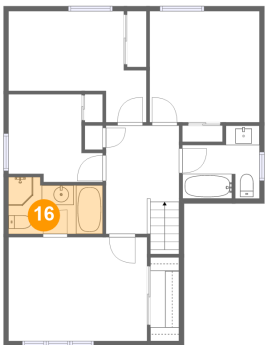
15 Floor 3 - Bedroom



Max Dimensions: 14'0" x 11'3"
Calculated Area: 113 sq. ft
Included: Yes

Heated: Yes
Finished: Yes
Enclosed: Yes
Contiguous: Yes
Permitted: Yes
Wet space: No
Addition: No
Conversion: No

16 Floor 3 - Primary Bath



Max Dimensions: 9'7" x 5'9"
Calculated Area: 50 sq. ft
Included: Yes

Heated: Yes
Finished: Yes
Enclosed: Yes
Contiguous: Yes
Permitted: Yes
Wet space: Yes
Addition: No
Conversion: No