

Home report

5197 Mountain Pass Road, Troutville, Botetourt County, Virginia,
United States, 24175



Total Area: 3367 sq. ft

Below Ground: 1211 sq. ft, Floor 2: 1495 sq. ft, Floor 3: 661 sq. ft

Excluded: Outdoor Patio 209 sq. ft, Utility 84 sq. ft, Utility Laundry 35 sq. ft, Outdoor Porch 208 sq. ft, Garage 737 sq. ft, Embedded window 31 sq. ft, Low Ceiling 58 sq. ft

Property summary

**3** Floors

**3** Bedrooms

**3** Bathrooms

Home report

**5197 Mountain Pass Road, Troutville, Botetourt County, Virginia,
United States, 24175**



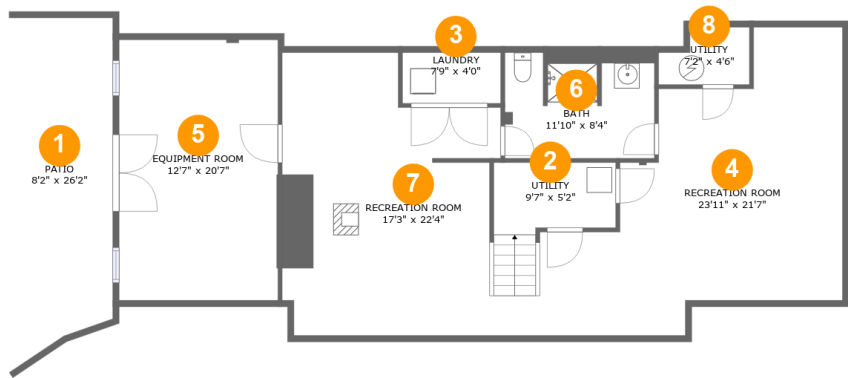
1
Half baths



1
Garages

Home report

5197 Mountain Pass Road, Troutville, Botetourt County, Virginia,
United States, 24175



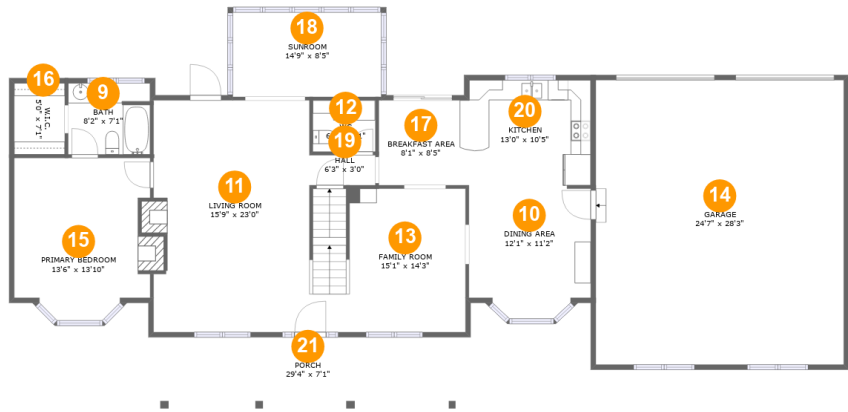
Room dimensions

Floor 1 Below ground Total:1211sqft Excluded: 328sqft

#		Max Dimensions	sqft	Included
1	Patio	8'2" x 26'2"	209 sq. ft	No
2	Utility	9'7" x 5'2"	52 sq. ft	No
3	Laundry	7'9" x 4'0"	31 sq. ft	No
4	Recreation Room	23'11" x 21'7"	406 sq. ft	Yes
5	Equipment Room	12'7" x 20'7"	259 sq. ft	Yes
6	Bath	11'10" x 8'4"	96 sq. ft	Yes
7	Recreation Room	17'3" x 22'4"	337 sq. ft	Yes
8	Utility	7'2" x 4'6"	28 sq. ft	No

Home report

5197 Mountain Pass Road, Troutville, Botetourt County, Virginia,
United States, 24175



Room dimensions

Floor 2 Total:1495sqft Excluded: 976sqft

#		Max Dimensions	sqft	Included
9	Bath	8'2" x 7'1"	57 sq. ft	Yes
10	Dining Area	12'1" x 11'2"	134 sq. ft	Yes
11	Living Room	15'9" x 23'0"	357 sq. ft	Yes
12	WC	6'3" x 5'1"	32 sq. ft	Yes
13	Family Room	15'1" x 14'3"	213 sq. ft	Yes
14	Garage	24'7" x 28'3"	694 sq. ft	No
15	Primary Bedroom	13'6" x 13'10"	187 sq. ft	Yes
16	W.I.C.	5'0" x 7'1"	36 sq. ft	Yes
17	Breakfast Area	8'1" x 8'5"	68 sq. ft	Yes
18	Sunroom	14'9" x 8'5"	124 sq. ft	Yes
19	Hall	6'3" x 3'0"	19 sq. ft	Yes

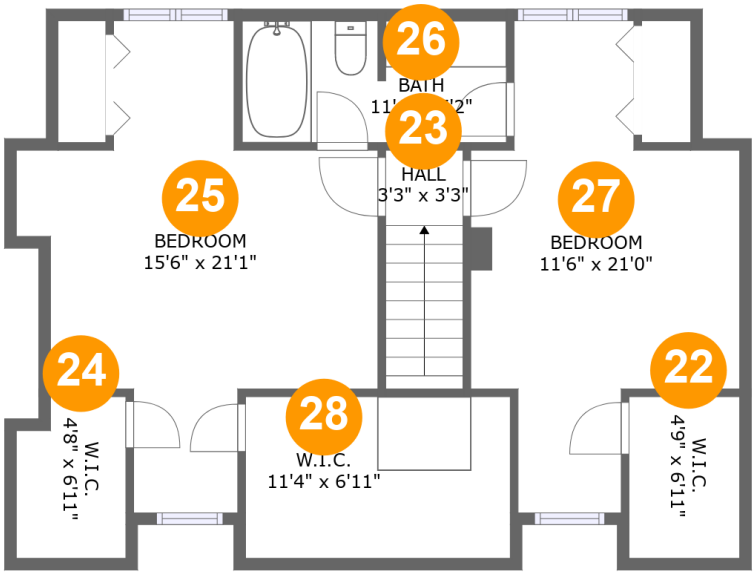
Home report

5197 Mountain Pass Road, Troutville, Botetourt County, Virginia,
United States, 24175

#		Max Dimensions	sqft	Included
20	Kitchen	13'0" x 10'5"	134 sq. ft	Yes
21	Porch	29'4" x 7'1"	208 sq. ft	No

Home report

5197 Mountain Pass Road, Troutville, Botetourt County, Virginia,
United States, 24175

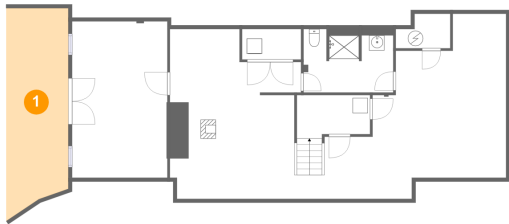


Room dimensions

Floor 3 Total:661sqft Excluded: 58sqft

#		Max Dimensions	sqft	Included
22	W.I.C.	4'9" x 6'11"	24 sq. ft	Yes
23	Hall	3'3" x 3'3"	34 sq. ft	Yes
24	W.I.C.	4'8" x 6'11"	21 sq. ft	Yes
25	Bedroom	15'6" x 21'1"	201 sq. ft	Yes
26	Bath	11'4" x 5'2"	58 sq. ft	Yes
27	Bedroom	11'6" x 21'0"	169 sq. ft	Yes
28	W.I.C.	11'4" x 6'11"	56 sq. ft	Yes

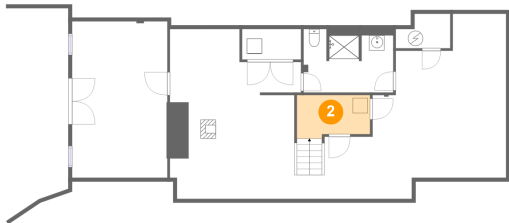
1 Floor 1 - Patio



Max Dimensions: 8'2" x 26'2"
Calculated Area: 209 sq. ft
Included: No

Heated: No
Finished: Yes
Enclosed: No
Contiguous: Yes
Permitted: Yes
Wet space: No
Addition: No
Conversion: No

2 Floor 1 - Utility

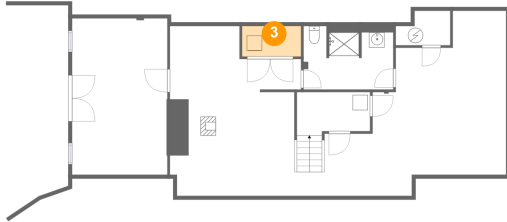


Max Dimensions: 9'7" x 5'2"
Calculated Area: 52 sq. ft
Included: No

Heated: Yes
Finished: No
Enclosed: Yes
Contiguous: Yes
Permitted: Yes
Wet space: No
Addition: No
Conversion: No

5197 Mountain Pass Road, Troutville, Botetourt County, Virginia,
United States, 24175

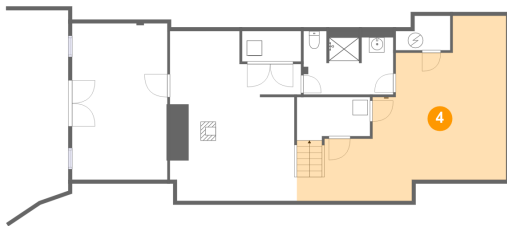
3 Floor 1 - Laundry



Max Dimensions: 7'9" x 4'0"
Calculated Area: 31 sq. ft
Included: No

Heated: Yes
Finished: No
Enclosed: Yes
Contiguous: Yes
Permitted: Yes
Wet space: No
Addition: No
Conversion: No

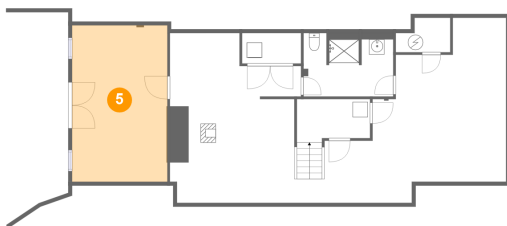
4 Floor 1 - Recreation Room



Max Dimensions: 23'11" x 21'7"
Calculated Area: 406 sq. ft
Included: Yes

Heated: Yes
Finished: Yes
Enclosed: Yes
Contiguous: Yes
Permitted: Yes
Wet space: No
Addition: No
Conversion: No

5 Floor 1 - Equipment Room



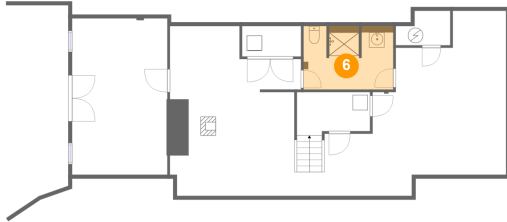
Max Dimensions: 12'7" x 20'7"
Calculated Area: 259 sq. ft
Included: Yes

Heated: Yes
Finished: Yes
Enclosed: Yes
Contiguous: Yes
Permitted: Yes
Wet space: No
Addition: No
Conversion: No

Home report

5197 Mountain Pass Road, Troutville, Botetourt County, Virginia,
United States, 24175

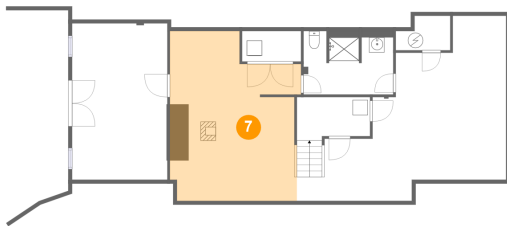
6 Floor 1 - Bath



Max Dimensions: 11'10" x 8'4"
Calculated Area: 96 sq. ft
Included: Yes

Heated: Yes
Finished: Yes
Enclosed: Yes
Contiguous: Yes
Permitted: Yes
Wet space: Yes
Addition: No
Conversion: No

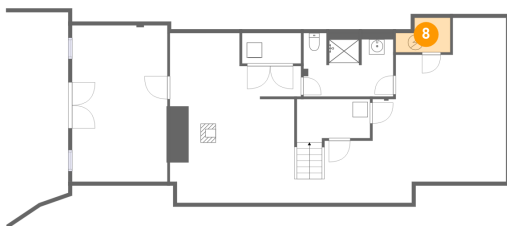
7 Floor 1 - Recreation Room



Max Dimensions: 17'3" x 22'4"
Calculated Area: 337 sq. ft
Included: Yes

Heated: Yes
Finished: Yes
Enclosed: Yes
Contiguous: Yes
Permitted: Yes
Wet space: No
Addition: No
Conversion: No

8 Floor 1 - Utility



Max Dimensions: 7'2" x 4'6"
Calculated Area: 28 sq. ft
Included: No

Heated: Yes
Finished: No
Enclosed: Yes
Contiguous: Yes
Permitted: Yes
Wet space: No
Addition: No
Conversion: No

9 Floor 2 - Bath



Max Dimensions: 8'2" x 7'1"
Calculated Area: 57 sq. ft
Included: Yes

Heated: Yes
Finished: Yes
Enclosed: Yes
Contiguous: Yes
Permitted: Yes
Wet space: Yes
Addition: No
Conversion: No

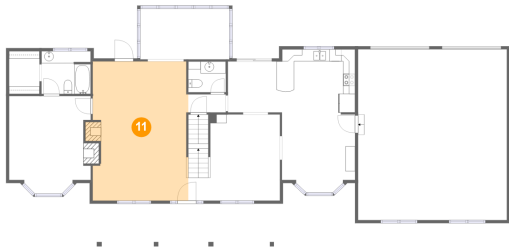
10 Floor 2 - Dining Area



Max Dimensions: 12'1" x 11'2"
Calculated Area: 134 sq. ft
Included: Yes

Heated: Yes
Finished: Yes
Enclosed: Yes
Contiguous: Yes
Permitted: Yes
Wet space: No
Addition: No
Conversion: No

11 Floor 2 - Living Room



Max Dimensions: 15'9" x 23'0"
Calculated Area: 357 sq. ft
Included: Yes

Heated: Yes
Finished: Yes
Enclosed: Yes
Contiguous: Yes
Permitted: Yes
Wet space: No
Addition: No
Conversion: No

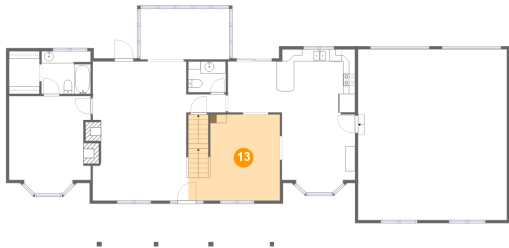
12 Floor 2 - WC



Max Dimensions: 6'3" x 5'1"
Calculated Area: 32 sq. ft
Included: Yes

Heated: Yes
Finished: Yes
Enclosed: Yes
Contiguous: Yes
Permitted: Yes
Wet space: Yes
Addition: No
Conversion: No

13 Floor 2 - Family Room



Max Dimensions: 15'1" x 14'3"
Calculated Area: 213 sq. ft
Included: Yes

Heated: Yes
Finished: Yes
Enclosed: Yes
Contiguous: Yes
Permitted: Yes
Wet space: No
Addition: No
Conversion: No

14 Floor 2 - Garage



Max Dimensions: 24'7" x 28'3"
Calculated Area: 694 sq. ft
Included: No

Heated: No
Finished: No
Enclosed: Yes
Contiguous: Yes
Permitted: Yes
Wet space: No
Addition: No
Conversion: No

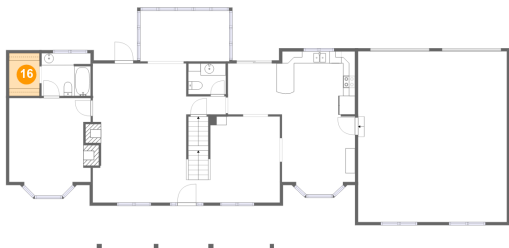
15 Floor 2 - Primary Bedroom



Max Dimensions: 13'6" x 13'10"
Calculated Area: 187 sq. ft
Included: Yes

Heated: Yes
Finished: Yes
Enclosed: Yes
Contiguous: Yes
Permitted: Yes
Wet space: No
Addition: No
Conversion: No

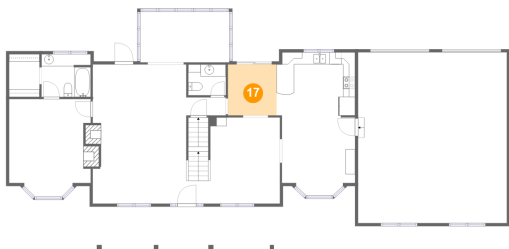
16 Floor 2 - W.I.C.



Max Dimensions: 5'0" x 7'1"
Calculated Area: 36 sq. ft
Included: Yes

Heated: Yes
Finished: Yes
Enclosed: Yes
Contiguous: Yes
Permitted: Yes
Wet space: No
Addition: No
Conversion: No

17 Floor 2 - Breakfast Area



Max Dimensions: 8'1" x 8'5"
Calculated Area: 68 sq. ft
Included: Yes

Heated: Yes
Finished: Yes
Enclosed: Yes
Contiguous: Yes
Permitted: Yes
Wet space: No
Addition: No
Conversion: No

5197 Mountain Pass Road, Troutville, Botetourt County, Virginia,
United States, 24175

18 Floor 2 - Sunroom



Max Dimensions: 14'9" x 8'5"
Calculated Area: 124 sq. ft
Included: Yes

Heated: Yes
Finished: Yes
Enclosed: Yes
Contiguous: Yes
Permitted: Yes
Wet space: No
Addition: No
Conversion: No

19 Floor 2 - Hall



Max Dimensions: 6'3" x 3'0"
Calculated Area: 19 sq. ft
Included: Yes

Heated: Yes
Finished: Yes
Enclosed: Yes
Contiguous: Yes
Permitted: Yes
Wet space: No
Addition: No
Conversion: No

20 Floor 2 - Kitchen



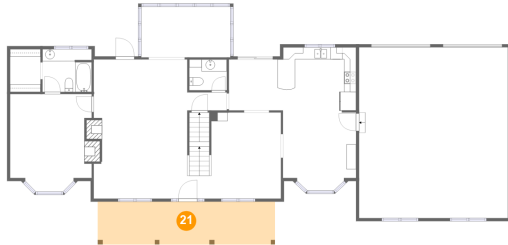
Max Dimensions: 13'0" x 10'5"
Calculated Area: 134 sq. ft
Included: Yes

Heated: Yes
Finished: Yes
Enclosed: Yes
Contiguous: Yes
Permitted: Yes
Wet space: No
Addition: No
Conversion: No

Home report

5197 Mountain Pass Road, Troutville, Botetourt County, Virginia,
United States, 24175

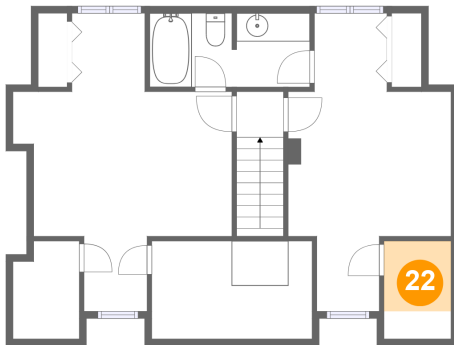
21 Floor 2 - Porch



Max Dimensions: 29'4" x 7'1"
Calculated Area: 208 sq. ft
Included: No

Heated: No
Finished: Yes
Enclosed: No
Contiguous: Yes
Permitted: Yes
Wet space: No
Addition: No
Conversion: No

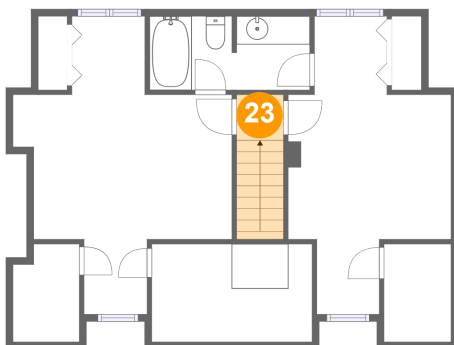
22 Floor 3 - W.I.C.



Max Dimensions: 4'9" x 6'11"
Calculated Area: 24 sq. ft
Included: Yes

Heated: Yes
Finished: Yes
Enclosed: Yes
Contiguous: Yes
Permitted: Yes
Wet space: No
Addition: No
Conversion: No

23 Floor 3 - Hall

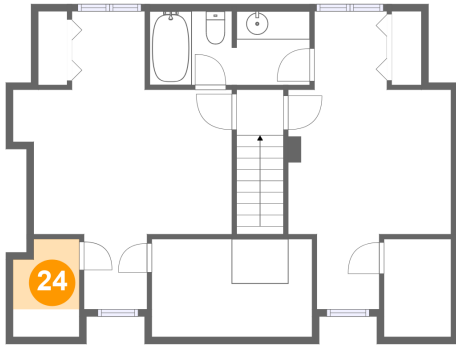


Max Dimensions: 3'3" x 3'3"
Calculated Area: 34 sq. ft
Included: Yes

Heated: Yes
Finished: Yes
Enclosed: Yes
Contiguous: Yes
Permitted: Yes
Wet space: No
Addition: No
Conversion: No

5197 Mountain Pass Road, Troutville, Botetourt County, Virginia,
United States, 24175

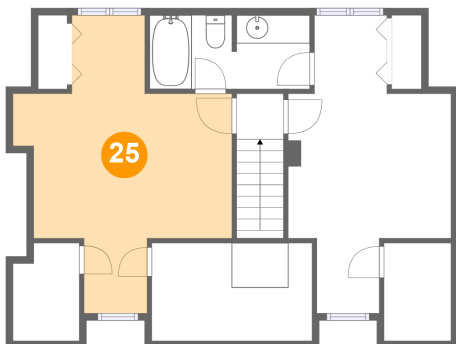
24 Floor 3 - W.I.C.



Max Dimensions: 4'8" x 6'11"
Calculated Area: 21 sq. ft
Included: Yes

Heated: Yes
Finished: Yes
Enclosed: Yes
Contiguous: Yes
Permitted: Yes
Wet space: No
Addition: No
Conversion: No

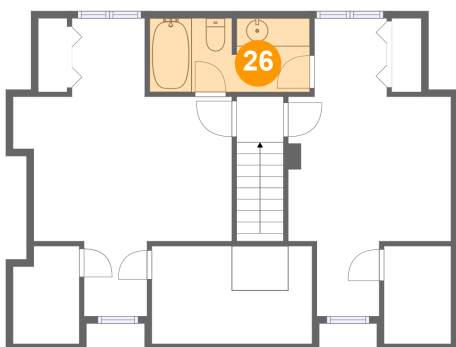
25 Floor 3 - Bedroom



Max Dimensions: 15'6" x 21'1"
Calculated Area: 201 sq. ft
Included: Yes

Heated: Yes
Finished: Yes
Enclosed: Yes
Contiguous: Yes
Permitted: Yes
Wet space: No
Addition: No
Conversion: No

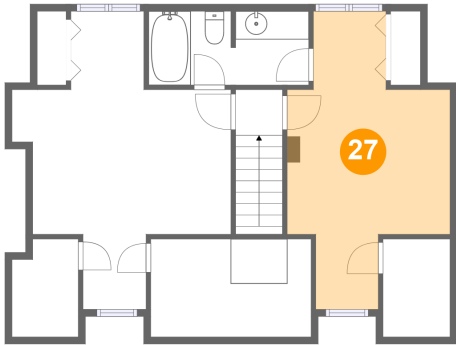
26 Floor 3 - Bath



Max Dimensions: 11'4" x 5'2"
Calculated Area: 58 sq. ft
Included: Yes

Heated: Yes
Finished: Yes
Enclosed: Yes
Contiguous: Yes
Permitted: Yes
Wet space: Yes
Addition: No
Conversion: No

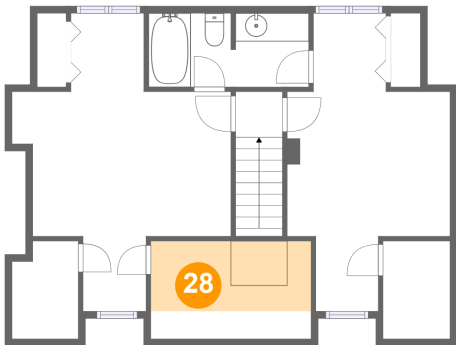
27 Floor 3 - Bedroom



Max Dimensions: 11'6" x 21'0"
Calculated Area: 169 sq. ft
Included: Yes

Heated: Yes
Finished: Yes
Enclosed: Yes
Contiguous: Yes
Permitted: Yes
Wet space: No
Addition: No
Conversion: No

28 Floor 3 - W.I.C.



Max Dimensions: 11'4" x 6'11"
Calculated Area: 56 sq. ft
Included: Yes

Heated: Yes
Finished: Yes
Enclosed: Yes
Contiguous: Yes
Permitted: Yes
Wet space: No
Addition: No
Conversion: No