

Home report

724 Westwood Loop,Lufkin,TX,US



Total Area: 2487 sq. ft
Floor 1: 2199 sq. ft, Floor 2: 288 sq. ft
Excluded: Garage 642 sq. ft, Porch 206 sq. ft, Patio 528 sq. ft, Covered patio 270 sq. ft, Fireplace 11 sq. ft, Walls: 198 sq. ft

Property summary

 **2** Floors

 **3** Bedrooms

 **2** Bathrooms

Home report

724 Westwood Loop,Lufkin,TX,US



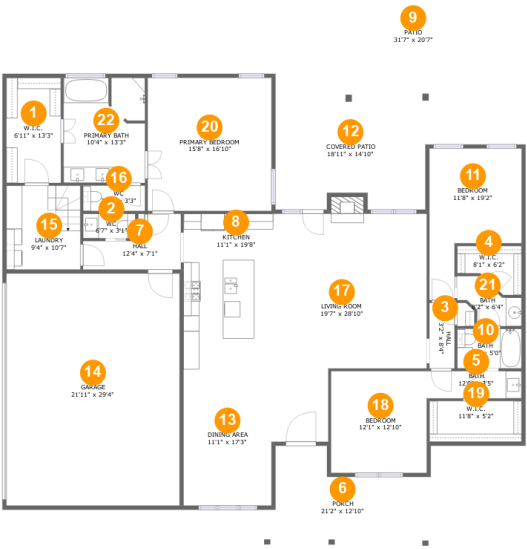
1
Half baths



1
Garages

Home report

724 Westwood Loop,Lufkin,TX,US



Room dimensions

Floor 1 Total:2199sqft Excluded: 1657sqft

#		Max Dimensions	sqft	Included
1	W.I.C.	6'11" x 13'3"	92 sq. ft	Yes
2	WC	6'7" x 3'1"	21 sq. ft	Yes
3	Hall	3'2" x 8'4"	26 sq. ft	Yes
4	W.I.C.	8'1" x 6'2"	39 sq. ft	Yes
5	Bath	12'0" x 3'5"	41 sq. ft	Yes
6	Porch	21'2" x 12'10"	206 sq. ft	No
7	Hall	12'4" x 7'1"	59 sq. ft	Yes
8	Kitchen	11'1" x 19'8"	218 sq. ft	Yes
9	Patio	31'7" x 20'7"	528 sq. ft	No
10	Bath	8'1" x 5'0"	41 sq. ft	Yes
11	Bedroom	11'8" x 19'2"	162 sq. ft	Yes

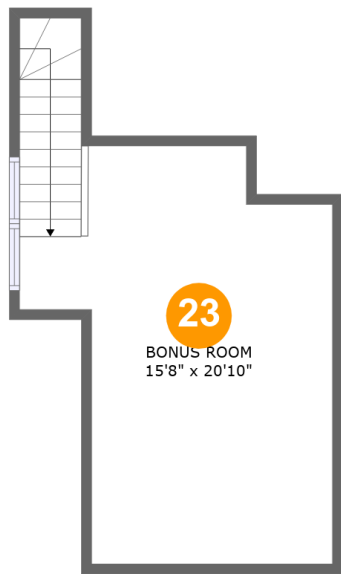
Home report

724 Westwood Loop,Lufkin,TX,US

#		Max Dimensions	sqft	Included
12	Covered Patio	18'11" x 14'10"	270 sq. ft	No
13	Dining Area	11'1" x 17'3"	192 sq. ft	Yes
14	Garage	21'11" x 29'4"	642 sq. ft	No
15	Laundry	9'4" x 10'7"	99 sq. ft	Yes
16	WC	7'10" x 3'3"	25 sq. ft	Yes
17	Living Room	19'7" x 28'10"	459 sq. ft	Yes
18	Bedroom	12'1" x 12'10"	155 sq. ft	Yes
19	W.I.C.	11'8" x 5'2"	60 sq. ft	Yes
20	Primary Bedroom	15'8" x 16'10"	263 sq. ft	Yes
21	Bath	8'2" x 6'4"	33 sq. ft	Yes
22	Primary Bath	10'4" x 13'3"	135 sq. ft	Yes

Home report

724 Westwood Loop,Lufkin,TX,US



Room dimensions

Floor 2 Total:288sqft Excluded: 0sqft

#		Max Dimensions	sqft	Included
23	Bonus Room	15'8" x 20'10"	288 sq. ft	Yes

1 Floor 1 - W.I.C.



Max Dimensions: 6'11" x 13'3"
Calculated Area: 92 sq. ft
Included: Yes

Heated: Yes
Finished: Yes
Enclosed: Yes
Contiguous: Yes
Permitted: Yes
Wet space: No
Addition: No
Conversion: No

2 Floor 1 - WC



Max Dimensions: 6'7" x 3'1"
Calculated Area: 21 sq. ft
Included: Yes

Heated: Yes
Finished: Yes
Enclosed: Yes
Contiguous: Yes
Permitted: Yes
Wet space: No
Addition: No
Conversion: No

3 Floor 1 - Hall



Max Dimensions: 3'2" x 8'4"
Calculated Area: 26 sq. ft
Included: Yes

Heated: Yes
Finished: Yes
Enclosed: Yes
Contiguous: Yes
Permitted: Yes
Wet space: No
Addition: No
Conversion: No

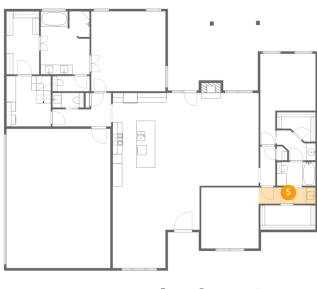
4 Floor 1 - W.I.C.



Max Dimensions: 8'1" x 6'2"
Calculated Area: 39 sq. ft
Included: Yes

Heated: Yes
Finished: Yes
Enclosed: Yes
Contiguous: Yes
Permitted: Yes
Wet space: No
Addition: No
Conversion: No

5 Floor 1 - Bath



Max Dimensions: 12'0" x 3'5"
Calculated Area: 41 sq. ft
Included: Yes

Heated: Yes
Finished: Yes
Enclosed: Yes
Contiguous: Yes
Permitted: Yes
Wet space: Yes
Addition: No
Conversion: No

6 Floor 1 - Porch



Max Dimensions: 21'2" x 12'10"
Calculated Area: 206 sq. ft
Included: No

Heated: No
Finished: Yes
Enclosed: No
Contiguous: Yes
Permitted: Yes
Wet space: No
Addition: No
Conversion: No

7 Floor 1 - Hall



Max Dimensions: 12'4" x 7'1"
Calculated Area: 59 sq. ft
Included: Yes

Heated: Yes
Finished: Yes
Enclosed: Yes
Contiguous: Yes
Permitted: Yes
Wet space: No
Addition: No
Conversion: No

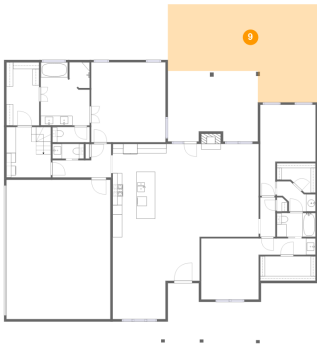
8 Floor 1 - Kitchen



Max Dimensions: 11'1" x 19'8"
Calculated Area: 218 sq. ft
Included: Yes

Heated: Yes
Finished: Yes
Enclosed: Yes
Contiguous: Yes
Permitted: Yes
Wet space: No
Addition: No
Conversion: No

9 Floor 1 - Patio



Max Dimensions: 31'7" x 20'7"
Calculated Area: 528 sq. ft
Included: No

Heated: No
Finished: Yes
Enclosed: No
Contiguous: Yes
Permitted: Yes
Wet space: No
Addition: No
Conversion: No

10 Floor 1 - Bath



Max Dimensions: 8'1" x 5'0"
Calculated Area: 41 sq. ft
Included: Yes

Heated: Yes
Finished: Yes
Enclosed: Yes
Contiguous: Yes
Permitted: Yes
Wet space: Yes
Addition: No
Conversion: No

11 Floor 1 - Bedroom



Max Dimensions: 11'8" x 19'2"
Calculated Area: 162 sq. ft
Included: Yes

Heated: Yes
Finished: Yes
Enclosed: Yes
Contiguous: Yes
Permitted: Yes
Wet space: No
Addition: No
Conversion: No

12 Floor 1 - Covered Patio



Max Dimensions: 18'11" x 14'10"
Calculated Area: 270 sq. ft
Included: No

Heated: No
Finished: Yes
Enclosed: No
Contiguous: Yes
Permitted: Yes
Wet space: No
Addition: No
Conversion: No

13 Floor 1 - Dining Area



Max Dimensions: 11'1" x 17'3"
Calculated Area: 192 sq. ft
Included: Yes

Heated: Yes
Finished: Yes
Enclosed: Yes
Contiguous: Yes
Permitted: Yes
Wet space: No
Addition: No
Conversion: No

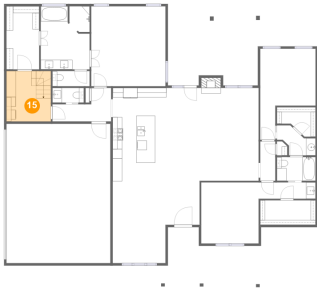
14 Floor 1 - Garage



Max Dimensions: 21'11" x 29'4"
Calculated Area: 642 sq. ft
Included: No

Heated: No
Finished: No
Enclosed: Yes
Contiguous: Yes
Permitted: Yes
Wet space: No
Addition: No
Conversion: No

15 Floor 1 - Laundry



Max Dimensions: 9'4" x 10'7"
Calculated Area: 99 sq. ft
Included: Yes

Heated: Yes
Finished: Yes
Enclosed: Yes
Contiguous: Yes
Permitted: Yes
Wet space: No
Addition: No
Conversion: No

16 Floor 1 - WC



Max Dimensions: 7'10" x 3'3"
Calculated Area: 25 sq. ft
Included: Yes

Heated: Yes
Finished: Yes
Enclosed: Yes
Contiguous: Yes
Permitted: Yes
Wet space: Yes
Addition: No
Conversion: No

17 Floor 1 - Living Room



Max Dimensions: 19'7" x 28'10"
Calculated Area: 459 sq. ft
Included: Yes

Heated: Yes
Finished: Yes
Enclosed: Yes
Contiguous: Yes
Permitted: Yes
Wet space: No
Addition: No
Conversion: No

18 Floor 1 - Bedroom



Max Dimensions: 12'1" x 12'10"
Calculated Area: 155 sq. ft
Included: Yes

Heated: Yes
Finished: Yes
Enclosed: Yes
Contiguous: Yes
Permitted: Yes
Wet space: No
Addition: No
Conversion: No

19 Floor 1 - W.I.C.



Max Dimensions: 11'8" x 5'2"
Calculated Area: 60 sq. ft
Included: Yes

Heated: Yes
Finished: Yes
Enclosed: Yes
Contiguous: Yes
Permitted: Yes
Wet space: No
Addition: No
Conversion: No

20 Floor 1 - Primary Bedroom



Max Dimensions: 15'8" x 16'10"
Calculated Area: 263 sq. ft
Included: Yes

Heated: Yes
Finished: Yes
Enclosed: Yes
Contiguous: Yes
Permitted: Yes
Wet space: No
Addition: No
Conversion: No

21 Floor 1 - Bath



Max Dimensions: 8'2" x 6'4"
Calculated Area: 33 sq. ft
Included: Yes

Heated: Yes
Finished: Yes
Enclosed: Yes
Contiguous: Yes
Permitted: Yes
Wet space: Yes
Addition: No
Conversion: No

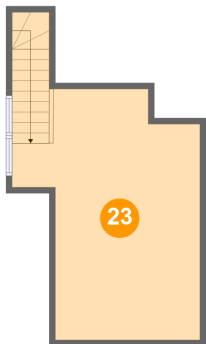
22 Floor 1 - Primary Bath



Max Dimensions: 10'4" x 13'3"
Calculated Area: 135 sq. ft
Included: Yes

Heated: Yes
Finished: Yes
Enclosed: Yes
Contiguous: Yes
Permitted: Yes
Wet space: Yes
Addition: No
Conversion: No

23 Floor 2 - Bonus Room



Max Dimensions: 15'8" x 20'10"
Calculated Area: 288 sq. ft
Included: Yes

Heated: Yes
Finished: Yes
Enclosed: Yes
Contiguous: Yes
Permitted: Yes
Wet space: No
Addition: No
Conversion: No