



Home report


530 Big Sky Drive, Goldsboro, Etters, York County, Pennsylvania,  
United States, 17319





Property summary


 **1** Garages


 **3** Bedrooms

 **2** Bathrooms

 **1** Half baths

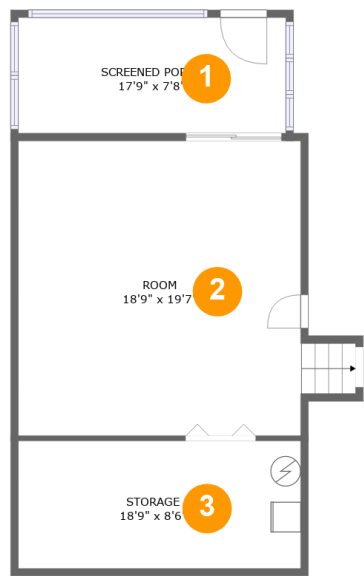
 **4** Floors

 **1,768** Gross living area sqft

 **3,236** Total sqft

Home report

530 Big Sky Drive, Goldsboro, Etters, York County, Pennsylvania,  
United States, 17319



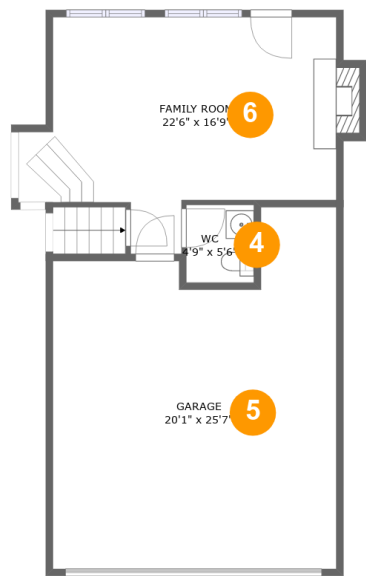
Room dimensions

Floor 1 Total sqft: 749    Living area: 0

#		Dimensions	sqft	Counted as living area
1	Screened Porch	17'9" x 7'8"	136 sq. ft	No
2	Room	18'9" x 19'7"	378 sq. ft	No
3	Storage	18'9" x 8'6"	159 sq. ft	No

Home report

530 Big Sky Drive, Goldsboro, Etters, York County, Pennsylvania,  
United States, 17319



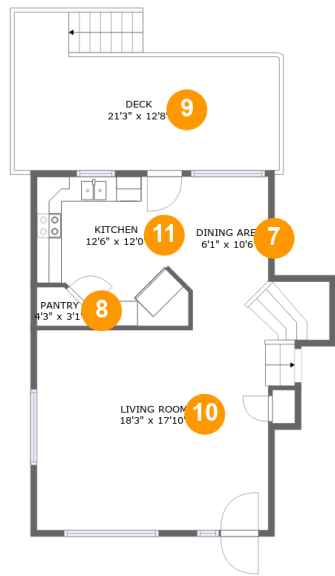
Room dimensions

Floor 2 Total sqft: 869    Living area: 379

#		Dimensions	sqft	Counted as living area
4	WC	4'9" x 5'6"	26 sq. ft	Yes
5	Garage	20'1" x 25'7"	446 sq. ft	No
6	Family Room	22'6" x 16'9"	295 sq. ft	Yes

Home report

530 Big Sky Drive, Goldsboro, Etters, York County, Pennsylvania,  
United States, 17319



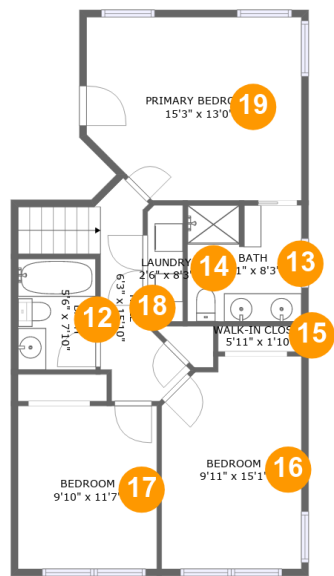
Room dimensions

Floor 3 Total sqft: 845    Living area: 616

#		Dimensions	sqft	Counted as living area
7	Dining Area	6'1" x 10'6"	74 sq. ft	Yes
8	Pantry	4'3" x 3'1"	11 sq. ft	Yes
9	Deck	21'3" x 12'8"	229 sq. ft	No
10	Living Room	18'3" x 17'10"	329 sq. ft	Yes
11	Kitchen	12'6" x 12'0"	135 sq. ft	Yes

Home report

530 Big Sky Drive, Goldsboro, Etters, York County, Pennsylvania,  
United States, 17319

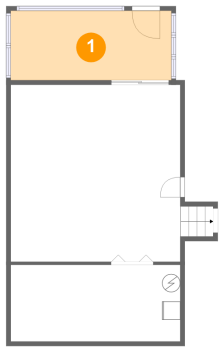


Room dimensions

Floor 4 Total sqft: 773    Living area: 773

#		Dimensions	sqft	Counted as living area
12	Bath	5'6" x 7'10"	43 sq. ft	Yes
13	Bath	8'1" x 8'3"	65 sq. ft	Yes
14	Laundry	2'6" x 8'3"	20 sq. ft	Yes
15	Walk-in Closet	5'11" x 1'10"	11 sq. ft	Yes
16	Bedroom	9'11" x 15'1"	142 sq. ft	Yes
17	Bedroom	9'10" x 11'7"	114 sq. ft	Yes
18	Hall	6'3" x 15'10"	74 sq. ft	Yes
19	Primary Bedroom	15'3" x 13'0"	187 sq. ft	Yes

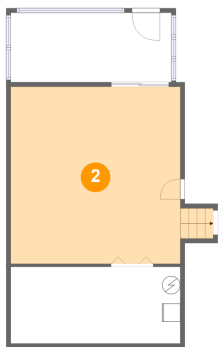
1 Floor 1 - Screened Porch



Dimensions: 17'9" x 7'8"  
Area: 136 sq. ft  
Counted as living area: No

Heated: No  
Finished: Yes  
Enclosed: No  
Contiguous: Yes  
Permitted: Yes  
Wet space: No  
Addition: No  
Conversion: No

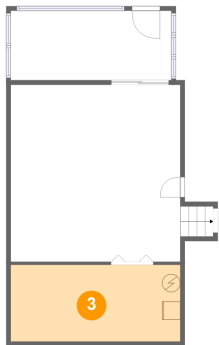
2 Floor 1 - Room



Dimensions: 18'9" x 19'7"  
Area: 378 sq. ft  
Counted as living area: No

Heated: Yes  
Finished: Yes  
Enclosed: Yes  
Contiguous: No  
Permitted: Yes  
Wet space: No  
Addition: No  
Conversion: No

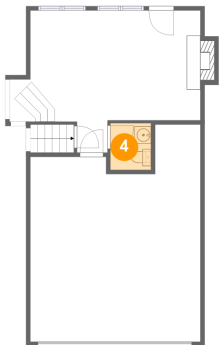
3 Floor 1 - Storage



Dimensions: 18'9" x 8'6"  
Area: 159 sq. ft  
Counted as living area: No

Heated: No  
Finished: No  
Enclosed: No  
Contiguous: Yes  
Permitted: Yes  
Wet space: No  
Addition: No  
Conversion: No

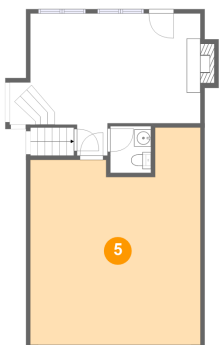
4 Floor 2 - WC



Dimensions: 4'9" x 5'6"  
Area: 26 sq. ft  
Counted as living area: Yes

Heated: Yes  
Finished: Yes  
Enclosed: Yes  
Contiguous: Yes  
Permitted: Yes  
Wet space: Yes  
Addition: No  
Conversion: No

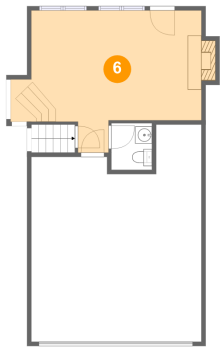
5 Floor 2 - Garage



Dimensions: 20'1" x 25'7"  
Area: 446 sq. ft  
Counted as living area: No

Heated: No  
Finished: No  
Enclosed: Yes  
Contiguous: Yes  
Permitted: Yes  
Wet space: No  
Addition: No  
Conversion: No

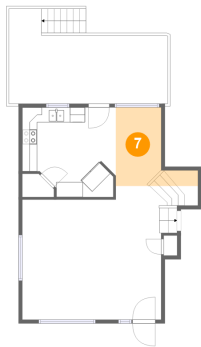
6 Floor 2 - Family Room



Dimensions: 22'6" x 16'9"  
Area: 295 sq. ft  
Counted as living area: Yes

Heated: Yes  
Finished: Yes  
Enclosed: Yes  
Contiguous: Yes  
Permitted: Yes  
Wet space: No  
Addition: No  
Conversion: No

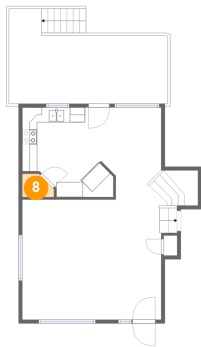
7 Floor 3 - Dining Area



Dimensions: 6'1" x 10'6"  
Area: 74 sq. ft  
Counted as living area: Yes

Heated: Yes  
Finished: Yes  
Enclosed: Yes  
Contiguous: Yes  
Permitted: Yes  
Wet space: No  
Addition: No  
Conversion: No

8 Floor 3 - Pantry

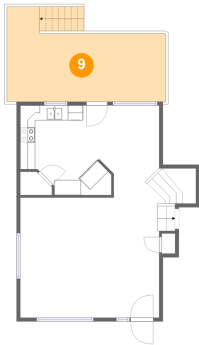


Dimensions: 4'3" x 3'1"  
Area: 11 sq. ft  
Counted as living area: Yes

Heated: Yes  
Finished: Yes  
Enclosed: Yes  
Contiguous: Yes  
Permitted: Yes  
Wet space: No  
Addition: No  
Conversion: No



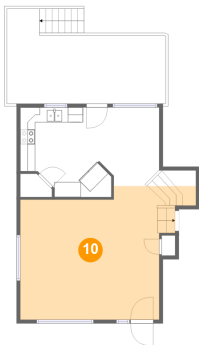
9 Floor 3 - Deck



Dimensions: 21'3" x 12'8"  
Area: 229 sq. ft  
Counted as living area: No

Heated: No  
Finished: Yes  
Enclosed: No  
Contiguous: Yes  
Permitted: Yes  
Wet space: No  
Addition: No  
Conversion: No

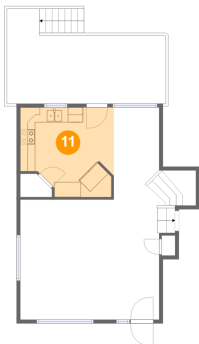
10 Floor 3 - Living Room



Dimensions: 18'3" x 17'10"  
Area: 329 sq. ft  
Counted as living area: Yes

Heated: Yes  
Finished: Yes  
Enclosed: Yes  
Contiguous: Yes  
Permitted: Yes  
Wet space: No  
Addition: No  
Conversion: No

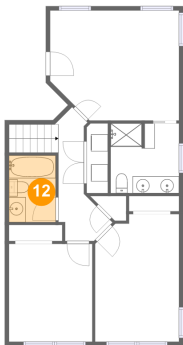
11 Floor 3 - Kitchen



Dimensions: 12'6" x 12'0"  
Area: 135 sq. ft  
Counted as living area: Yes

Heated: Yes  
Finished: Yes  
Enclosed: Yes  
Contiguous: Yes  
Permitted: Yes  
Wet space: No  
Addition: No  
Conversion: No

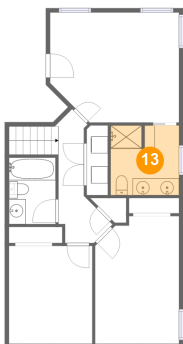
12 Floor 4 - Bath



Dimensions: 5'6" x 7'10"  
Area: 43 sq. ft  
Counted as living area: Yes

Heated: Yes  
Finished: Yes  
Enclosed: Yes  
Contiguous: Yes  
Permitted: Yes  
Wet space: Yes  
Addition: No  
Conversion: No

13 Floor 4 - Bath



Dimensions: 8'1" x 8'3"  
Area: 65 sq. ft  
Counted as living area: Yes

Heated: Yes  
Finished: Yes  
Enclosed: Yes  
Contiguous: Yes  
Permitted: Yes  
Wet space: Yes  
Addition: No  
Conversion: No

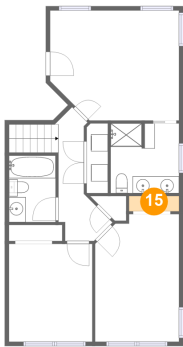
14 Floor 4 - Laundry



Dimensions: 2'6" x 8'3"  
Area: 20 sq. ft  
Counted as living area: Yes

Heated: Yes  
Finished: Yes  
Enclosed: Yes  
Contiguous: Yes  
Permitted: Yes  
Wet space: No  
Addition: No  
Conversion: No

15 Floor 4 - Walk-in Closet



Dimensions: 5'11" x 1'10"  
Area: 11 sq. ft  
Counted as living area: Yes

Heated: Yes  
Finished: Yes  
Enclosed: Yes  
Contiguous: Yes  
Permitted: Yes  
Wet space: No  
Addition: No  
Conversion: No

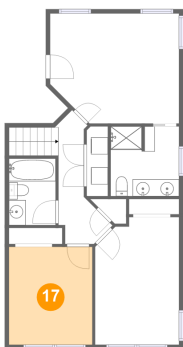
16 Floor 4 - Bedroom



Dimensions: 9'11" x 15'1"  
Area: 142 sq. ft  
Counted as living area: Yes

Heated: Yes  
Finished: Yes  
Enclosed: Yes  
Contiguous: Yes  
Permitted: Yes  
Wet space: No  
Addition: No  
Conversion: No

17 Floor 4 - Bedroom



Dimensions: 9'10" x 11'7"  
Area: 114 sq. ft  
Counted as living area: Yes

Heated: Yes  
Finished: Yes  
Enclosed: Yes  
Contiguous: Yes  
Permitted: Yes  
Wet space: No  
Addition: No  
Conversion: No

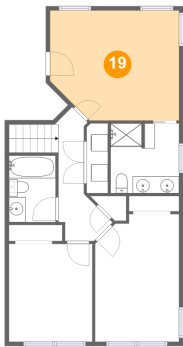
18 Floor 4 - Hall



Dimensions: 6'3" x 15'10"  
Area: 74 sq. ft  
Counted as living area: Yes

Heated: Yes  
Finished: Yes  
Enclosed: Yes  
Contiguous: Yes  
Permitted: Yes  
Wet space: No  
Addition: No  
Conversion: No

19 Floor 4 - Primary Bedroom



Dimensions: 15'3" x 13'0"  
Area: 187 sq. ft  
Counted as living area: Yes

Heated: Yes  
Finished: Yes  
Enclosed: Yes  
Contiguous: Yes  
Permitted: Yes  
Wet space: No  
Addition: No  
Conversion: No