



Total Area: 1567 sq. ft

1st Floor: 678 sq. ft, 2nd Floor: 889 sq. ft

Excluded: Garage 195 sq. ft, Porch 85 sq. ft, Patio 15 sq. ft, Balcony 78 sq. ft, Walls: 142 sq. ft

Property summary



Home data report



543 Cabis Bay St, Las Vegas, NV, US

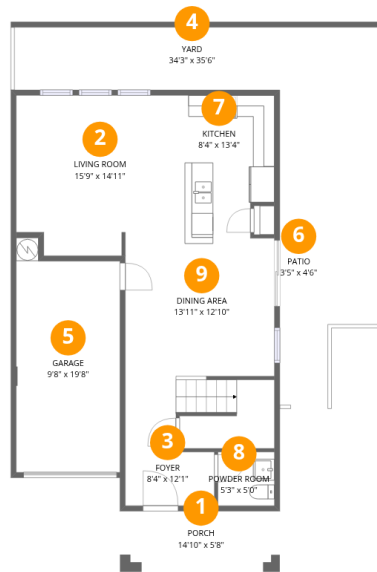


1
Half baths



1
Garages

543 Cabis Bay St, Las Vegas, NV, US

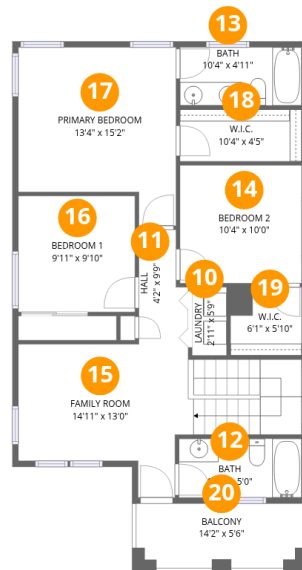


Room dimensions

Floor 1

Total: 678 sqft Excluded: 295 sqft

#		Dimensions	sqft	Counted as living area
1	Porch	14'10" x 5'8"	84 sq. ft	No
2	Living Room	15'9" x 14'11"	234 sq. ft	Yes
3	Foyer	8'4" x 12'1"	100 sq. ft	Yes
4	Yard	34'3" x 35'6"	1216 sq. ft	No
5	Garage	9'8" x 19'8"	190 sq. ft	No
6	Patio	3'5" x 4'6"	15 sq. ft	No
7	Kitchen	8'4" x 13'4"	111 sq. ft	Yes
8	Powder Room	5'3" x 5'0"	26 sq. ft	Yes
9	Dining Area	13'11" x 12'10"	179 sq. ft	Yes



Room dimensions

Floor 2

Total: 889 sqft Excluded: 78 sqft

#		Dimensions	sqft	Counted as living area
10	Laundry	2'11" x 5'9"	17 sq. ft	Yes
11	Hall	4'2" x 9'9"	41 sq. ft	Yes
12	Bath	10'5" x 5'0"	52 sq. ft	Yes
13	Bath	10'4" x 4'11"	51 sq. ft	Yes
14	Bedroom 2	10'4" x 10'0"	104 sq. ft	Yes
15	Family Room	14'11" x 13'0"	194 sq. ft	Yes
16	Bedroom 1	9'11" x 9'10"	98 sq. ft	Yes
17	Primary Bedroom	13'4" x 15'2"	203 sq. ft	Yes
18	W.I.C.	10'4" x 4'5"	46 sq. ft	Yes
19	W.I.C.	6'1" x 5'10"	35 sq. ft	Yes
20	Balcony	14'2" x 5'6"	78 sq. ft	No

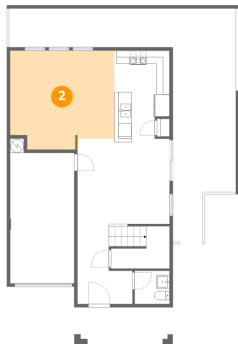
1 Floor 1 - Porch



Dimensions: 14'10" x 5'8"
Area: 84 sq. ft
Counted as living area: No

Heated: No
Finished: No
Enclosed: No
Contiguous: Yes
Permitted: Yes
Wet space: No
Addition: No
Conversion: No

2 Floor 1 - Living Room



Dimensions: 15'9" x 14'11"
Area: 234 sq. ft
Counted as living area: Yes

Heated: Yes
Finished: Yes
Enclosed: Yes
Contiguous: Yes
Permitted: Yes
Wet space: No
Addition: No
Conversion: No

3 Floor 1 - Foyer



Dimensions: 8'4" x 12'1"
Area: 100 sq. ft
Counted as living area: Yes

Heated: Yes
Finished: Yes
Enclosed: Yes
Contiguous: Yes
Permitted: Yes
Wet space: No
Addition: No
Conversion: No

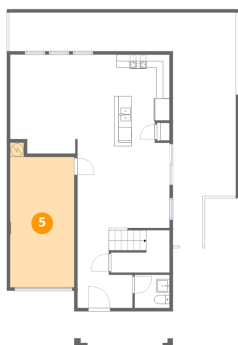
4 Floor 1 - Yard



Dimensions: 34'3" x 35'6"
Area: 1216 sq. ft
Counted as living area: No

Heated: No
Finished: No
Enclosed: No
Contiguous: Yes
Permitted: No
Wet space: No
Addition: No
Conversion: No

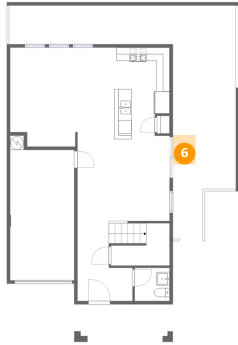
5 Floor 1 - Garage



Dimensions: 9'8" x 19'8"
Area: 190 sq. ft
Counted as living area: No

Heated: No
Finished: No
Enclosed: Yes
Contiguous: Yes
Permitted: Yes
Wet space: No
Addition: No
Conversion: No

6 Floor 1 - Patio



Dimensions: 3'5" x 4'6"
Area: 15 sq. ft
Counted as living area: No

Heated: No
Finished: No
Enclosed: No
Contiguous: Yes
Permitted: Yes
Wet space: No
Addition: No
Conversion: No

7 Floor 1 - Kitchen



Dimensions: 8'4" x 13'4"
Area: 111 sq. ft
Counted as living area: Yes

Heated: Yes
Finished: Yes
Enclosed: Yes
Contiguous: Yes
Permitted: Yes
Wet space: No
Addition: No
Conversion: No

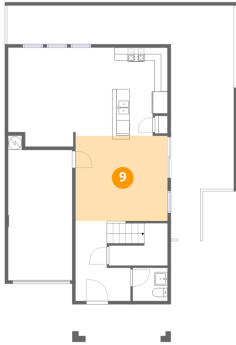
8 Floor 1 - Powder Room



Dimensions: 5'3" x 5'0"
Area: 26 sq. ft
Counted as living area: Yes

Heated: Yes
Finished: Yes
Enclosed: Yes
Contiguous: Yes
Permitted: Yes
Wet space: Yes
Addition: No
Conversion: No

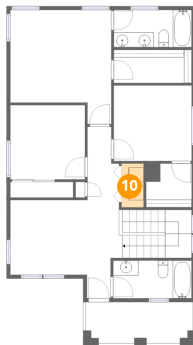
9 Floor 1 - Dining Area



Dimensions: 13'11" x 12'10"
Area: 179 sq. ft
Counted as living area: Yes

Heated: Yes
Finished: Yes
Enclosed: Yes
Contiguous: Yes
Permitted: Yes
Wet space: No
Addition: No
Conversion: No

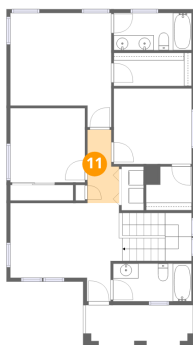
10 Floor 2 - Laundry



Dimensions: 2'11" x 5'9"
Area: 17 sq. ft
Counted as living area: Yes

Heated: Yes
Finished: Yes
Enclosed: Yes
Contiguous: Yes
Permitted: Yes
Wet space: No
Addition: No
Conversion: No

11 Floor 2 - Hall



Dimensions: 4'2" x 9'9"
Area: 41 sq. ft
Counted as living area: Yes

Heated: Yes
Finished: Yes
Enclosed: Yes
Contiguous: Yes
Permitted: Yes
Wet space: No
Addition: No
Conversion: No



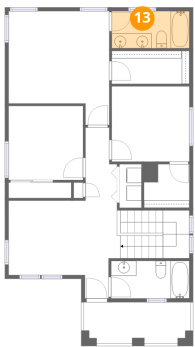
12 Floor 2 - Bath



Dimensions: 10'5" x 5'0"
Area: 52 sq. ft
Counted as living area: Yes

Heated: Yes
Finished: Yes
Enclosed: Yes
Contiguous: Yes
Permitted: Yes
Wet space: Yes
Addition: No
Conversion: No

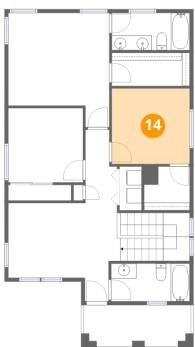
13 Floor 2 - Bath



Dimensions: 10'4" x 4'11"
Area: 51 sq. ft
Counted as living area: Yes

Heated: Yes
Finished: Yes
Enclosed: Yes
Contiguous: Yes
Permitted: Yes
Wet space: Yes
Addition: No
Conversion: No

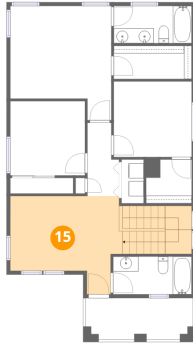
14 Floor 2 - Bedroom 2



Dimensions: 10'4" x 10'0"
Area: 104 sq. ft
Counted as living area: Yes

Heated: Yes
Finished: Yes
Enclosed: Yes
Contiguous: Yes
Permitted: Yes
Wet space: No
Addition: No
Conversion: No

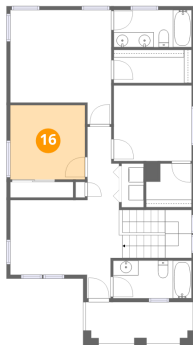
15 Floor 2 - Family Room



Dimensions: 14'11" x 13'0"
Area: 194 sq. ft
Counted as living area: Yes

Heated: Yes
Finished: Yes
Enclosed: Yes
Contiguous: Yes
Permitted: Yes
Wet space: No
Addition: No
Conversion: No

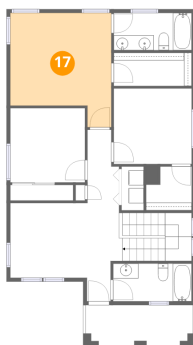
16 Floor 2 - Bedroom 1



Dimensions: 9'11" x 9'10"
Area: 98 sq. ft
Counted as living area: Yes

Heated: Yes
Finished: Yes
Enclosed: Yes
Contiguous: Yes
Permitted: Yes
Wet space: No
Addition: No
Conversion: No

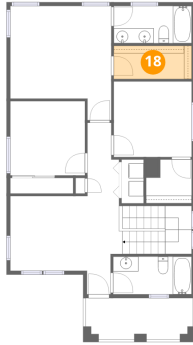
17 Floor 2 - Primary Bedroom



Dimensions: 13'4" x 15'2"
Area: 203 sq. ft
Counted as living area: Yes

Heated: Yes
Finished: Yes
Enclosed: Yes
Contiguous: Yes
Permitted: Yes
Wet space: No
Addition: No
Conversion: No

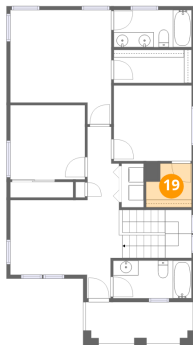
18 Floor 2 - W.I.C.



Dimensions: 10'4" x 4'5"
Area: 46 sq. ft
Counted as living area: Yes

Heated: Yes
Finished: Yes
Enclosed: Yes
Contiguous: Yes
Permitted: Yes
Wet space: No
Addition: No
Conversion: No

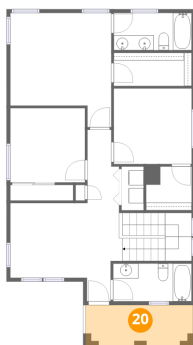
19 Floor 2 - W.I.C.



Dimensions: 6'1" x 5'10"
Area: 35 sq. ft
Counted as living area: Yes

Heated: Yes
Finished: Yes
Enclosed: Yes
Contiguous: Yes
Permitted: Yes
Wet space: No
Addition: No
Conversion: No

20 Floor 2 - Balcony



Dimensions: 14'2" x 5'6"
Area: 78 sq. ft
Counted as living area: No

Heated: No
Finished: No
Enclosed: No
Contiguous: Yes
Permitted: Yes
Wet space: No
Addition: No
Conversion: No