


Home report


51888 Johnstown Rd,Soldiers Grove,WI,US




Property summary




0
Garages



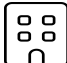
5
Bedrooms




1
Bathrooms




1
Half baths



3
Floors



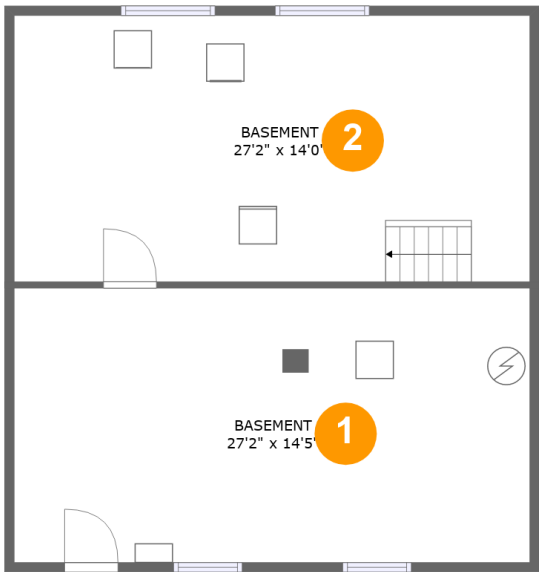
2,101
Gross living
area sqft



3,275
Total sqft

Home report

51888 Johnstown Rd,Soldiers Grove,WI,US



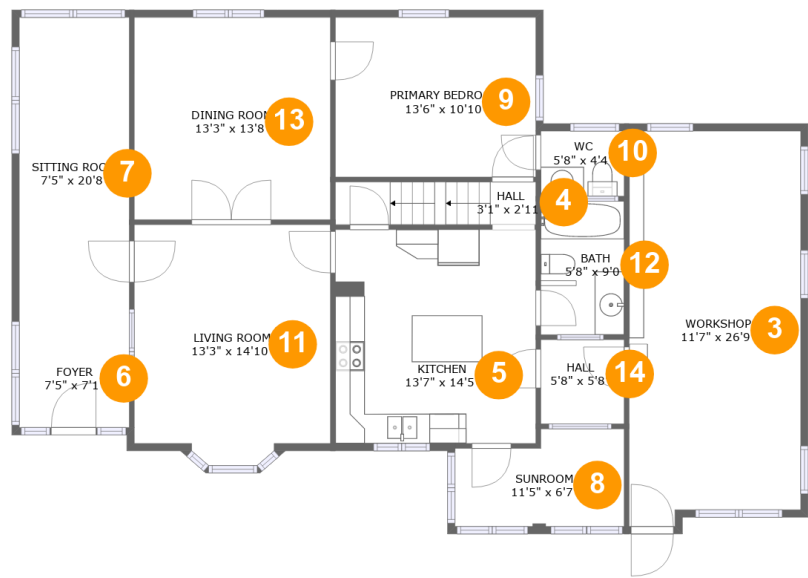
Room dimensions

Floor 1 Total sqft: 840 Living area: 0

#		Max Dimensions	sqft	Included
1	Basement	27'2" x 14'5"	393 sq. ft	No
2	Basement	27'2" x 14'0"	381 sq. ft	No

Home report

51888 Johnstown Rd,Soldiers Grove,WI,US



Room dimensions

Floor 2

Total sqft: 1595

Living area: 1261

#		Max Dimensions	sqft	Included
3	Workshop	11'7" x 26'9"	301 sq. ft	No
4	Hall	3'1" x 2'11"	39 sq. ft	Yes
5	Kitchen	13'7" x 14'5"	196 sq. ft	Yes
6	Foyer	7'5" x 7'1"	53 sq. ft	Yes
7	Sitting Room	7'5" x 20'8"	154 sq. ft	Yes
8	Sunroom	11'5" x 6'7"	68 sq. ft	Yes
9	Primary Bedroom	13'6" x 10'10"	146 sq. ft	Yes
10	WC	5'8" x 4'4"	25 sq. ft	Yes
11	Living Room	13'3" x 14'10"	196 sq. ft	Yes
12	Bath	5'8" x 9'0"	51 sq. ft	Yes
13	Dining Room	13'3" x 13'8"	182 sq. ft	Yes

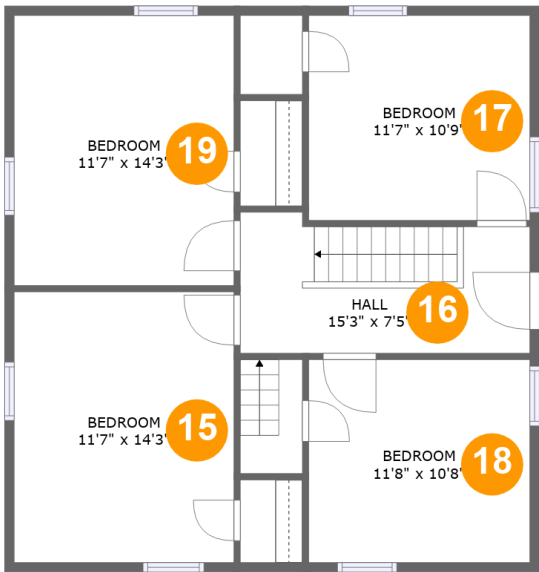
Home report

51888 Johnstown Rd,Soldiers Grove,WI,US

#		Max Dimensions	sqft	Included
14	Hall	5'8" x 5'8"	32 sq. ft	Yes

Home report

51888 Johnstown Rd,Soldiers Grove,WI,US

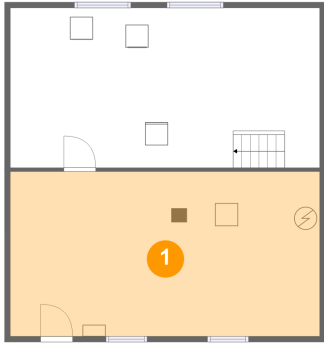


Room dimensions

Floor 3 Total sqft: 840 Living area: 840

#		Max Dimensions	sqft	Included
15	Bedroom	11'7" x 14'3"	165 sq. ft	Yes
16	Hall	15'3" x 7'5"	104 sq. ft	Yes
17	Bedroom	11'7" x 10'9"	126 sq. ft	Yes
18	Bedroom	11'8" x 10'8"	124 sq. ft	Yes
19	Bedroom	11'7" x 14'3"	165 sq. ft	Yes

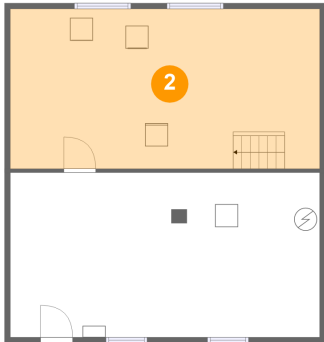
1 Floor 1 - Basement



Max Dimensions: 27'2" x 14'5"
Calculated Area: 393 sq. ft
Included: No

Heated: Yes
Finished: No
Enclosed: Yes
Contiguous: Yes
Permitted: Yes
Wet space: No
Addition: No
Conversion: No

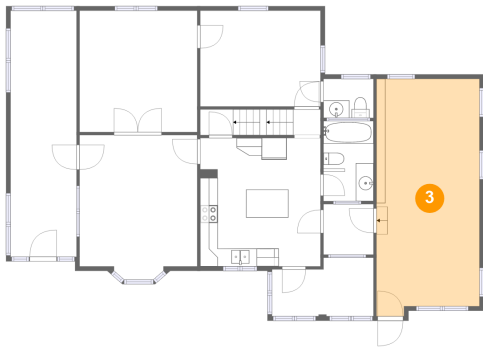
2 Floor 1 - Basement



Max Dimensions: 27'2" x 14'0"
Calculated Area: 381 sq. ft
Included: No

Heated: Yes
Finished: No
Enclosed: Yes
Contiguous: Yes
Permitted: Yes
Wet space: No
Addition: No
Conversion: No

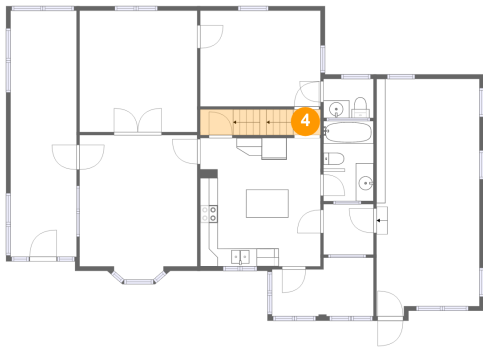
3 Floor 2 - Workshop



Max Dimensions: 11'7" x 26'9"
Calculated Area: 301 sq. ft
Included: No

Heated: No
Finished: No
Enclosed: Yes
Contiguous: Yes
Permitted: Yes
Wet space: No
Addition: No
Conversion: No

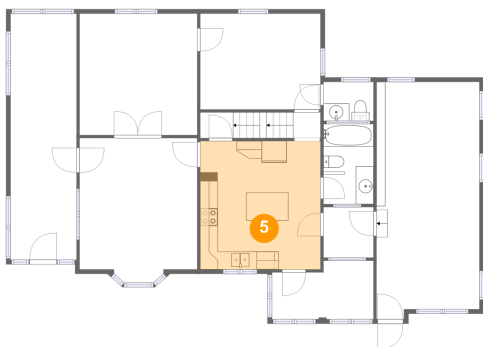
4 Floor 2 - Hall



Max Dimensions: 3'1" x 2'11"
Calculated Area: 39 sq. ft
Included: Yes

Heated: Yes
Finished: Yes
Enclosed: Yes
Contiguous: Yes
Permitted: Yes
Wet space: No
Addition: No
Conversion: No

5 Floor 2 - Kitchen



Max Dimensions: 13'7" x 14'5"
Calculated Area: 196 sq. ft
Included: Yes

Heated: Yes
Finished: Yes
Enclosed: Yes
Contiguous: Yes
Permitted: Yes
Wet space: No
Addition: No
Conversion: No

6 Floor 2 - Foyer



Max Dimensions: 7'5" x 7'1"
Calculated Area: 53 sq. ft
Included: Yes

Heated: Yes
Finished: Yes
Enclosed: Yes
Contiguous: Yes
Permitted: Yes
Wet space: No
Addition: No
Conversion: No

7 Floor 2 - Sitting Room



Max Dimensions: 7'5" x 20'8"
Calculated Area: 154 sq. ft
Included: Yes

Heated: Yes
Finished: Yes
Enclosed: Yes
Contiguous: Yes
Permitted: Yes
Wet space: No
Addition: No
Conversion: No

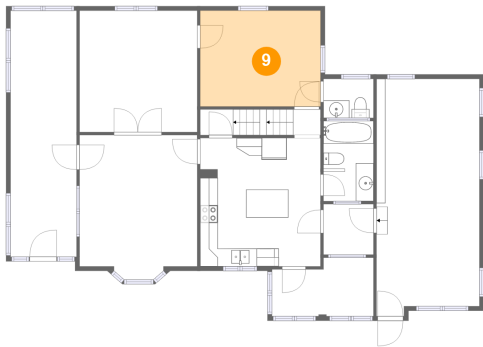
8 Floor 2 - Sunroom



Max Dimensions: 11'5" x 6'7"
Calculated Area: 68 sq. ft
Included: Yes

Heated: Yes
Finished: Yes
Enclosed: Yes
Contiguous: Yes
Permitted: Yes
Wet space: No
Addition: No
Conversion: No

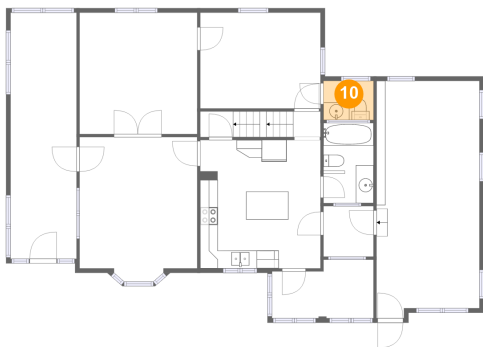
9 Floor 2 - Primary Bedroom



Max Dimensions: 13'6" x 10'10"
Calculated Area: 146 sq. ft
Included: Yes

Heated: Yes
Finished: Yes
Enclosed: Yes
Contiguous: Yes
Permitted: Yes
Wet space: No
Addition: No
Conversion: No

10 Floor 2 - WC



Max Dimensions: 5'8" x 4'4"
Calculated Area: 25 sq. ft
Included: Yes

Heated: Yes
Finished: Yes
Enclosed: Yes
Contiguous: Yes
Permitted: Yes
Wet space: Yes
Addition: No
Conversion: No

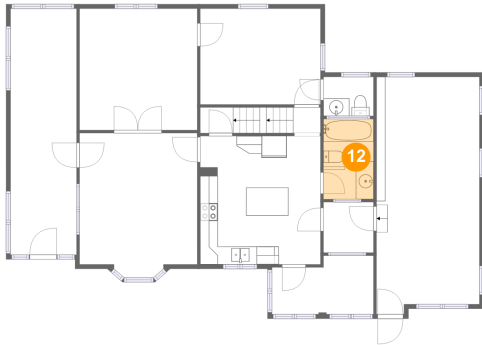
11 Floor 2 - Living Room



Max Dimensions: 13'3" x 14'10"
Calculated Area: 196 sq. ft
Included: Yes

Heated: Yes
Finished: Yes
Enclosed: Yes
Contiguous: Yes
Permitted: Yes
Wet space: No
Addition: No
Conversion: No

12 Floor 2 - Bath



Max Dimensions: 5'8" x 9'0"
Calculated Area: 51 sq. ft
Included: Yes

Heated: Yes
Finished: Yes
Enclosed: Yes
Contiguous: Yes
Permitted: Yes
Wet space: Yes
Addition: No
Conversion: No

13 Floor 2 - Dining Room



Max Dimensions: 13'3" x 13'8"
Calculated Area: 182 sq. ft
Included: Yes

Heated: Yes
Finished: Yes
Enclosed: Yes
Contiguous: Yes
Permitted: Yes
Wet space: No
Addition: No
Conversion: No

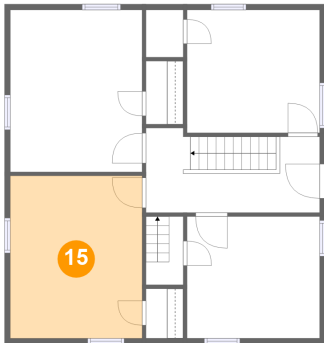
14 Floor 2 - Hall



Max Dimensions: 5'8" x 5'8"
Calculated Area: 32 sq. ft
Included: Yes

Heated: Yes
Finished: Yes
Enclosed: Yes
Contiguous: Yes
Permitted: Yes
Wet space: No
Addition: No
Conversion: No

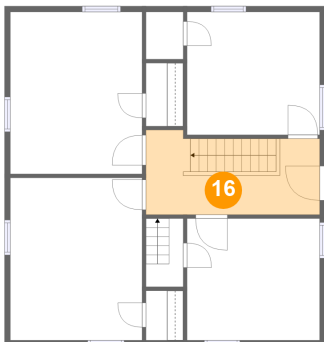
15 Floor 3 - Bedroom



Max Dimensions: 11'7" x 14'3"
Calculated Area: 165 sq. ft
Included: Yes

Heated: Yes
Finished: Yes
Enclosed: Yes
Contiguous: Yes
Permitted: Yes
Wet space: No
Addition: No
Conversion: No

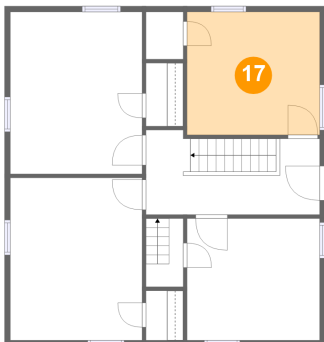
16 Floor 3 - Hall



Max Dimensions: 15'3" x 7'5"
Calculated Area: 104 sq. ft
Included: Yes

Heated: Yes
Finished: Yes
Enclosed: Yes
Contiguous: Yes
Permitted: Yes
Wet space: No
Addition: No
Conversion: No

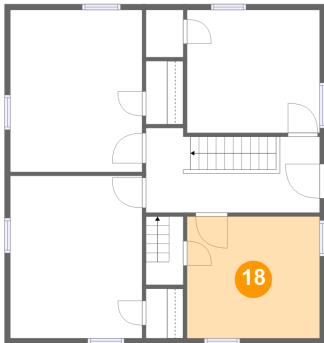
17 Floor 3 - Bedroom



Max Dimensions: 11'7" x 10'9"
Calculated Area: 126 sq. ft
Included: Yes

Heated: Yes
Finished: Yes
Enclosed: Yes
Contiguous: Yes
Permitted: Yes
Wet space: No
Addition: No
Conversion: No

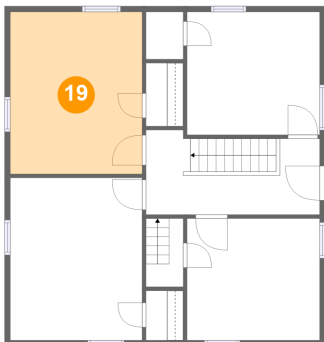
18 Floor 3 - Bedroom



Max Dimensions: 11'8" x 10'8"
Calculated Area: 124 sq. ft
Included: Yes

Heated: Yes
Finished: Yes
Enclosed: Yes
Contiguous: Yes
Permitted: Yes
Wet space: No
Addition: No
Conversion: No

19 Floor 3 - Bedroom



Max Dimensions: 11'7" x 14'3"
Calculated Area: 165 sq. ft
Included: Yes

Heated: Yes
Finished: Yes
Enclosed: Yes
Contiguous: Yes
Permitted: Yes
Wet space: No
Addition: No
Conversion: No