

# 3719 Skye Place

Port Coquitlam V3B 3B1

Total Area 1,452 SQ.FT.

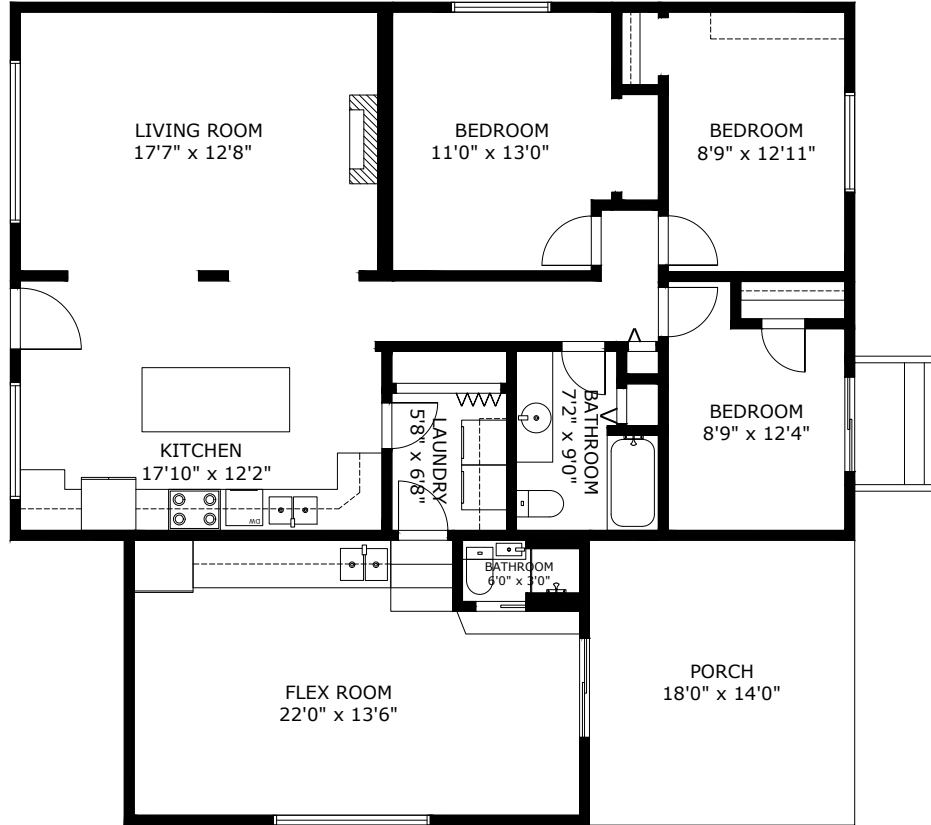
Balcony Area: 252 SQ.FT.

Ceiling Height: 8'0"-9'0"

3  
BEDROOMS

2  
BATHROOMS

1,452  
TOTAL SQ.FT.



604.837.8686 | email: christinetossa@gmail.com



Professionally measured by: 3D Immersive Marketing Ltd.  
Lead Floor Planner: *Sara Alexander*  
Quality Assurance: *Dianne Graham*

Measurements are approximate and may not be to scale.  
The floor plan illustration is not suitable for construction/architectural purposes.

3719 Skye Place Port COQUITLAM BC V3B 3B1