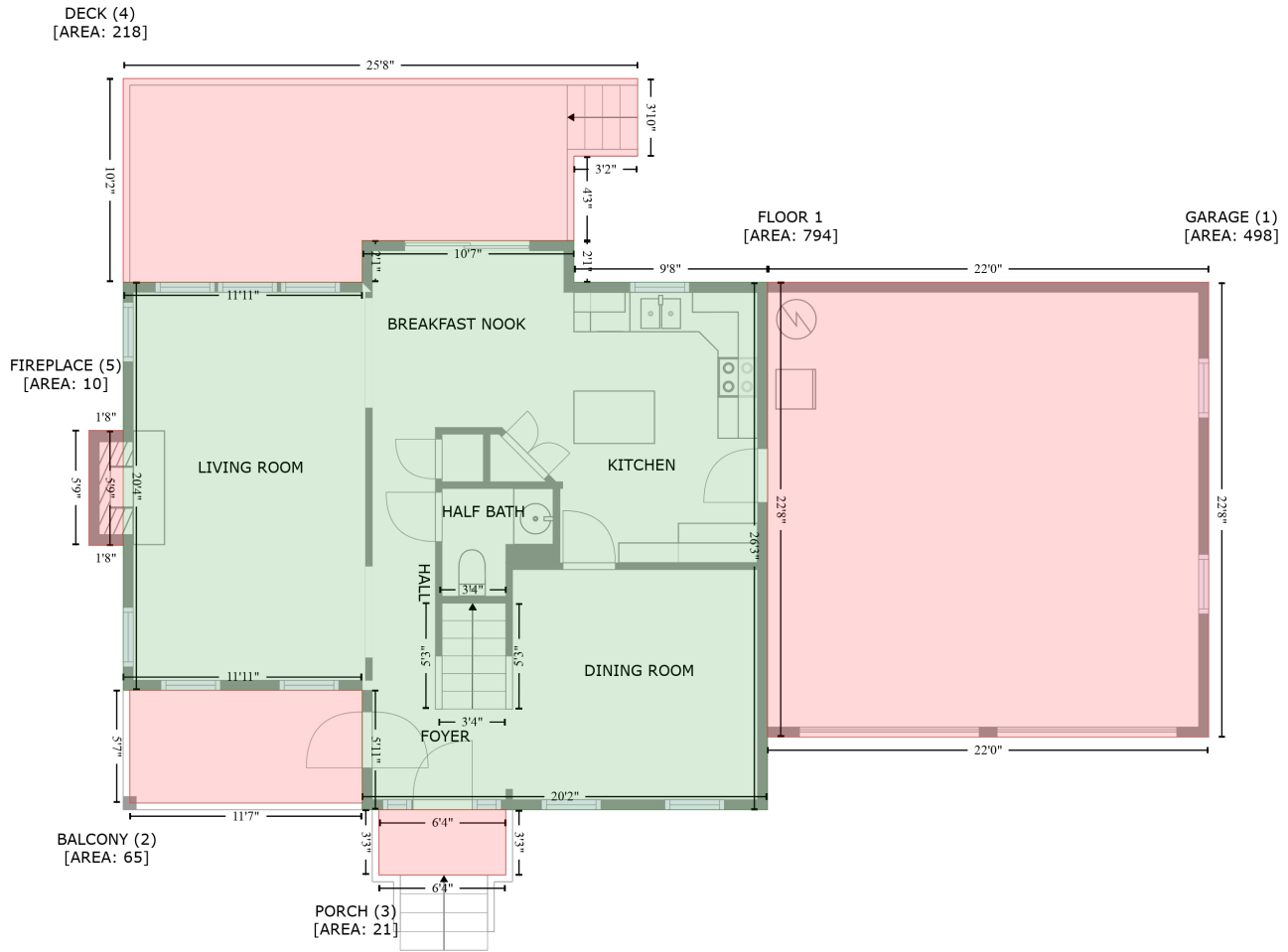


102 Parkmeadow Drive, Cary, Wake County, North Carolina, United States, 27519

Gross Living Area: 2465 sq. ft



Space	Area (sq. ft)	Calculation <small>Coordinate Polygon Area Algorithm using inches</small>
FLOOR 1 (Living area)	794	$-\left((366.2 + 366.2) * (205 - 229.8) + (366.2 + 482) * (229.8 - 229.8) + (482 + 482) * (229.8 - 545.1) + (482 + 239.7) * (545.1 - 545.1) + (239.7 + 239.7) * (545.1 - 473.7) + (239.7 + 96.8) * (473.7 - 473.7) + (96.8 + 96.8) * (473.7 - 229.8) + (96.8 + 239.7) * (229.8 - 229.8) + (239.7 + 239.7) * (229.8 - 205) + (239.7 + 366.2) * (205 - 205)\right) * 0.5 * 0.00694$
GARAGE (Non-living area)	498	$-\left((745.7 + 745.7) * (229.8 - 501.7) + (745.7 + 482) * (501.7 - 501.7) + (482 + 482) * (501.7 - 229.8) + (482 + 745.7) * (229.8 - 229.8)\right) * 0.5 * 0.00694$
BALCONY (Non-living area)	65	$-\left((239.7 + 239.7) * (473.7 - 541.1) + (239.7 + 100.8) * (541.1 - 541.1) + (100.8 + 100.8) * (541.1 - 473.7) + (100.8 + 239.7) * (473.7 - 473.7)\right) * 0.5 * 0.00694$
PORCH (Non-living area)	21	$-\left((325.5 + 325.5) * (545.1 - 584.1) + (325.5 + 249.7) * (584.1 - 584.1) + (249.7 + 249.7) * (584.1 - 545.1) + (249.7 + 325.5) * (545.1 - 545.1)\right) * 0.5 * 0.00694$
DECK (Non-living area)	218	$-\left((404.3 + 404.3) * (108.1 - 154.5) + (404.3 + 366.2) * (154.5 - 154.5) + (366.2 + 366.2) * (154.5 - 205) + (366.2 + 239.7) * (205 - 205) + (239.7 + 239.7) * (205 - 229.8) + (239.7 + 96.8) * (229.8 - 229.8) + (96.8 + 96.8) * (229.8 - 108.1) + (96.8 + 404.3) * (108.1 - 108.1)\right) * 0.5 * 0.00694$
FIREPLACE	10	$-\left((96.8 + 96.8) * (318.4 - 387.1) + (96.8 + 76.3) * (387.1 - 387.1) + (76.3 + 76.3) * (387.1 - 318.4)\right)$

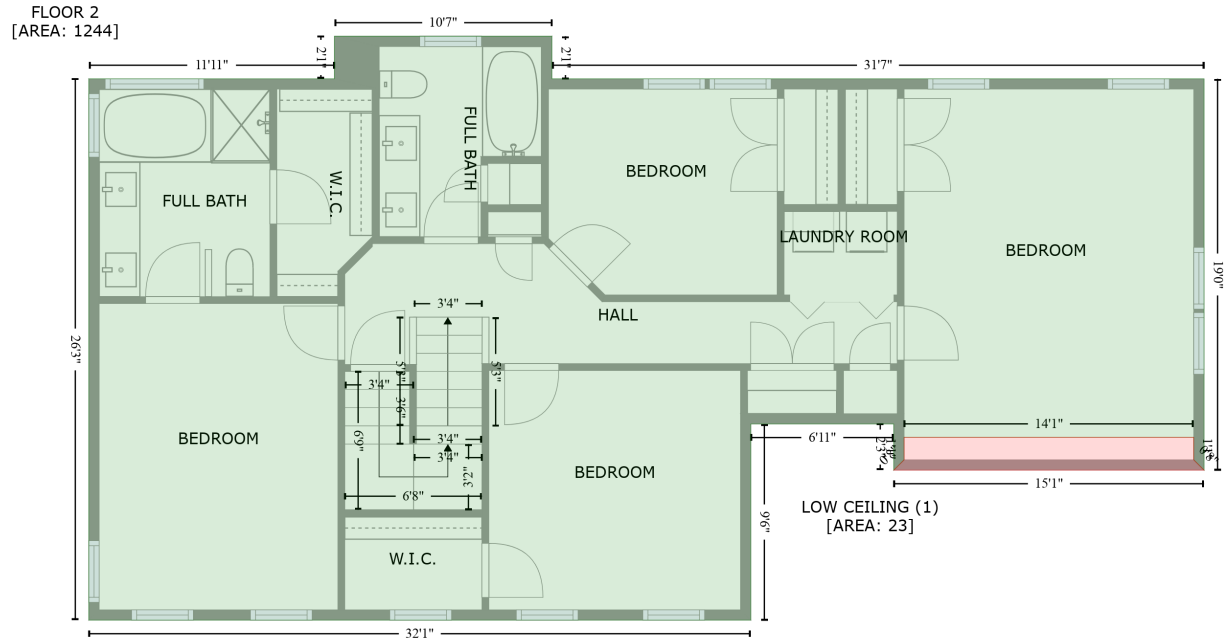
102 Parkmeadow Drive, Cary, Wake County, North Carolina, United States, 27519

Gross Living Area: 2465 sq. ft

Space	Area (sq. ft)	Calculation <small>Coordinate Polygon Area Algorithm using inches</small>
(Non-living area)		$+ (76.3 + 96.8) * (318.4 - 318.4) * 0.5 * 0.00694$

102 Parkmeadow Drive, Cary, Wake County, North Carolina, United States, 27519

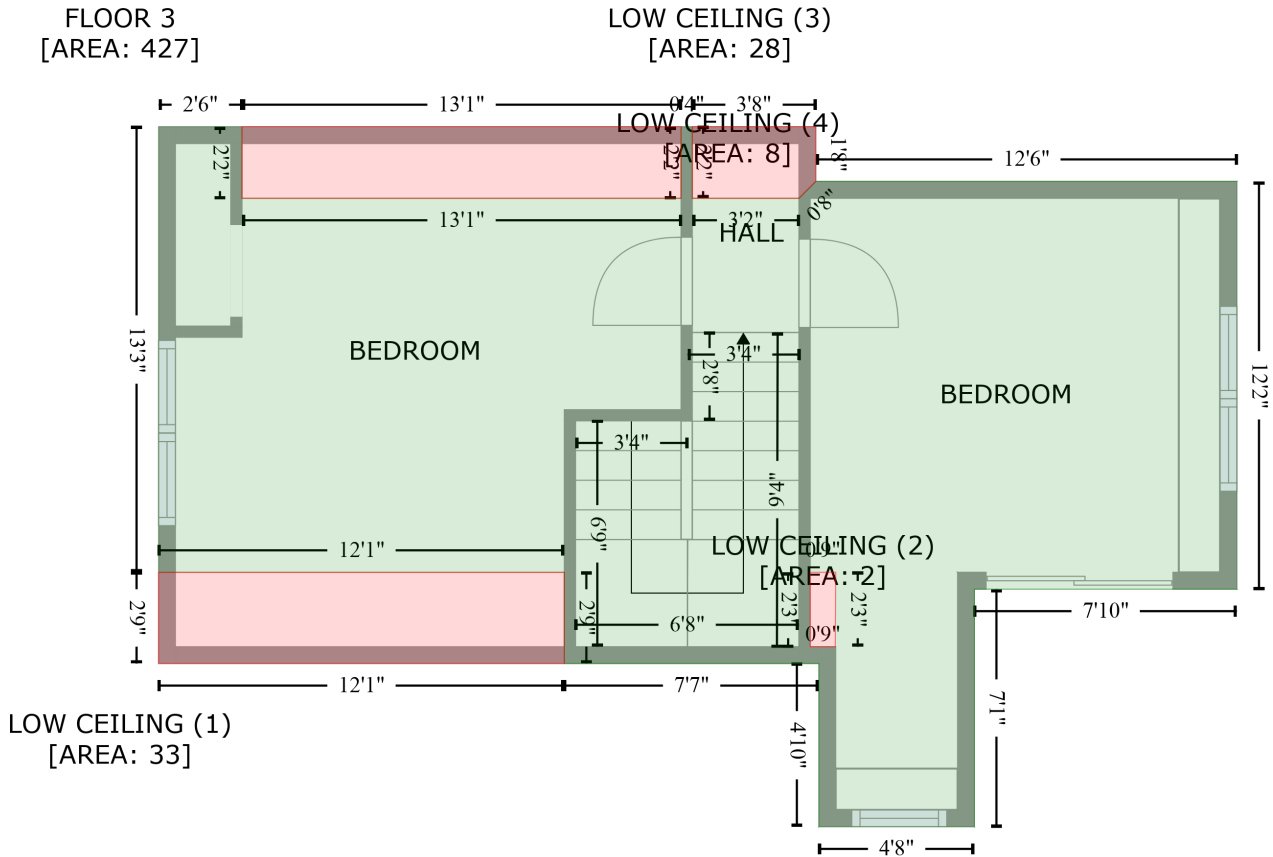
Gross Living Area: 2465 sq. ft



Space	Area (sq. ft)	Calculation <small>Coordinate Polygon Area Algorithm using inches</small>
FLOOR 2 (Living area)	1244	$ \begin{aligned} & -((366.2 + 366.2) * (205 - 229.8) + (366.2 + 745.7) * (229.8 - 229.8) + (745.7 + 745.7) * (229.8 - \\ & 457.8) + (745.7 + 739.7) * (457.8 - 451.8) + (739.7 + 739.7) * (451.8 - 438.7) + (739.7 + 571.2) * \\ & (438.7 - 438.7) + (571.2 + 571.2) * (438.7 - 451.8) + (571.2 + 565.2) * (451.8 - 457.8) + (565.2 + \\ & 565.2) * (457.8 - 430.9) + (565.2 + 482) * (430.9 - 430.9) + (482 + 482) * (430.9 - 545.1) + (482 + \\ & 96.8) * (545.1 - 545.1) + (96.8 + 96.8) * (545.1 - 229.8) + (96.8 + 239.7) * (229.8 - 229.8) + (239.7 \\ & + 239.7) * (229.8 - 205) + (239.7 + 366.2) * (205 - 205)) * 0.5 * 0.00694 \end{aligned} $
LOW CEILING (Non-living area)	23	$ \begin{aligned} & -((739.7 + 739.7) * (438.7 - 451.8) + (739.7 + 745.7) * (451.8 - 457.8) + (745.7 + 565.2) * (457.8 - \\ & 457.8) + (565.2 + 571.2) * (457.8 - 451.8) + (571.2 + 571.2) * (451.8 - 438.7) + (571.2 + 739.7) * \\ & (438.7 - 438.7)) * 0.5 * 0.00694 \end{aligned} $

102 Parkmeadow Drive, Cary, Wake County, North Carolina, United States, 27519

Gross Living Area: 2465 sq. ft



Space	Area (sq. ft)	Calculation <small>Coordinate Polygon Area Algorithm using inches</small>
FLOOR 3 (Living area)	427	$-((126.5 + 126.5) * (295.2 - 320.7) + (126.5 + 283.4) * (320.7 - 320.7) + (283.4 + 283.4) * (320.7 - 295.2) + (283.4 + 287.4) * (295.2 - 295.2) + (287.4 + 287.4) * (295.2 - 320.7) + (287.4 + 325.5) * (320.7 - 320.7) + (325.5 + 331.5) * (320.7 - 314.7) + (331.5 + 482) * (314.7 - 314.7) + (482 + 482) * (314.7 - 460.3) + (482 + 388.2) * (460.3 - 460.3) + (388.2 + 388.2) * (460.3 - 545.1) + (388.2 + 332.6) * (545.1 - 545.1) + (332.6 + 332.6) * (545.1 - 486.8) + (332.6 + 241.7) * (486.8 - 486.8) + (241.7 + 241.7) * (486.8 - 454.3) + (241.7 + 96.8) * (454.3 - 454.3) + (96.8 + 96.8) * (454.3 - 295.2) + (96.8 + 126.5) * (295.2 - 295.2) * 0.5 * 0.00694 - ((338.6 + 329.5) * (454.3 - 454.3) + (329.5 + 329.5) * (454.3 - 480.8) + (329.5 + 338.6) * (480.8 - 480.8) + (338.6 + 338.6) * (480.8 - 454.3)) * 0.5 * 0.00694$
LOW CEILING (Non-living area)	33	$-((241.7 + 241.7) * (454.3 - 486.8) + (241.7 + 96.8) * (486.8 - 486.8) + (96.8 + 96.8) * (486.8 - 454.3) + (96.8 + 241.7) * (454.3 - 454.3)) * 0.5 * 0.00694$
LOW CEILING (Non-living area)	2	$-((338.6 + 338.6) * (454.3 - 480.8) + (338.5 + 329.5) * (480.8 - 480.8) + (329.5 + 329.5) * (480.8 - 454.3) + (329.5 + 338.6) * (454.3 - 454.3)) * 0.5 * 0.00694$
LOW CEILING (Non-living area)	28	$-((283.4 + 283.4) * (295.2 - 320.7) + (283.4 + 126.5) * (320.7 - 320.7) + (126.5 + 126.5) * (320.7 - 295.2) + (126.5 + 283.4) * (295.2 - 295.2)) * 0.5 * 0.00694$
LOW CEILING (Non-living area)	8	$-((331.5 + 331.5) * (295.2 - 314.7) + (331.5 + 325.5) * (314.7 - 320.7) + (325.5 + 287.4) * (320.7 - 320.7) + (287.4 + 287.4) * (320.7 - 295.2) + (287.4 + 331.5) * (295.2 - 295.2)) * 0.5 * 0.00694$