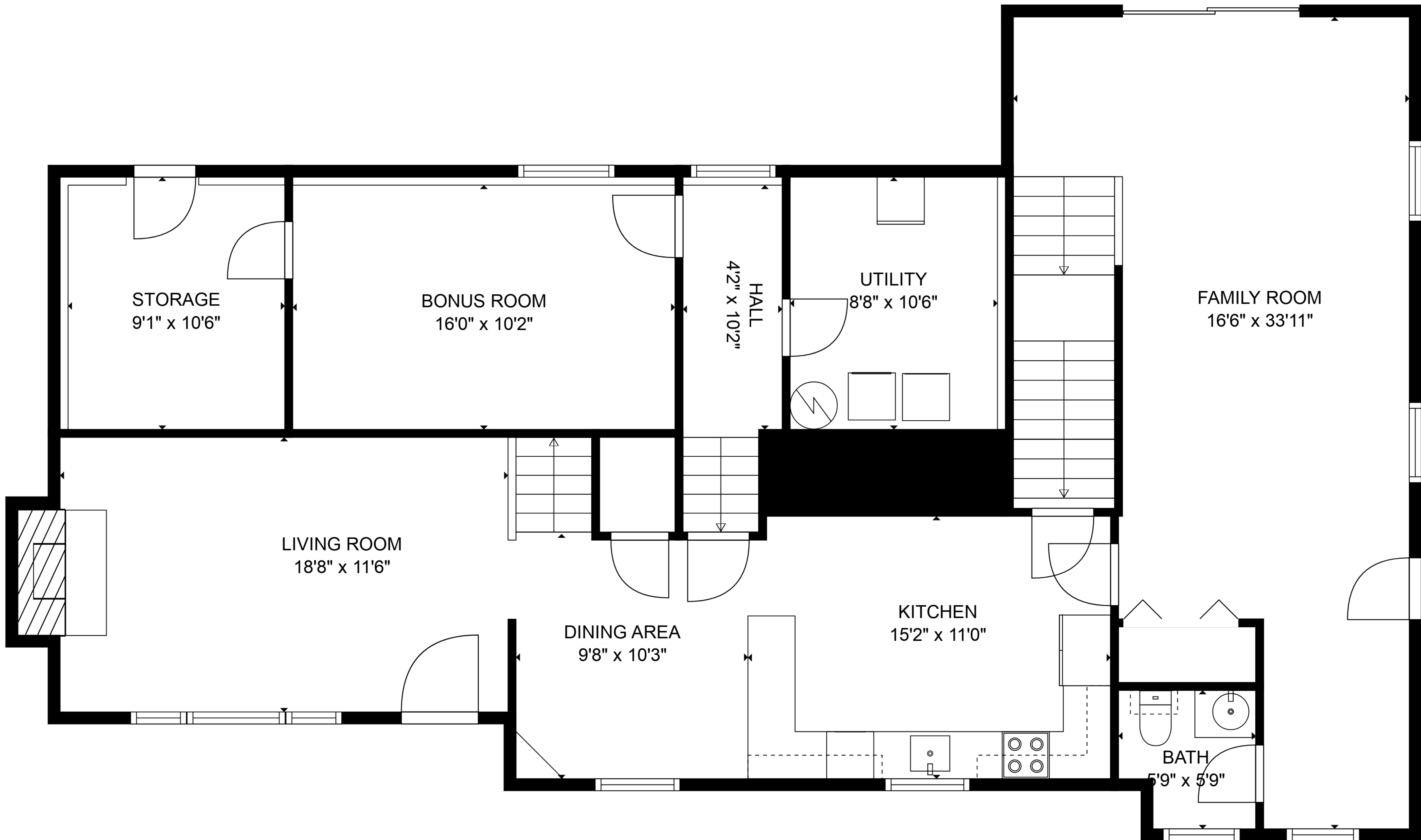


BASEMENT
16'6" x 33'11"

TOTAL: 2559 sq. ft

BELOW GROUND: 0 sq. ft, FLOOR 2: 1401 sq. ft, FLOOR 3: 1158 sq. ft
EXCLUDED AREAS: BASEMENT: 501 sq. ft, STORAGE: 99 sq. ft, FIREPLACE: 11 sq. ft,
OPEN TO BELOW: 215 sq. ft

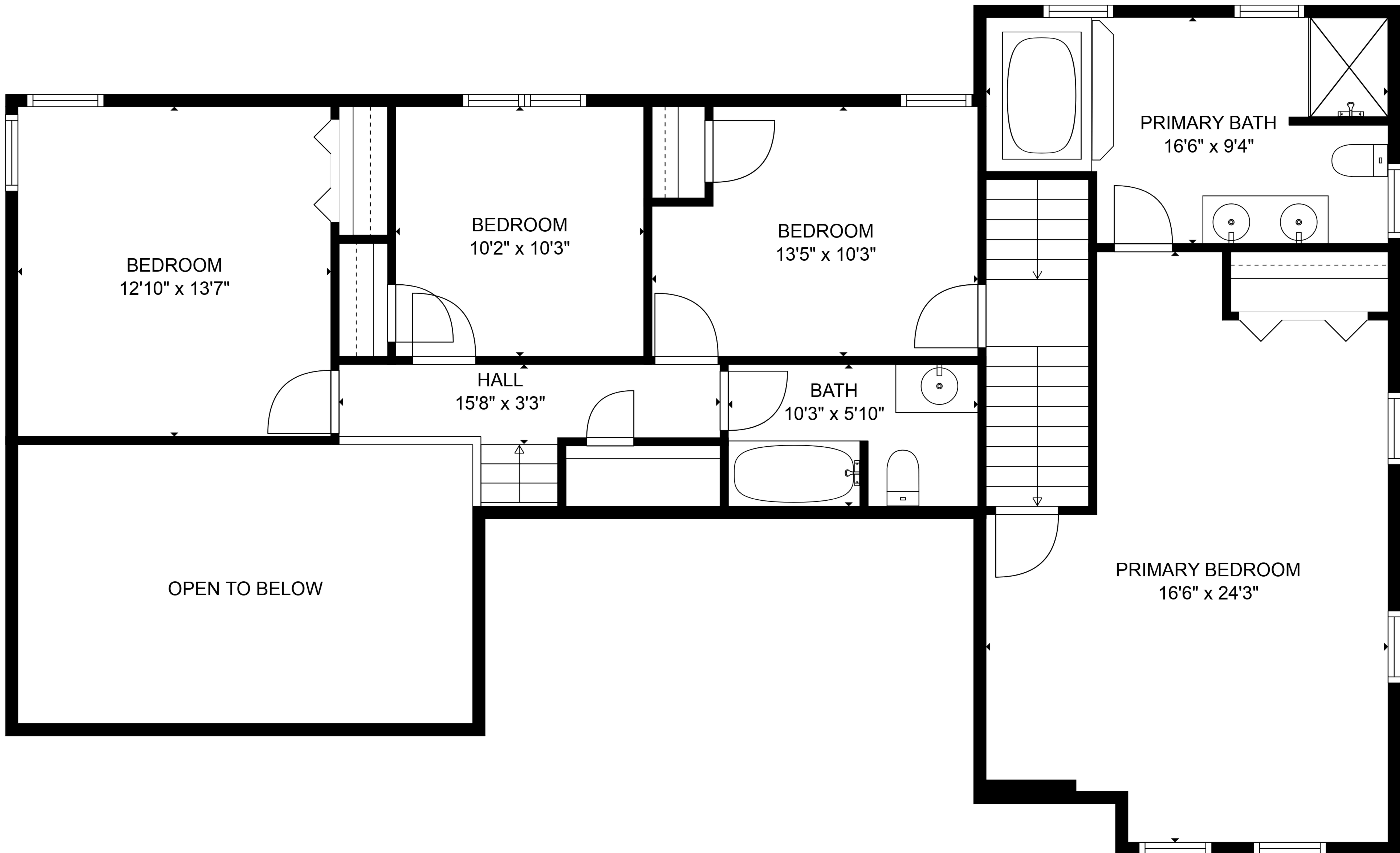


TOTAL: 2559 sq. ft

BELOW GROUND: 0 sq. ft, FLOOR 2: 1401 sq. ft, FLOOR 3: 1158 sq. ft
 EXCLUDED AREAS: BASEMENT: 501 sq. ft, STORAGE: 99 sq. ft, FIREPLACE: 11 sq. ft,
 OPEN TO BELOW: 215 sq. ft



Floor Plans are provided by HouseSnappers.com. Measurements are deemed highly reliable but not guaranteed.

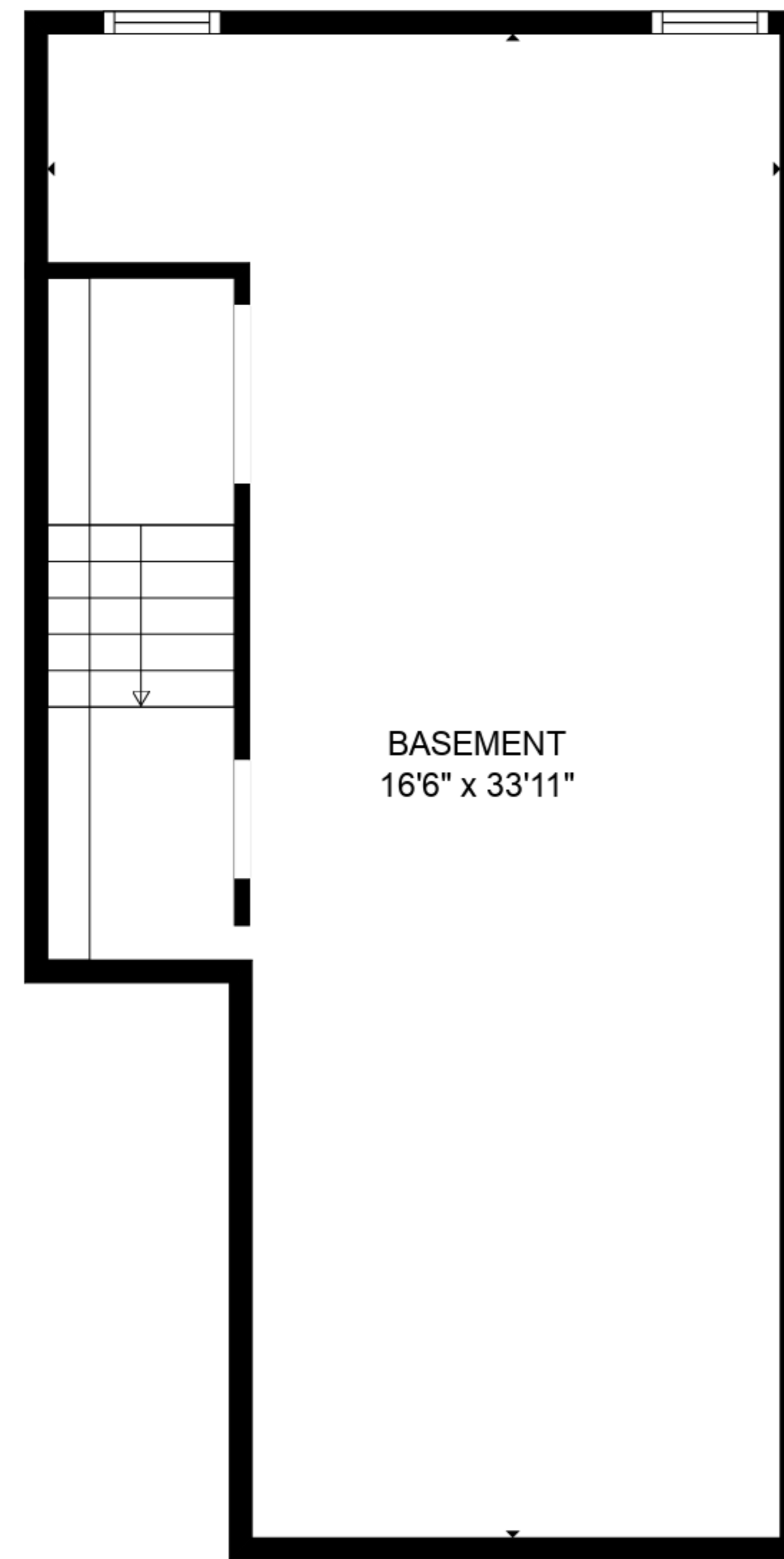
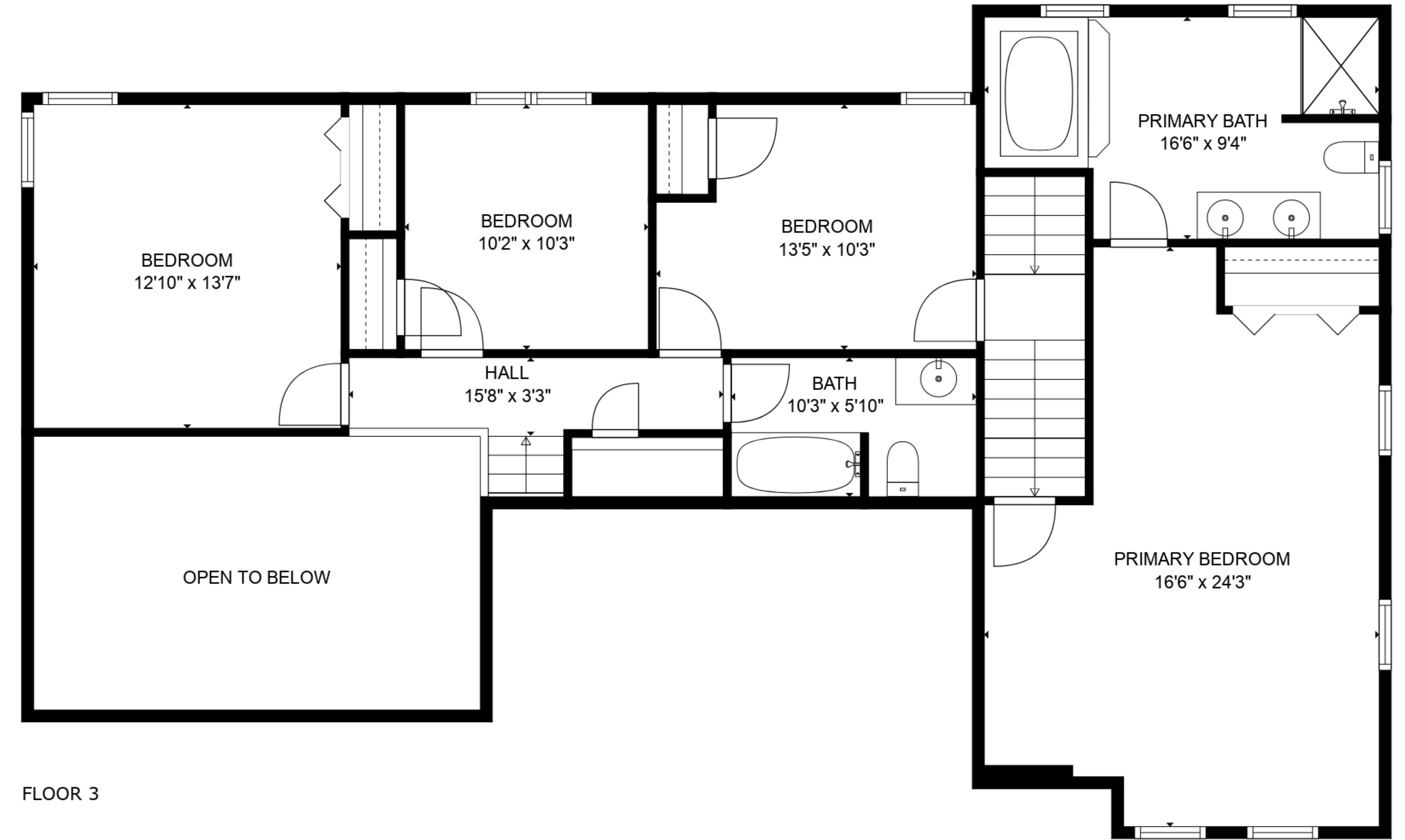
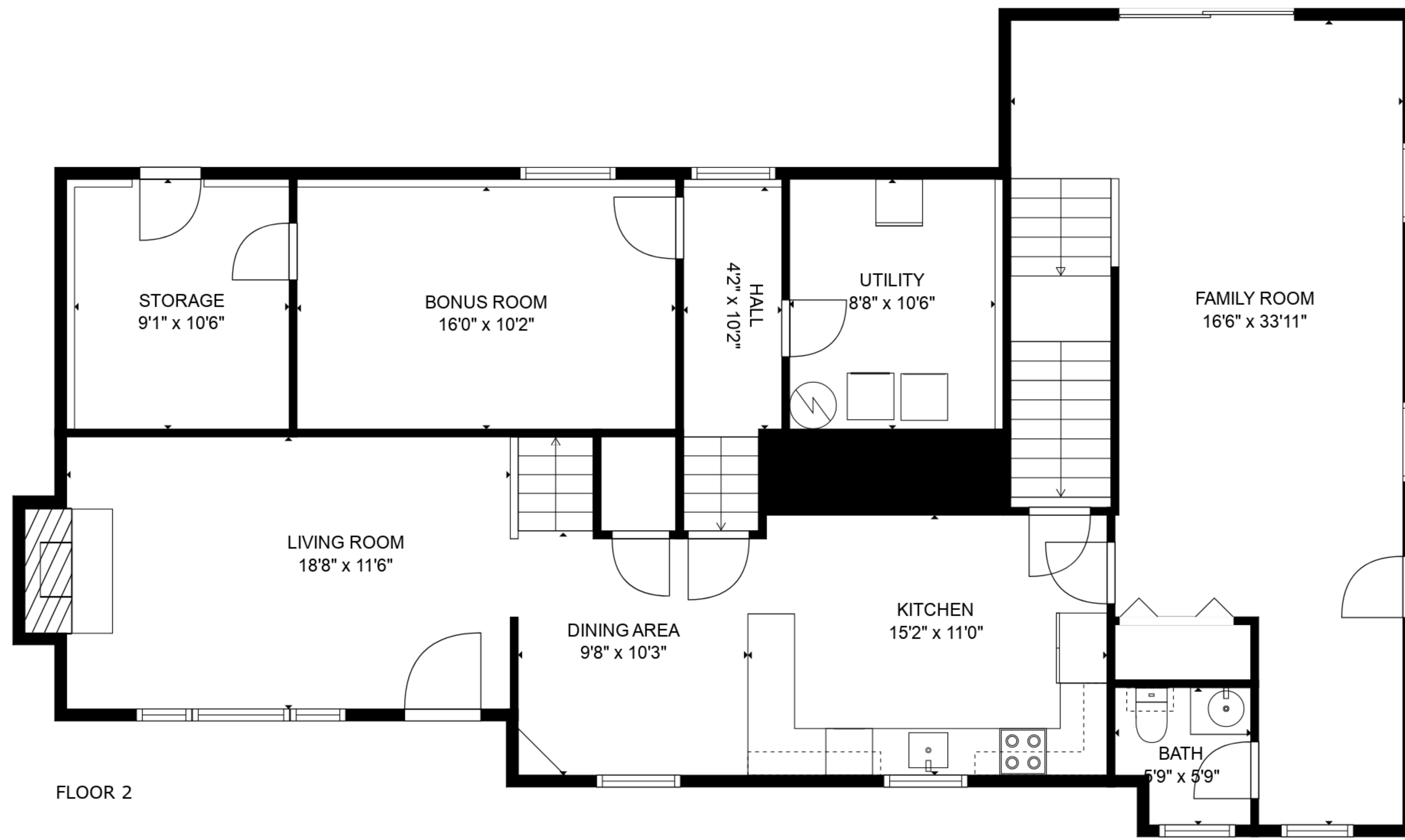


TOTAL: 2559 sq. ft

BELOW GROUND: 0 sq. ft, FLOOR 2: 1401 sq. ft, FLOOR 3: 1158 sq. ft
 EXCLUDED AREAS: BASEMENT: 501 sq. ft, STORAGE: 99 sq. ft, FIREPLACE: 11 sq. ft,
 OPEN TO BELOW: 215 sq. ft



Floor Plans are provided by HouseSnappers.com. Measurements are deemed highly reliable but not guaranteed.



FLOOR 1

TOTAL: 2559 sq. ft

BELOW GROUND: 0 sq. ft, FLOOR 2: 1401 sq. ft, FLOOR 3: 1158 sq. ft
 EXCLUDED AREAS: BASEMENT: 501 sq. ft, STORAGE: 99 sq. ft, FIREPLACE: 11 sq. ft,
 OPEN TO BELOW: 215 sq. ft

