

Home report

620 South Annandale Drive, Lake in the Hills, McHenry County,
Illinois, United States, 60156



Total GLA: 1501 sq. ft
Floor 1: 904 sq. ft, Floor 2: 597 sq. ft
Excluded: Garage 402 sq. ft, Patio 250 sq. ft

Property summary

 **2** Floors

 **2** Bedrooms

 **2** Bathrooms

Home report

**620 South Annandale Drive, Lake in the Hills, McHenry County,
Illinois, United States, 60156**



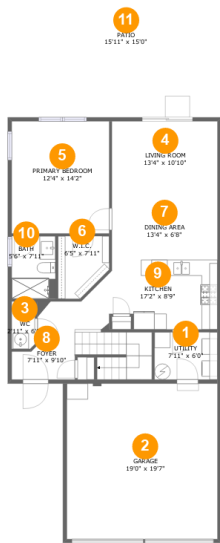
1
Half baths



1
Garages

Home report

620 South Annandale Drive, Lake in the Hills, McHenry County,
Illinois, United States, 60156



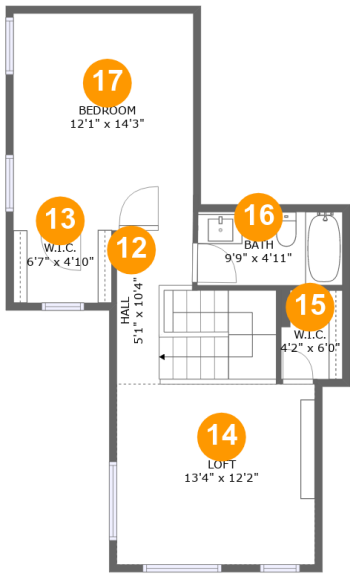
Room dimensions

Floor 1 Total:904sqft Excluded: 652sqft

#		Max Dimensions	sqft	Included
1	Utility	7'11" x 6'0"	47 sq. ft	Yes
2	Garage	19'0" x 19'7"	372 sq. ft	No
3	WC	2'11" x 6'0"	17 sq. ft	Yes
4	Living Room	13'4" x 10'10"	144 sq. ft	Yes
5	Primary Bedroom	12'4" x 14'2"	174 sq. ft	Yes
6	W.I.C.	6'5" x 7'11"	44 sq. ft	Yes
7	Dining Area	13'4" x 6'8"	89 sq. ft	Yes
8	Foyer	7'11" x 9'10"	110 sq. ft	Yes
9	Kitchen	17'2" x 8'9"	133 sq. ft	Yes
10	Bath	5'6" x 7'11"	44 sq. ft	Yes
11	Patio	15'11" x 15'0"	250 sq. ft	No

Home report

620 South Annandale Drive, Lake in the Hills, McHenry County, Illinois, United States, 60156



Room dimensions

Floor 2 Total:597sqft Excluded: 0sqft

#		Max Dimensions	sqft	Included
12	Hall	5'1" x 10'4"	88 sq. ft	Yes
13	W.I.C.	6'7" x 4'10"	32 sq. ft	Yes
14	Loft	13'4" x 12'2"	162 sq. ft	Yes
15	W.I.C.	4'2" x 6'0"	25 sq. ft	Yes
16	Bath	9'9" x 4'11"	48 sq. ft	Yes
17	Bedroom	12'1" x 14'3"	173 sq. ft	Yes

1 Floor 1 - Utility



Max Dimensions: 7'11" x 6'0"
Calculated Area: 47 sq. ft
Included: Yes

Heated: Yes
Finished: Yes
Enclosed: Yes
Contiguous: Yes
Permitted: Yes
Wet space: No
Addition: No
Conversion: No

2 Floor 1 - Garage



Max Dimensions: 19'0" x 19'7"
Calculated Area: 372 sq. ft
Included: No

Heated: No
Finished: No
Enclosed: Yes
Contiguous: Yes
Permitted: Yes
Wet space: No
Addition: No
Conversion: No

3 Floor 1 - WC



Max Dimensions: 2'11" x 6'0"
Calculated Area: 17 sq. ft
Included: Yes

Heated: Yes
Finished: Yes
Enclosed: Yes
Contiguous: Yes
Permitted: Yes
Wet space: Yes
Addition: No
Conversion: No

4 Floor 1 - Living Room



Max Dimensions: 13'4" x 10'10"
Calculated Area: 144 sq. ft
Included: Yes

Heated: Yes
Finished: Yes
Enclosed: Yes
Contiguous: Yes
Permitted: Yes
Wet space: No
Addition: No
Conversion: No

5 Floor 1 - Primary Bedroom



Max Dimensions: 12'4" x 14'2"
Calculated Area: 174 sq. ft
Included: Yes

Heated: Yes
Finished: Yes
Enclosed: Yes
Contiguous: Yes
Permitted: Yes
Wet space: No
Addition: No
Conversion: No

6 Floor 1 - W.I.C.



Max Dimensions: 6'5" x 7'11"
Calculated Area: 44 sq. ft
Included: Yes

Heated: Yes
Finished: Yes
Enclosed: Yes
Contiguous: Yes
Permitted: Yes
Wet space: No
Addition: No
Conversion: No

7 Floor 1 - Dining Area



Max Dimensions: 13'4" x 6'8"
Calculated Area: 89 sq. ft
Included: Yes

Heated: Yes
Finished: Yes
Enclosed: Yes
Contiguous: Yes
Permitted: Yes
Wet space: No
Addition: No
Conversion: No

8 Floor 1 - Foyer



Max Dimensions: 7'11" x 9'10"
Calculated Area: 110 sq. ft
Included: Yes

Heated: Yes
Finished: Yes
Enclosed: Yes
Contiguous: Yes
Permitted: Yes
Wet space: No
Addition: No
Conversion: No

9 Floor 1 - Kitchen



Max Dimensions: 17'2" x 8'9"
Calculated Area: 133 sq. ft
Included: Yes

Heated: Yes
Finished: Yes
Enclosed: Yes
Contiguous: Yes
Permitted: Yes
Wet space: No
Addition: No
Conversion: No

10 Floor 1 - Bath



Max Dimensions: 5'6" x 7'11"
Calculated Area: 44 sq. ft
Included: Yes

Heated: Yes
Finished: Yes
Enclosed: Yes
Contiguous: Yes
Permitted: Yes
Wet space: Yes
Addition: No
Conversion: No

11 Floor 1 - Patio



Max Dimensions: 15'11" x 15'0"
Calculated Area: 250 sq. ft
Included: No

Heated: No
Finished: Yes
Enclosed: No
Contiguous: Yes
Permitted: Yes
Wet space: No
Addition: No
Conversion: No

620 South Annandale Drive, Lake in the Hills, McHenry County,
Illinois, United States, 60156

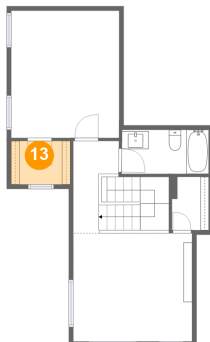
12 Floor 2 - Hall



Max Dimensions: 5'1" x 10'4"
Calculated Area: 88 sq. ft
Included: Yes

Heated: Yes
Finished: Yes
Enclosed: Yes
Contiguous: Yes
Permitted: Yes
Wet space: No
Addition: No
Conversion: No

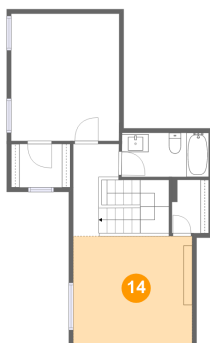
13 Floor 2 - W.I.C.



Max Dimensions: 6'7" x 4'10"
Calculated Area: 32 sq. ft
Included: Yes

Heated: Yes
Finished: Yes
Enclosed: Yes
Contiguous: Yes
Permitted: Yes
Wet space: No
Addition: No
Conversion: No

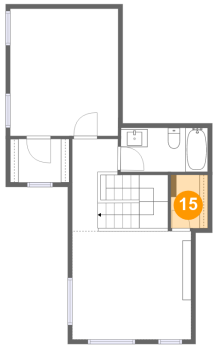
14 Floor 2 - Loft



Max Dimensions: 13'4" x 12'2"
Calculated Area: 162 sq. ft
Included: Yes

Heated: Yes
Finished: Yes
Enclosed: Yes
Contiguous: Yes
Permitted: Yes
Wet space: No
Addition: No
Conversion: No

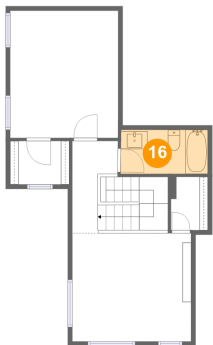
15 Floor 2 - W.I.C.



Max Dimensions: 4'2" x 6'0"
Calculated Area: 25 sq. ft
Included: Yes

Heated: Yes
Finished: Yes
Enclosed: Yes
Contiguous: Yes
Permitted: Yes
Wet space: No
Addition: No
Conversion: No

16 Floor 2 - Bath



Max Dimensions: 9'9" x 4'11"
Calculated Area: 48 sq. ft
Included: Yes

Heated: Yes
Finished: Yes
Enclosed: Yes
Contiguous: Yes
Permitted: Yes
Wet space: Yes
Addition: No
Conversion: No

17 Floor 2 - Bedroom



Max Dimensions: 12'1" x 14'3"
Calculated Area: 173 sq. ft
Included: Yes

Heated: Yes
Finished: Yes
Enclosed: Yes
Contiguous: Yes
Permitted: Yes
Wet space: No
Addition: No
Conversion: No