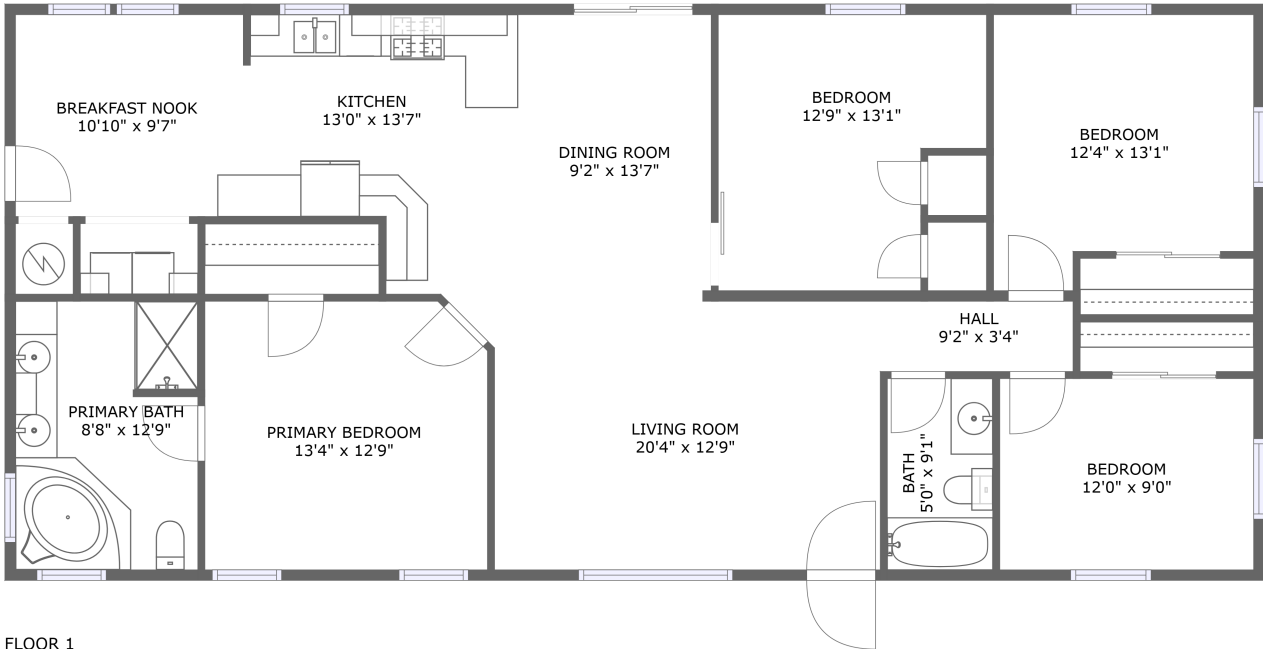


133 Pine Cone Drive, Bayfield, Colorado 81122, United States



Property Summary

 **0** garages

 **4** bedrooms

 **2** bathrooms

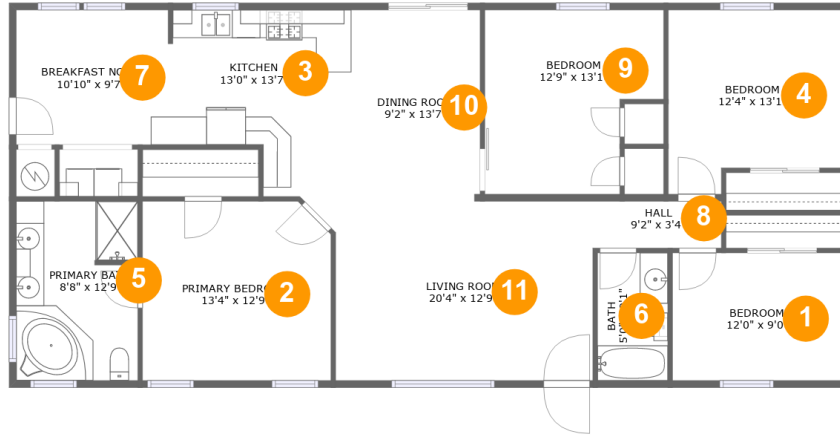
 **0** half baths

 **1** floors

 **1,631** Gross Living Area sqft

 **1,631** total sqft

133 Pine Cone Drive, Bayfield, Colorado 81122, United States



Room Dimensions

Floor 1

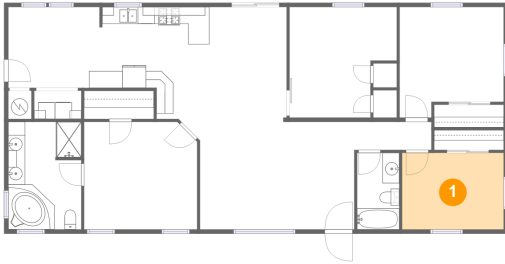
Total sqft: 1631

Living area: 1631

#	Room name	Dimensions	Area (sqft)	Counted as Living Area
1	Bedroom	12'0" x 9'0"	109 sq. ft	Yes
2	Primary Bedroom	13'4" x 12'9"	168 sq. ft	Yes
3	Kitchen	13'0" x 13'7"	148 sq. ft	Yes
4	Bedroom	12'4" x 13'1"	145 sq. ft	Yes
5	Primary Bath	8'8" x 12'9"	109 sq. ft	Yes
6	Bath	5'0" x 9'1"	45 sq. ft	Yes
7	Breakfast Nook	10'10" x 9'7"	103 sq. ft	Yes
8	Hall	9'2" x 3'4"	30 sq. ft	Yes
9	Bedroom	12'9" x 13'1"	145 sq. ft	Yes
10	Dining Room	9'2" x 13'7"	124 sq. ft	Yes
11	Living Room	20'4" x 12'9"	235 sq. ft	Yes

133 Pine Cone Drive, Bayfield, Colorado 81122, United States

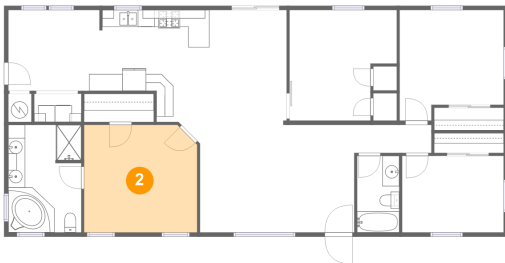
1 Floor 1 - Bedroom



Dimensions: 12'0" x 9'0"
Area: 109 sq. ft
Counted as Living Area:
Yes

Heated: Yes
Finished: Yes
Enclosed: Yes
Contiguous:
Yes
Permitted: Yes
Wet Space: No
Addition: No
Conversion: No

2 Floor 1 - Primary Bedroom

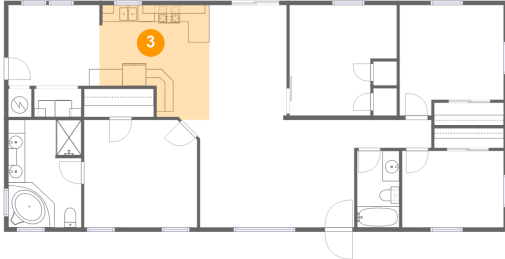


Dimensions: 13'4" x 12'9"
Area: 168 sq. ft
Counted as Living Area:
Yes

Heated: Yes
Finished: Yes
Enclosed: Yes
Contiguous:
Yes
Permitted: Yes
Wet Space: No
Addition: No
Conversion: No

133 Pine Cone Drive, Bayfield, Colorado 81122, United States

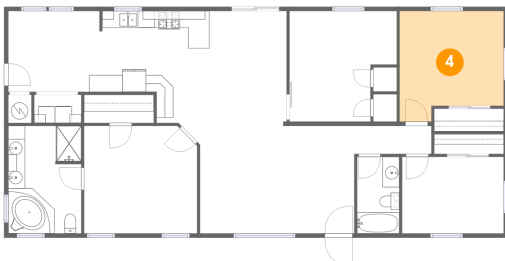
3 Floor 1 - Kitchen



Dimensions: 13'0" x 13'7"
Area: 148 sq. ft
Counted as Living Area:
Yes

Heated: Yes
Finished: Yes
Enclosed: Yes
Contiguous:
Yes
Permitted: Yes
Wet Space: No
Addition: No
Conversion: No

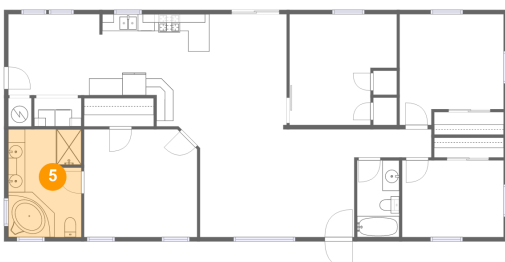
4 Floor 1 - Bedroom



Dimensions: 12'4" x 13'1"
Area: 145 sq. ft
Counted as Living Area:
Yes

Heated: Yes
Finished: Yes
Enclosed: Yes
Contiguous:
Yes
Permitted: Yes
Wet Space: No
Addition: No
Conversion: No

5 Floor 1 - Primary Bath

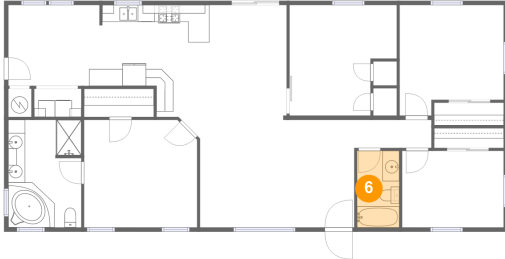


Dimensions: 8'8" x 12'9"
Area: 109 sq. ft
Counted as Living Area:
Yes

Heated: Yes
Finished: Yes
Enclosed: Yes
Contiguous:
Yes
Permitted: Yes
Wet Space: Yes
Addition: No
Conversion: No

133 Pine Cone Drive, Bayfield, Colorado 81122, United States

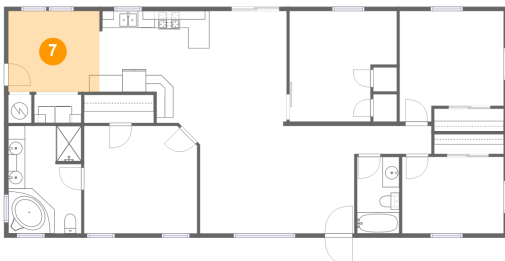
6 Floor 1 - Bath



Dimensions: 5'0" x 9'1"
Area: 45 sq. ft
Counted as Living Area:
Yes

Heated: Yes
Finished: Yes
Enclosed: Yes
Contiguous:
Yes
Permitted: Yes
Wet Space: Yes
Addition: No
Conversion: No

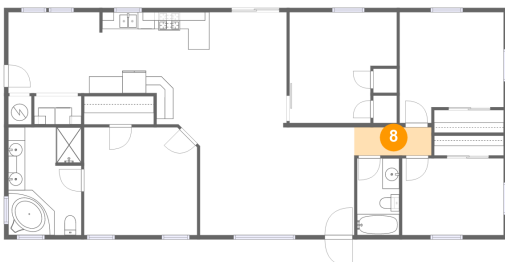
7 Floor 1 - Breakfast Nook



Dimensions: 10'10" x 9'7"
Area: 103 sq. ft
Counted as Living Area:
Yes

Heated: Yes
Finished: Yes
Enclosed: Yes
Contiguous:
Yes
Permitted: Yes
Wet Space: No
Addition: No
Conversion: No

8 Floor 1 - Hall

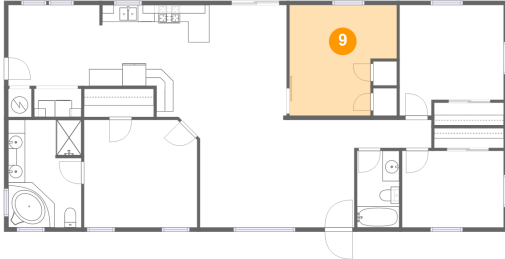


Dimensions: 9'2" x 3'4"
Area: 30 sq. ft
Counted as Living Area:
Yes

Heated: Yes
Finished: Yes
Enclosed: Yes
Contiguous:
Yes
Permitted: Yes
Wet Space: No
Addition: No
Conversion: No

133 Pine Cone Drive, Bayfield, Colorado 81122, United States

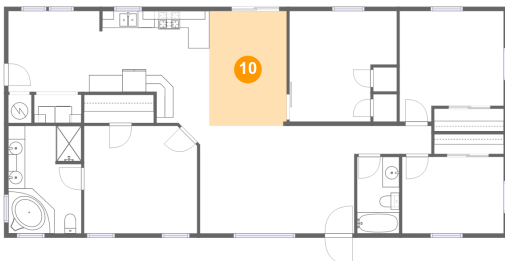
9 Floor 1 - Bedroom



Dimensions: 12'9" x 13'1"
Area: 145 sq. ft
Counted as Living Area:
Yes

Heated: Yes
Finished: Yes
Enclosed: Yes
Contiguous:
Yes
Permitted: Yes
Wet Space: No
Addition: No
Conversion: No

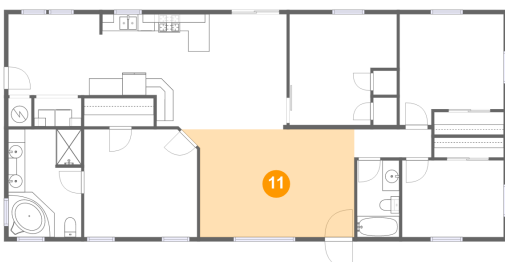
10 Floor 1 - Dining Room



Dimensions: 9'2" x 13'7"
Area: 124 sq. ft
Counted as Living Area:
Yes

Heated: Yes
Finished: Yes
Enclosed: Yes
Contiguous:
Yes
Permitted: Yes
Wet Space: No
Addition: No
Conversion: No

11 Floor 1 - Living Room



Dimensions: 20'4" x 12'9"
Area: 235 sq. ft
Counted as Living Area:
Yes

Heated: Yes
Finished: Yes
Enclosed: Yes
Contiguous:
Yes
Permitted: Yes
Wet Space: No
Addition: No
Conversion: No