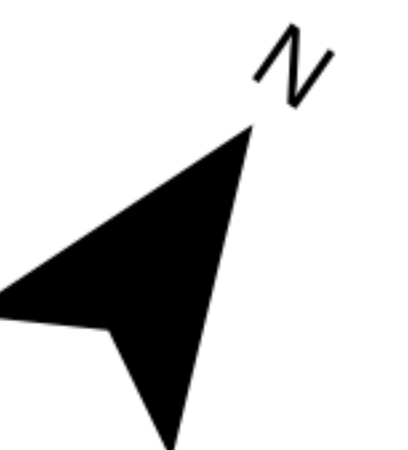
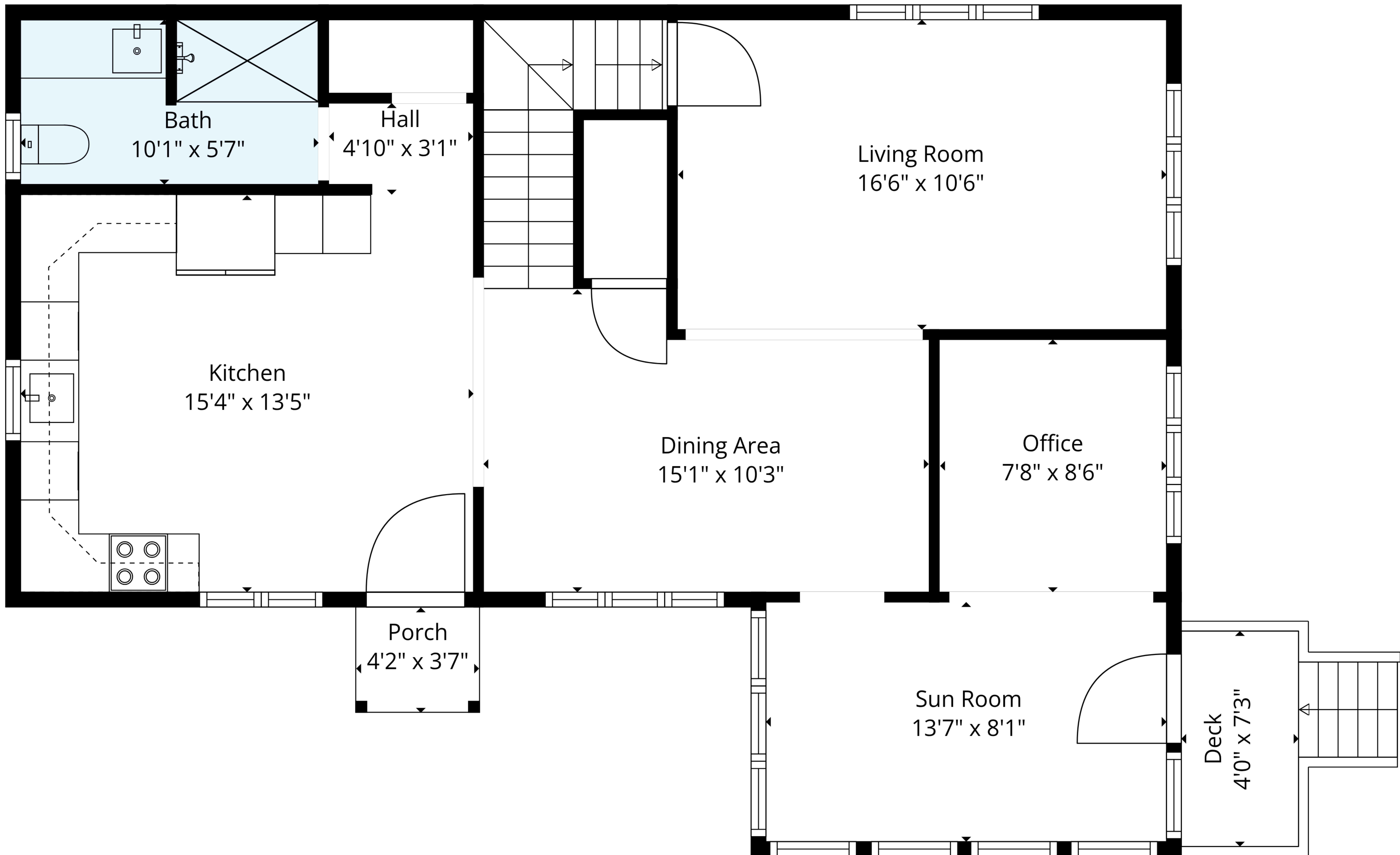


Basement
38'8" x 19'4"

Entry
5'11" x 8'5"

TOTAL: 1444 sq. ft
 Basement 3: 0 sq. ft, Basement 2: 836 sq. ft, Basement 1: 608 sq. ft
 EXCLUDED AREAS: ENTRY: 45 sq. ft, BASEMENT: 749 sq. ft, UNDEFINED: 129 sq. ft,
 PORCH: 15 sq. ft, DECK: 40 sq. ft, ROOM: 41 sq. ft,
 WALLS: 192 sq. ft

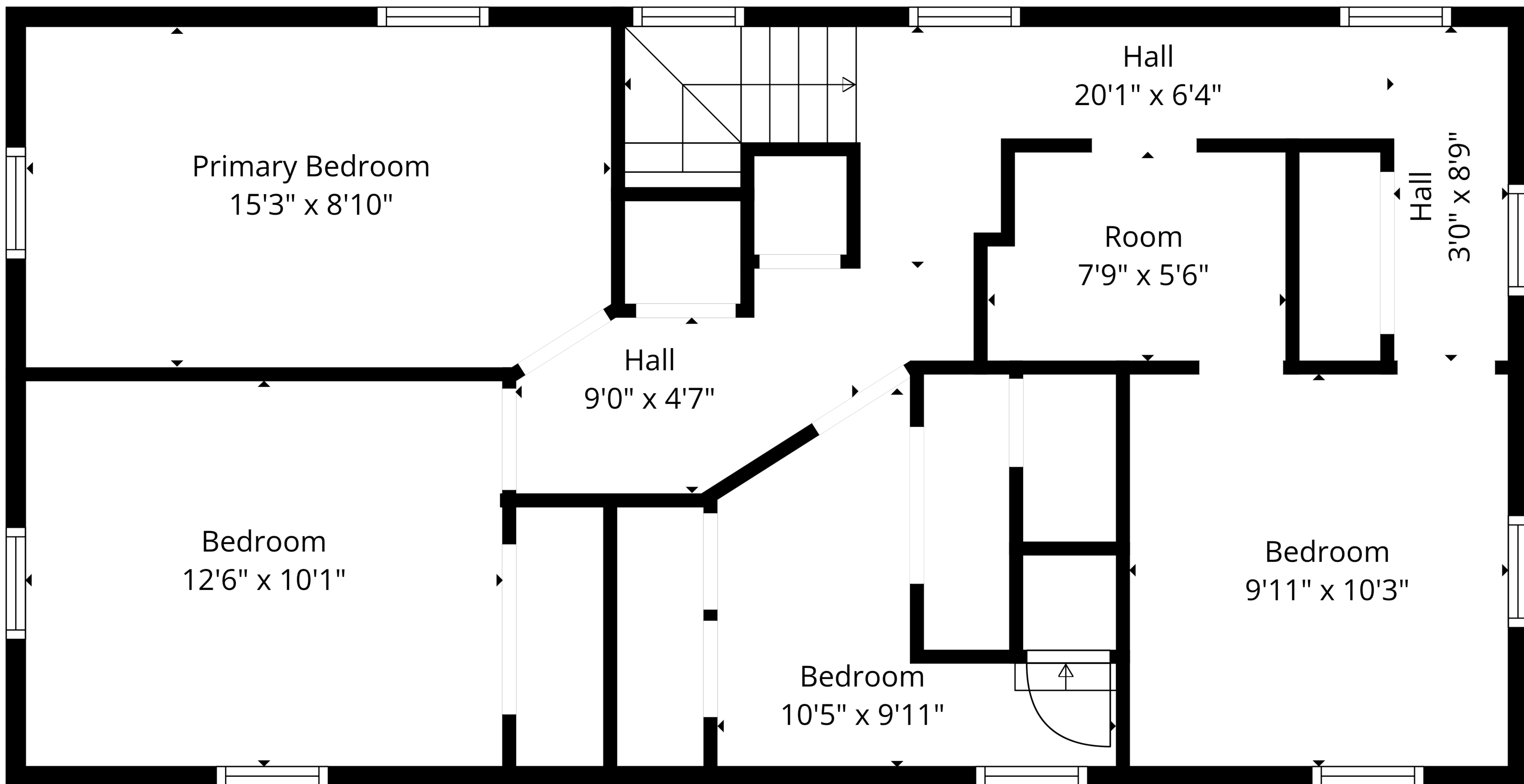




TOTAL: 1444 sq. ft

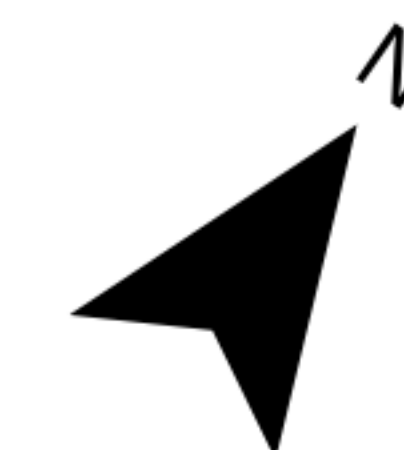
Basement 3: 0 sq. ft, Basement 2: 836 sq. ft, Basement 1: 608 sq. ft
 EXCLUDED AREAS: ENTRY: 45 sq. ft, BASEMENT: 749 sq. ft, UNDEFINED: 129 sq. ft,
 PORCH: 15 sq. ft, DECK: 40 sq. ft, ROOM: 41 sq. ft,
 WALLS: 192 sq. ft

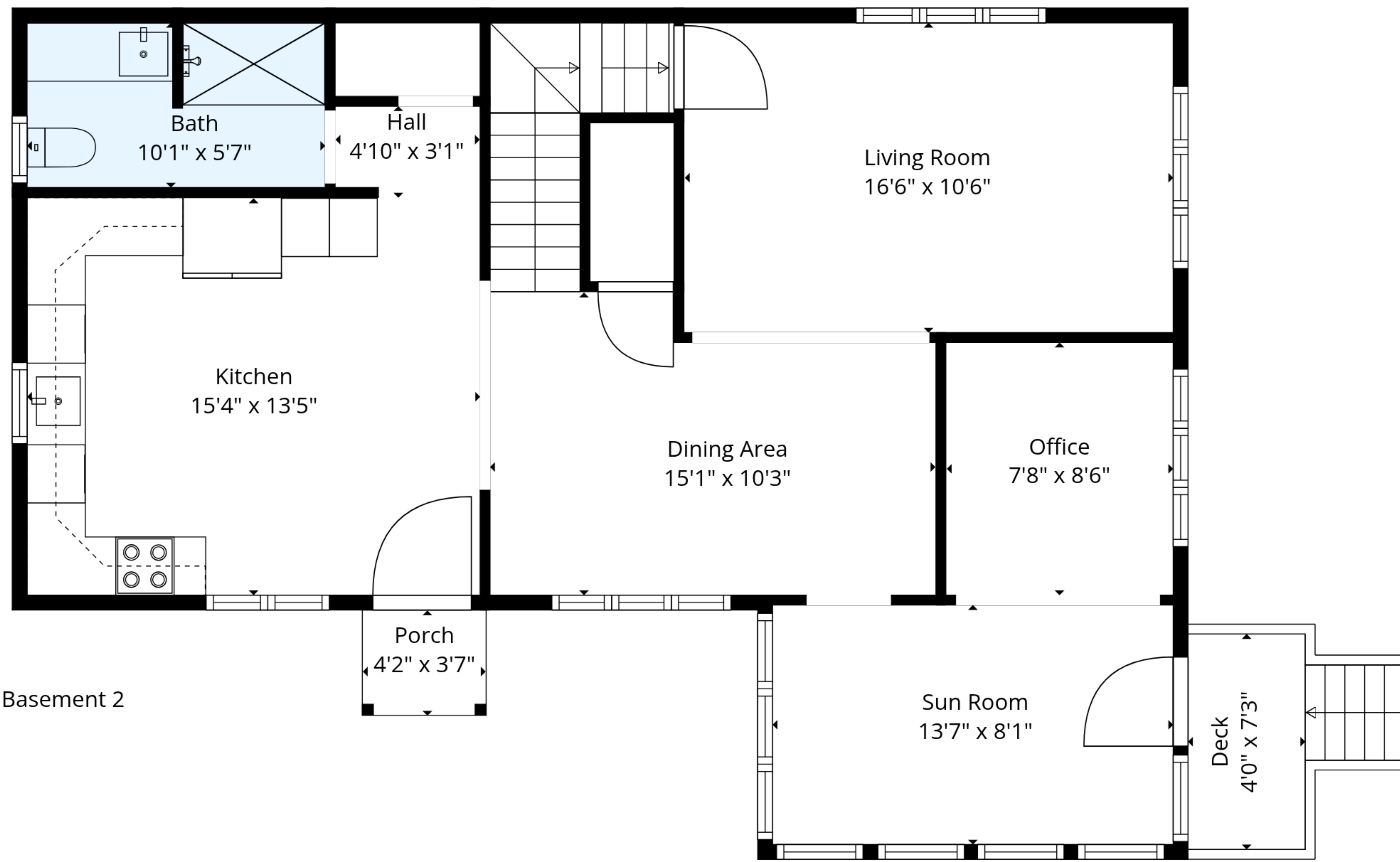




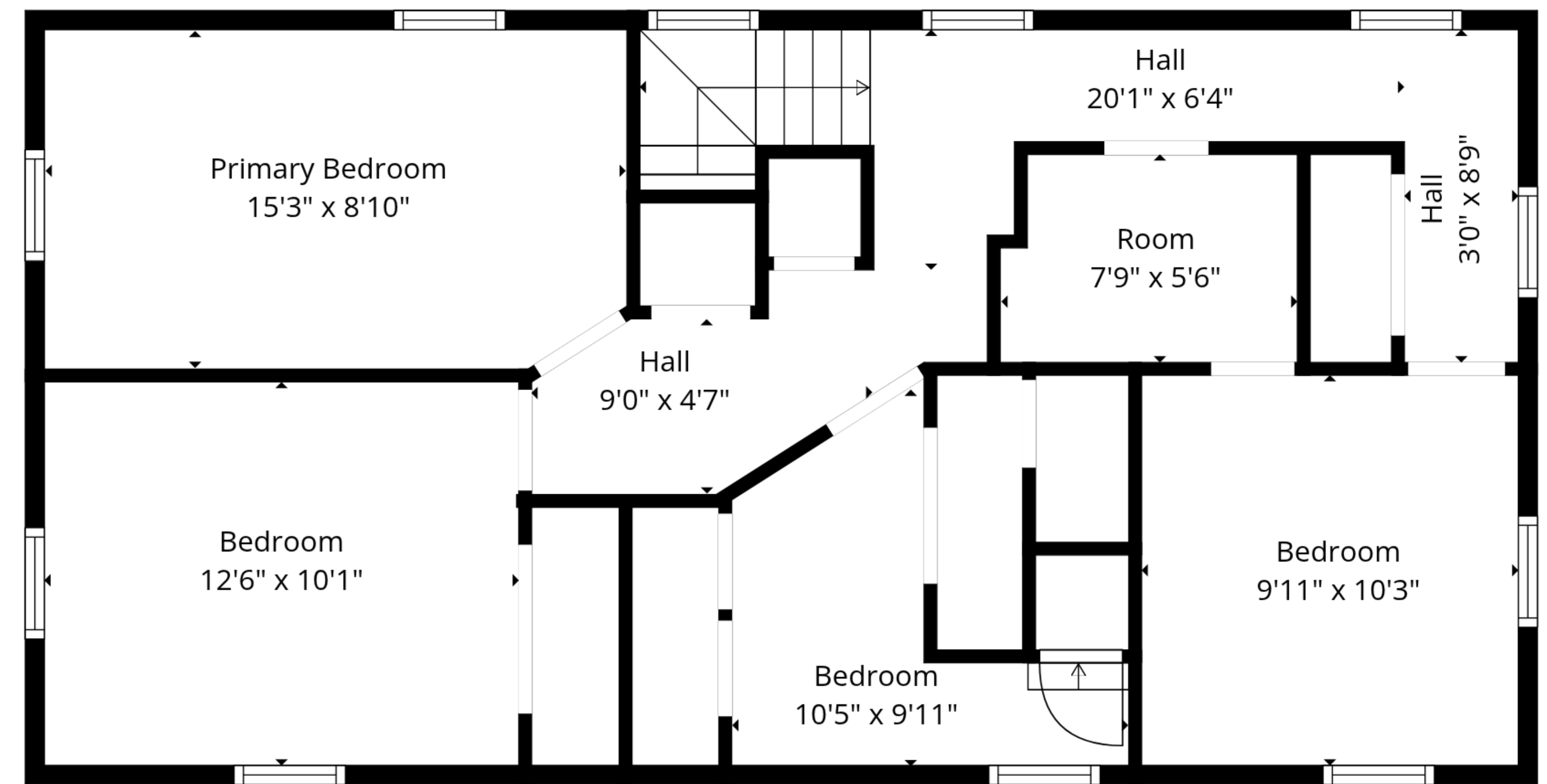
TOTAL: 1444 sq. ft

Basement 3: 0 sq. ft, Basement 2: 836 sq. ft, Basement 1: 608 sq. ft
 EXCLUDED AREAS: ENTRY: 45 sq. ft, BASEMENT: 749 sq. ft, UNDEFINED: 129 sq. ft,
 PORCH: 15 sq. ft, DECK: 40 sq. ft, ROOM: 41 sq. ft,
 WALLS: 192 sq. ft

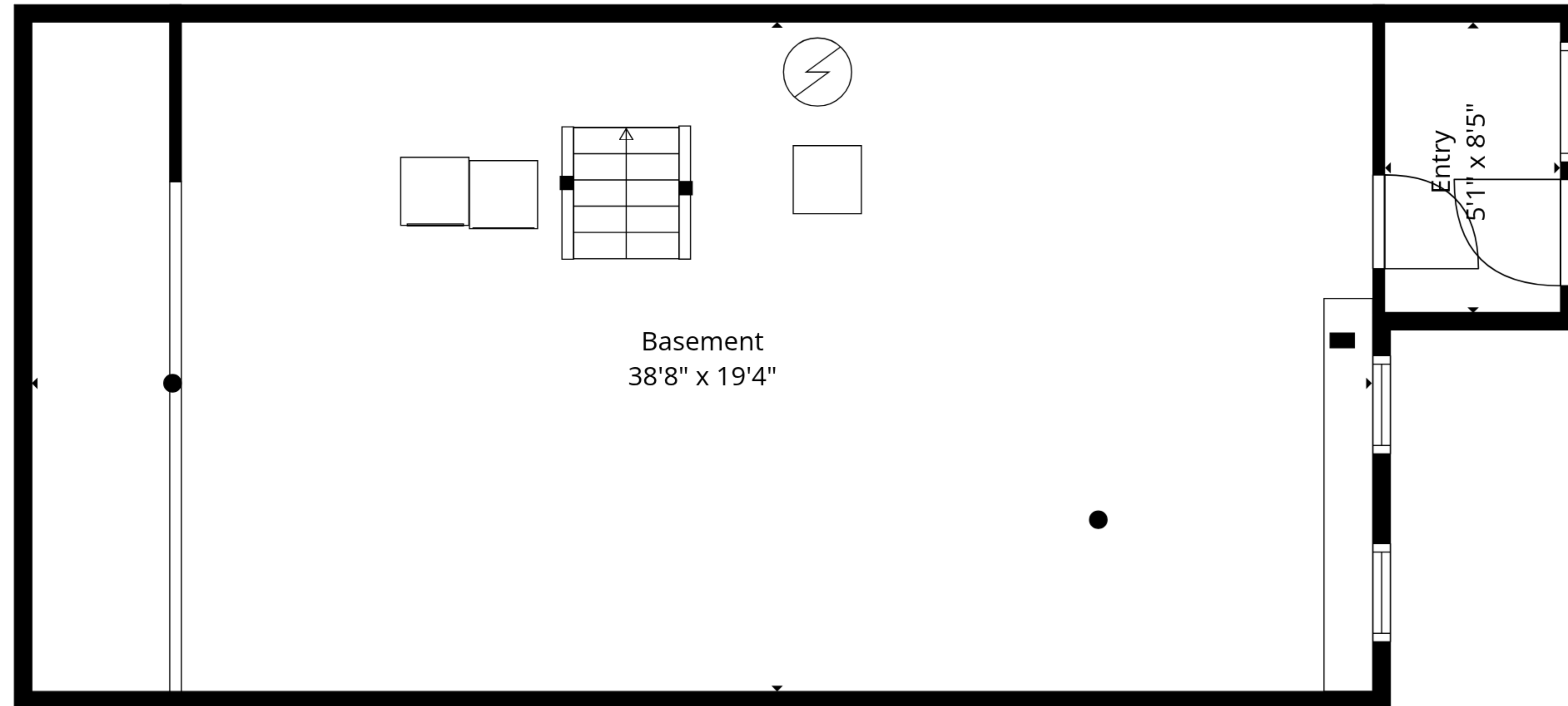




Basement 2



Basement 1



Basement 3

TOTAL: 1444 sq. ft

Basement 3: 0 sq. ft, Basement 2: 836 sq. ft, Basement 1: 608 sq. ft

EXCLUDED AREAS: ENTRY: 45 sq. ft, BASEMENT: 749 sq. ft, UNDEFINED: 129 sq. ft,

PORCH: 15 sq. ft, DECK: 40 sq. ft, ROOM: 41 sq. ft,

WALLS: 192 sq. ft

