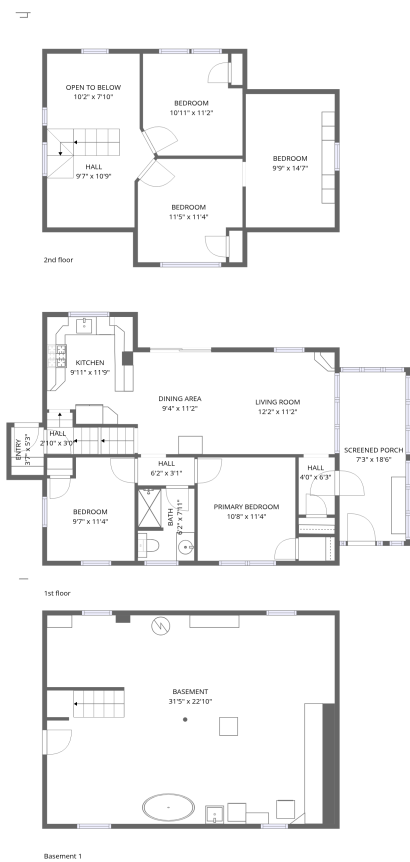


Home data report

1 Beacon St, Newburyport, MA, US



Total Area: 1227 sq. ft

Below Ground: 0 sq. ft, 1st Floor: 836 sq. ft, 2nd Floor: 391 sq. ft

Excluded: Basement 771 sq. ft, Screened porch 151 sq. ft, Open to below 89 sq. ft, Low ceiling 170 sq. ft

Property summary

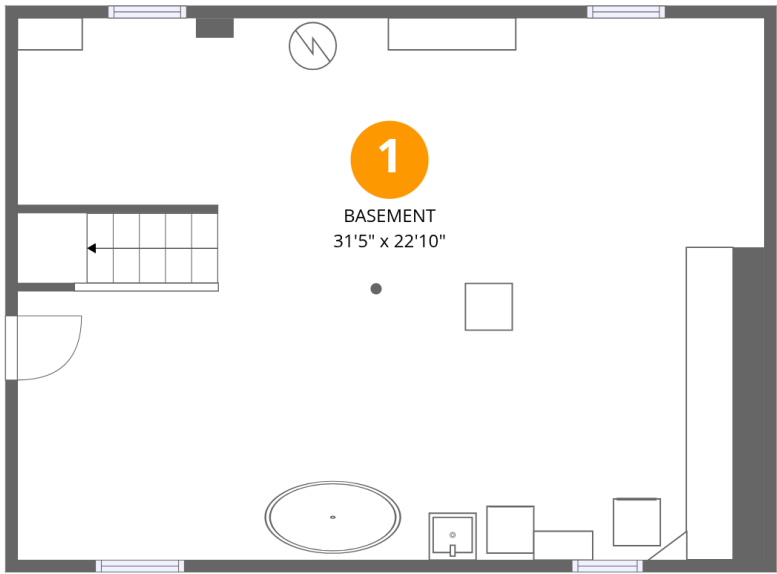
 **3** Floors

 **5** Bedrooms

 **1** Bathrooms

Home data report

1 Beacon St,Newburyport,MA,US



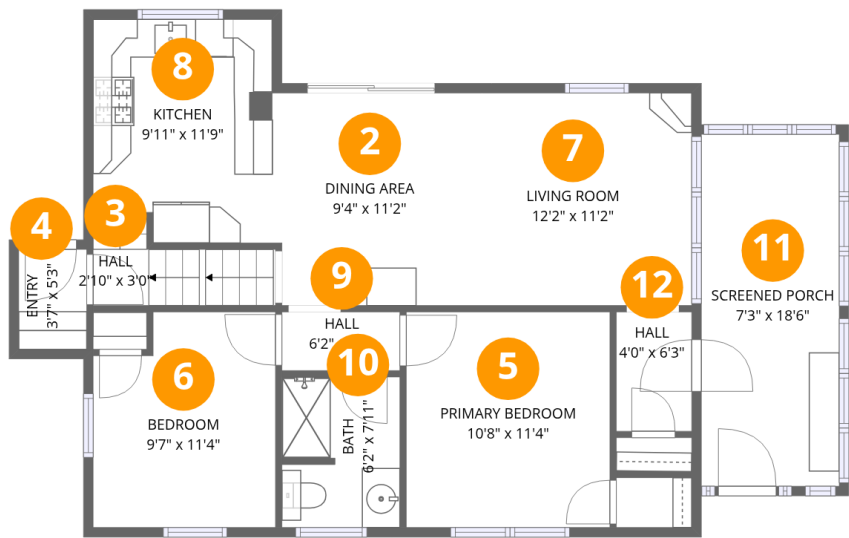
Room dimensions

Floor 1 Below grade Total:0sqft Excluded: 771sqft

#		Dimensions	sqft	Counted as living area
1	Basement	31'5" x 22'10"	713 sq. ft	No

Home data report

1 Beacon St,Newburyport,MA,US



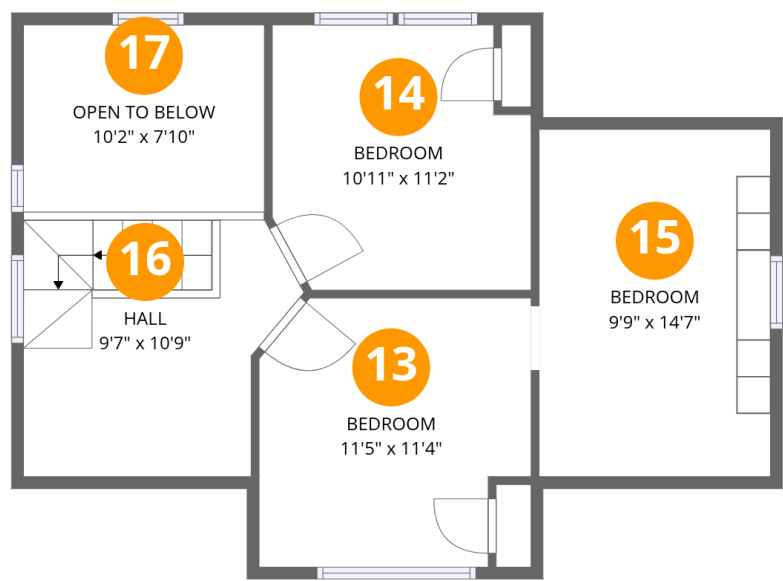
Room dimensions

Floor 2 Total:836sqft Excluded: 151sqft

#		Dimensions	sqft	Counted as living area
2	Dining Area	9'4" x 11'2"	104 sq. ft	Yes
3	Hall	2'10" x 3'0"	33 sq. ft	Yes
4	Entry	3'7" x 5'3"	19 sq. ft	Yes
5	Primary Bedroom	10'8" x 11'4"	121 sq. ft	Yes
6	Bedroom	9'7" x 11'4"	101 sq. ft	Yes
7	Living Room	12'2" x 11'2"	136 sq. ft	Yes
8	Kitchen	9'11" x 11'9"	109 sq. ft	Yes
9	Hall	6'2" x 3'1"	19 sq. ft	Yes
10	Bath	6'2" x 7'11"	48 sq. ft	Yes
11	Screened Porch	7'3" x 18'6"	134 sq. ft	No
12	Hall	4'0" x 6'3"	25 sq. ft	Yes

Home data report

1 Beacon St,Newburyport,MA,US

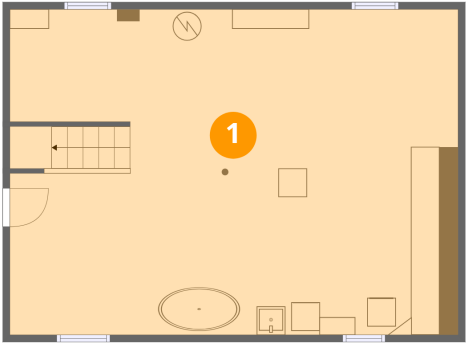


Room dimensions

Floor 3 Total:391sqft Excluded: 259sqft

#		Dimensions	sqft	Counted as living area
13	Bedroom	11'5" x 11'4"	120 sq. ft	Yes
14	Bedroom	10'11" x 11'2"	113 sq. ft	Yes
15	Bedroom	9'9" x 14'7"	108 sq. ft	Yes
16	Hall	9'7" x 10'9"	97 sq. ft	No
17	Open To Below	10'2" x 7'10"	80 sq. ft	No

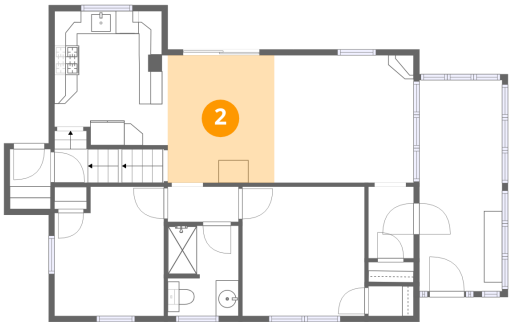
1 Floor 1 - Basement



Dimensions: 31'5" x 22'10"
Area: 713 sq. ft
Counted as living area: No

Heated: Yes
Finished: No
Enclosed: Yes
Contiguous: Yes
Permitted: Yes
Wet space: No
Addition: No
Conversion: No

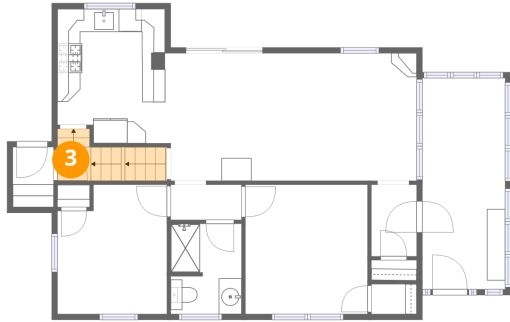
2 Floor 2 - Dining Area



Dimensions: 9'4" x 11'2"
Area: 104 sq. ft
Counted as living area: Yes

Heated: Yes
Finished: Yes
Enclosed: Yes
Contiguous: Yes
Permitted: Yes
Wet space: No
Addition: No
Conversion: No

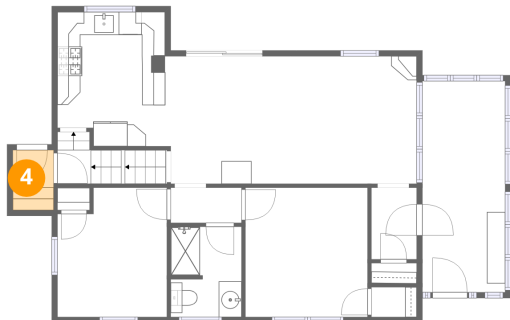
3 Floor 2 - Hall



Dimensions: 2'10" x 3'0"
Area: 33 sq. ft
Counted as living area: Yes

Heated: Yes
Finished: Yes
Enclosed: Yes
Contiguous: Yes
Permitted: Yes
Wet space: No
Addition: No
Conversion: No

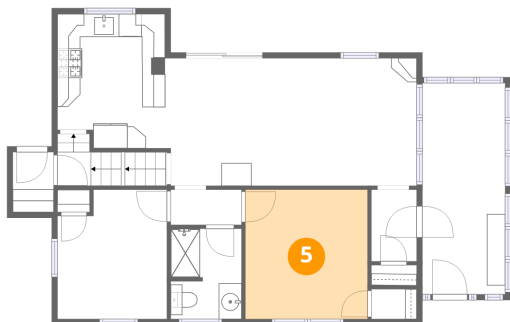
4 Floor 2 - Entry



Dimensions: 3'7" x 5'3"
Area: 19 sq. ft
Counted as living area: Yes

Heated: Yes
Finished: Yes
Enclosed: Yes
Contiguous: Yes
Permitted: Yes
Wet space: No
Addition: No
Conversion: No

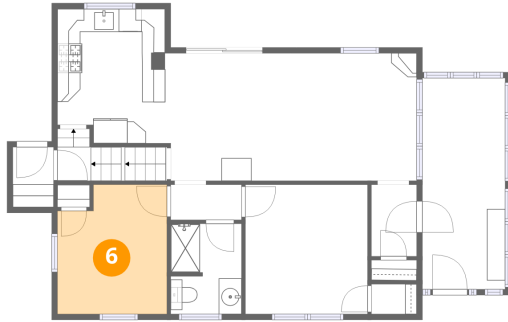
5 Floor 2 - Primary Bedroom



Dimensions: 10'8" x 11'4"
Area: 121 sq. ft
Counted as living area: Yes

Heated: Yes
Finished: Yes
Enclosed: Yes
Contiguous: Yes
Permitted: Yes
Wet space: No
Addition: No
Conversion: No

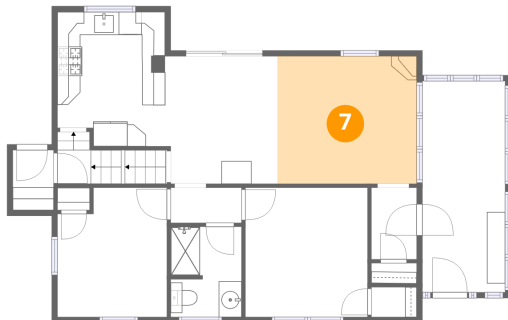
6 Floor 2 - Bedroom



Dimensions: 9'7" x 11'4"
Area: 101 sq. ft
Counted as living area: Yes

Heated: Yes
Finished: Yes
Enclosed: Yes
Contiguous: Yes
Permitted: Yes
Wet space: No
Addition: No
Conversion: No

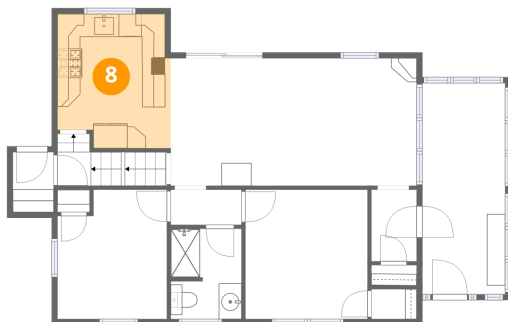
7 Floor 2 - Living Room



Dimensions: 12'2" x 11'2"
Area: 136 sq. ft
Counted as living area: Yes

Heated: Yes
Finished: Yes
Enclosed: Yes
Contiguous: Yes
Permitted: Yes
Wet space: No
Addition: No
Conversion: No

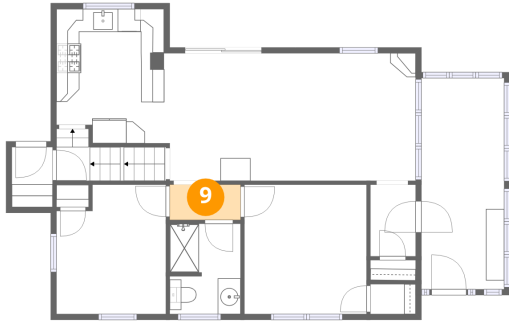
8 Floor 2 - Kitchen



Dimensions: 9'11" x 11'9"
Area: 109 sq. ft
Counted as living area: Yes

Heated: Yes
Finished: Yes
Enclosed: Yes
Contiguous: Yes
Permitted: Yes
Wet space: No
Addition: No
Conversion: No

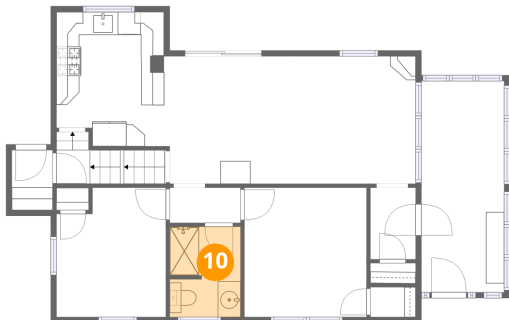
9 Floor 2 - Hall



Dimensions: 6'2" x 3'1"
Area: 19 sq. ft
Counted as living area: Yes

Heated: Yes
Finished: Yes
Enclosed: Yes
Contiguous: Yes
Permitted: Yes
Wet space: No
Addition: No
Conversion: No

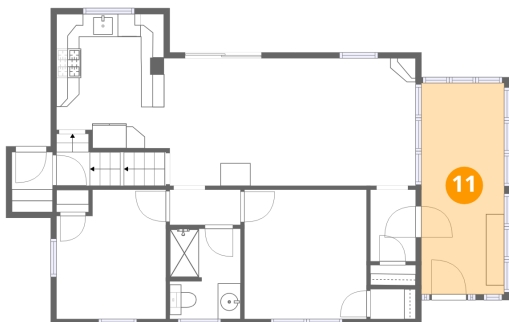
10 Floor 2 - Bath



Dimensions: 6'2" x 7'11"
Area: 48 sq. ft
Counted as living area: Yes

Heated: Yes
Finished: Yes
Enclosed: Yes
Contiguous: Yes
Permitted: Yes
Wet space: Yes
Addition: No
Conversion: No

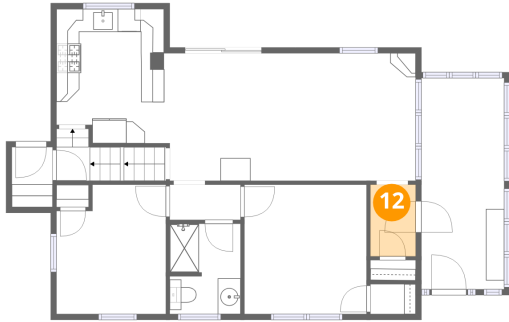
11 Floor 2 - Screened Porch



Dimensions: 7'3" x 18'6"
Area: 134 sq. ft
Counted as living area: No

Heated: No
Finished: No
Enclosed: No
Contiguous: Yes
Permitted: Yes
Wet space: No
Addition: No
Conversion: No

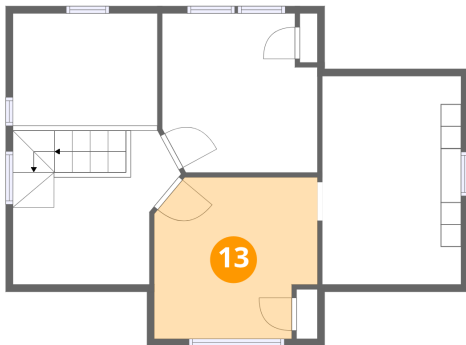
12 Floor 2 - Hall



Dimensions: 4'0" x 6'3"
Area: 25 sq. ft
Counted as living area: Yes

Heated: Yes
Finished: Yes
Enclosed: Yes
Contiguous: Yes
Permitted: Yes
Wet space: No
Addition: No
Conversion: No

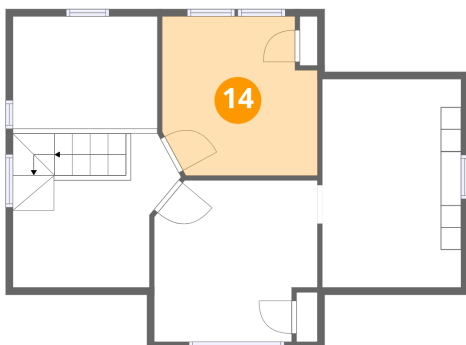
13 Floor 3 - Bedroom



Dimensions: 11'5" x 11'4"
Area: 120 sq. ft
Counted as living area: Yes

Heated: Yes
Finished: Yes
Enclosed: Yes
Contiguous: Yes
Permitted: Yes
Wet space: No
Addition: No
Conversion: No

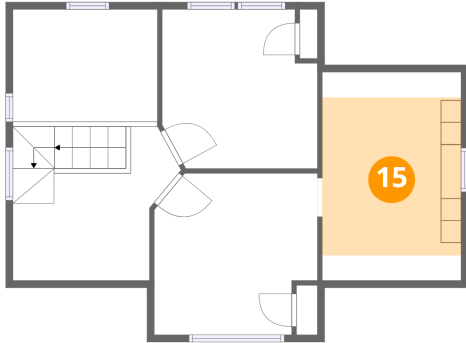
14 Floor 3 - Bedroom



Dimensions: 10'11" x 11'2"
Area: 113 sq. ft
Counted as living area: Yes

Heated: Yes
Finished: Yes
Enclosed: Yes
Contiguous: Yes
Permitted: Yes
Wet space: No
Addition: No
Conversion: No

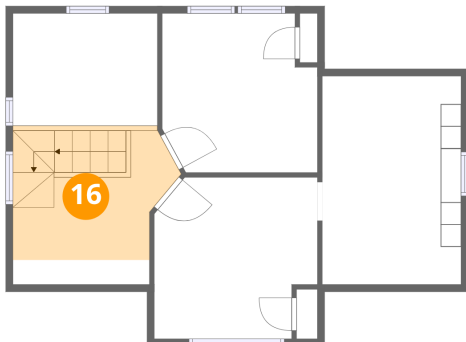
15 Floor 3 - Bedroom



Dimensions: 9'9" x 14'7"
Area: 108 sq. ft
Counted as living area: Yes

Heated: Yes
Finished: Yes
Enclosed: Yes
Contiguous: Yes
Permitted: Yes
Wet space: No
Addition: No
Conversion: No

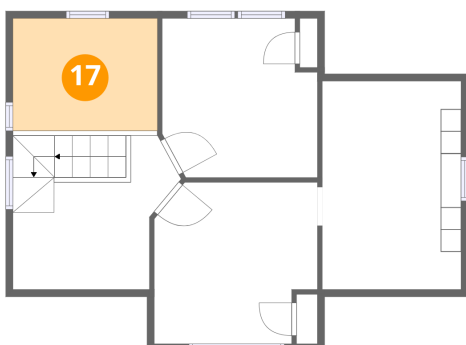
16 Floor 3 - Hall



Dimensions: 9'7" x 10'9"
Area: 97 sq. ft
Counted as living area: No

Heated: Yes
Finished: Yes
Enclosed: Yes
Contiguous: Yes
Permitted: Yes
Wet space: No
Addition: No
Conversion: No

17 Floor 3 - Open To Below



Dimensions: 10'2" x 7'10"
Area: 80 sq. ft
Counted as living area: No

Heated: No
Finished: No
Enclosed: No
Contiguous: Yes
Permitted: No
Wet space: No
Addition: No
Conversion: No