

Home report

256 Archer Circle, Shandon, San Luis Obispo County, California,
United States, 93461



FLOOR 1

Total GLA: 2037 sq. ft
Floor 1: 2037 sq. ft
Excluded: Garage 536 sq. ft

Property summary

 **1** Floors

 **4** Bedrooms

 **2** Bathrooms

Home report

**256 Archer Circle, Shandon, San Luis Obispo County, California,
United States, 93461**



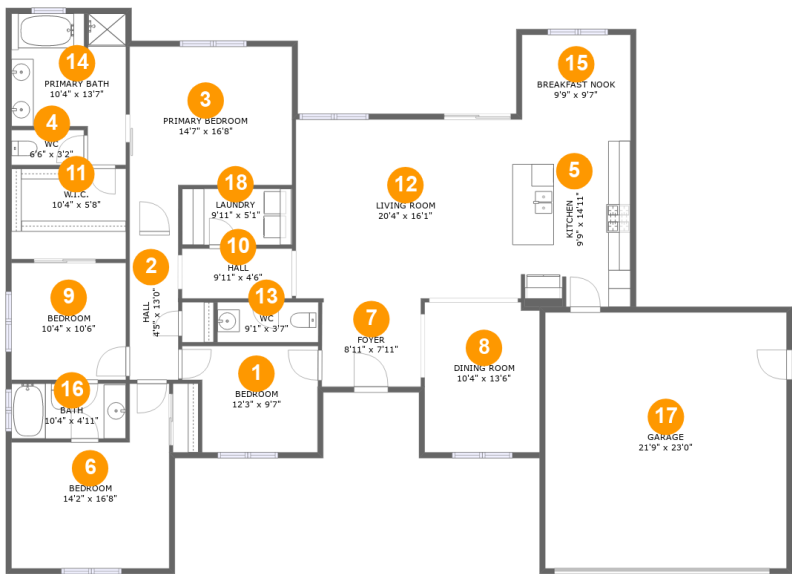
1
Half baths



1
Garages

Home report

256 Archer Circle, Shandon, San Luis Obispo County, California,
United States, 93461



Room dimensions

Floor 1 Total:2037sqft Excluded: 536sqft

#		Max Dimensions	sqft	Included
1	Bedroom	12'3" x 9'7"	105 sq. ft	Yes
2	Hall	4'5" x 13'0"	57 sq. ft	Yes
3	Primary Bedroom	14'7" x 16'8"	200 sq. ft	Yes
4	WC	6'6" x 3'2"	21 sq. ft	Yes
5	Kitchen	9'9" x 14'11"	144 sq. ft	Yes
6	Bedroom	14'2" x 16'8"	180 sq. ft	Yes
7	Foyer	8'11" x 7'11"	71 sq. ft	Yes
8	Dining Room	10'4" x 13'6"	139 sq. ft	Yes
9	Bedroom	10'4" x 10'6"	108 sq. ft	Yes
10	Hall	9'11" x 4'6"	45 sq. ft	Yes
11	W.I.C.	10'4" x 5'8"	58 sq. ft	Yes

Home report

**256 Archer Circle, Shandon, San Luis Obispo County, California,
United States, 93461**

#		Max Dimensions	sqft	Included
12	Living Room	20'4" x 16'1"	330 sq. ft	Yes
13	WC	9'1" x 3'7"	33 sq. ft	Yes
14	Primary Bath	10'4" x 13'7"	115 sq. ft	Yes
15	Breakfast Nook	9'9" x 9'7"	93 sq. ft	Yes
16	Bath	10'4" x 4'11"	51 sq. ft	Yes
17	Garage	21'9" x 23'0"	500 sq. ft	No
18	Laundry	9'11" x 5'1"	50 sq. ft	Yes

256 Archer Circle, Shandon, San Luis Obispo County, California,
United States, 93461

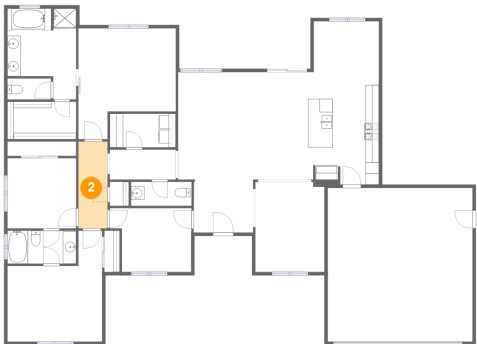
1 Floor 1 - Bedroom



Max Dimensions: 12'3" x 9'7"
Calculated Area: 105 sq. ft
Included: Yes

Heated: Yes
Finished: Yes
Enclosed: Yes
Contiguous: Yes
Permitted: Yes
Wet space: No
Addition: No
Conversion: No

2 Floor 1 - Hall



Max Dimensions: 4'5" x 13'0"
Calculated Area: 57 sq. ft
Included: Yes

Heated: Yes
Finished: Yes
Enclosed: Yes
Contiguous: Yes
Permitted: Yes
Wet space: No
Addition: No
Conversion: No

256 Archer Circle, Shandon, San Luis Obispo County, California,
United States, 93461

3 Floor 1 - Primary Bedroom



Max Dimensions: 14'7" x 16'8"
Calculated Area: 200 sq. ft
Included: Yes

Heated: Yes
Finished: Yes
Enclosed: Yes
Contiguous: Yes
Permitted: Yes
Wet space: No
Addition: No
Conversion: No

4 Floor 1 - WC



Max Dimensions: 6'6" x 3'2"
Calculated Area: 21 sq. ft
Included: Yes

Heated: Yes
Finished: Yes
Enclosed: Yes
Contiguous: Yes
Permitted: Yes
Wet space: Yes
Addition: No
Conversion: No

5 Floor 1 - Kitchen



Max Dimensions: 9'9" x 14'11"
Calculated Area: 144 sq. ft
Included: Yes

Heated: Yes
Finished: Yes
Enclosed: Yes
Contiguous: Yes
Permitted: Yes
Wet space: No
Addition: No
Conversion: No

256 Archer Circle, Shandon, San Luis Obispo County, California,
United States, 93461

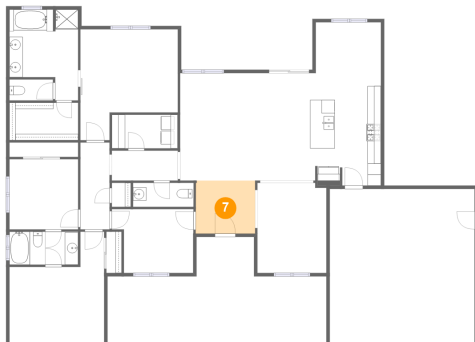
6 Floor 1 - Bedroom



Max Dimensions: 14'2" x 16'8"
Calculated Area: 180 sq. ft
Included: Yes

Heated: Yes
Finished: Yes
Enclosed: Yes
Contiguous: Yes
Permitted: Yes
Wet space: No
Addition: No
Conversion: No

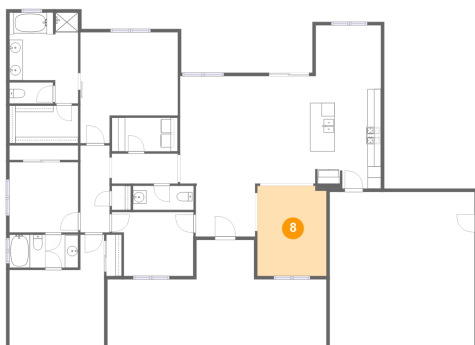
7 Floor 1 - Foyer



Max Dimensions: 8'11" x 7'11"
Calculated Area: 71 sq. ft
Included: Yes

Heated: Yes
Finished: Yes
Enclosed: Yes
Contiguous: Yes
Permitted: Yes
Wet space: No
Addition: No
Conversion: No

8 Floor 1 - Dining Room



Max Dimensions: 10'4" x 13'6"
Calculated Area: 139 sq. ft
Included: Yes

Heated: Yes
Finished: Yes
Enclosed: Yes
Contiguous: Yes
Permitted: Yes
Wet space: No
Addition: No
Conversion: No

Home report

256 Archer Circle, Shandon, San Luis Obispo County, California,
United States, 93461

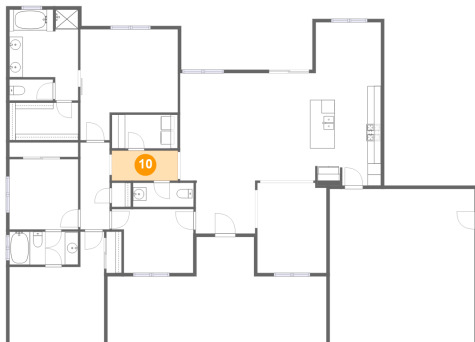
9 Floor 1 - Bedroom



Max Dimensions: 10'4" x 10'6"
Calculated Area: 108 sq. ft
Included: Yes

Heated: Yes
Finished: Yes
Enclosed: Yes
Contiguous: Yes
Permitted: Yes
Wet space: No
Addition: No
Conversion: No

10 Floor 1 - Hall



Max Dimensions: 9'11" x 4'6"
Calculated Area: 45 sq. ft
Included: Yes

Heated: Yes
Finished: Yes
Enclosed: Yes
Contiguous: Yes
Permitted: Yes
Wet space: No
Addition: No
Conversion: No

11 Floor 1 - W.I.C.



Max Dimensions: 10'4" x 5'8"
Calculated Area: 58 sq. ft
Included: Yes

Heated: Yes
Finished: Yes
Enclosed: Yes
Contiguous: Yes
Permitted: Yes
Wet space: No
Addition: No
Conversion: No

256 Archer Circle, Shandon, San Luis Obispo County, California,
United States, 93461

12 Floor 1 - Living Room



Max Dimensions: 20'4" x 16'1"
Calculated Area: 330 sq. ft
Included: Yes

Heated: Yes
Finished: Yes
Enclosed: Yes
Contiguous: Yes
Permitted: Yes
Wet space: No
Addition: No
Conversion: No

13 Floor 1 - WC



Max Dimensions: 9'1" x 3'7"
Calculated Area: 33 sq. ft
Included: Yes

Heated: Yes
Finished: Yes
Enclosed: Yes
Contiguous: Yes
Permitted: Yes
Wet space: Yes
Addition: No
Conversion: No

14 Floor 1 - Primary Bath



Max Dimensions: 10'4" x 13'7"
Calculated Area: 115 sq. ft
Included: Yes

Heated: Yes
Finished: Yes
Enclosed: Yes
Contiguous: Yes
Permitted: Yes
Wet space: Yes
Addition: No
Conversion: No

256 Archer Circle, Shandon, San Luis Obispo County, California,
United States, 93461

15 Floor 1 - Breakfast Nook



Max Dimensions: 9'9" x 9'7"
Calculated Area: 93 sq. ft
Included: Yes

Heated: Yes
Finished: Yes
Enclosed: Yes
Contiguous: Yes
Permitted: Yes
Wet space: No
Addition: No
Conversion: No

16 Floor 1 - Bath



Max Dimensions: 10'4" x 4'11"
Calculated Area: 51 sq. ft
Included: Yes

Heated: Yes
Finished: Yes
Enclosed: Yes
Contiguous: Yes
Permitted: Yes
Wet space: Yes
Addition: No
Conversion: No

17 Floor 1 - Garage



Max Dimensions: 21'9" x 23'0"
Calculated Area: 500 sq. ft
Included: No

Heated: No
Finished: No
Enclosed: Yes
Contiguous: Yes
Permitted: Yes
Wet space: No
Addition: No
Conversion: No

256 Archer Circle, Shandon, San Luis Obispo County, California,
United States, 93461

18 Floor 1 - Laundry



Max Dimensions: 9'11" x 5'1"
Calculated Area: 50 sq. ft
Included: Yes

Heated: Yes
Finished: Yes
Enclosed: Yes
Contiguous: Yes
Permitted: Yes
Wet space: No
Addition: No
Conversion: No