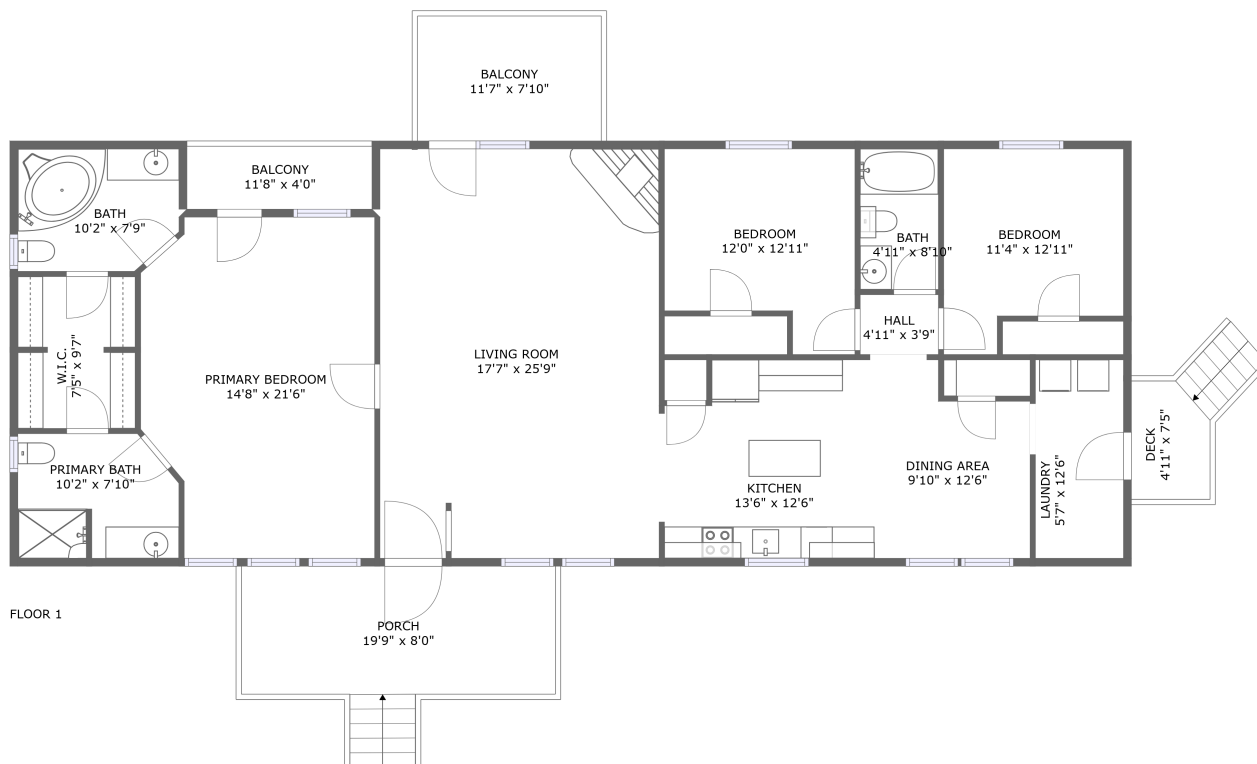


240 Lovell Lane, Martinsville, Franklin County, Virginia, United States, 24112



Property summary

 **0** Garages

 **3** Bedrooms

 **3** Bathrooms

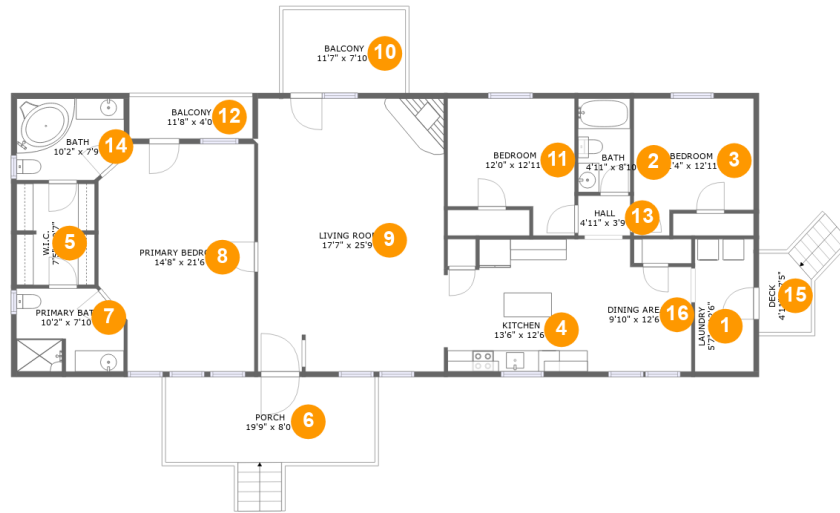
 **0** Half baths

 **1** Floors

 **1,841** Gross living area sqft

 **2,207** Total sqft

240 Lovell Lane, Martinsville, Franklin County, Virginia, United States, 24112



Room dimensions

Floor 1

Total sqft: 2207 Living area: 1841

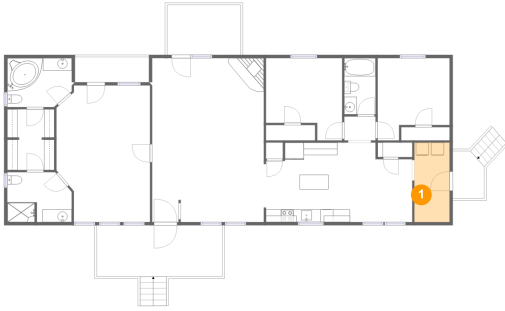
#		Dimensions	sqft	Counted as living area
1	Utility	5'7" x 12'6"	69 sq. ft	Yes
2	Bath	4'11" x 8'10"	44 sq. ft	Yes
3	Bedroom	11'4" x 12'11"	127 sq. ft	Yes
4	Kitchen	13'6" x 12'6"	159 sq. ft	Yes
5	Cl	7'5" x 9'7"	69 sq. ft	Yes
6	Outdoor	19'9" x 8'0"	178 sq. ft	No
7	Bath	10'2" x 7'10"	75 sq. ft	Yes
8	Bedroom	14'8" x 21'6"	292 sq. ft	Yes
9	Living Room	17'7" x 25'9"	453 sq. ft	Yes
10	Outdoor	11'7" x 7'10"	91 sq. ft	No
11	Bedroom	12'0" x 12'11"	133 sq. ft	Yes

**240 Lovell Lane, Martinsville, Franklin County,
Virginia, United States, 24112**

#		Dimensions	sqft	Counted as living area
12	Outdoor	11'8" x 4'0"	46 sq. ft	No
13	Hall	4'11" x 3'9"	19 sq. ft	Yes
14	Bath	10'2" x 7'9"	75 sq. ft	Yes
15	Outdoor	4'11" x 7'5"	51 sq. ft	No
16	Dining Room	9'10" x 12'6"	108 sq. ft	Yes

240 Lovell Lane, Martinsville, Franklin County, Virginia, United States, 24112

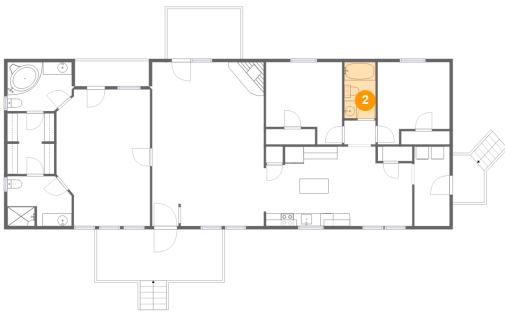
1 Floor 1 - Utility



Dimensions: 5'7" x 12'6"
Area: 69 sq. ft
Counted as living area: Yes

Heated: Yes
Finished: Yes
Enclosed: Yes
Contiguous: Yes
Permitted: Yes
Wet space: No
Addition: No
Conversion: No

2 Floor 1 - Bath



Dimensions: 4'11" x 8'10"
Area: 44 sq. ft
Counted as living area: Yes

Heated: Yes
Finished: Yes
Enclosed: Yes
Contiguous: Yes
Permitted: Yes
Wet space: Yes
Addition: No
Conversion: No

240 Lovell Lane, Martinsville, Franklin County, Virginia, United States, 24112

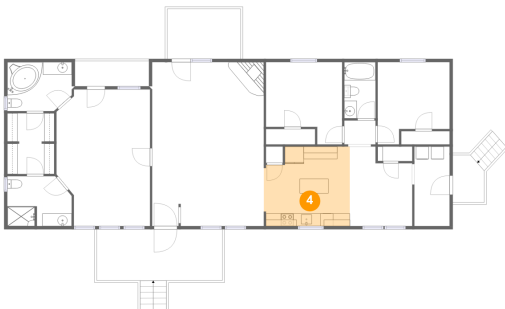
3 Floor 1 - Bedroom



Dimensions: 11'4" x 12'11"
Area: 127 sq. ft
Counted as living area: Yes

Heated: Yes
Finished: Yes
Enclosed: Yes
Contiguous: Yes
Permitted: Yes
Wet space: No
Addition: No
Conversion: No

4 Floor 1 - Kitchen



Dimensions: 13'6" x 12'6"
Area: 159 sq. ft
Counted as living area: Yes

Heated: Yes
Finished: Yes
Enclosed: Yes
Contiguous: Yes
Permitted: Yes
Wet space: No
Addition: No
Conversion: No

5 Floor 1 - Cl

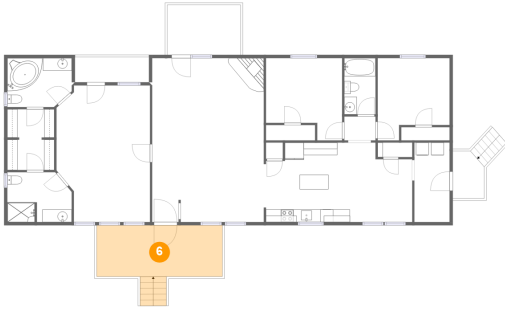


Dimensions: 7'5" x 9'7"
Area: 69 sq. ft
Counted as living area: Yes

Heated: Yes
Finished: Yes
Enclosed: Yes
Contiguous: Yes
Permitted: Yes
Wet space: No
Addition: No
Conversion: No

240 Lovell Lane, Martinsville, Franklin County, Virginia, United States, 24112

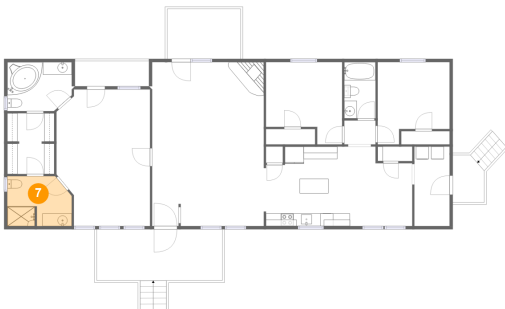
6 Floor 1 - Outdoor



Dimensions: 19'9" x 8'0"
Area: 178 sq. ft
Counted as living area: No

Heated: No
Finished: Yes
Enclosed: No
Contiguous: Yes
Permitted: Yes
Wet space: No
Addition: No
Conversion: No

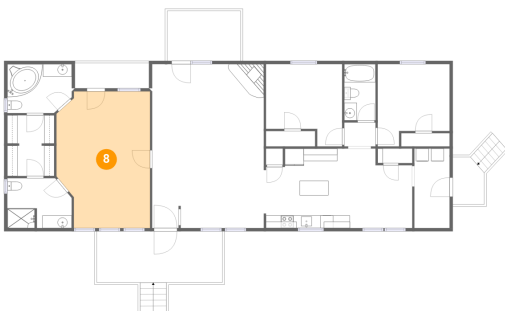
7 Floor 1 - Bath



Dimensions: 10'2" x 7'10"
Area: 75 sq. ft
Counted as living area: Yes

Heated: Yes
Finished: Yes
Enclosed: Yes
Contiguous: Yes
Permitted: Yes
Wet space: Yes
Addition: No
Conversion: No

8 Floor 1 - Bedroom

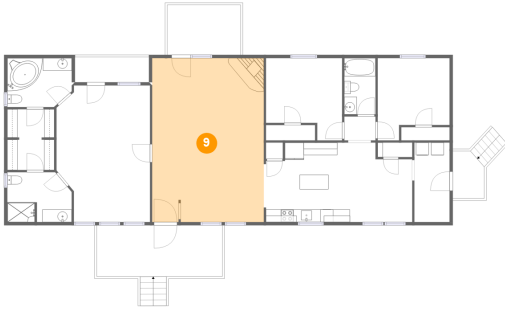


Dimensions: 14'8" x 21'6"
Area: 292 sq. ft
Counted as living area: Yes

Heated: Yes
Finished: Yes
Enclosed: Yes
Contiguous: Yes
Permitted: Yes
Wet space: No
Addition: No
Conversion: No

240 Lovell Lane, Martinsville, Franklin County, Virginia, United States, 24112

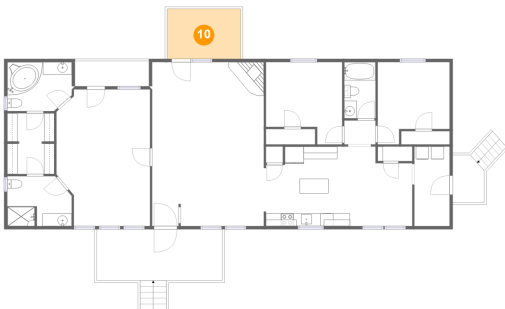
9 Floor 1 - Living Room



Dimensions: 17'7" x 25'9"
Area: 453 sq. ft
Counted as living area: Yes

Heated: Yes
Finished: Yes
Enclosed: Yes
Contiguous: Yes
Permitted: Yes
Wet space: No
Addition: No
Conversion: No

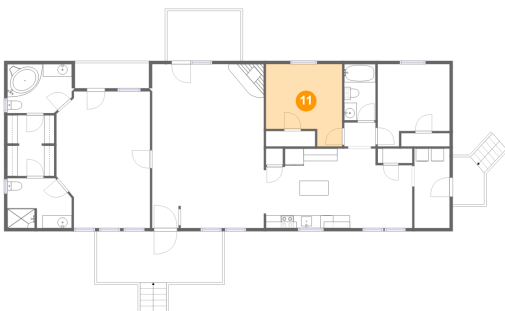
10 Floor 1 - Outdoor



Dimensions: 11'7" x 7'10"
Area: 91 sq. ft
Counted as living area: No

Heated: No
Finished: Yes
Enclosed: No
Contiguous: Yes
Permitted: Yes
Wet space: No
Addition: No
Conversion: No

11 Floor 1 - Bedroom

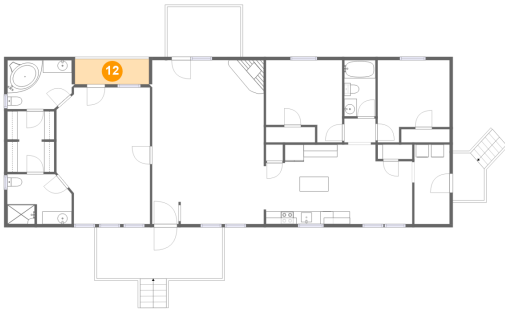


Dimensions: 12'0" x 12'11"
Area: 133 sq. ft
Counted as living area: Yes

Heated: Yes
Finished: Yes
Enclosed: Yes
Contiguous: Yes
Permitted: Yes
Wet space: No
Addition: No
Conversion: No

**240 Lovell Lane, Martinsville, Franklin County,
Virginia, United States, 24112**

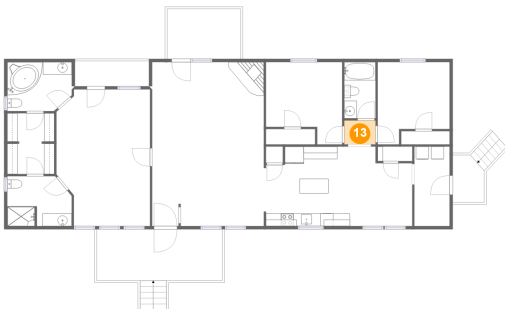
12 Floor 1 - Outdoor



Dimensions: 11'8" x 4'0"
Area: 46 sq. ft
Counted as living area: No

Heated: No
Finished: Yes
Enclosed: No
Contiguous: Yes
Permitted: Yes
Wet space: No
Addition: No
Conversion: No

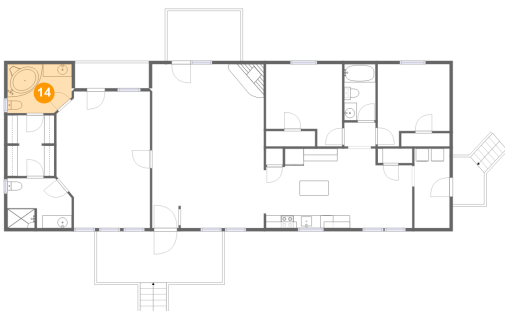
13 Floor 1 - Hall



Dimensions: 4'11" x 3'9"
Area: 19 sq. ft
Counted as living area: Yes

Heated: Yes
Finished: Yes
Enclosed: Yes
Contiguous: Yes
Permitted: Yes
Wet space: No
Addition: No
Conversion: No

14 Floor 1 - Bath

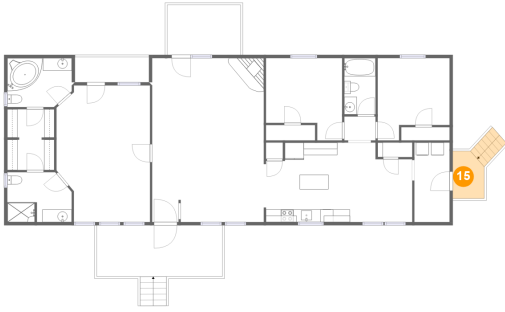


Dimensions: 10'2" x 7'9"
Area: 75 sq. ft
Counted as living area: Yes

Heated: Yes
Finished: Yes
Enclosed: Yes
Contiguous: Yes
Permitted: Yes
Wet space: Yes
Addition: No
Conversion: No

**240 Lovell Lane, Martinsville, Franklin County,
Virginia, United States, 24112**

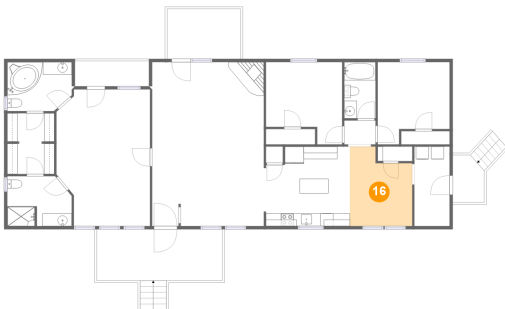
15 Floor 1 - Outdoor



Dimensions: 4'11" x 7'5"
Area: 51 sq. ft
Counted as living area: No

Heated: No
Finished: Yes
Enclosed: No
Contiguous: Yes
Permitted: Yes
Wet space: No
Addition: No
Conversion: No

16 Floor 1 - Dining Room



Dimensions: 9'10" x 12'6"
Area: 108 sq. ft
Counted as living area: Yes

Heated: Yes
Finished: Yes
Enclosed: Yes
Contiguous: Yes
Permitted: Yes
Wet space: No
Addition: No
Conversion: No